

| STATE | REFERENCE PROJECT NO | FISCAL YEAR | SHEET NO | LAST SHEET NO |
|-------|----------------------|-------------|----------|---------------|
| AL | SCP 59-969-25 (EAST) | 2025 | 1 | 5 |

SHELBY COUNTY HIGHWAY DEPARTMENT

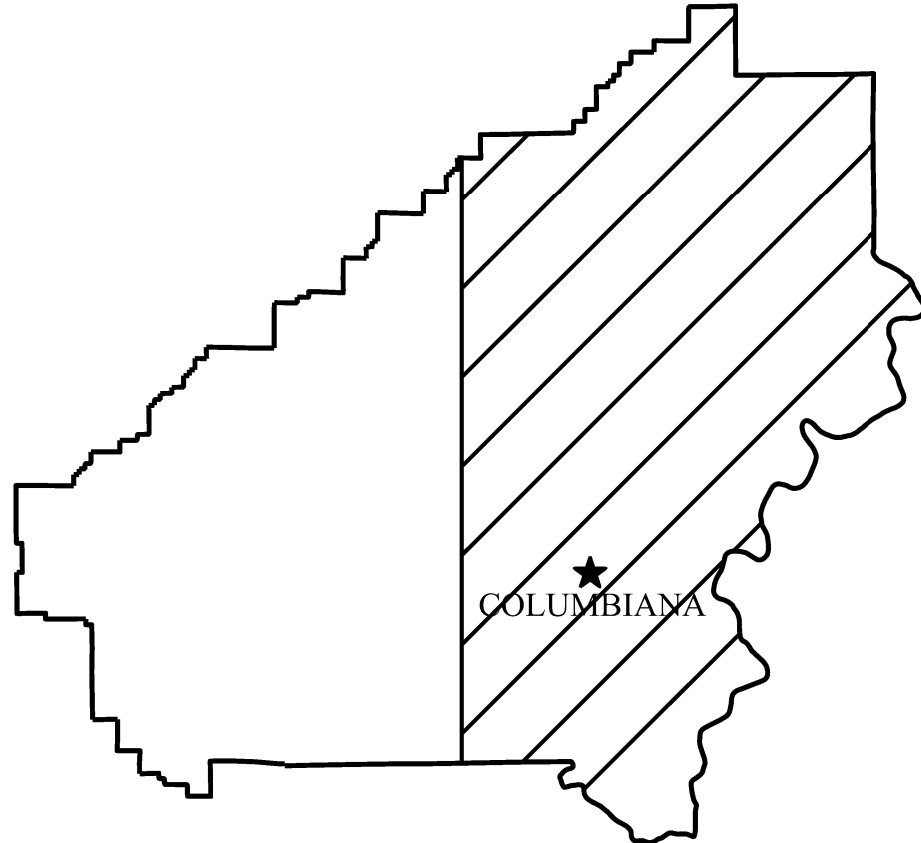
PLANS OF PROPOSED PROJECT SCP 59-969-25 (EAST)

REPAIR, RESURFACING & TRAFFIC STRIPE FOR VARIOUS COUNTY ROADS
IN EAST SHELBY COUNTY, AL



PROJECT LOCATION

STATE LOCATOR



COLUMBIANA



COUNTY ENGINEER
DAVID WILLINGHAM, P.E.

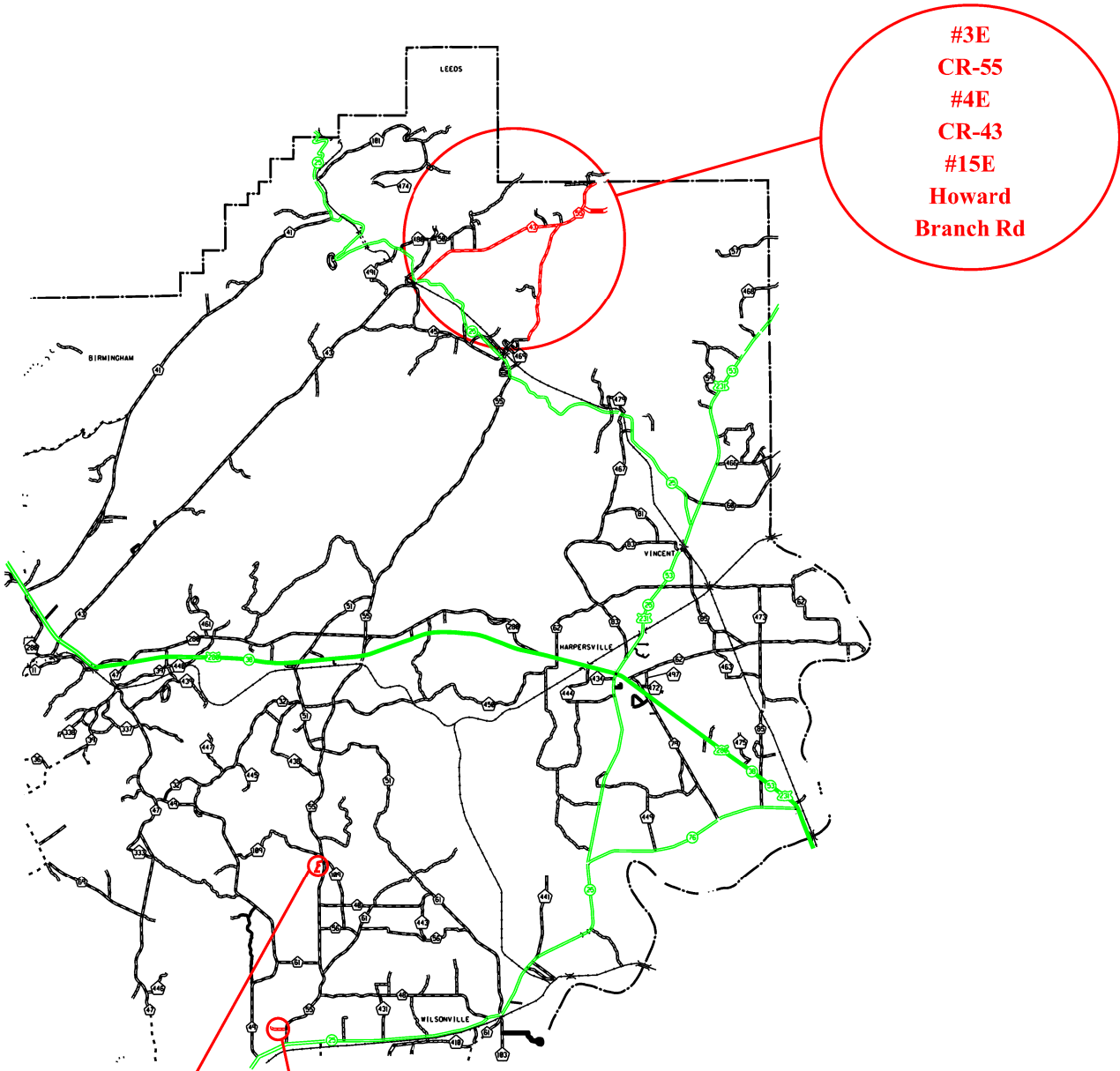
COUNTY COMMISSIONERS

| | |
|---------------------------------|------------------------------|
| DISTRICT #1 KEVIN MORRIS | DISTRICT #2 TOMMY EDWARDS |
| DISTRICT #3 JON PARKER | DISTRICT #4 WARD WILLIAMS |
| DISTRICT #5 ELWYN BEARDEN | DISTRICT #6 JOSH SISK |
| DISTRICT #7 LINDSEY ALLISON | DISTRICT #8 RICK SHEPHERD |
| DISTRICT #9 DR. ROBBIE HAYES | |

NOTE : THESE PLANS HAVE BEEN PREPARED TO
CONFORM WITH ALABAMA DEPARTMENT
OF TRANSPORTATION STANDARD
SPECIFICATIONS DATED 2022.

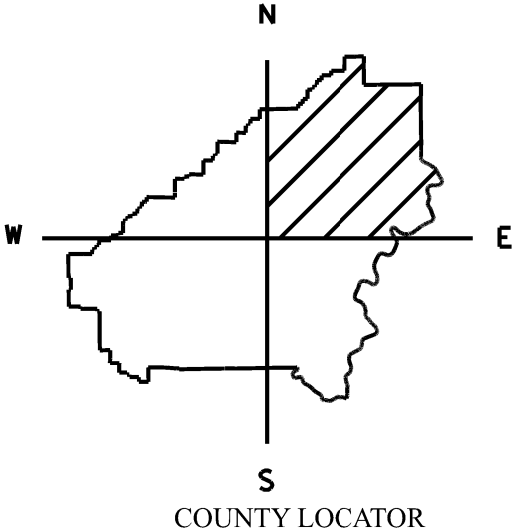
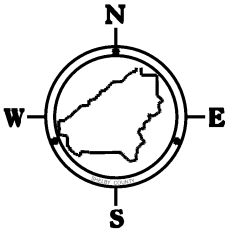
| | | |
|----------------------|-------------|----------|
| REFERENCE PROJECT NO | FISCAL YEAR | SHEET NO |
| SCP 59-969-25 (EAST) | 2025 | 1A |

PROJECT LOCATIONS PLANS OF PROPOSED PROJECT SCP 59-969-25 (EAST)



NOT TO SCALE

| LEGEND | |
|-----------------------|--|
| INTERSTATE HIGHWAY | |
| U.S. & STATE HIGHWAYS | |
| GRADED & DRAINED ROAD | |
| COUNTY PAVED ROAD | |
| RAILROAD | |



REFERENCE PROJECT NO

FISCAL YEAR

SHEET NO

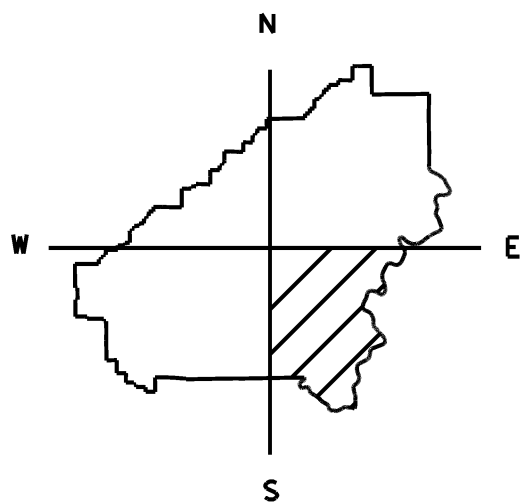
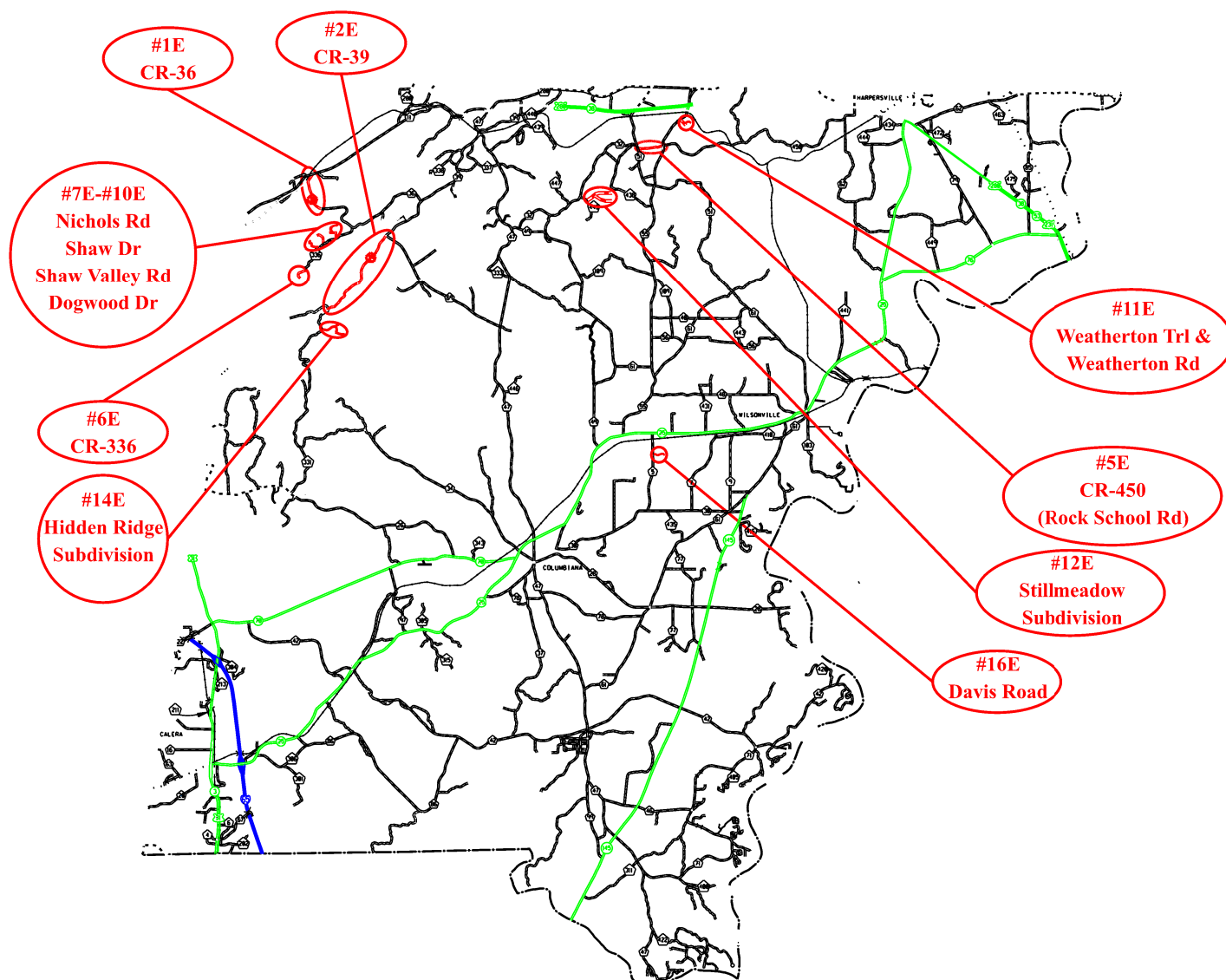
SCP 59-969-25 (EAST)

2025

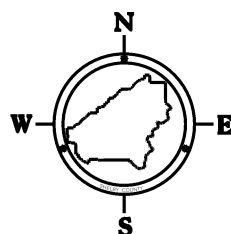
1B

PROJECT LOCATIONS

PLANS OF PROPOSED PROJECT SCP 59-969-25 (EAST)



COUNTY LOCATOR



NOT TO SCALE

LEGEND

INTERSTATE HIGHWAY
U.S. & STATE HIGHWAYS
GRADED & DRAINED ROAD
COUNTY PAVED ROAD
RAILROAD



| REFERENCE PROJECT NO | FISCAL YEAR | SHEET NO |
|----------------------|-------------|----------|
| SCP 59-969-25 (EAST) | 2025 | 1C |

INDEX TO SHEETS
PROJECT NO. SCP 59-969-25 (EAST)
SHELBY COUNTY

| | |
|------------------|--------------------------------|
| SHEET NO. 1 | TITLE SHEET |
| SHEET NO. 1A-1B | PROJECT LOCATIONS |
| SHEET NO. 1C | INDEX TO SHEETS |
| SHEET NO. 2-2E | TYPICAL SECTIONS |
| SHEET NO. 2F | UNIT DESCRIPTIONS |
| SHEET NO. 2G-2H | PROJECT NOTES |
| SHEET NO. 2-I-2J | TRAFFIC CONTROL NOTES |
| SHEET NO. 3 | SUMMARY OF QUANTITIES |
| SHEET NO. 3A-3C | SUMMARY OF QUANTITIES PER UNIT |
| SHEET NO. 4-5 | TRAFFIC CONTROL PLANS |

THE FOLLOWING IS A LIST OF STANDARD OR SPECIAL DRAWINGS CONTAINED IN THE
ALABAMA DEPARTMENT OF TRANSPORTATION SPECIAL AND STANDARD HIGHWAY DRAWINGS
BOOKLET DATED 2025 WHICH APPLY TO THIS PROJECT:

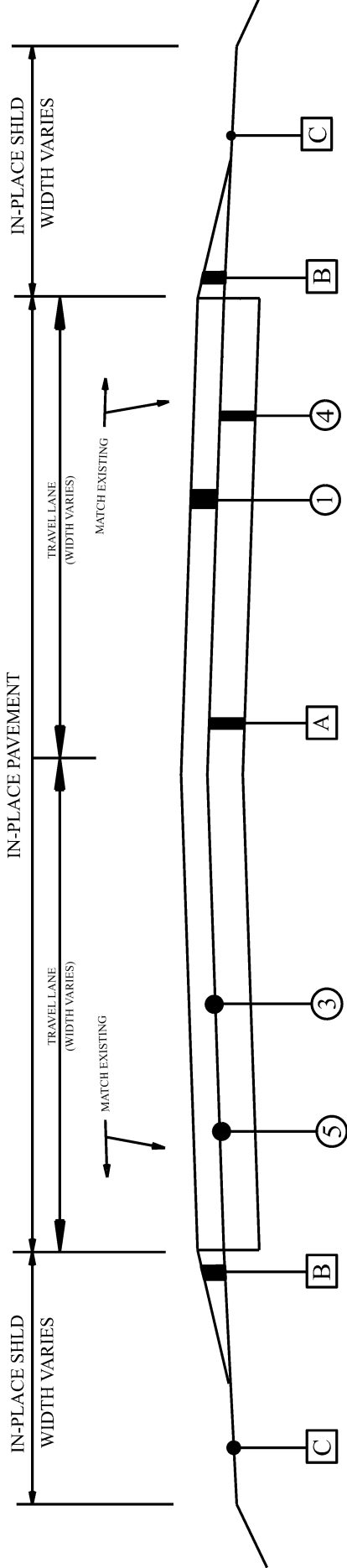
| <u>INDEX NO.</u> | <u>DRAWING NO.</u> | <u>DESCRIPTION</u> |
|------------------|--------------------|---|
| 20901 | MB-209-1 | DETAILS OF MOUNTING MAILBOXES (SHEET 1 OF 3) |
| 20902 | MB-209-1 | DETAILS OF MOUNTING MAILBOXES (SHEET 2 OF 3) |
| 20903 | MB-209-1 | DETAILS OF MOUNTING MAILBOXES (SHEET 3 OF 3) |
| 68004 | TO-107 | DETAILS OF INTERSECTIONS AND TURNOUTS |
| 68019 | SSEC-1 | STANDARD SUPERELEVATION OF CURVES (SHEET 4 OF 14) |
| 70101 | PS-701-6 | DETAILS OF TRAFFIC STRIPING FOR TWO LANE HIGHWAYS |
| 70104 | 197-NPL | DETAILS NO PASSING LINES - TWO LANE, TWO DIRECTION ROADWAY |
| 70301 | TCM-703 | PAVEMENT LEGENDS & MARKINGS (SHEET 1 OF 2) |
| 70302 | TCM-703 | PAVEMENT LEGENDS & MARKINGS (SHEET 2 OF 2) |
| 70501 | PM-705-1 | DETAILS OF PAVEMENT MARKERS CLASS A, A-H & B |
| 70504 | PM-705-2 | DETAILS SHOWING APPLICATION OF PAVEMENT MARKERS |
| 71017 | IHS-710-12 | DETAILS OF ROADWAY SIGN POSTS (SMALL CHANNEL AND TUBULAR SECTION) |
| 71032 | IHS-710-21 | DETAILS FOR LOCATION AND MOUNTING STANDARD FLAT PANEL SIGNS ON U-CHANNEL AND TUBULAR POSTS |
| 71069 | SHS-10 | STANDARD HIGHWAY SIGNS |
| 71090 | SHS-26 | STANDARD HIGHWAY SIGNS |
| 71091 | SHS-27 | STANDARD HIGHWAY SIGNS |
| 71092 | SHS-28 | STANDARD HIGHWAY SIGNS |
| 71093 | SHS-29 | STANDARD HIGHWAY SIGNS |
| 71094 | SHS-30 | STANDARD HIGHWAY SIGNS |
| 71095 | SHS-31 | STANDARD HIGHWAY SIGNS |
| 74007 | TCD-100 | DETAILS FOR TRAFFIC CHANNELIZATION DEVICES |
| 74201 | PCMS-710 | DETAILS OF PORTABLE CHANGEABLE MESSAGE SIGNS (SHEET 1 OF 3) |
| 74202 | PCMS-710 | DETAILS OF PORTABLE CHANGEABLE MESSAGE SIGNS (SHEET 2 OF 3) |
| 74203 | PCMS-710 | DETAILS OF PORTABLE CHANGEABLE MESSAGE SIGNS (SHEET 3 OF 3) |

PROJECT NOTES: 201,202,203,204,205,206,
207,213,214,215,216,218,
219,221,222,223

TYPICAL SECTION
PROJECT NO. SCP 59-969-25 (EAST)
SHELBY COUNTY

| PROJECT NUMBER | FISCAL YEAR | SHEET NO. | LAST SHEET |
|----------------------|-------------|-----------|------------|
| SCP 59-969-25 (EAST) | 2025 | 2 | 5 |

TYPICAL SECTION APPLIES TO UNITS: 1E (CR-36), 2E (CR-39), 3E (CR-55),
4E (CR-43), 5E (CR-450), 6E (CR-336), 10E (DOGWOOD DR), 11E (WEATHERTON TRL/RD),
12E (STILLMEADOW SUBDIV.), 13E (SHADOW OAKS SUBDIV.), &
14E (HIDDEN RIDGE SUBDIV.)



LEGEND

ITEM UNIT DESCRIPTION

- ①

424A-361

TON

REQ'D SUPERPAVE BITUMINOUS CONCRETE WEARING SURFACE LAYER, 3/4" MAXIMUM AGGREGATE SIZE MIX, ESAL RANGE C/D (165-185 LBS/SY; REFER TO SHEET 2D FOR RATES)
- ③

401B-111

SQ YD

REQ'D BITUMINOUS TREATMENT G, CRS-2 (WITH POLYMER ADDITIVE)
- ④

424B-656

TON

REQ'D SUPERPAVE BITUMINOUS CONCRETE UPPER BINDER LAYER, PATCHING, 1 1/2" MAXIMUM AGGREGATE SIZE MIX, ESAL RANGE C/D (440 LBS/SY OR AS DIRECTED BY ENGINEER)
- ⑤

424B-658

TON

REQ'D SUPERPAVE BITUMINOUS CONCRETE UPPER BINDER LAYER, LEVELING, 3/4" MAXIMUM AGGREGATE SIZE MIX, ESAL RANGE C/D (THICKNESS VARIES AS DIRECTED BY ENGINEER)

IN-PLACE PAVEMENT (RETAIN)

CONTRACTOR SHALL BE RESPONSIBLE FOR TEMPORARY DROP-OFFS; PERMANENT SHOULDER WORK TO BE PERFORMED BY SHELBY COUNTY (REFER TO SHEET 5)

IN-PLACE SHOULDER (RETAIN)

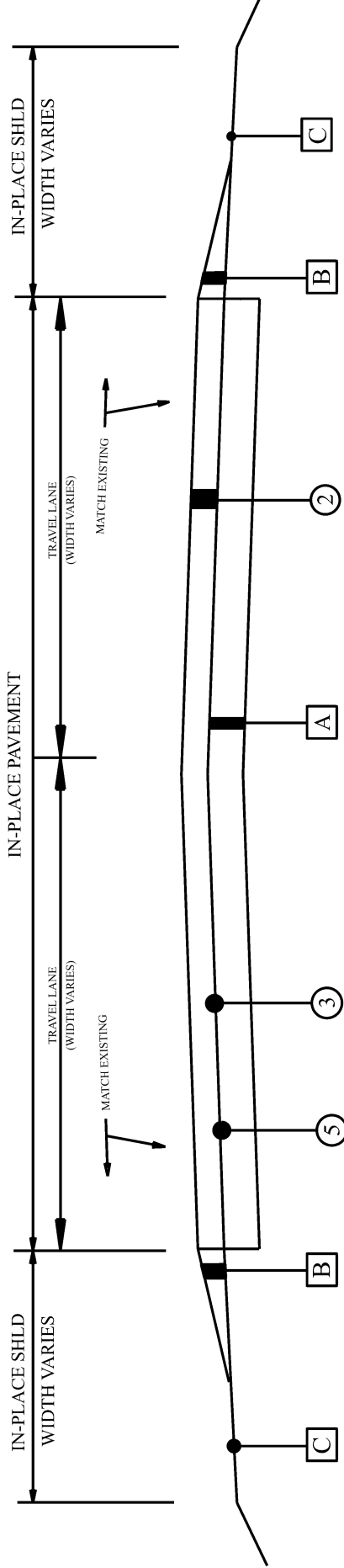
NOT TO SCALE

PROJECT NOTES: 201,202,203,204,205,206,
207,213,214,215,216,218,
219,221,222,223

TYPICAL SECTION
PROJECT NO. SCP 59-969-25 (EAST)
SHELBY COUNTY

| PROJECT NUMBER | FISCAL YEAR | SHEET NO. | LAST SHEET |
|----------------------|-------------|-----------|------------|
| SCP 59-969-25 (EAST) | 2025 | 2A | 5 |

TYPICAL SECTION APPLIES TO UNITS: 7E (NICHOLS RD), 8E (SHAW DRIVE)
& 9E (SHAW VALLEY ROAD)



LEGEND

DESCRIPTION

ITEM UNIT

② 424A-340 TON REQ'D SUPERPAVE BITUMINOUS CONCRETE WEARING SURFACE LAYER, 1/2" MAXIMUM AGGREGATE SIZE MIX, ESAL RANGE C/D (165 LBS/SY)

③ 401B-111 SQ YD REQ'D BITUMINOUS TREATMENT G, CRS-2 (WITH POLYMER ADDITIVE)

⑤ 424B-658 TON REQ'D SUPERPAVE BITUMINOUS CONCRETE UPPER BINDER LAYER, LEVELING, 3/4" MAXIMUM AGGREGATE SIZE MIX, ESAL RANGE C/D (THICKNESS VARIES AS DIRECTED BY ENGINEER)

IN-PLACE PAVEMENT (RETAIN)

CONTRACTOR SHALL BE RESPONSIBLE FOR TEMPORARY DROP-OFFS; PERMANENT SHOULDER WORK TO BE PERFORMED BY SHELBY COUNTY (REFER TO SHEET 5)

IN-PLACE SHOULDER (RETAIN)

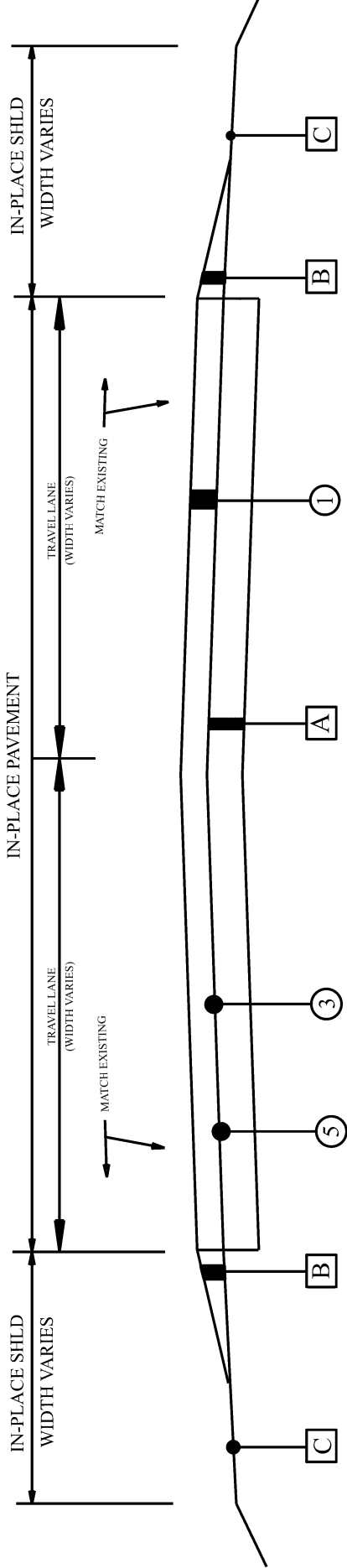
| |
|---|
| A |
| B |
| C |

PROJECT NOTES: 201,202,203,204,205,206,
207,213,214,215,216,218,
219,221,222,223

TYPICAL SECTION
PROJECT NO. SCP 59-969-25 (EAST)
SHELBY COUNTY

| PROJECT NUMBER | FISCAL YEAR | SHEET NO. | LAST SHEET |
|----------------------|-------------|-----------|------------|
| SCP 59-969-25 (EAST) | 2025 | 2B | 5 |

TYPICAL SECTION APPLIES TO UNITS: 15E (HOWARD BRANCH RD) & 16E (DAVIS ROAD)



LEGEND

ITEM UNIT DESCRIPTION

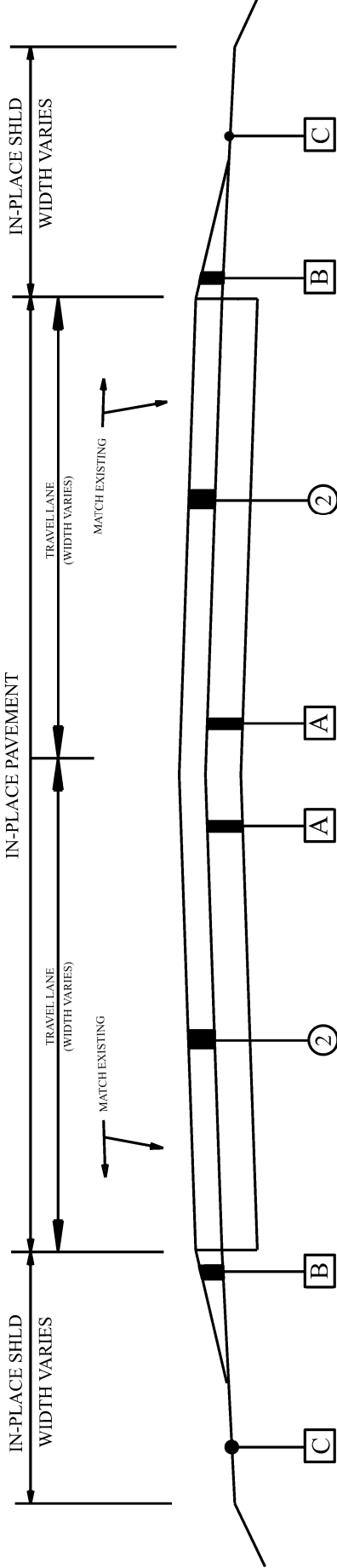
| | | | |
|---|----------|-------|--|
| ① | 424A-361 | TON | REQ'D SUPERPAVE BITUMINOUS CONCRETE WEARING SURFACE LAYER, 3/4" MAXIMUM AGGREGATE SIZE MIX, ESAL RANGE C/D (165 LBS/SY) |
| ③ | 401B-111 | SQ YD | REQ'D BITUMINOUS TREATMENT G, CRS-2 (WITH POLYMER ADDITIVE) |
| ⑤ | 424B-658 | TON | REQ'D SUPERPAVE BITUMINOUS CONCRETE UPPER BINDER LAYER, LEVELING, 3/4" MAXIMUM AGGREGATE SIZE MIX, ESAL RANGE C/D (THICKNESS VARIES AS DIRECTED BY ENGINEER) |
| A | | | IN-PLACE PAVEMENT (RETAIN) |
| B | | | CONTRACTOR SHALL BE RESPONSIBLE FOR TEMPORARY DROP-OFFS; PERMANENT SHOULDER WORK TO BE PERFORMED BY SHELBY COUNTY (REFER TO SHEET 5) |
| C | | | IN-PLACE SHOULDER (RETAIN) |

PROJECT NOTES: 201,202,203,204,205,206,
207,213,214,215,216,218,
219,221,222,223

TYPICAL SECTION
PROJECT NO. SCP 59-969-25 (EAST)
SHELBY COUNTY

| PROJECT NUMBER | FISCAL YEAR | SHEET NO. | LAST SHEET |
|----------------------|-------------|-----------|------------|
| SCP 59-969-25 (EAST) | 2025 | 2C | 5 |

TYPICAL SECTION APPLIES TO UNITS: 17E (HIDDEN MEADOWS LN)



LEGEND

ITEM UNIT

DESCRIPTION

② 424A-340 TON REQ'D SUPERPAVE BITUMINOUS CONCRETE WEARING SURFACE LAYER, 1/2" MAXIMUM AGGREGATE SIZE MIX, ESAL RANGE C/D (165 LBS/SY)

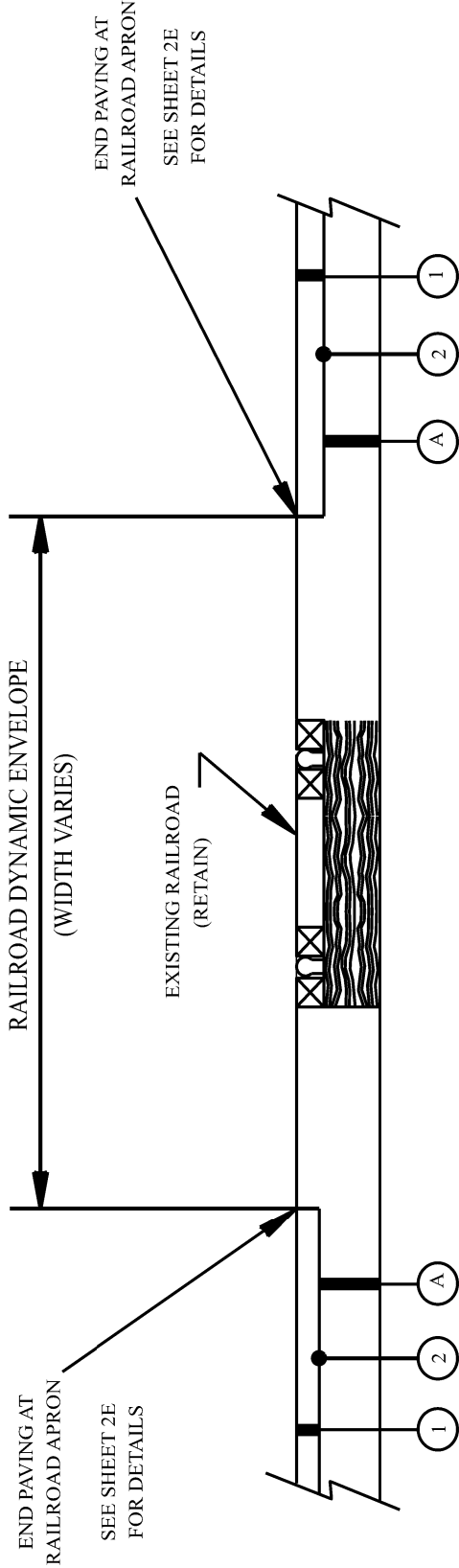
- A
- B
- C

IN-PLACE PAVEMENT (RETAIN)
CONTRACTOR SHALL BE RESPONSIBLE FOR TEMPORARY DROP-OFFS; PERMANENT SHOULDER WORK TO BE PERFORMED BY SHELBY COUNTY (REFER TO SHEET 5)
IN-PLACE SHOULDER (RETAIN)

TYPICAL SECTION
PROJECT NO. SCP 59-969-25 (EAST)
SHELBY COUNTY

| PROJECT NUMBER | FISCAL YEAR | SHEET NO. | LAST SHEET |
|----------------------|-------------|-----------|------------|
| SCP 59-969-25 (EAST) | 2025 | 2D | 5 |

SKETCH SHOWING RESURFACING AT RAILROAD CROSSINGS:



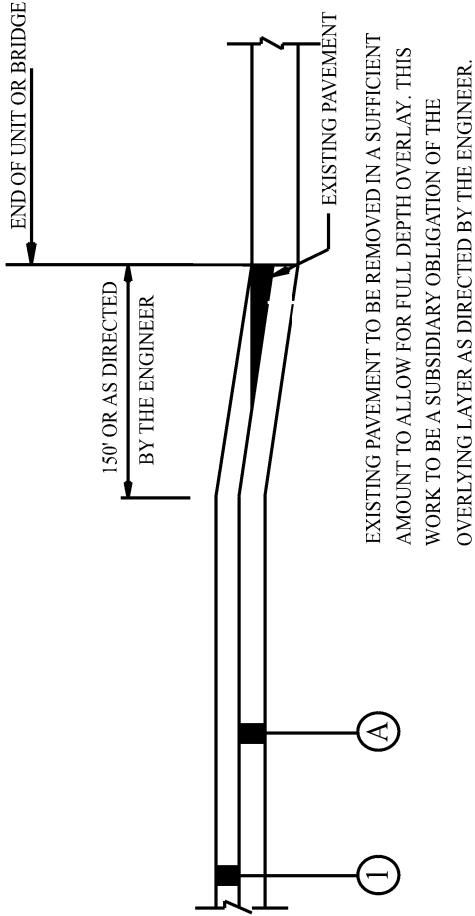
LEGEND

| ITEM | UNIT | DESCRIPTION |
|------------|-------|---|
| ① 424A-361 | TON | REQ'D SUPERPAVE BITUMINOUS CONCRETE WEARING SURFACE LAYER, 3/4" MAXIMUM AGGREGATE SIZE MIX, ESAL RANGE C/D (SEE SHEET 2E FOR APPLICATION RATES) |
| ② 408A-052 | SQ YD | REQ'D PLANING EXISTING PAVEMENT (APPROXIMATELY 1.10" THRU 2.0" THICK) |
| Ⓐ | | IN-PLACE PAVEMENT RETAIN |

NOT TO SCALE

TYPICAL SECTION
PROJECT NO. SCP 59-969-25 (EAST)
SHELBY COUNTY

| PROJECT NUMBER | FISCAL YEAR | SHEET NO. | LAST SHEET |
|----------------------|-------------|-----------|------------|
| SCP 59-969-25 (EAST) | 2025 | 2E | 5 |



SKETCH SHOWING PAVEMENT TIE IN AT BEGIN/END OF UNIT,
AT BRIDGE ENDS AND RR X-INGS

LEGEND

| ITEM | UNIT |
|----------|------|
| 424A-361 | TON |

1 REQ'D SUPERPAVE BITUMINOUS CONCRETE WEARING SURFACE LAYER, 3/4" MAXIMUM AGGREGATE SIZE MIX, ESAL RANGE C/D (SEE SHEET 2E FOR APPLICATION RATES)

A IN-PLACE PAVEMENT (PLANE AS REQUIRED)

NOT TO SCALE

| Unit Descriptions | | | | | | | Reference Project No | Fiscal Year | Sheet No |
|---------------------------------|--------------------------------------|--|--------|-------|---|--|----------------------|-------------|----------|
| County Named and Numbered Roads | | | | | | | SCP 59-969-25 (East) | 2025 | 2F |
| Unit # | Name or Road # | Description | Length | Width | Comment | | | | |
| | | | Ft | Ft | | | | | |
| #1E | CR-36 | From CR-11 East to just past Oaklyn Hills Drive | 4,296 | 22 | Patch, "G" treat, Spot Level, Seal 185# ¾" Mix, Restripe | | | | |
| #2E | CR-39 | From Griffin Road north to CR-69 | 13,782 | 22 | Patch, "G" treat, Spot Level, Seal 185# ¾" Mix, Restripe | | | | |
| #3E | CR-55 | From end of bridge project to St. Clair Co. line | 24,329 | 20 | Patch, "G" treat, Spot Level, Seal 185# ¾" Mix, Restripe | | | | |
| #4E | CR-43 | From AL-25 north to CR-55 | 18,691 | 20 | Patch, "G" treat, Spot Level, Seal 185# ¾" Mix, Restripe | | | | |
| #5E | CR-450 (Rock School Road) | From CR-51 east to CR-55 | 3,544 | 20 | Patch, "G" treat, Spot Level, Seal 165# ¾" Mix, Restripe | | | | |
| #6E | CR-336 | South of Deer Ridge at the end | 840 | 14 | Patch, "G" treat, Spot Level, Seal 165# ½" Mix | | | | |
| #7E | Nichols Road | In Chelsea off CR-336 | 1,873 | 12 | "G" treat, Seal 200# ½" Mix | | | | |
| #8E | Shaw Drive | In Chelsea off CR-336 | 1,305 | 15 | "G" treat, Seal 165# ½" Mix | | | | |
| #9E | Shaw Valley Road | Off Shaw Drive off of CR-336 | 1,580 | 12 | "G" treat, Seal 165# ½" Mix | | | | |
| #10E | Dogwood Drive | In Chelsea off CR-336 | 1,814 | 16 | Patch, "G" treat, Seal 200# ½" Mix | | | | |
| #11E | Weatherthon Trail and Weatherthon Rd | In Weatherthon Woods Estates, East off CR-55 South of US-280 | 1,430 | 20 | Patch, "G" treat, Spot Level, Seal 165# ½" Mix | | | | |
| #12E | Still Meadows Subdivision | South off CR-32 off Dorrough road | 3,896 | 20 | Patch, "G" treat, Spot Level, Seal 165# ½" Mix | | | | |
| #13E | Shadow Oaks Subdivision | West off CR-55 at intersection with CR-109 | 4,775 | 22 | Patch, "G" treat, Spot Level, Seal 165# ½" Mix, Stop bars | | | | |
| #14E | Hidden Ridge Subdivision | East off CR-331 to road's end (includes Bowden Cir) | 5,795 | 22 | Patch, "G" treat, Spot Level, Seal 165# ½" Mix | | | | |
| #15E | Howard Branch Road | East off CR-55, north of intersection with CR-43 | 440 | 12 | Patch, "G" treat, Seal 165# ¾" Mix, Stop Bar | | | | |
| #16E | Davis Road | East off CR-5 to roads end | 1,200 | 18 | "G" treat, Spot Level, Seal 165# ¾" Mix, Stop Bar | | | | |
| #17E | Hidden Meadows Lane | West off CR-55 to road's end | 1,418 | 23 | Seal 165# ½" Mix | | | | |

| REFERENCE PROJECT NO | FISCAL YEAR | SHEET NO |
|----------------------|-------------|----------|
| SCP 59-969-25 (EAST) | 2025 | 2G |

PROJECT NOTES
PROJECT NO. SCP 59-969-25 (EAST)
SHELBY COUNTY

- 201: THE MINIMUM REQUIREMENTS FOR PAVING OF TURNOUTS SHALL BE AS FOLLOWS, UNLESS OTHERWISE DIRECTED BY PROJECT ENGINEER:
- a. CITY STREETS, COUNTY ROADS AND STATE HIGHWAYS--PAVE TO THE BACK OF RADIUS WITH JOINTS MILLED BY MILLING MACHINE FULL WIDTH AS DESIGNATED BY PROJECT ENGINEER.
 - b. BUSINESS DRIVEWAYS--PAVE TO THE BACK OF THE EXISTING SHOULDER.
 - c. ALL OTHER TURNOUTS--PAVE A MINIMUM OF 3'.
 - d. PARTICULAR ATTENTION WILL BE GIVEN TO THE SLOPE OF ALL DRIVES EITHER RESIDENTIAL OR COMMERCIAL TO ASSURE EASY PASSAGE ON AND OFF THE ROADWAY. IT WILL BE THE RESPONSIBILITY OF THE CONTRACTOR TO EITHER MAKE NECESSARY ADJUSTMENTS DURING ONGOING PHASES OF PAVING OPERATION OR ADJUST AT A LATER DATE AS DIRECTED BY THE PROJECT ENGINEER.
- 202: RESURFACING OVERLAYS SHALL MATCH EXISTING SUPERELEVATION OF HORIZONTAL CURVE.
- 203: ALL SHOULDERS ON ALL UNITS SHALL BE CLIPPED AND BROOMED TO THE ENGINEER'S SATISFACTION PRIOR TO ANY AND ALL RESURFACING.
- 204: ALL EXCESS STONE WILL BE THE RESPONSIBILITY OF THE CONTRACTOR TO REMOVE FROM INTERSECTIONS, PARKING LOTS, DRIVEWAYS, AND ALL PUBLIC PROPERTIES. ALL EXCESS STONE SHALL BE REMOVED DAILY, UNLESS OTHERWISE DIRECTED BY THE PROJECT ENGINEER.
- 205: ALL SUBDIVISION UNIT TRUCK LOAD LIMITS SHALL BE IN ACCORDANCE WITH SHELBY COUNTY, TRUCK WEIGHT ORDINANCE (9 TONS PER AXLE). TRUCK WEIGHTS MAY BE RESTRICTED ON OTHER UNITS AT SHELBY COUNTY'S DISCRETION.
- 206: ITEM 424B-658, BITUMINOUS CONCRETE PLANT MIX, LEVELING $\frac{3}{4}$ " MAX ESAL C/D SHALL BE APPLIED AS DIRECTED BY THE PROJECT ENGINEER.
- 207: CONTRACTOR SHALL TIE BEGINNING AND ENDING OF PROJECT AND AT BRIDGE CROSSINGS AS SHOWN IN THE SKETCH ON SHEET 2E.
- 208: MOBILIZATION AND CONSTRUCTION FUEL SHALL BE A SUBSIDIARY OBLIGATION OF THE CONTRACT.
- 209: EXCESS MATERIAL THAT CANNOT BE USED TO FLUSH SLOPES WITHIN A PROJECT AREA SHALL BE WASTED AS DIRECTED BY THE PROJECT ENGINEER.
- 210: CONTRACTOR IS ULTIMATELY RESPONSIBLE FOR THE CONTINUOUS AND PROPER OPERATION OF ALL EXISTING UTILITIES. THE COUNTY ENGINEER SHALL COORDINATE RELOCATION OF UTILITIES WITH THE AFFECTED UTILITY COMPANIES.
- 211: CONTRACTOR IS RESPONSIBLE FOR MAKING CONTACT WITH LOCAL WATER AUTHORITIES AND OBTAINING PERMISSION OR A METER WITH WHICH TO ACQUIRE WATER FOR USE DURING THE PROJECT.
- 212: BASE LAYER COMPACTION SHALL MEET 100% OF THE MAXIMUM THEORETICAL DENSITY OF THE MATERIAL SPECIFIED TO THE SATISFACTION OF THE COUNTY ENGINEER.
- 213: ITEM 405A-000 SHALL BE MECHANICALLY APPLIED TO ACHIEVE UNIFORM DISTRIBUTION. HAND APPLICATION WILL BE ALLOWED ONLY ON TURNOUTS AND INTERSECTIONS.
- 214: UNITS #1E (CR-36), #2E (CR-39), #3E (CR-55) & #4E (CR-43) ARE DESIGNATED AS REBUILD ALABAMA ACT UNITS. THE CONTRACTOR SHALL INSTALL REBUILD ALABAMA SIGNAGE AT EACH END OF THE APPLICABLE UNITS PRIOR TO CONSTRUCTION. DETAILS AND SPECIFICATIONS ON THE REQUIRED SIGN RA-1 ARE INCLUDED ON THE ALDOT STANDARD DRAWING SHS-10, INDEX 71069. THE COST FOR THE PROCUREMENT AND INSTALLATION OF THESE SIGNS IS SUBSIDIARY TO THE CONTRACT.
- 215: ANY MAILBOX RESETS REQUIRED TO COMPLETE THE WORK IN THIS CONTRACT SHALL BE PERFORMED BY THE CONTRACTOR AND IS A SUBSIDIARY OBLIGATION OF THE CONTRACT.
- 216: ANY ROADWAYS WITH A TOTAL WIDTH OF LESS THAN 20' SHALL BE PAVED USING A MATERIAL STRIKE OFF PLATE.

| REFERENCE PROJECT NO | FISCAL YEAR | SHEET NO |
|----------------------|-------------|----------|
| SCP 59-969-25 (EAST) | 2025 | 2H |

PROJECT NOTES
PROJECT NO. SCP 59-969-25 (EAST)
SHELBY COUNTY

- 217: IT SHALL BE THE CONTRACTOR'S RESPONSIBILITY TO INVENTORY ALL IN-PLACE STRIPING, MARKINGS AND LEGENDS AND REFERENCE THE LOCATIONS, SO THAT ALL REQUIRED STRIPING, MARKINGS AND LEGENDS SHALL BE PLACED BACK IN THE SAME LOCATIONS AS THEY WERE BEFORE RESURFACING OPERATIONS BEGAN. THE WORK INVOLVED IN INVENTORYING AND REFERENCING SHALL BE A SUBSIDIARY OBLIGATION OF ITEM 701A-230. IF IN-PLACE STRIPING, MARKINGS AND LEGENDS DIFFER FROM REQUIREMENTS ON STANDARD DRAWINGS OR MUTCD, THE PROJECT ENGINEER SHALL BE NOTIFIED BEFORE WORK BEGINS.
- 218: ALL PATCHING SHALL BE IN ACCORDANCE WITH ITEM 410.03(c) AND SUBARTICLE 410.09(a) AND COMPLETED PRIOR TO RESURFACING. PATCHES SHALL BE A MINIMUM WIDTH OF 7'-0" AND MINIMUM DEPTH OF 4". THE EXACT LOCATION, WIDTH, LENGTH AND DEPTH SHALL BE DETERMINED BY THE ENGINEER.
- 219: IF A DROP OFF OCCURS IN A TRANSVERSE DIRECTION DURING THE CONSTRUCTION OF THIS PROJECT, THE CONTRACTOR SHALL CONSTRUCT A TEMPORARY BITUMINOUS WEDGE AS DIRECTED BY THE ENGINEER. THE WORK, IF REQUIRED, SHALL BE PAID FOR AS ITEM 424A-340 OR 424A-361 DEPENDING UPON LOCATION OF WEDGE.
- 220: TEMPORARY TRAFFIC CONTROL MAKINGS SHALL BE USED FOR STOP LINES ONLY. 4 INCH TEMPORARY STRIPE SHALL BE USED FOR A TEMPORARY CHANNELIZING STRIPE AS DIRECTED BY THE ENGINEER.
- 221: ANY DAMAGE TO IN-PLACE PAVING, CURB AND GUTTER, SIDEWALK, GRASSING ETC. SHALL BE REPAIRED BY THE CONTRACTOR TO THE SATISFACTION OF THE ENGINEER AT NO COST TO THE PROJECT.
- 222: REMOVAL OF PAVEMENT MARKERS PRIOR TO RESURFACING SHALL BE PERFORMED BY THE CONTRACTOR. THE COST OF THIS WORK SHALL BE A SUBSIDIARY OBLIGATION OF THE CONTRACT.
- 223: THE PRIME CONTRACTOR SHALL INSTALL A MINIMUM OF 70% OF THE TOTAL TONNAGE REQUIRED FOR ITEMS 424A-340 AND 424A-361 UNLESS OTHERWISE APPROVED BY THE SHELBY COUNTY ENGINEER.
- 224: ALL FINAL STRIPING SHALL BE INSTALLED WITH A SHELBY COUNTY INSPECTOR ON SITE.
- 225: THE CONTRACTOR WILL HAVE 15 WORKING DAYS AFTER THE CURING PERIOD TO INSTALL PERMANENT TRAFFIC STRIPE AND PAVEMENT MARKERS. IF THESE ITEMS ARE NOT INSTALLED WITHIN 15 WORKING DAYS AFTER THE CURING PERIOD, THE CONTRACTOR SHALL BE RESPONSIBLE FOR APPLYING TEMPORARY APPLICATIONS EVERY MONTH UNTIL THESE ITEMS ARE COMPLETE. THIS NOTE ONLY APPLIES TO UNITS 1E (CR-36), 2E (CR-39), 3E (CR-55) AND 4E (CR-43).
- 226: THE CONTRACTOR SHALL PROVIDE AN OFF-DUTY POLICE OFFICER ON SITE FOR TRAFFIC CONTROL WHEN WORKING AT NIGHT. ANY ADDITIONAL COSTS ASSOCIATED WITH NIGHT WORK INCLUDING, BUT NOT LIMITED TO SIGNS, LIGHTS, POLICE OFFICERS, ETC. SHALL BE THE RESPONSIBILITY OF THE CONTRACTOR AND SHALL BE CONSIDERED A SUBSIDIARY OBLIGATION OF THE CONTRACT. THE CONTRACTOR SHALL NOTIFY THE SHELBY COUNTY HIGHWAY DEPARTMENT A MINIMUM OF ONE MONTH IN ADVANCE OF ANY NIGHT WORK.
- 227: NO SECTION OF PAVEMENT SHALL BE LEFT OVERNIGHT WITHOUT TRAFFIC STRIPING OR RAILROAD MARKINGS BEING IN PLACE. THIS INCLUDED BITUMINOUS TREATMENT "G" AND FINAL WEARING LAYER.
- 228: ANY MANHOLE OR UTILTIY RESETS NECESSARY TO COMPLETE THE WORK SHALL BE PERFORMED BY THE CONTRACTOR. THE COST OF THIS WORK SHALL BE A SUBSIDIARY OBLIGATION OF THE CONTRACT.
- 229: UNIT 1E (CR-36) SHALL BE INITIATED AND COMPLETED AFTER MAY 22, 2025 AND PRIOR TO AUGUST 7, 2025. UNIT 1E SHALL ALSO HAVE NO LANE CLOSURES BETWEEN THE HOURS OF 6:00-8:30 AM OR 4:00-6:00 PM UNLESS OTHERWISE DIRECTED BY THE PROJECT ENGINEER.
- 230: THE CONTRACTOR SHALL COMPLETE THE ENTIRE PROJECT BY OCTOBER 24, 2025.

| REFERENCE PROJECT NO | FISCAL YEAR | SHEET NO |
|----------------------|-------------|----------|
| SCP 59-969-25 (EAST) | 2025 | 2-I |

TRAFFIC CONTROL NOTES
PROJECT NO. SCP 59-969-25 (EAST)
SHELBY COUNTY

700. THE TRAFFIC CONTROL PLAN IS DEVELOPED IN CONFORMANCE WITH THE MANUAL ON UNIFORM TRAFFIC CONTROL DEVICES PART 6, 2009 EDITION. THE TRAFFIC CONTROL DEVICES INDICATED REPRESENT CONDITIONS KNOWN DURING PLAN DEVELOPMENT. IN THE EVENT ACTUAL PHYSICAL CONDITIONS WARRANT ADDITIONAL TRAFFIC CONTROL DEVICES, THEY SHALL BE INSTALLED IN CONFORMANCE WITH THE MUTCD PART 6 AS DIRECTED BY THE ENGINEER. COST SHALL BE PAID FOR AS A SUBSIDIARY OBLIGATION.
701. THE CONTRACTOR WILL BE PERMITTED TO DEVELOP HIS OWN TRAFFIC CONTROL PLAN TO BE USED IN LIEU OF THIS TRAFFIC CONTROL PLAN IF APPROVED BY THE ENGINEER. A CONTRACTOR DEVELOPED TRAFFIC CONTROL PLAN SHALL BE A SUBSIDIARY COST OF THE CONTRACT.
702. THE CONTRACTOR SHALL ENSURE THAT ALL TRAFFIC CONTROL DEVICES ARE PLACED AS REQUIRED IN THE TRAFFIC CONTROL PLANS AND ARE IN SERVICEABLE CONDITION AT ALL TIMES.
703. ALL SIGNS AND BARRICADES MAY BE ADJUSTED BY THE ENGINEER FOR THE SAFETY OF THE TRAVELING PUBLIC WHEN NECESSARY.
704. ADDITIONAL SIGNS MAY BE REQUIRED IF DEEMED NECESSARY BY THE ENGINEER. ADDITIONAL ITEMS TO BE A SUBSIDIARY COST OF THE CONTRACT.
705. NO DIRECT PAYMENT WILL BE MADE FOR REMOVING, RELOCATING, OR COVERING OF IN PLACE SIGNS, BARRELS, BARRICADES, OR OTHER TRAFFIC CONTROL DEVICES AS REQUIRED IN THIS TRAFFIC CONTROL PLAN (SEE SPECIAL DRAWING NO. TCD-100 IN THE ALABAMA DEPARTMENT OF TRANSPORTATION'S SPECIAL AND STANDARD HIGHWAY DRAWINGS, 2024 EDITION). COST TO BE A SUBSIDIARY OBLIGATION OF THE CONTRACT.
706. THE QUANTITIES SHOWN ON THE TRAFFIC CONTROL PLAN SHEET ARE CONSIDERED TO BE THE MINIMUM REQUIREMENT FOR HANDLING TRAFFIC AT ANY GIVE TIME DURING CONSTRUCTION.
707. THE CONTRACTOR IS TO REMOVE, RELOCATE, OR COVER DURING CONSTRUCTION AND THEN RESET OR UNCOVER UPON COMPLETION OF A PARTICULAR SECTION ANY CONFLICTING IN-PLACE ROADWAY SIGNS AS DIRECTED BY THE ENGINEER. COST TO BE A SUBSIDIARY OBLIGATION OF THE CONTRACT.
708. ALL CONSTRUCTION SIGNS PLACED BEFORE WORK BEGINS SHALL BE COVERED WITH BLACK PLASTIC OR SOME OTHER SUITABLE MATERIAL SO THAT THE SIGNS ARE NOT VISIBLE UNTIL WORK IS IN PROGRESS.
709. ALL TRAFFIC CONTROL DEVICES SHALL BE A SUBSIDIARY COST OF THE CONTRACT.
710. ALL BLACK ON ORANGE CONSTRUCTION SIGNS SHALL BE FABRICATED USING TYPES IV OR VIII FLUORESCENT ORANGE REFLECTIVE SHEETING MATERIAL FOR THE SIGN BACKGROUND.
711. DURING NON-WORKING HOURS NO EQUIPMENT OR MATERIAL SHALL BE PARKED OR STORED CLOSER THAN 30 FEET TO THE EDGE OF ANY ROADWAY CARRYING TRAFFIC. WHEN THIS IS NOT PRACTICAL, IT SHALL BE PLACED IN AN AREA APPROVED BY THE ENGINEER AND DELINEATED BY REFLECTORIZED DRUMS. THIS INCLUDES STORAGE OF TRAFFIC CONTROL DEVICES SUCH AS TRAILER MOUNTED OR OTHER TEMPORARY SIGNS, BARRICADES, DRUMS, ETC., WHICH ARE NOT IN USE DURING NON-WORKING HOURS. THESE ARE TO BE FURNISHED BY THE CONTRACTOR WITHOUT COST TO SHELBY COUNTY.

| REFERENCE PROJECT NO | FISCAL YEAR | SHEET NO |
|----------------------|-------------|----------|
| SCP 59-969-25 (EAST) | 2025 | 2J |

TRAFFIC CONTROL NOTES
PROJECT NO. SCP 59-969-25 (EAST)
SHELBY COUNTY

- 712: WHERE THE LOCATION OF A REQUIRED SIGN FALLS IN A DRIVEWAY, SIDEWALK, BRIDGE, ETC., OR WHERE THE VISIBILITY OF A SIGN IS LIMITED TO THE TRAVELING PUBLIC, THE LOCATION SHALL BE ADJUSTED AS DIRECTED BY THE ENGINEER.
- 713: THE CONTRACTOR SHALL PLACE ALL ADVANCE WARNING SIGNS BEFORE PROCEEDING WITH THIS WORK.
- 714: ALL VEHICLES, EQUIPMENT, PERSONNEL (EXCEPT FLAGGERS), AND THEIR ACTIVITIES, ARE RESTRICTED AT ALL TIMES TO ONE SIDE OF THE PAVEMENT UNLESS OTHERWISE AUTHORIZED BY THE ENGINEER.
- 715: CONTRACTOR SHALL MAINTAIN AT LEAST ONE ACCESS TO BUSINESSES AND RESIDENCES DURING ALL PHASES OF CONSTRUCTION.
- 716: CONSTRUCTION SIGNS MOUNTED ON TEMPORARY SUPPORTS SHALL BE MOUNTED AT A MINIMUM HEIGHT OF 5 FEET.
- 717: FLAGGERS SHALL BE PROPERLY ATTIRED, EQUIPPED WITH STAFF MOUNTED STOP/SLOW PADDLES IN SIGHT OF EACH OTHER OR HAVE DIRECT COCOMMUNICATION AT ALL TIMES. FLAGGER STATION LOCATION MAY BE VARIED FROM THOSE SHOWN BASED ON ROADWAY CONDITIONS AT THE TIME OF THE LANE CLOSURE.
- 718: FLAGGERS ARE TO BE USED WHEN DIRECTED BY THE ENGINEER. SIGNS SHALL BE PLACED AT THE APPROPRIATE TIME AND SHALL BE COVERED OR REMOVED WHEN FLAGGERS ARE NOT ON DUTY AND DURING NON-WORKING HOURS.
- 719: FOR MOVING OPERATIONS, THE TRAFFIC CONES MAY BE DELETED IF THE FLAGGERS ARE IN SIGHT OF EACH OTHER OR IF A PILOT CAR IS USED ON A TWO LANE ROADWAY.
- 720: DURING THE WIDENING OR RESURFACING OF ANY ROADWAY CARRYING TRAFFIC, THE CONTRACTOR SHALL ADVISE THE MOTORISTS OF ANY EDGE OF PAVEMENT DROP-OFFS 3 INCHES OF GREATER BY PLACING SHOULDER DROP-OFF SIGNS EVERY 1/2 MILE BEGINNING PRIOR TO THE WIDENING OR RESURFACING. REQUIRED SHOULDER WORK TO ELIMINATE THE DROP-OFFS SHALL BE PURSUED IN AN EXPEDITIOUS MANNER FOLLOWING THE WIDENING AND OR RESURFACING.
- 721: DURING THE WIDENING OR RESURFACING OF ANY ROADWAY CARRYING TRAFFIC, THE CONSTRUCTION ZONE SHALL NOT BE LONGER THAN 2 MILES AT ANY GIVEN TIME.

| SUMMARY OF QUANTITIES | | | | | Reference Project No | Fiscal Year | Sheet No |
|-----------------------|----------|----------|--|--|----------------------|-------------|----------|
| SCP 59-969-25 (East) | | | | | SCP 59-969-25 (East) | 2025 | 3 |
| Pay Item | Unit | Quantity | Description | | | | |
| 401B-111 | Sq. Yd. | 204,169 | Bituminous Treatment "G", CRS-2 (With Polymer Additive) | | | | |
| 405A-000 | Gal | 2,400 | Tack Coat | | | | |
| 410H-000 | Each | 4 | Material Remixing Device | | | | |
| 424A-340 | Ton | 5,030 | Bituminous Concrete Wearing Surface Layer, 1/2" Max Agg., ESAL A/B | | | | |
| 424A-361 | Ton | 13,831 | Bituminous Concrete Wearing Surface Layer, 3/4" Max Agg., ESAL C/D | | | | |
| 424A-370 | Ton | 425 | Bituminous Concrete Wearing Surface Layer, Widening, 3/4" Max Agg., ESAL C/D | | | | |
| 424B-656 | Ton | 3,460 | Bituminous Concrete Upper Binder Layer, Patching, 1 1/2" Max Agg., ESAL C/D | | | | |
| 424B-658 | Ton | 925 | Bituminous Concrete Upper Binder Layer, Leveling, 3/4" Max Agg., ESAL C/D | | | | |
| 701A-007 | Mile | 20 | Solid White, Class 1, Type A Traffic Stripe (5" Wide) | | | | |
| 701A-011 | Mile | 4 | Broken Yellow, Class 1, Type A Traffic Stripe (5" Wide) | | | | |
| 701A-016 | Mile | 16 | Solid Yellow, Class 1, Type A Traffic Stripe (5" Wide) | | | | |
| 701A-227 | Mile | 8 | Solid White, Class 2, Type A Traffic Stripe (5" Wide) | | | | |
| 701A-230 | Mile | 8 | Solid Yellow, Class 2, Type A Traffic Stripe (5" Wide) | | | | |
| 701A-244 | Mile | 1 | Broken Yellow, Class 2, Type A Traffic Stripe (5" Wide) | | | | |
| 701B-207 | Lin. Ft. | 70 | Dotted, Class 2, Type A Traffic Stripe (5" Wide) | | | | |
| 701C-002 | Mile | 9 | Broken Temporary Traffic Stripe (Paint) | | | | |
| 701C-003 | Mile | 47 | Solid Temporary Traffic Stripe (Paint) | | | | |
| 701G-146 | Lin. Ft. | 110 | Solid White, Class W, Type A Traffic Stripe (5" Wide) | | | | |
| 701G-154 | Lin. Ft. | 110 | Solid Yellow, Class W, Type A Traffic Stripe (5" Wide) | | | | |
| 701H-002 | Lin. Ft. | 220 | Solid Traffic Stripe Removed (Tape) | | | | |
| 703A-002 | Sq. Ft. | 955 | Traffic Control Markings, Class 2, Type A | | | | |
| 703B-002 | Sq. Ft. | 68 | Traffic Control Legends, Class 2, Type A | | | | |
| 703D-002 | Sq. Ft. | 1,282 | Temp. Traffic Control Markings (Paint) | | | | |
| 705A-037 | Each | 1,819 | Pavement Markers, Class A-H, Type 2-D | | | | |

| SUMMARY OF QUANTITIES | | | | | | | | | |
|------------------------------|------------------------------------|--|-----------|--------------------------|---|---|--|---|---|
| Required Asphalt Resurfacing | | | | | | | | | |
| Unit # | Road # or Name | 401B-111 | 405A-000 | 410H-000 | 424A-340 | 424A-361 | 424A-370 | 424B-656 | 424B-658 |
| | | Bituminous Treatment Type "G", CRS-2 (With Polymer Additive) | Tack Coat | Material Remixing Device | Bituminous Wearing Surface 1/2" Max Agg, ESAL A/B | Bituminous Wearing Surface 3/4" Max Agg, ESAL C/D | Bituminous Wearing Surface (Widening) 3/4" Max Agg, ESAL C/D | Bituminous Upper Binder Layer (Patching) 1 1/2" Max Agg, ESAL C/D | Bituminous Upper Binder Layer (Leveling) 3/4" Max Agg, ESAL C/D |
| | | SqYd | Gal | Each | Ton | Ton | Ton | Ton | Ton |
| #1E | CR-36 | 10,502 | 300 | 1 | | 972 | 200 | 400 | 100 |
| #2E | CR-39 | 33,690 | 250 | 1 | | 3,117 | 75 | 250 | 150 |
| #3E | CR-55 | 54,065 | 500 | 1 | | 5,002 | 50 | 925 | 150 |
| #4E | CR-43 | 41,536 | 250 | 1 | | 3,843 | 100 | 200 | 50 |
| #5E | CR-450 (Rock School Road) | 7,876 | 100 | | | 650 | | 250 | 25 |
| #6E | CR-336 | 1,307 | 20 | | 108 | | | 25 | 25 |
| #7E | Nichols Road | 2,498 | 20 | | 250 | | | | |
| #8E | Shaw Drive | 2,175 | | | 180 | | | | |
| #9E | Shaw Valley Road | 2,107 | | | 174 | | | | |
| #10E | Dogwood Drive | 3,225 | 30 | | 323 | | | 25 | |
| #11E | Weatherton Trail & Weatherton Road | 4,610 | 100 | | 381 | | | 350 | 50 |
| #12E | Stillmeadow Subdivision | 9,775 | 200 | | 807 | | | 325 | 200 |
| #13E | Shadow Oaks Subdivision | 12,778 | 50 | | 1,054 | | | 600 | 100 |
| #14E | Hidden Ridge Subdivision | 15,038 | 100 | | 1,391 | | | 100 | 25 |
| #15E | Howard Branch Road | 587 | 20 | | | 49 | | 10 | |
| #16E | Davis Road | 2,400 | 20 | | | 198 | | | 50 |
| #17E | Hidden Meadows Lane | | 440 | | 362 | | | | |
| | Totals: | 204,169 | 2,400 | 4 | 5,030 | 13,831 | 425 | 3,460 | 925 |

| SUMMARY OF QUANTITIES | | | | | | | | | | | |
|---|--------------------------------------|---|---|--|---|--|---|---|---|--|--|
| Required Temporary and Permanent Traffic Stripe | | | | | | | | | | | |
| Unit # | Road # or Name | 701A-007 | 701A-011 | 701A-016 | 701A-227 | 701A-230 | 701A-244 | 701B-207 | 701C-002 | | |
| | | Solid White, Class 1, Type A Traffic Stripe (5" Wide) | Broken Yellow, Class 1, Type A Traffic Stripe (5" Wide) | Solid Yellow, Class 1, Type A Traffic Stripe (5" Wide) | Solid White, Class 2, Type A Traffic Stripe (5" Wide) | Solid Yellow, Class 2, Type A Traffic Stripe (5" Wide) | Broken Yellow, Class 2, Type A Traffic Stripe (5" Wide) | Dotted Class 2, Type A Traffic Stripe (5" Wide) | Broken Temporary Traffic Stripe (Paint) | | |
| | | Mile | Mile | Mile | Mile | Mile | Mile | Lin Ft | Mile | | |
| #1E | CR-36 | | | | 2 | 2 | 1 | | 1 | | |
| #2E | CR-39 | | | | 6 | 6 | | 70 | | | |
| #3E | CR-55 | 10 | | 10 | | | | | | | |
| #4E | CR-43 | 8 | 4 | 4 | | | | | 8 | | |
| #5E | CR-450 (Rock School Road) | 2 | | 2 | | | | | | | |
| #6E | CR-336 | | | | | | | | | | |
| #7E | Nichols Road | | | | | | | | | | |
| #8E | Shaw Drive | | | | | | | | | | |
| #9E | Shaw Valley Road | | | | | | | | | | |
| #10E | Dogwood Drive | | | | | | | | | | |
| #11E | Weatherston Trail & Weatherston Road | | | | | | | | | | |
| #12E | Stillmeadow Subdivision | | | | | | | | | | |
| #13E | Shadow Oaks Subdivision | | | | | | | | | | |
| #14E | Hidden Ridge Subdivision | | | | | | | | | | |
| #15E | Howard Branch Road | | | | | | | | | | |
| #16E | Davis Road | | | | | | | | | | |
| #17E | Hidden Meadows Lane | | | | | | | | | | |
| | Totals: | 20 | 4 | 16 | 8 | 8 | 1 | 70 | 9 | | |

Reference Project No
SCP 59-969-25 (East)

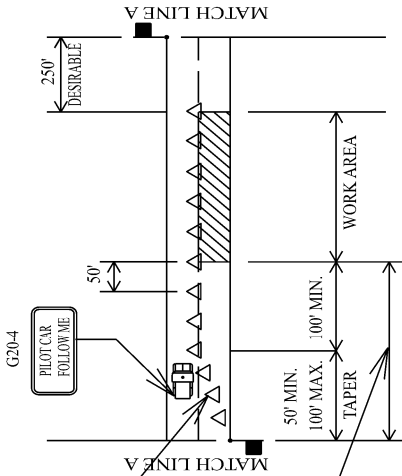
Fiscal Year
2025

Sheet No
3B

| SUMMARY OF QUANTITIES | | | | | | | | | | | |
|--|------------------------------------|--|---|--|-------------------------------------|---|--|--|---------------------------------------|--|--|
| Required Class W Stripe, Traffic Control Markings and Pavement Markers | | | | | | | | | | | |
| | | 701C-003 | 701G-146 | 701G-154 | 701H-002 | 703A-002 | 703B-002 | 703D-002 | 705A-037 | | |
| Unit # | Road # or Name | Solid Temporary Traffic Stripe (Paint) | Solid White, Class W, Type A Traffic Stripe (5" Wide) | Solid Yellow, Class W, Type A Traffic Stripe (5" Wide) | Solid Traffic Stripe Removed (Tape) | Traffic Control Markings, Class 2, Type A | Traffic Control Legends, Class 2, Type A | Temporary Traffic Control Markings (Paint) | Pavement Markers, Class A-H, Type 2-D | | |
| | | Mile | Lin Ft | Lin Ft | Lin Ft | Sq Ft | Sq Ft | Sq Ft | Each | | |
| #1E | CR-36 | 4 | | | | 278 | 45 | 278 | 308 | | |
| #2E | CR-39 | 11 | | | | 57 | 23 | 114 | 345 | | |
| #3E | CR-55 | 19 | 110 | 110 | 220 | 120 | | 240 | 609 | | |
| #4E | CR-43 | 10 | | | | 150 | | 300 | 468 | | |
| #5E | CR-450 (Rock School Road) | 3 | | | | | | | 89 | | |
| #6E | CR-336 | | | | | | | | | | |
| #7E | Nichols Road | | | | | | | | | | |
| #8E | Shaw Drive | | | | | | | | | | |
| #9E | Shaw Valley Road | | | | | | | | | | |
| #10E | Dogwood Drive | | | | | | | | | | |
| #11E | Weatherton Trail & Weatherton Road | | | | | | | | | | |
| #12E | Stillmeadow Subdivision | | | | | 88 | | 88 | | | |
| #13E | Shadow Oaks Subdivision | | | | | 150 | | 150 | | | |
| #14E | Hidden Ridge Subdivision | | | | | 64 | | 64 | | | |
| #15E | Howard Branch Road | | | | | 24 | | 24 | | | |
| #16E | Davis Road | | | | | 24 | | 24 | | | |
| #17E | Hidden Meadows Lane | | | | | | | | | | |
| | Totals: | 47 | 110 | 110 | 220 | 955 | 68 | 1,282 | 1,819 | | |

TRAFFIC CONTROL PLAN SHEET

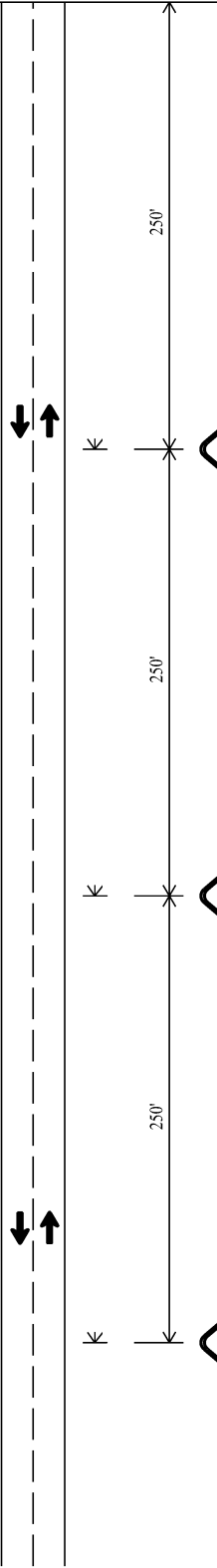
TWO LANE HIGHWAY, ONE LANE CLOSURE



TAPER SHALL BE FORMED BY PLACING ONE CONE PER FOOT OF LANE WIDTH.

SEE TABLE 6E-1 OF THE MUTCD PART 6 FOR DISTANCE OF FLAGGER STATION IN ADVANCE OF WORK SPACE

MATCH LINE A

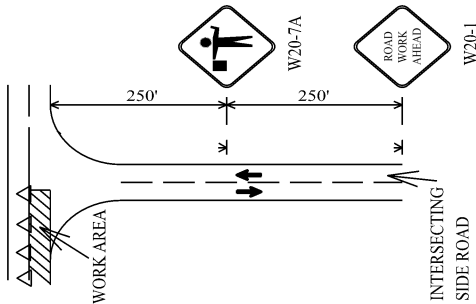


| REQUIRED SIGN SIZES | |
|---------------------|-----------|
| W20-1 | 48" X 48" |
| W20-4 | 48" X 48" |
| W20-7 | 48" X 48" |
| G20-4 | 36" X 18" |

- LEGEND
- TEMPORARY MOUNTED SIGN
 - POST MOUNTED SIGN
 - CONE WITH BALAST
 - FLAGGER

TRAFFIC CONTROL FOR INTERSECTING SIDE ROADS WITHIN WORK AREA

NOTE: THE W20-1 AND W20-7A SIGNS TO BE USED ON INTERSECTING ROADS SHALL BE 36"X36" IN SIZE. THE TEMPORARY WORK AHEAD SIGN SHOWN ON THE SIDE ROAD WILL NOT BE REQUIRED IF ONE IS ALREADY POST MOUNTED ON THE SIDE STREET.



DESIGN BUREAU SPECIAL DRAWING
DETAILS FOR TRAFFIC CONTROL FOR
RESURFACING TWO LANE HIGHWAYS

| | | |
|--------------------------|------------------------|---------|
| DRAWN BY: DATE DRAWN: | SPECIAL PROJECT DETAIL | |
| | SHEET TITLE | ROUTE |
| NOT TO SCALE | | VARIOUS |

TEMPORARY TRAFFIC CONTROL PLAN SHEET

