

STATE	REFERENCE PROJECT NO	FISCAL YEAR	SHEET NO	LAST SHEET NO
AL	SCP 59-969-25 (WEST)	2025	1	5

# SHELBY COUNTY HIGHWAY DEPARTMENT

## PLANS OF PROPOSED PROJECT SCP 59-969-25 (WEST)

REPAIR, RESURFACING & TRAFFIC STRIPE FOR VARIOUS COUNTY ROADS  
IN WEST SHELBY COUNTY, AL



PROJECT LOCATION

STATE LOCATOR



★  
COLUMBIANA



COUNTY ENGINEER  
DAVID WILLINGHAM, P.E.

### COUNTY COMMISSIONERS

DISTRICT #1  
KEVIN MORRIS

DISTRICT #2  
TOMMY EDWARDS

DISTRICT #3  
JON PARKER

DISTRICT #4  
WARD WILLIAMS

DISTRICT #5  
ELWYN BEARDEN

DISTRICT #6  
JOSH SISK

DISTRICT #7  
LINDSEY ALLISON

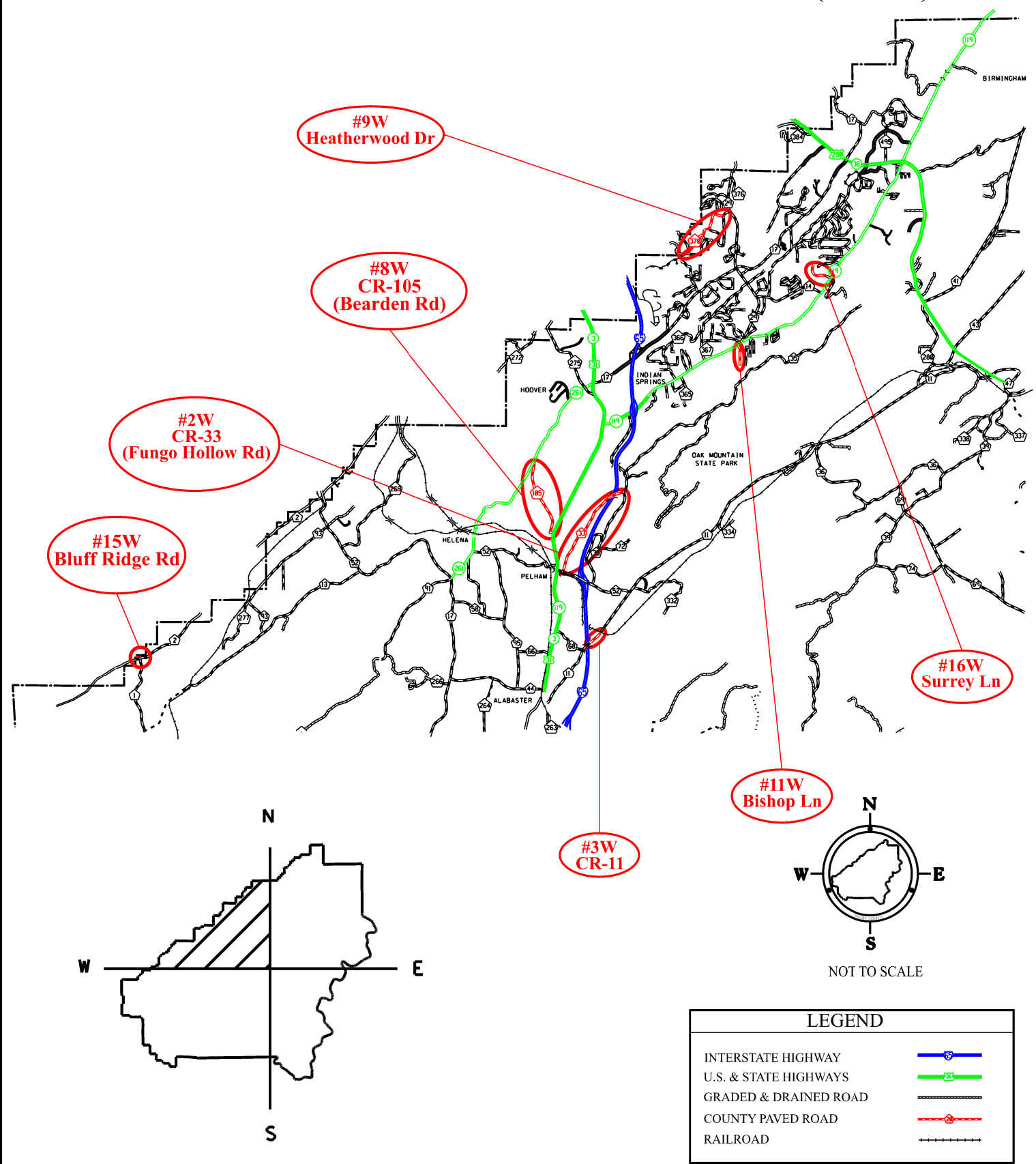
DISTRICT #8  
RICK SHEPHERD

DISTRICT #9  
DR. ROBBIE HAYES

NOTE : THESE PLANS HAVE BEEN PREPARED TO  
CONFORM WITH ALABAMA DEPARTMENT  
OF TRANSPORTATION STANDARD  
SPECIFICATIONS DATED 2022.

REFERENCE PROJECT NO	FISCAL YEAR	SHEET NO
SCP 59-969-25 (WEST)	2025	1A

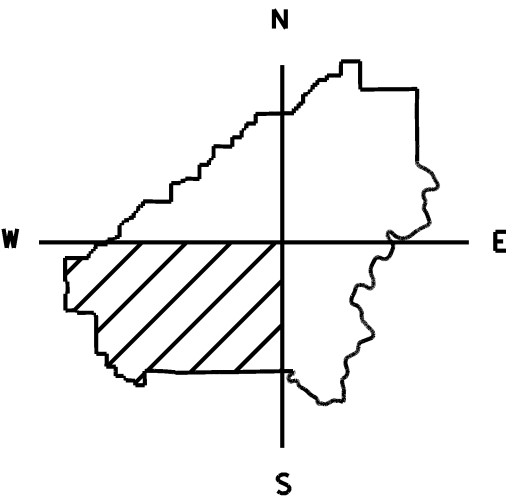
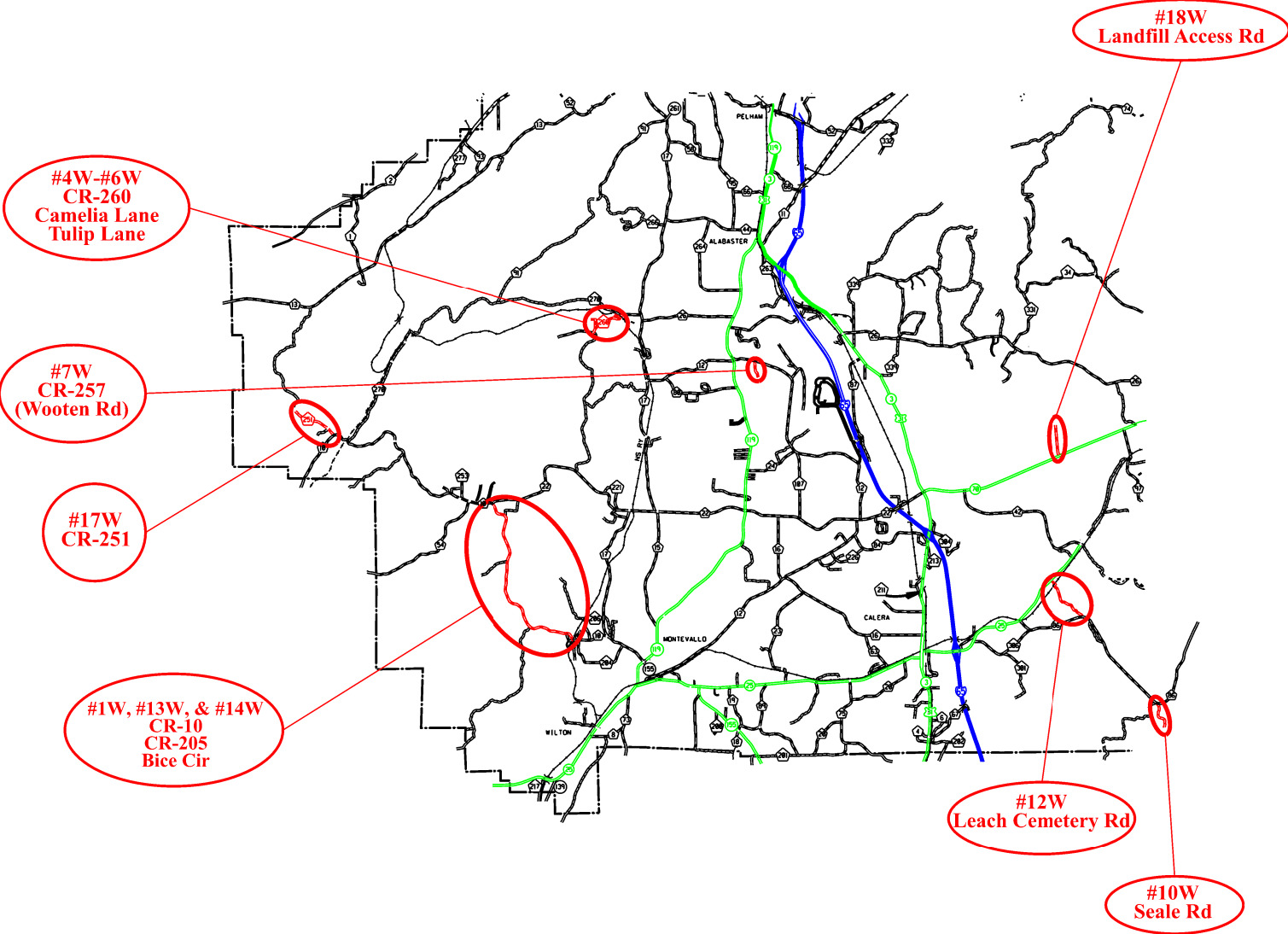
PROJECT LOCATIONS  
PLANS OF PROPOSED PROJECT SCP 59-969-25 (WEST)



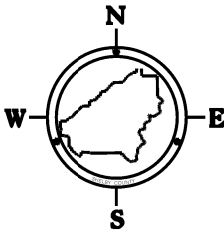
COUNTY LOCATOR

REFERENCE PROJECT NO	FISCAL YEAR	SHEET NO
SCP 59-969-25 (WEST)	2025	1B

# PROJECT LOCATIONS PLANS OF PROPOSED PROJECT SCP 59-969-25 (WEST)



COUNTY LOCATOR



LEGEND	
INTERSTATE HIGHWAY	
U.S. & STATE HIGHWAYS	
GRADED & DRAINED ROAD	
COUNTY PAVED ROAD	
RAILROAD	

REFERENCE PROJECT NO	FISCAL YEAR	SHEET NO
SCP 59-969-25 (WEST)	2025	1C

**INDEX TO SHEETS**  
**PROJECT NO. SCP 59-969-25 (WEST)**  
**SHELBY COUNTY**

SHEET NO. 1	TITLE SHEET
SHEET NO. 1A-1B	PROJECT LOCATIONS
SHEET NO. 1C	INDEX TO SHEETS
SHEET NO. 2-2J	TYPICAL SECTIONS
SHEET NO. 2K	UNIT DESCRIPTIONS
SHEET NO. 2L-2M	PROJECT NOTES
SHEET NO. 2N-2-O	TRAFFIC CONTROL NOTES
SHEET NO. 3	SUMMARY OF QUANTITIES
SHEET NO. 3A-3C	SUMMARY OF QUANTITIES PER UNIT
SHEET NO. 3D-3G	TRAFFIC SIGNAL LOOP DETECTOR SHEETS
SHEET NO. 4-5	TRAFFIC CONTROL PLANS

THE FOLLOWING IS A LIST OF STANDARD OR SPECIAL DRAWINGS CONTAINED IN THE ALABAMA DEPARTMENT OF TRANSPORTATION SPECIAL AND STANDARD HIGHWAY DRAWINGS BOOKLET DATED 2025 WHICH APPLY TO THIS PROJECT:

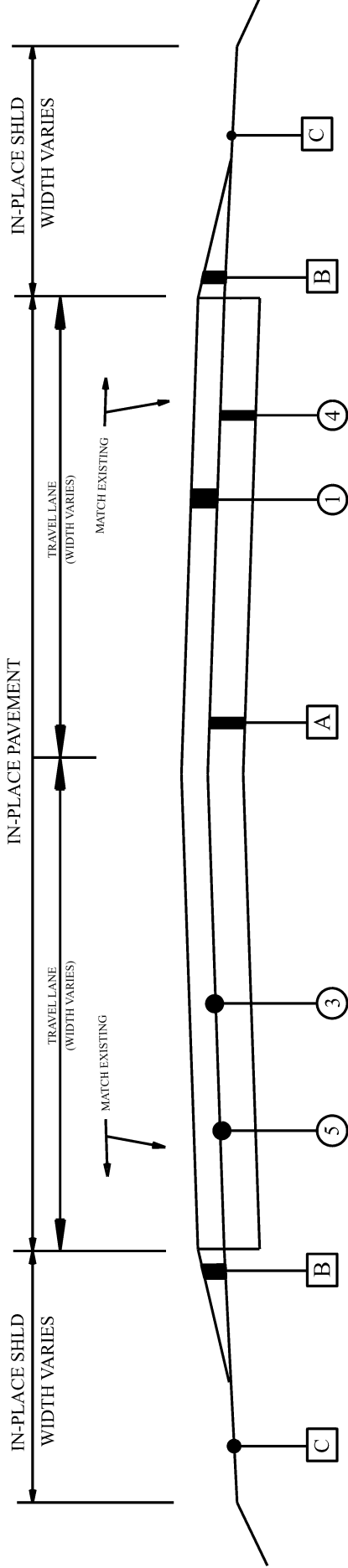
<u>INDEX NO.</u>	<u>DRAWING NO.</u>	<u>DESCRIPTION</u>
20901	MB-209-1	DETAILS OF MOUNTING MAILBOXES (SHEET 1 OF 3)
20902	MB-209-1	DETAILS OF MOUNTING MAILBOXES (SHEET 2 OF 3)
20903	MB-209-1	DETAILS OF MOUNTING MAILBOXES (SHEET 3 OF 3)
68004	TO-107	DETAILS OF INTERSECTION AND TURNOUTS
68019	SSEC-1	STANDARD SUPERELEVATION OF CURVES (SHEET 4 OF 14)
70101	PS-701-6	DETAILS OF TRAFFIC STRIPING FOR TWO LANE HIGHWAYS
70104	197-NPL	DETAILS OF NO PASSING LINES FOR TWO LANE, TWO DIRECTION ROADWAY
70301	TCM-703	PAVEMENT LEGENDS & MARKINGS (SHEET 1 OF 2)
70302	TCM-703	PAVEMENT LEGENDS & MARKINGS (SHEET 2 OF 2)
70308	CW-703	TYPICAL CROSSWALK LAYOUTS AND DETAILS
70311	SC-703	TYPICAL SCHOOL ZONE CROSSING PROTECTION SIGNING AND MARKINGS
70501	PM-705-1	DETAILS OF PAVEMENT MARKERS CLASS A, A-H & B
70504	PM-705-2	DETAILS SHOWING APPLICATION OF PAVEMENT MARKERS
71017	IHS-710-12	DETAILS OF ROADWAY SIGN POST (SMALL CHANNEL AND TUBULAR SECTION)
71032	IHS-710-21	DETAILS FOR LOCATION AND MOUNTING STANDARD FLAT PANEL SIGNS ON U-CHANNEL AND TUBULAR POSTS
71069	SHS-10	STANDARD HIGHWAY SIGNS
71090	SHS-26	STANDARD HIGHWAY SIGNS
71091	SHS-27	STANDARD HIGHWAY SIGNS
71092	SHS-28	STANDARD HIGHWAY SIGNS
71093	SHS-29	STANDARD HIGHWAY SIGNS
71094	SHS-30	STANDARD HIGHWAY SIGNS
71095	SHS-31	STANDARD HIGHWAY SIGNS
73030	T.S.D.-730-11	LOOP WIRE INSTALLATION
73501	RRX-107-1	RAILROAD CROSSING PASSIVE WARNING - SIGNS AND PAVEMENT MARKINGS
73504	RRX-107-2	RAILROAD CROSSING ACTIVE WARNING - SIGNS AND PAVEMENT MARKINGS
73507	RRX-107-3	DIMENSIONS FOR RAILROAD CROSSING SIGNS, SIGNALS, AND MARKINGS
74007	TCD-100	DETAILS FOR TRAFFIC CHANNELIZATION DEVICES
74201	PCMS-710	DETAILS OF PORTABLE CHANGEABLE MESSAGE SIGNS (SHEET 1 OF 3)
74202	PCMS-710	DETAILS OF PORTABLE CHANGEABLE MESSAGE SIGNS (SHEET 2 OF 3)
74203	PCMS-710	DETAILS OF PORTABLE CHANGEABLE MESSAGE SIGNS (SHEET 3 OF 3)

PROJECT NOTES: 201,202,203,204,205,206,  
207,213,214,215,216,218,  
219,221,222,223

TYPICAL SECTION  
PROJECT NO. SCP 59-969-25 (WEST)  
SHELBY COUNTY

PROJECT NUMBER	FISCAL YEAR	SHEET NO.	LAST SHEET
SCP 59-969-25 (WEST)	2025	2	5

TYPICAL SECTION APPLIES TO UNITS: 1W (CR-10), 4W (CR-260), 5W (CAMELIA LN),  
6W (TULIP LN), 7W (CR-257), 10W (SEALE RD), 13W (CR-205), 14W (BICE CIR), &  
15W (BLUFF RIDGE RD)



LEGEND

ITEM UNIT DESCRIPTION

①	424A-361	TON	REQ'D SUPERPAVE BITUMINOUS CONCRETE WEARING SURFACE LAYER, 3/4" MAXIMUM AGGREGATE SIZE MIX, ESAL RANGE C/D (165-200 LBS/SY; REFER TO SHEET 2K FOR RATES)
③	401B-111	SQ YD	REQ'D BITUMINOUS TREATMENT G, CRS-2 (WITH POLYMER ADDITIVE)
④	424B-656	TON	REQ'D SUPERPAVE BITUMINOUS CONCRETE UPPER BINDER LAYER, PATCHING, 1 1/2" MAXIMUM AGGREGATE SIZE MIX, ESAL RANGE C/D (440 LBS/SY OR AS DIRECTED BY ENGINEER)
⑤	424B-658	TON	REQ'D SUPERPAVE BITUMINOUS CONCRETE UPPER BINDER LAYER, LEVELING, 3/4" MAXIMUM AGGREGATE SIZE MIX, ESAL RANGE C/D (THICKNESS VARIES AS DIRECTED BY ENGINEER)
A			IN-PLACE PAVEMENT (RETAIN & OVERLAY)
B			CONTRACTOR SHALL BE RESPONSIBLE FOR TEMPORARY DROP-OFFS; PERMANENT SHOULDER WORK TO BE PERFORMED BY SHELBY COUNTY (REFER TO SHEET 5)
C			IN-PLACE SHOULDER (RETAIN)

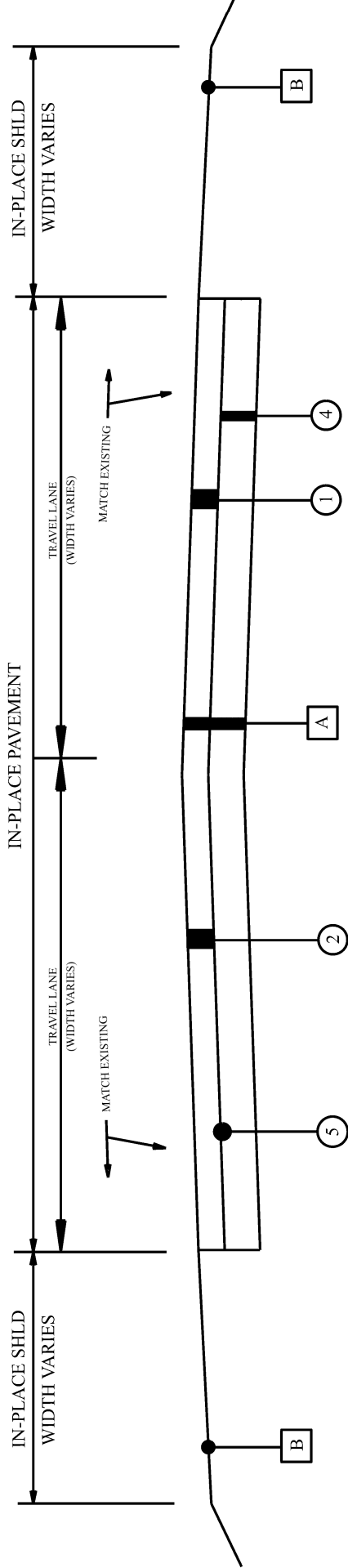
NOT TO SCALE

PROJECT NOTES: 201,202,204,205,206,207  
213,214,215,216,218,219  
221,222,223,227,229

TYPICAL SECTION  
PROJECT NO. SCP 59-969-25 (WEST)  
SHELBY COUNTY

PROJECT NUMBER	FISCAL YEAR	SHEET NO.	LAST SHEET
SCP 59-969-25 (WEST)	2025	2A	5

TYPICAL SECTION APPLIES TO UNITS: 2W (CR-33) & 3W (CR-11)



LEGEND

ITEM	UNIT	DESCRIPTION
① 424A-361	TON	REQ'D SUPERPAVE BITUMINOUS CONCRETE WEARING SURFACE LAYER, 3/4" MAXIMUM AGGREGATE SIZE MIX, ESAL RANGE C/D (185 LBS/SY)
② 408A-052	SQ YD	REQ'D PLANING EXISTING PAVEMENT (APPROXIMATELY 1.10" THRU 2.0" THICK) (PLANE APPROXIMATELY 1.5") (FULL WIDTH OF STREETS)
④ 424B-656	TON	REQ'D SUPERPAVE BITUMINOUS CONCRETE UPPER BINDER LAYER, PATCHING, 1 1/2" MAXIMUM AGGREGATE SIZE MIX, ESAL RANGE C/D (440 LBS/SY OR AS DIRECTED BY THE ENGINEER)
⑤ 424B-658	TON	REQ'D SUPERPAVE BITUMINOUS CONCRETE UPPER BINDER LAYER, LEVELING, 3/4" MAXIMUM AGGREGATE SIZE MIX, ESAL RANGE C/D (THICKNESS VARIES AS DIRECTED BY THE ENGINEER)
A		IN-PLACE PAVEMENT (PLANE, RETAIN, & OVERLAY)
B		IN-PLACE SHOULDER (RETAIN)

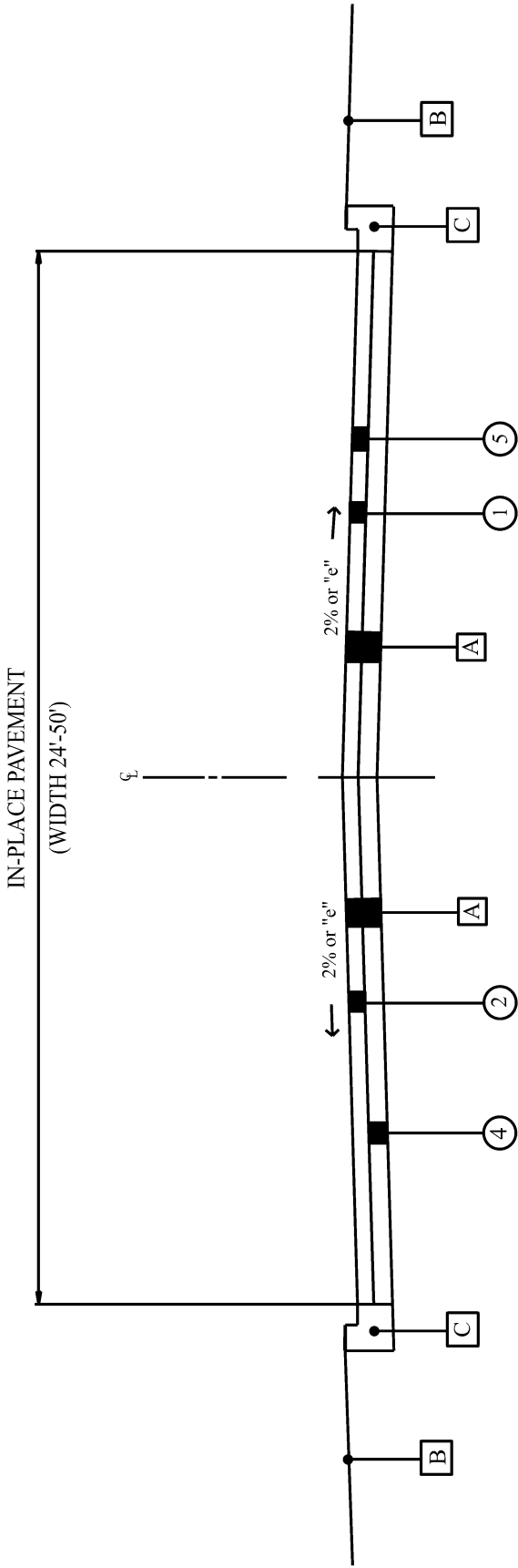
NOT TO SCALE

PROJECT NOTES: 201,202,204,205,206,207,213,  
215,216,218,219,221,222,223

TYPICAL SECTION  
PROJECT NO. SCP 59-969-25 (WEST)  
SHELBY COUNTY

PROJECT NUMBER	FISCAL YEAR	SHEET NO.	LAST SHEET
SCP 59-969-25 (WEST)	2025	2B	5

TYPICAL SECTION APPLIES TO UNIT 8W (CR-105; BEARDEN RD)



LEGEND

ITEM	UNIT	DESCRIPTION
① 424A-361	TON	REQ'D SUPERPAVE BITUMINOUS CONCRETE WEARING SURFACE LAYER, 3/4" MAXIMUM AGGREGATE SIZE MIX, ESAL RANGE C/D (185 LBS/SY)
② 408A-052	SQ YD	REQ'D PLANING EXISTING PAVEMENT (APPROXIMATELY 1.10" THRU 2.0" THICK) (PLANE APPROXIMATELY 1.5") (FULL WIDTH OF STREETS)
④ 424B-656	TON	REQ'D SUPERPAVE BITUMINOUS CONCRETE UPPER BINDER LAYER, PATCHING, 1½" MAXIMUM AGGREGATE SIZE MIX, ESAL RANGE C/D (440 LBS/SY OR AS DIRECTED BY ENGINEER)
⑤ 424B-658	TON	REQ'D SUPERPAVE BITUMINOUS CONCRETE UPPER BINDER LAYER, LEVELING, 3/4" MAXIMUM AGGREGATE SIZE MIX, ESAL RANGE C/D (THICKNESS VARIES AS DIRECTED BY THE ENGINEER)
A		IN PLACE PAVEMENT (PLANE, RETAIN, & OVERLAY)
B		IN PLACE SHOULDER (RETAIN)
C		IN PLACE CURB AND GUTTER (RETAIN)

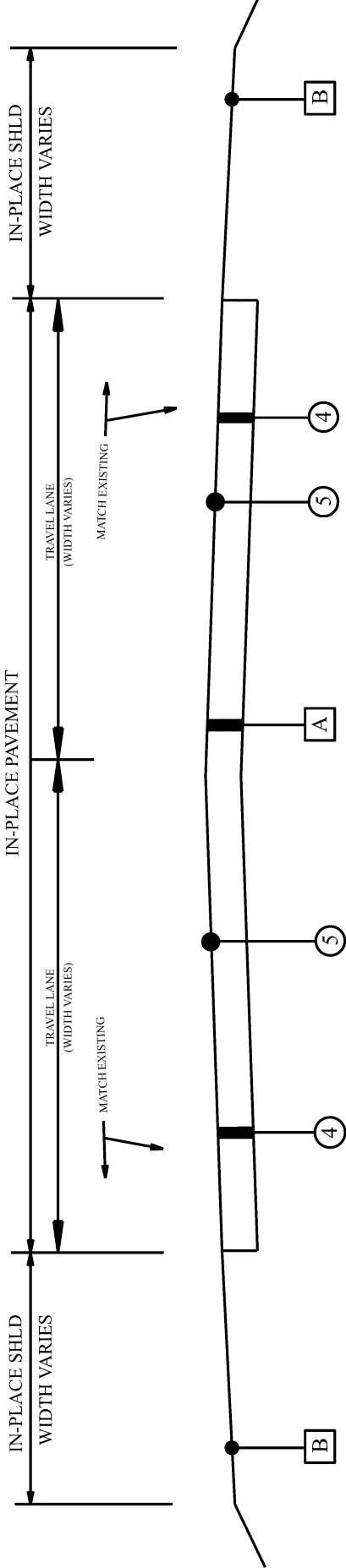
NOT TO SCALE

PROJECT NOTES: 201,202,203,204,205,206,  
207,213,215,216,218,219,  
221,222,223,224

TYPICAL SECTION  
PROJECT NO. SCP 59-969-25 (WEST)  
SHELBY COUNTY

PROJECT NUMBER	FISCAL YEAR	SHEET NO.	LAST SHEET
SCP 59-969-25 (WEST)	2025	2C	5

TYPICAL SECTION APPLIES TO UNIT 9W (HEATHERWOOD DRIVE)



LEGEND

ITEM UNIT

DESCRIPTION

④	424B-656	TON	REQ'D SUPERPAVE BITUMINOUS CONCRETE UPPER BINDER LAYER, PATCHING, 1 1/2" MAXIMUM AGGREGATE SIZE MIX, ESAL RANGE C/D (440 LBS/SY OR AS DIRECTED BY THE ENGINEER)
⑤	424B-658	TON	REQ'D SUPERPAVE BITUMINOUS CONCRETE UPPER BINDER LAYER, LEVELING, 3/4" MAXIMUM AGGREGATE SIZE MIX, ESAL RANGE C/D (THICKNESS VARIES AS DIRECTED BY THE ENGINEER)
A			IN-PLACE PAVEMENT (RETAIN)
B			IN-PLACE SHOULDER (RETAIN)

NOT TO SCALE



TYPICAL SECTION  
PROJECT NO. SCP 59-969-25 (WEST)  
SHELBY COUNTY

PROJECT NUMBER	FISCAL YEAR	SHEET NO.	LAST SHEET
SCP 59-969-25 (WEST)	2025	2D	5

[illegible]

## DESCRIPTION

ITEM	UNIT	DESCRIPTION
① 424A-361	TON	REQ'D SUPERPAVE BITUMINOUS CONCRETE WEARING SURFACE LAYER, 3/4" MAXIMUM AGGREGATE SIZE MIX, ESAL RANGE C/D (165 LBS/SY)
④ 424B-656	TON	REQ'D SUPERPAVE BITUMINOUS CONCRETE UPPER BINDER LAYER, PATCHING, 1 1/2" MAXIMUM AGGREGATE SIZE MIX, ESAL RANGE C/D (440 LBS/SY OR AS DIRECTED BY ENGINEER)
<div style="border: 1px solid black; padding: 2px; display: inline-block;">A</div>		IN-PLACE PAVEMENT (RETAIN & OVERLAY)
<div style="border: 1px solid black; padding: 2px; display: inline-block;">B</div>		CONTRACTOR SHALL BE RESPONSIBLE FOR TEMPORARY DROP-OFFS; PERMANENT SHOULDER WORK TO BE PERFORMED BY SHELBY COUNTY (REFER TO SHEET 5)
<div style="border: 1px solid black; padding: 2px; display: inline-block;">C</div>		IN-PLACE SHOULDER (RETAIN)

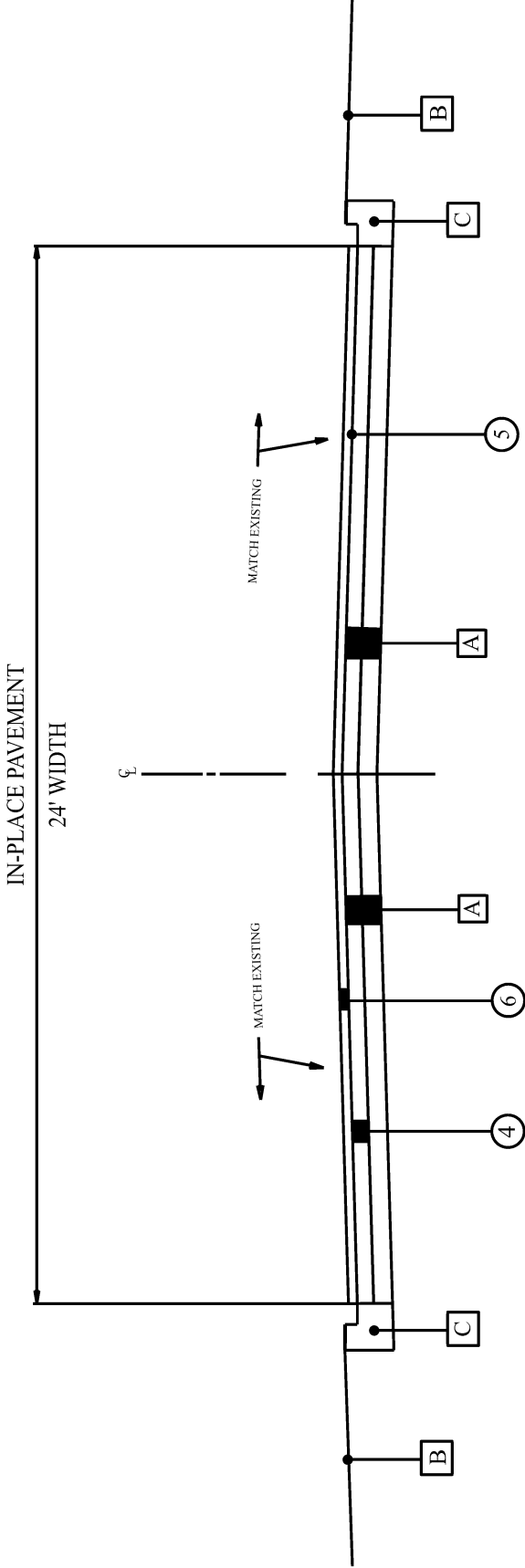
NOT TO SCALE

PROJECT NOTES: 201,202,204,205,206,207,213,  
215,216,218,219,221,222,223

TYPICAL SECTION  
PROJECT NO. SCP 59-969-25 (WEST)  
SHELBY COUNTY

PROJECT NUMBER	FISCAL YEAR	SHEET NO.	LAST SHEET
SCP 59-969-25 (WEST)	2025	2E	5

TYPICAL SECTION APPLIES TO UNIT 16W (SURREY LN)



LEGEND

DESCRIPTION

ITEM UNIT

- ④

424B-656

TON

REQ'D SUPERPAVE BITUMINOUS CONCRETE UPPER BINDER LAYER, PATCHING, 1½" MAXIMUM AGGREGATE SIZE MIX, ESAL RANGE C/D (440 LBS/SY OR AS DIRECTED BY ENGINEER)
- ⑤

424B-658

TON

REQ'D SUPERPAVE BITUMINOUS CONCRETE UPPER BINDER LAYER, LEVELING, ¾" MAXIMUM AGGREGATE SIZE MIX, ESAL RANGE C/D (THICKNESS VARIES AS DIRECTED BY THE ENGINEER)
- ⑥

424A-336

TON

REQ'D SUPERPAVE BITUMINOUS CONCRETE WEARING SURFACE LAYER, 3/8" MAXIMUM AGGREGATE SIZE MIX, ESAL RANGE A/B (90 LBS/SY)
- A

IN PLACE PAVEMENT (RETAIN & OVERLAY)
- B

IN PLACE SHOULDER (RETAIN)
- C

IN PLACE CURB AND GUTTER (RETAIN)

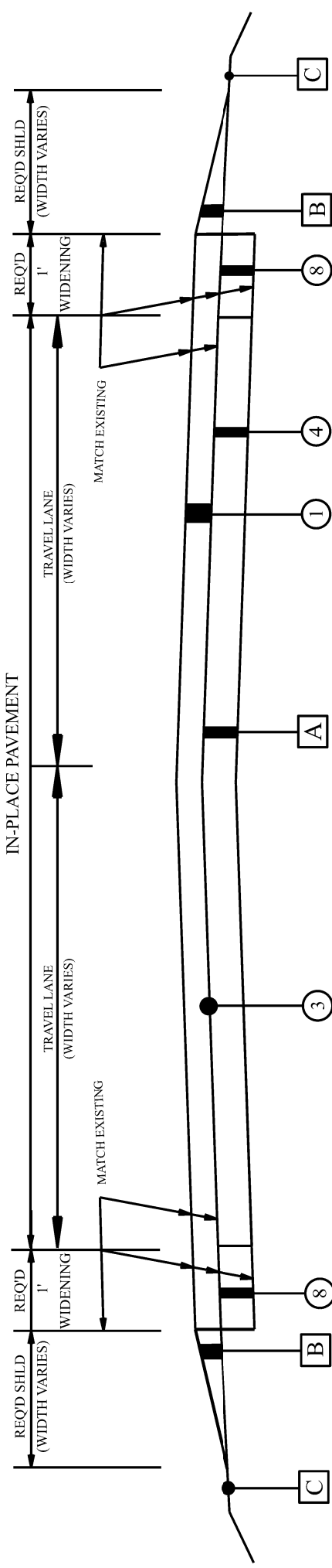
NOT TO SCALE

PROJECT NOTES: 201,202,204,205,206,207,213,  
215,216,218,219,221,222

TYPICAL SECTION  
PROJECT NO. SCP 59-969-25 (WEST)  
SHELBY COUNTY

PROJECT NUMBER	FISCAL YEAR	SHEET NO.	LAST SHEET
SCP 59-969-25 (WEST)	2025	2F	5

TYPICAL SECTION APPLIES TO UNIT 17W (CR-251)



LEGEND

DESCRIPTION

ITEM UNIT

- ① 424A-361 TON  
REQ'D SUPERPAVE BITUMINOUS CONCRETE WEARING SURFACE LAYER, 3/4"  
MAXIMUM AGGREGATE SIZE MIX, ESAL RANGE C/D (165 LBS/SY)
- ③ 401B-111 SQ YD  
REQ'D BITUMINOUS TREATMENT G, CRS-2 (WITH POLYMER ADDITIVE)
- ④ 424B-656 TON  
REQ'D SUPERPAVE BITUMINOUS CONCRETE UPPER BINDER LAYER, PATCHING, 1 1/2"  
MAXIMUM AGGREGATE SIZE MIX, ESAL RANGE C/D (440 LBS/SY)
- ⑧ 327D-021 TON  
PLANT MIX BITUMINOUS BASE, WIDENING, MIX 2 (440 LBS/SY)  
(MAY BE PLACED IN ONE LAYER)

IN-PLACE PAVEMENT (RETAIN, WIDEN, & OVERLAY)

SHOULDER WORK TO BE PERFORMED BY CONTRACTOR (MATERIAL REMOVED FOR WIDENING)

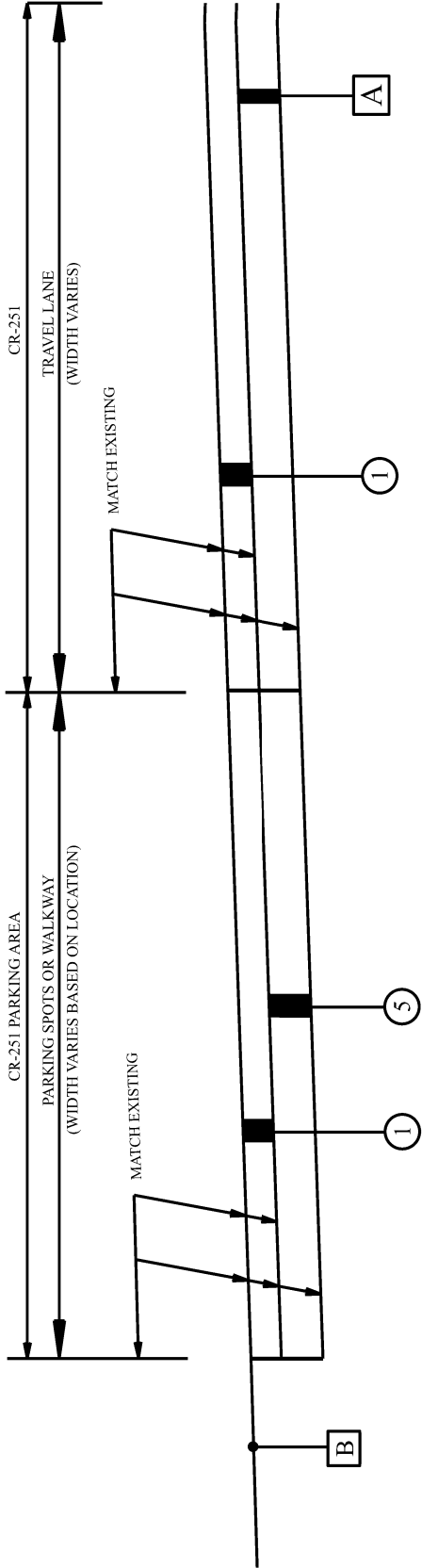
IN-PLACE SHOULDER (RETAIN)

NOT TO SCALE

TYPICAL SECTION  
PROJECT NO. SCP 59-969-25 (WEST)  
SHELBY COUNTY

PROJECT NUMBER	FISCAL YEAR	SHEET NO.	LAST SHEET
SCP 59-969-25 (WEST)	2025	2G	5

TYPICAL SECTION APPLIES TO UNIT 17W (CR-251) PARKING AREA



LEGEND

DESCRIPTION

ITEM UNIT

- ① 424A-361 TON REQ'D SUPERPAVE BITUMINOUS CONCRETE WEARING SURFACE LAYER, 3/4" MAXIMUM AGGREGATE SIZE MIX, ESAL RANGE C/D (165 LBS/SY)
- ⑤ 424B-658 TON REQ'D SUPERPAVE BITUMINOUS CONCRETE UPPER BINDER LAYER, 3/4" MAXIMUM AGGREGATE SIZE MIX, ESAL RANGE C/D (275 LBS/SY)

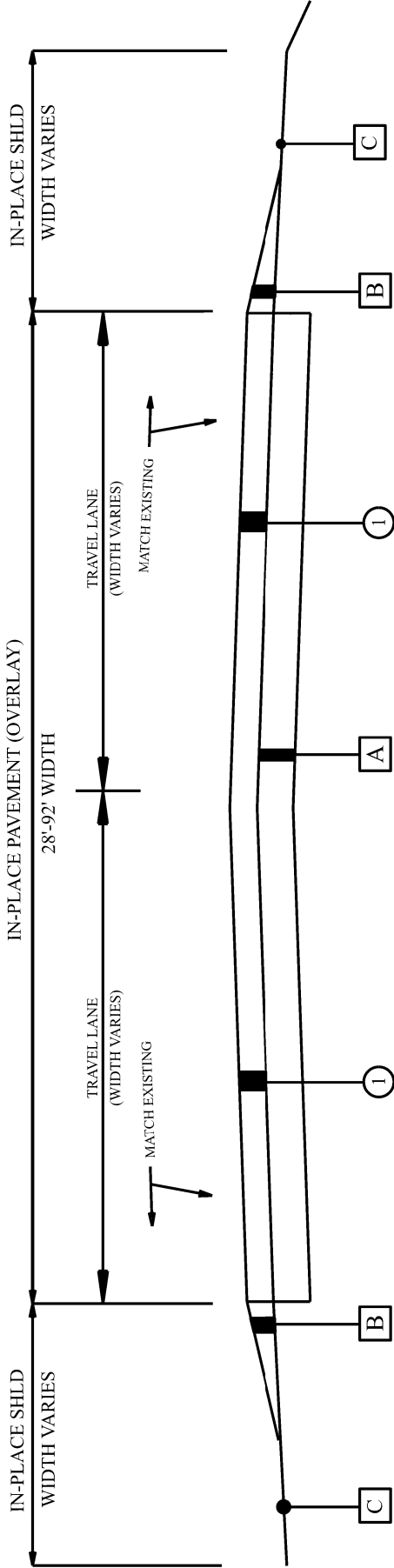
A IN-PLACE PAVEMENT (RETAIN, WIDEN, & OVERLAY)  
B EXCAVATION/BASE WORK TO BE PERFORMED BY COUNTY FORCES  
C IN-PLACE SHOULDER (RETAIN)

PROJECT NOTES: 201,202,204,205,206,207,213,  
215,216,218,219,221,222

TYPICAL SECTION  
PROJECT NO. SCP 59-969-25 (WEST)  
SHELBY COUNTY

PROJECT NUMBER	FISCAL YEAR	SHEET NO.	LAST SHEET
SCP 59-969-25 (WEST)	2025	2H	5

TYPICAL SECTION APPLIES TO UNIT 18W (LANDFILL ACCESS RD)



LEGEND

ITEM	UNIT	DESCRIPTION
① 424A-361	TON	REQ'D SUPERPAVE BITUMINOUS CONCRETE WEARING SURFACE LAYER, 3/4" MAXIMUM AGGREGATE SIZE MIX, ESAL RANGE C/D (165 LBS/SY)
<div>A</div>		IN-PLACE PAVEMENT (RETAIN & OVERLAY)
<div>B</div>		PERMANENT SHOULDER WORK TO BE PERFORMED BY SHELBY COUNTY
<div>C</div>		IN-PLACE SHOULDER (RETAIN)

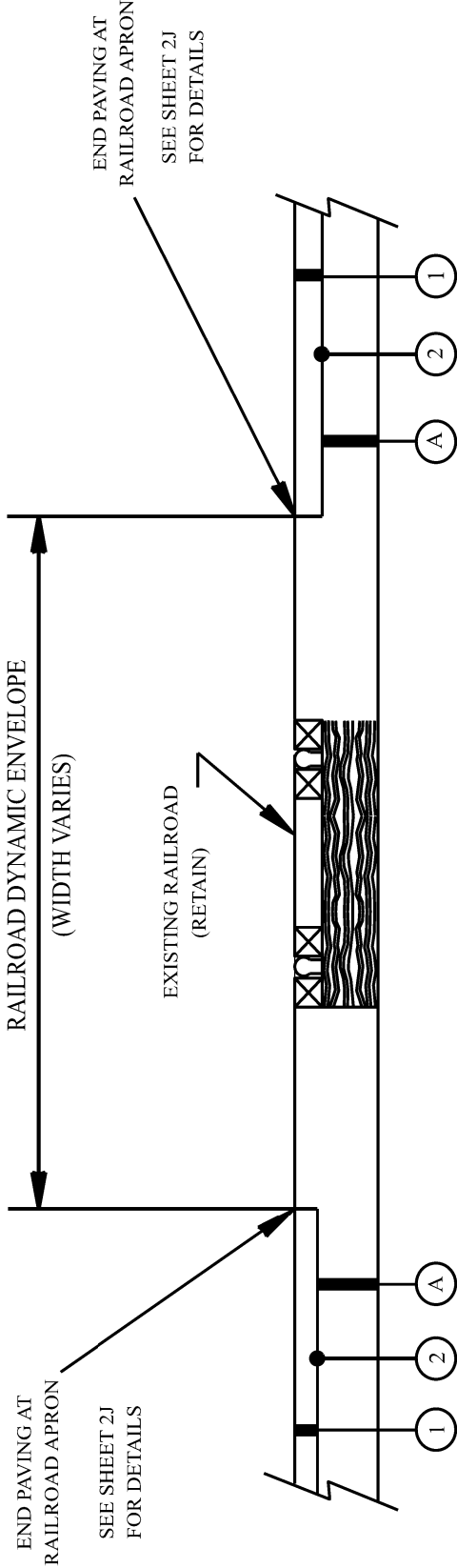
NOT TO SCALE

TYPICAL SECTION  
PROJECT NO. SCP 59-969-25 (WEST)  
SHELBY COUNTY

PROJECT NUMBER	FISCAL YEAR	SHEET NO.	LAST SHEET
SCP 59-969-25 (WEST)	2025	2-1	5

SKETCH SHOWING RESURFACING AT RAILROAD CROSSINGS:

CROSSING NO: 727894B (UNIT 1W: CR-10)  
639533E (UNIT 3W: CR-11)  
727850B (UNIT 4W: CR-260)  
727392P (UNIT 12W: LEACH CEMETERY RD)



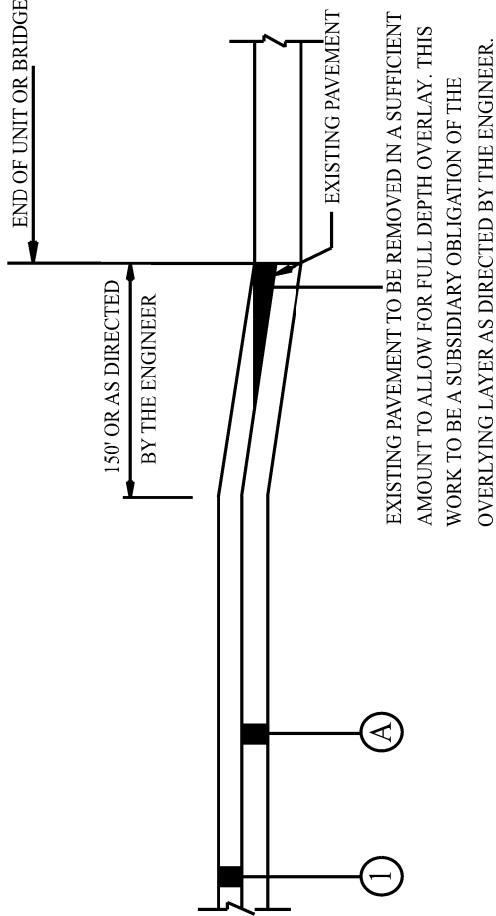
LEGEND

ITEM	UNIT	DESCRIPTION
① 424A-361	TON	REQ'D SUPERPAVE BITUMINOUS CONCRETE WEARING SURFACE LAYER, 3/4" MAXIMUM AGGREGATE SIZE MIX, ESAL RANGE C/D (SEE SHEET 2J FOR APPLICATION RATES)
② 408A-052	SQ YD	REQ'D PLANING EXISTING PAVEMENT (APPROXIMATELY 1.10" THRU 2.0" THICK)
A		IN-PLACE PAVEMENT (RETAIN)

NOT TO SCALE

TYPICAL SECTION  
PROJECT NO. SCP 59-969-25 (WEST)  
SHELBY COUNTY

PROJECT NUMBER	FISCAL YEAR	SHEET NO.	LAST SHEET
SCP 59-969-25 (WEST)	2025	2J	5



SKETCH SHOWING PAVEMENT TIE AT BEGIN/END OF UNIT,  
AT BRIDGE ENDS AND RR X-INGS

LEGEND

ITEM	UNIT
① 424A-361	TON

DESCRIPTION

REQ'D SUPERPAVE BITUMINOUS CONCRETE WEARING SURFACE LAYER, ¾" MAXIMUM AGGREGATE SIZE MIX, ESAL RANGE C/D (SEE SHEET 2K FOR APPLICATION RATES)

IN-PLACE PAVEMENT (PLANE AS REQUIRED)

NOT TO SCALE

Unit Descriptions							Reference Project No
County Named and Numbered Roads							SCP 59-969-25 (West)
Unit #	Name / Road #	Description	Length (Ft)	Width (Ft)	Comment		2025
#1W	CR-10	From CR-22 east to Aldrich RR-Xing	23,306	20	Patch, "G" Treat, Spot Level, Seal 165# <sup>3</sup> / <sub>4</sub> " Mix, Restripe		
#2W	CR-33 (Fungo Hollow Rd)	From CR-52 north to CR-35	12,881	25	Mill full width, Patch, Spot Level, Seal 185# <sup>3</sup> / <sub>4</sub> " Mix, Restripe		
#3W	CR-11	From Weatherly Club Dr north to CSX RR tracks near Gilbert Dr	1,483	24-38	Mill full width, Patch, Spot Level, Seal 185# <sup>3</sup> / <sub>4</sub> " Mix, Restripe		
#4W	CR-260	From CR-270 in Brantleyville west to Setco Mine Road	4,752	20	Patch, "G" Treat, Spot Level, Seal 165# <sup>3</sup> / <sub>4</sub> " Mix, Restripe		
#5W	Camelia Lane	North off CR-260 in Brantleyville	670	15	Patch, "G" treat, Spot Level, Seal 165# <sup>3</sup> / <sub>4</sub> " Mix		
#6W	Tulip Lane	North off CR-260 in Brantleyville	695	12	Patch, "G" treat, Spot Level, Seal 165# <sup>3</sup> / <sub>4</sub> " Mix		
#7W	CR-257 (Wooten Rd)	From CR-12 south to road's end	2,164	16	Patch, "G" treat, Spot Level, Seal 165# <sup>3</sup> / <sub>4</sub> " Mix, Restripe		
#8W	CR-105 (Bearden Rd)	West off US-31 in Pelham to SR-261	9,750	20	Mill full width (omit hatched section on shoulder just north of north entrance to Panther Circle), Patch, Spot Level, Seal 185# <sup>3</sup> / <sub>4</sub> " Mix, Restripe		
#9W	Heatherwood Drive	Roughly 800' west off CR-29 to CR-370 (Indian Valley Rd)	7,600	26	Patch, Spot Level, Restripe		
#10W	Seale Road	South off CR-86, 2 miles south of CR-42	4,224	15	Patch, "G" treat, Seal 200# <sup>3</sup> / <sub>4</sub> " Mix		
#11W	Bishop Lane	East off SR-119, south of CR-29	2,800	14-16	Spot level, Seal 165# <sup>3</sup> / <sub>4</sub> " Mix		
#12W	Leach Cemetery Road	East off SR-25 in Calera to CR-86	6,330	20	Patch, Seal 165# <sup>3</sup> / <sub>4</sub> " Mix		
#13W	CR-205	North off CR-10 in Aldrich to road's end	1,335	12	Patch, "G" treat, Spot Level, Seal 165# <sup>3</sup> / <sub>4</sub> " Mix		
#14W	Bice Circle	South off CR-10 in Aldrich	600	14	Patch, "G" treat, Spot Level, Seal 165# <sup>3</sup> / <sub>4</sub> " Mix		
#15W	Bluff Ridge Road	Between CR-2 (South Shades Crest Rd) and Jefferson County line	1,092	20	Patch, "G" treat, Spot Level, Seal 165# <sup>3</sup> / <sub>4</sub> " Mix		
#16W	Surrey Lane	From joint roughly 820' west off of SR-119 in Wagon Trace to end of road	2,426	24	Seal 90# <sup>3</sup> / <sub>8</sub> " Mix		
#17W	CR-251	North off CR-10 in Boothton to road's end	5,600	19	Widen 1' on each side of road, Patch, "G" treat, Spot level, Seal 165# <sup>3</sup> / <sub>4</sub> " Mix, Restripe		
#18W	Landfill Access Road	New landfill access road off SR-70	2,980	28-92	Seal 165 # <sup>3</sup> / <sub>4</sub> " Mix, Stripe		



REFERENCE PROJECT NO	FISCAL YEAR	SHEET NO
SCP 59-969-25 (WEST)	2025	2L

**PROJECT NOTES**  
**PROJECT NO. SCP 59-969-25 (WEST)**  
**SHELBY COUNTY**

- 201: THE MINIMUM REQUIREMENTS FOR PAVING OF TURNOUTS SHALL BE AS FOLLOWS, UNLESS OTHERWISE DIRECTED BY PROJECT ENGINEER:
- a. CITY STREETS, COUNTY ROADS AND STATE HIGHWAYS--PAVE TO THE BACK OF RADIUS WITH JOINTS MILLED BY MILLING MACHINE FULL WIDTH AS DESIGNATED BY PROJECT ENGINEER.
  - b. BUSINESS DRIVEWAYS--PAVE TO THE BACK OF THE EXISTING SHOULDER.
  - c. ALL OTHER TURNOUTS--PAVE A MINIMUM OF 3'.
  - d. PARTICULAR ATTENTION WILL BE GIVEN TO THE SLOPE OF ALL DRIVES EITHER RESIDENTIAL OR COMMERCIAL TO ASSURE EASY PASSAGE ON AND OFF THE ROADWAY. IT WILL BE THE RESPONSIBILITY OF THE CONTRACTOR TO EITHER MAKE NECESSARY ADJUSTMENTS DURING ONGOING PHASES OF PAVING OPERATION OR ADJUST AT A LATER DATE AS DIRECTED BY THE PROJECT ENGINEER.
- 202: RESURFACING OVERLAYS SHALL MATCH EXISTING SUPERELEVATION OF HORIZONTAL CURVE.
- 203: ALL SHOULDERS ON ALL UNITS SHALL BE CLIPPED AND BROOMED TO THE ENGINEER'S SATISFACTION PRIOR TO ANY AND ALL RESURFACING.
- 204: ALL EXCESS STONE WILL BE THE RESPONSIBILITY OF THE CONTRACTOR TO REMOVE FROM INTERSECTIONS, PARKING LOTS, DRIVEWAYS, AND ALL PUBLIC PROPERTIES. ALL EXCESS STONE SHALL BE REMOVED DAILY, UNLESS OTHERWISE DIRECTED BY THE PROJECT ENGINEER.
- 205: ALL SUBDIVISION UNIT TRUCK LOAD LIMITS SHALL BE IN ACCORDANCE WITH SHELBY COUNTY, TRUCK WEIGHT ORDINANCE (9 TONS PER AXLE). TRUCK WEIGHTS MAY BE RESTRICTED ON OTHER UNITS AT SHELBY COUNTY'S DISCRETION.
- 206: ITEM 424B-658, BITUMINOUS CONCRETE PLANT MIX, LEVELING ¾" MAX ESAL C/D SHALL BE APPLIED AS DIRECTED BY THE PROJECT ENGINEER.
- 207: CONTRACTOR SHALL TIE BEGINNING AND ENDING OF PROJECT AND AT BRIDGE CROSSINGS AS SHOWN IN THE SKETCH ON SHEET 2J.
- 208: MOBILIZATION AND CONSTRUCTION FUEL SHALL BE SUBSIDIARY OBLIGATION OF THE CONTRACT.
- 209: EXCESS MATERIAL THAT CANNOT BE USED TO FLUSH SLOPES WITHIN A PROJECT AREA SHALL BE WASTED AS DIRECTED BY THE PROJECT ENGINEER.
- 210: CONTRACTOR IS ULTIMATELY RESPONSIBLE FOR THE CONTINUOUS AND PROPER OPERATION OF ALL EXISTING UTILITIES. THE COUNTY SHALL COORDINATE RELOCATION OF UTILITIES WITH THE AFFECTED UTILITY COMPANIES.
- 211: CONTRACTOR IS RESPONSIBLE FOR MAKING CONTACT WITH LOCAL WATER AUTHORITIES AND OBTAINING PERMISSION OR A METER WITH WHICH TO ACQUIRE WATER FOR USE DURING THE PROJECT.
- 212: BASE LAYER COMPACTION SHALL MEET 100% OF THE MAXIMUM THEORETICAL DENSITY OF THE MATERIAL SPECIFIED TO THE SATISFACTION OF THE COUNTY ENGINEER.
- 213: ITEM 405A-000 SHALL BE MECHANICALLY APPLIED TO ACHIEVE UNIFORM DISTRIBUTION. HAND APPLICATION WILL BE ALLOWED ONLY ON TURNOUTS AND INTERSECTIONS.
- 214: UNITS #1W (CR-10) & #2W (CR-33) ARE DESIGNATED AS REBUILD ALABAMA ACT UNITS. THE CONTRACTOR SHALL INSTALL REBUILD ALABAMA SIGNAGE AT EACH END OF THE APPLICABLE UNITS PRIOR TO CONSTRUCTION. DETAILS AND SPECIFICATIONS ON THE REQUIRED SIGN RA-1 ARE INCLUDED ON THE ALDOT STANDARD DRAWING SHS-10, INDEX 71069. THE COST FOR THE PROCUREMENT AND INSTALLATION OF THESE SIGNS IS SUBSIDIARY TO THE CONTRACT.
- 215: ANY MAILBOX RESETS REQUIRED TO COMPLETE THE WORK IN THIS CONTRACT SHALL BE PERFORMED BY THE CONTRACTOR AND IS A SUBSIDIARY OBLIGATION OF THE CONTRACT.
- 216: ANY ROADWAYS WITH A TOTAL WIDTH OF LESS THAN 20' SHALL BE PAVED USING A MATERIAL STRIKE OFF PLATE.

REFERENCE PROJECT NO	FISCAL YEAR	SHEET NO
SCP 59-969-25 (WEST)	2025	2M

# PROJECT NOTES

## PROJECT NO. SCP 59-969-25 (WEST)

### SHELBY COUNTY

- 217: IT SHALL BE THE CONTRACTOR'S RESPONSIBILITY TO INVENTORY ALL IN-PLACE STRIPING, MARKINGS AND LEGENDS AND REFERENCE THE LOCATIONS, SO THAT ALL REQUIRED STRIPING, MARKINGS AND LEGENDS SHALL BE PLACED BACK IN THE SAME LOCATIONS AS THEY WERE BEFORE RESURFACING OPERATIONS BEGAN. THE WORK INVOLVED IN INVENTORYING AND REFERENCING SHALL BE A SUBSIDIARY OBLIGATION OF ITEM 701A-230. IF IN-PLACE STRIPING, MARKINGS AND LEGENDS DIFFER FROM REQUIREMENTS ON STANDARD DRAWINGS OR THE MUTCD, THE PROJECT ENGINEER SHALL BE NOTIFIED BEFORE WORK BEGINS.
- 218: ALL PATCHING SHALL BE IN ACCORDANCE WITH ITEM 410.03(c) AND SUBARTICLE 410.09(a) AND COMPLETED PRIOR TO RESURFACING. PATCHES SHALL BE A MINIMUM WIDTH OF 7'-0" AND MINIMUM DEPTH OF 4". THE EXACT LOCATION, WIDTH, LENGTH, AND DEPTH SHALL BE DETERMINED BY THE ENGINEER.
- 219: IF A DROP OFF OCCURES IN A TRANSVERSE DIRECTION DURING THE CONSTRUCTION OF THIS PROJECT, THE CONTRACTOR SHALL CONSTRUCT A TEMPORARY BITUMINOUS WEDGE AS DIRECTED BY THE ENGINEER. THE WORK, IF REQUIRED, SHALL BE PAID FOR AS ITEM 424A-340 OR 424A-361 DEPENDING UPON LOCATION OF WEDGE.
- 220: TEMPORARY TRAFFIC CONTROL MARKINGS SHALL BE USED FOR STOP LINES AND ARROWS ONLY. 4 INCH TEMPORARY STRIPE SHALL BE USED FOR A TEMPORARY CHANNELIZING STRIPE AS DIRECTED BY THE ENGINEER.
- 221: ANY DAMAGE TO IN-PLACE PAVING, CURB AND GUTTER, SIDEWALK, GRASSING, ETC. SHALL BE REPAIRED BY THE CONTRACTOR TO THE SATISFACTION OF THE ENGINEER AT NO COST TO THE PROJECT.
- 222: ANY MANHOLE OR UTILITY RESETS NECESSARY TO COMPLETE THE WORK SHALL BE PERFORMED BY THE CONTRACTOR. THE COST OF THIS WORK SHALL BE A SUBSIDIARY OBLIGATION OF THE CONTRACT.
- 223: REMOVAL OF PAVEMENT MARKERS PRIOR TO RESURFACING SHALL BE PERFORMED BY THE CONTRACTOR. THE COST OF THIS WORK SHALL BE A SUBSIDIARY OBLIGATION OF THE CONTRACT.
- 224: THE PRIME CONTRACTOR SHALL INSTALL A MINIMUM OF 70% OF THE TOTAL TONNAGE REQUIRED FOR ITEM 424A-361 UNLESS OTHERWISE APPROVED BY THE SHELBY COUNTY ENGINEER.
- 225: ALL FINAL STRIPING SHALL BE INSTALLED WITH A SHELBY COUNTY INSPECTOR ON SITE.
- 226: THE CONTRACTOR WILL HAVE 15 WORKING DAYS AFTER THE CURING PERIOD TO INSTALL PERMANENT TRAFFIC STRIPE AND PAVEMENT MARKERS. IF THESE ITEMS ARE NOT INSTALLED WITHIN 15 WORKING DAYS AFTER THE CURING PERIOD, THE CONTRACTOR SHALL BE RESPONSIBLE FOR APPLYING TEMPORARY APPLICATIONS EVERY MONTH UNTIL THE PERMANENT STRIPE IS COMPLETE. THIS NOTE SHALL ONLY APPLY TO UNITS #1W (CR-10), #2W (CR-33), #3W (CR-11), & #8W (CR-105).
- 227: UNITS #2W (CR-33), #3W (CR-11), & #8W (CR-105) SHOULD BE CONSIDERED FOR POSSIBLE NIGHT WORK DUE TO TRAFFIC VOLUMES.
- 228: THE CONTRACTOR SHALL PROVIDE AN OFF-DUTY POLICE OFFICER ON SITE FOR TRAFFIC CONTROL WHEN WORKING AT NIGHT. ANY ADDITIONAL COSTS ASSOCIATED WITH NIGHT WORK INCLUDING, BUT NOT LIMITED TO SIGNS, LIGHTS, POLICE OFFICERS, ETC. SHALL BE THE RESPONSIBILITY OF THE CONTRACTOR AND SHALL BE CONSIDERED A SUBSIDIARY OBLIGATION OF THE CONTRACT. THE CONTRACTOR SHALL NOTIFY THE SHELBY COUNTY HIGHWAY DEPARTMENT A MINIMUM OF ONE MONTH IN ADVANCE OF ANY NIGHT WORK.
- 229: UNITS #2W (CR-33), #3W (CR-11), & #8W (CR-105) SHALL HAVE NO LANE CLOSURES ALLOWED BETWEEN THE HOURS OF 6:00-8:30 AM OR 4:00-6:00 PM UNLESS OTHERWISE DIRECTED BY THE PROJECT ENGINEER.
- 230: NO SECTION OF PAVEMENT SHALL BE LEFT OVERNIGHT WITHOUT TRAFFIC STRIPING OR RAILROAD MARKINGS BEING IN PLACE. THIS INCLUDES BITUMINOUS TREATMENT "G" AND FINAL WEARING LAYER.
- 231: UNITS #2W (CR-33), #3W (CR-11), & #8W (CR-105) SHALL BE INITIATED AND COMPLETED AFTER MAY 22, 2025 AND PRIOR TO AUGUST 7, 2025.
- 232: ALL PERMANENT STRIPING INCLUDING HANDICAP SPACES FOR THE PARKING AREA IN UNIT 17W (CR-251) SHALL BE PAID FOR AS 701G-009 SOLID WHITE, CLASS 1, TYPE A TRAFFIC STRIPE.
- 233: THE CONTRACTOR SHALL NOTIFY THE RAILROAD IN WRITING A MINIMUM OF 30 DAYS BEFORE WORK IS TO BE PERFORMED WITHIN THE RAILROAD'S RIGHT-OF-WAY. THE CONTRACTOR SHALL TAKE MEASURES TO PERMIT THE WORK AND SECURE CLEARANCE FROM THE RAILROAD BEFORE PROCEEDING. THE CONTRACTOR SHALL COMPLY WITH THE RAILROAD'S SAFETY RULES FOR ANY PERSONNEL WORKING ON THE RAILROAD'S RIGHT-OF-WAY. IT SHALL BE THE CONTRACTOR'S RESPONSIBILITY TO TAKE ALL PRECAUTIONS NECESSARY NOT TO DAMAGE THE RAILROAD'S PROPERTY. IF DAMAGE DOES OCCUR, THE CONTRACTOR WILL BE RESPONSIBLE FOR HAVING THE PROPERTY CORRECTED OR REPLACED, WHICHEVER THE RAILROAD COMPANY DEEMS NECESSARY.
- 234: THE CONTRACTOR SHALL COMPLETE THE ENTIRE PROJECT BY SEPTEMBER 19, 2025.

REFERENCE PROJECT NO	FISCAL YEAR	SHEET NO
SCP 59-969-25 (WEST)	2025	2N

# TRAFFIC CONTROL NOTES PROJECT NO. SCP 59-969-25 (WEST) SHELBY COUNTY

700. THE TRAFFIC CONTROL PLAN IS DEVELOPED IN CONFORMANCE WITH THE MANUAL ON UNIFORM TRAFFIC CONTROL DEVICES PART 6, 2009 EDITION. THE TRAFFIC CONTROL DEVICES INDICATED REPRESENT CONDITIONS KNOWN DURING PLAN DEVELOPMENT. IN THE EVENT ACTUAL PHYSICAL CONDITIONS WARRANT ADDITIONAL TRAFFIC CONTROL DEVICES, THEY SHALL BE INSTALLED IN CONFORMANCE WITH THE MUTCD PART 6 AS DIRECTED BY THE ENGINEER. COST SHALL BE PAID FOR AS A SUBSIDIARY OBLIGATION.
701. THE CONTRACTOR WILL BE PERMITTED TO DEVELOP HIS OWN TRAFFIC CONTROL PLAN TO BE USED IN LIEU OF THIS TRAFFIC CONTROL PLAN IF APPROVED BY THE ENGINEER. A CONTRACTOR DEVELOPED TRAFFIC CONTROL PLAN SHALL BE A SUBSIDIARY COST OF THE CONTRACT.
702. THE CONTRACTOR SHALL ENSURE THAT ALL TRAFFIC CONTROL DEVICES ARE PLACED AS REQUIRED IN THE TRAFFIC CONTROL PLANS AND ARE IN SERVICEABLE CONDITION AT ALL TIMES.
703. ALL SIGNS AND BARRICADES MAY BE ADJUSTED BY THE ENGINEER FOR THE SAFETY OF THE TRAVELING PUBLIC WHEN NECESSARY.
704. ADDITIONAL SIGNS MAY BE REQUIRED IF DEEMED NECESSARY BY THE ENGINEER. ADDITIONAL ITEMS TO BE A SUBSIDIARY COST OF THE CONTRACT.
705. NO DIRECT PAYMENT WILL BE MADE FOR REMOVING, RELOCATING, OR COVERING OF IN PLACE SIGNS, BARRELS, BARRICADES, OR OTHER TRAFFIC CONTROL DEVICES AS REQUIRED IN THIS TRAFFIC CONTROL PLAN (SEE SPECIAL DRAWING NO. TCD-100 IN THE ALABAMA DEPARTMENT OF TRANSPORTATION'S SPECIAL AND STANDARD HIGHWAY DRAWINGS, 2024 EDITION). COST TO BE A SUBSIDIARY OBLIGATION OF THE CONTRACT.
706. THE QUANTITIES SHOWN ON THE TRAFFIC CONTROL PLAN SHEET ARE CONSIDERED TO BE THE MINIMUM REQUIREMENT FOR HANDLING TRAFFIC AT ANY GIVE TIME DURING CONSTRUCTION.
707. THE CONTRACTOR IS TO REMOVE, RELOCATE, OR COVER DURING CONSTRUCTION AND THEN RESET OR UNCOVER UPON COMPLETION OF A PARTICULAR SECTION ANY CONFLICTING IN-PLACE ROADWAY SIGNS AS DIRECTED BY THE ENGINEER. COST TO BE A SUBSIDIARY OBLIGATION OF THE CONTRACT.
708. ALL CONSTRUCTION SIGNS PLACED BEFORE WORK BEGINS SHALL BE COVERED WITH BLACK PLASTIC OR SOME OTHER SUITABLE MATERIAL SO THAT THE SIGNS ARE NOT VISIBLE UNTIL WORK IS IN PROGRESS.
709. ALL TRAFFIC CONTROL DEVICES SHALL BE A SUBSIDIARY COST OF THE CONTRACT.
710. ALL BLACK ON ORANGE CONSTRUCTION SIGNS SHALL BE FABRICATED USING TYPES IV OR VIII FLUORESCENT ORANGE REFLECTIVE SHEETING MATERIAL FOR THE SIGN BACKGROUND.
711. DURING NON-WORKING HOURS NO EQUIPMENT OR MATERIAL SHALL BE PARKED OR STORED CLOSER THAN 30 FEET TO THE EDGE OF ANY ROADWAY CARRYING TRAFFIC. WHEN THIS IS NOT PRACTICAL, IT SHALL BE PLACED IN AN AREA APPROVED BY THE ENGINEER AND DELINEATED BY REFLECTORIZED DRUMS. THIS INCLUDES STORAGE OF TRAFFIC CONTROL DEVICES SUCH AS TRAILER MOUNTED OR OTHER TEMPORARY SIGNS, BARRICADES, DRUMS, ETC., WHICH ARE NOT IN USE DURING NON-WORKING HOURS. THESE ARE TO BE FURNISHED BY THE CONTRACTOR WITHOUT COST TO SHELBY COUNTY.

REFERENCE PROJECT NO	FISCAL YEAR	SHEET NO
SCP 59-969-25 (WEST)	2025	2-O

# TRAFFIC CONTROL NOTES PROJECT NO. SCP 59-969-25 (WEST) SHELBY COUNTY

712. WHERE THE LOCATION OF A REQUIRED SIGN FALLS IN A DRIVEWAY, SIDEWALK, BRIDGE, ETC., OR WHERE THE VISIBILITY OF A SIGN IS LIMITED TO THE TRAVELING PUBLIC, THE LOCATION SHALL BE ADJUSTED AS DIRECTED BY THE ENGINEER.
713. THE CONTRACTOR SHALL PLACE ALL ADVANCE WARNING SIGNS BEFORE PROCEEDING WITH THIS WORK.
714. ALL VEHICLES, EQUIPMENT, PERSONNEL (EXCEPT FLAGGERS), AND THEIR ACTIVITIES, ARE RESTRICTED AT ALL TIMES TO ONE SIDE OF THE PAVEMENT UNLESS OTHERWISE AUTHORIZED BY THE ENGINEER.
715. THE CONTRACTOR SHALL MAINTAIN AT LEAST ONE ACCESS TO BUSINESSES AND RESIDENCES DURING ALL PHASES OF CONSTRUCTION.
716. CONSTRUCTION SIGNS MOUNTED ON TEMPORARY SUPPORTS SHALL BE MOUNTED AT A MINIMUM HEIGHT OF 5 FEET.
717. FLAGGERS SHALL BE PROPERLY ATTIRED, EQUIPPED WITH STAFF MOUNTED STOP/SLOW PADDLES IN SIGHT OF EACH OTHER OR HAVE DIRECT COMMUNICATION AT ALL TIMES. FLAGGER STATION LOCATION MAY BE VARIED FROM THOSE SHOWN BASED ON ROADWAY CONDITIONS AT THE TIME OF THE LANE CLOSURE.
718. FLAGGERS ARE TO BE USED WHEN DIRECTED BY THE ENGINEER. SIGNS SHALL BE PLACED AT THE APPROPRIATE TIME AND SHALL BE COVERED OR REMOVED WHEN FLAGGERS ARE NOT ON DUTY AND DURING NON-WORKING HOURS.
719. FOR MOVING OPERATIONS, THE TRAFFIC CONES MAY BE DELETED IF THE FLAGGERS ARE IN SIGHT OF EACH OTHER OR IF A PILOT CAR IS USED ON A TWO LANE ROADWAY.
720. DURING THE WIDENING OR RESURFACING OF ANY ROADWAY CARRYING TRAFFIC, THE CONTRACTOR SHALL ADVISE THE MOTORISTS OF ANY EDGE OF PAVEMENT DROP-OFFS 3 INCHES OR GREATER BY PLACING SHOULDER DROP-OFF SIGNS EVERY ½ MILE BEGINNING PRIOR TO THE WIDENING OR RESURFACING. REQUIRED SHOULDER WORK TO ELIMINATE THE DROP-OFFS SHALL BE PURSUED IN AN EXPEDITIOUS MANNER FOLLOWING THE WIDENING AND/OR RESURFACING.
721. DURING THE WIDENING OR RESURFACING OF ANY ROADWAY CARRYING TRAFFIC, THE CONSTRUCTION ZONE SHALL NOT BE LONGER THAN 2 MILES AT ANY GIVEN TIME.

SUMMARY OF QUANTITIES					Reference Project No	Fiscal Year	Sheet No
SCP 59-969-25 (West)					SCP 59-969-25 (West)	2025	3
Pay Item	Unit	Quantity	Description				
327D-021	Ton	274	Plant Mix Bituminous Base, Widening Mix 2				
401B-111	Sq. Yd.	95,042	Bituminous Treatment "G", CRS-2 (With Polymer Additive)				
405A-000	Gal	14,030	Tack Coat				
408A-052	Sq. Yd.	75,193	Planing Existing Pavement (Approximately 1.10" thru 2.0")				
410H-000	Each	3	Material Remixing Device				
424A-336	Ton	317	Bituminous Concrete Wearing Surface Layer, ¾" Max Agg., ESAL A/B				
424A-361	Ton	17,566	Bituminous Concrete Wearing Surface Layer, ¾" Max Agg., ESAL C/D				
424A-370	Ton	765	Bituminous Concrete Wearing Surface Layer, Widening, ¾" Max Agg., ESAL C/D				
424B-656	Ton	1,375	Bituminous Concrete Upper Binder Layer, Patching, 1½" Max Agg., ESAL C/D				
424B-658	Ton	925	Bituminous Concrete Upper Binder Layer, Leveling, ¾" Max Agg., ESAL C/D				
701A-007	Mile	8	Solid White, Class 1, Type A Traffic Stripe (5" Wide)				
701A-011	Mile	1	Broken Yellow, Class 1, Type A Traffic Stripe (5" Wide)				
701A-016	Mile	10	Solid Yellow, Class 1, Type A Traffic Stripe (5" Wide)				
701A-227	Mile	21	Solid White, Class 2, Type A Traffic Stripe (5" Wide)				
701A-230	Mile	26	Solid Yellow, Class 2, Type A Traffic Stripe (5" Wide)				
701A-244	Mile	1	Broken Yellow, Class 2, Type A Traffic Stripe (5" Wide)				
701B-207	Lin. Ft.	3,136	Dotted, Class 2, Type A Traffic Stripe (5" Wide)				
701C-002	Mile	3	Broken Temporary Traffic Stripe (Paint)				
701C-003	Mile	88	Solid Temporary Traffic Stripe (Paint)				
701G-009	Lin. Ft.	1,500	Solid White, Class 1, Type A Traffic Stripe				
701G-146	Lin. Ft.	1,628	Solid White, Class W, Type A Traffic Stripe (5" Wide)				
701G-154	Lin. Ft.	1,628	Solid Yellow, Class W, Type A Traffic Stripe (5" Wide)				
701H-002	Lin. Ft.	3,256	Solid Traffic Stripe Removed (Tape)				
703A-002	Sq. Ft.	8,667	Traffic Control Markings, Class 2, Type A				
703B-002	Sq. Ft.	975	Traffic Control Legends, Class 2, Type A				
703D-002	Sq. Ft.	5,642	Temporary Traffic Control Markings (Paint)				
705A-030	Each	208	Pavement Markers, Class A-H, Type 2-C				
705A-032	Each	622	Pavement Markers, Class A-H, Type 1-B				
705A-037	Each	1,803	Pavement Markers, Class A-H, Type 2-D				
705A-038	Each	406	Pavement Markers, Class A-H, Type 2-E				
730H-001	Lin. Ft.	3,160	Loop Wire				

SUMMARY OF QUANTITIES												
Required Asphalt Resurfacing												
Unit #	Road # or Name	327D-021	401B-111	405A-000	408A-052	410H-000	424A-336	424A-361	424A-370	424B-656	424B-658	
		Plant Mix Bituminous Base, Widening, Mix 2	Bituminous Treatment Type "G", CRS-2 (With Polymer Additive)	Tack Coat	Planing Existing Pavement (1.1"-2" Depth)	Material Remixing Device	Bituminous Wearing Surface 3/8" Max Agg, ESAL A/B	Bituminous Wearing Surface 3/4" Max Agg, ESAL C/D	Bituminous Wearing Surface (Widening) 3/4" Max Agg, ESAL C/D	Bituminous Upper Binder Layer (Patching) 1 1/2" Max Agg, ESAL C/D	Bituminous Upper Binder Layer (Leveling) 3/4" Max Agg, ESAL C/D	
		Ton	SqYd	Gal	SqYd	Each	Ton	Ton	Ton	Ton	Ton	
#1W	CR-10		51,792	750		1		4,273	75	425	250	
#2W	CR-33			4,230	40,145	1		3,514	200	50	50	
#3W	CR-11			500	4,635			393	40	50	25	
#4W	CR-260		10,560	250				872	100	200	75	
#5W	Camelia Lane		1,117	50				93			25	
#6W	Tulip Lane		927	40				77		75	25	
#7W	CR-257 (Wooten Road)		3,848	80				318	25	75	25	
#8W	CR-105 (Bearden Road)			3,050	30,413	1		2,814	300	25	25	
#9W	Heatherwood Drive			60						225	25	
#10W	Seale Road		7,040	50				704		25		
#11W	Bishop Lane			500				385			75	
#12W	Leach Cemetery Road			1,410				1,161		25	25	
#13W	CR-205		1,780	25				147		50	50	
#14W	Bice Circle		934	25				78		25	25	
#15W	Bluff Ridge Road		2,427	40				201		75	25	
#16W	Surrey Lane			700			317					
#17W	CR-251	274	14,617	250				1,236	25	50	200	
#18W	Landfill Access Road			2,020				1,300				
Totals:		274	95,042	14,030	75,193	3	317	17,566	765	1,375	925	

SUMMARY OF QUANTITIES												
Required Asphalt Resurfacing												
Reference Project No		Fiscal Year						Sheet No				
SCP 59-969-25 (West)		2025						3B				
Unit #	Road # or Name	701A-007	701A-011	701A-016	701A-227	701A-230	701A-244	701B-207	701C-002	701C-003	701G-009	701G-146
		Solid White, Class 1, Type A Traffic Stripe (5" Wide)	Broken Yellow, Class 1, Type A Traffic Stripe	Solid Yellow, Class 1, Type A Traffic Stripe (5" Wide)	Solid White, Class 2, Type A Traffic Stripe (5" Wide)	Solid Yellow, Class 2, Type A Traffic Stripe (5" Wide)	Broken Yellow, Class 2, Type A Traffic Stripe (5" Wide)	Dotted Class 2, Type A Traffic Stripe (5" Wide)	Broken Temporary Traffic Stripe (Paint)	Solid Temporary Traffic Stripe (Paint)	Solid White, Class 1, Type A Traffic Stripe	Solid White, Class W, Type A Traffic Stripe (5" Wide)
		Mile	Mile	Mile	Mile	Mile	Mile	Lin Ft	Mile	Mile	Lin Ft	Lin Ft
#1W	CR-10				9	9		267		28		
#2W	CR-33				5	5	1	1,260	2	20		1,086
#3W	CR-11				1	1		80		2		336
#4W	CR-260	2		2						4		
#5W	Camelia Lane											
#6W	Tulip Lane											
#7W	CR-257 (Wooten Road)			1						1		
#8W	CR-105 (Bearden Road)				3	4		536		13		206
#9W	Heatherwood Drive					3						
#10W	Seale Road											
#11W	Bishop Lane											
#12W	Leach Cemetery Road	3	1	3					1	5		
#13W	CR-205											
#14W	Bice Circle											
#15W	Bluff Ridge Road				1	1						
#16W	Surrey Lane			1								
#17W	CR-251	3		3						7	1,500	
#18W	Landfill Access Road				2	3		993		8		
Totals:		8	1	10	21	26	1	3,136	3	88	1,500	1,628

SUMMARY OF QUANTITIES

SUMMARY OF QUANTITIES															
Required Asphalt Resurfacing															
		701G-154	701H-002	703A-002	703B-002	703D-002	705A-030	705A-032	705A-037	705A-038	730H-001				
Unit #	Road # or Name	Solid Yellow, Class W, Type A Traffic Stripe (5" Wide)	Solid Traffic Stripe Removed (Tape)	Traffic Control Markings, Class 2, Type A	Traffic Control Legends, Class 2, Type A	Temporary Traffic Control Markings (Paint)	Pavement Markers, Class A-H, Type 2-C	Pavement Markers, Class A-H, Type 1-B	Pavement Markers, Class A-H, Type 2-D	Pavement Markers, Class A-H, Type 2-E	Loop Wire	Lin Ft			
#1W	CR-10			345		690			583	Each					
#2W	CR-33	1,086	2,172	1,500	269	1,000	47	271	290	125	1,844				
#3W	CR-11	336	672	343	23	318		95	26	47	766				
#4W	CR-260			250	26	500			120						
#5W	Camelia Lane			24		48									
#6W	Tulip Lane			24		48									
#7W	CR-257 (Wooten Road)			58		116									
#8W	CR-105 (Bearden Road)	206	412	2,342	475	2,546	25	226	212	113	550				
#9W	Heatherwood Drive			102			6		110						
#10W	Seale Road														
#11W	Bishop Lane														
#12W	Leach Cemetery Road			244	137	244		30	158						
#13W	CR-205														
#14W	Bice Circle														
#15W	Bluff Ridge Road								28						
#16W	Surrey Lane								20						
#17W	CR-251								140						
#18W	Landfill Access Road			3,435	45	132	130		116	121					
Totals:		1,628	3,256	8,667	975	5,642	208	622	1,803	406	3,160				



REFERENCE PROJECT NO	FISCAL YEAR	SHEET NO
SCP 59-969-25 (WEST)	2025	3D

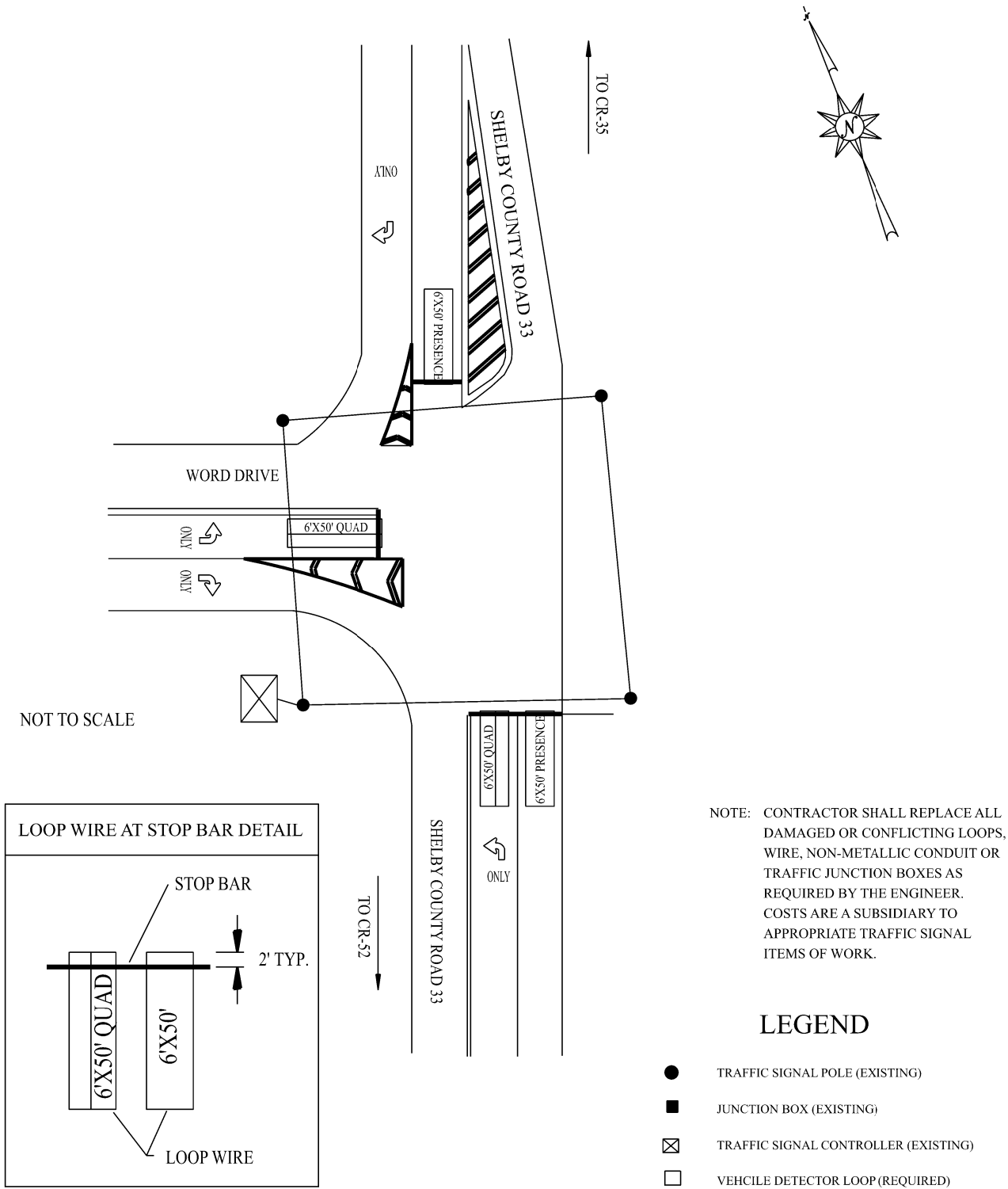
REQUIRED TRAFFIC SIGNAL LOOP DETECTOR INSTALLATION			
Intersection	730H-001	Special or Standard Drawing	Comments
	Loop Wire		
	LIN FT		
CR-33 at Word Drive	1,844	A	2 - 6'x50' Quad Loops (NB); 2 - 6'x50' Presence Loops (NB)
CR-11 at Weatherly Club Drive	766	A	1 - 6'X6' Pulse Loop (SB)
CR-105 (Bearden Rd) at SR-261	550	A	1 - 6'x50' Quad Loop (NB)
TOTAL	3,160		

Legend		
A	Special Drawing No.	Index No.
	T.S.D.-730-11	73030

REFERENCE PROJECT NO	FISCAL YEAR	SHEET NO
SCP 59-969-25 (WEST)	2025	3E

TRAFFIC SIGNAL LAYOUT

CR-33 @ Word Drive



NOTE: CONTRACTOR SHALL REPLACE ALL DAMAGED OR CONFLICTING LOOPS, WIRE, NON-METALLIC CONDUIT OR TRAFFIC JUNCTION BOXES AS REQUIRED BY THE ENGINEER. COSTS ARE A SUBSIDIARY TO APPROPRIATE TRAFFIC SIGNAL ITEMS OF WORK.

LEGEND

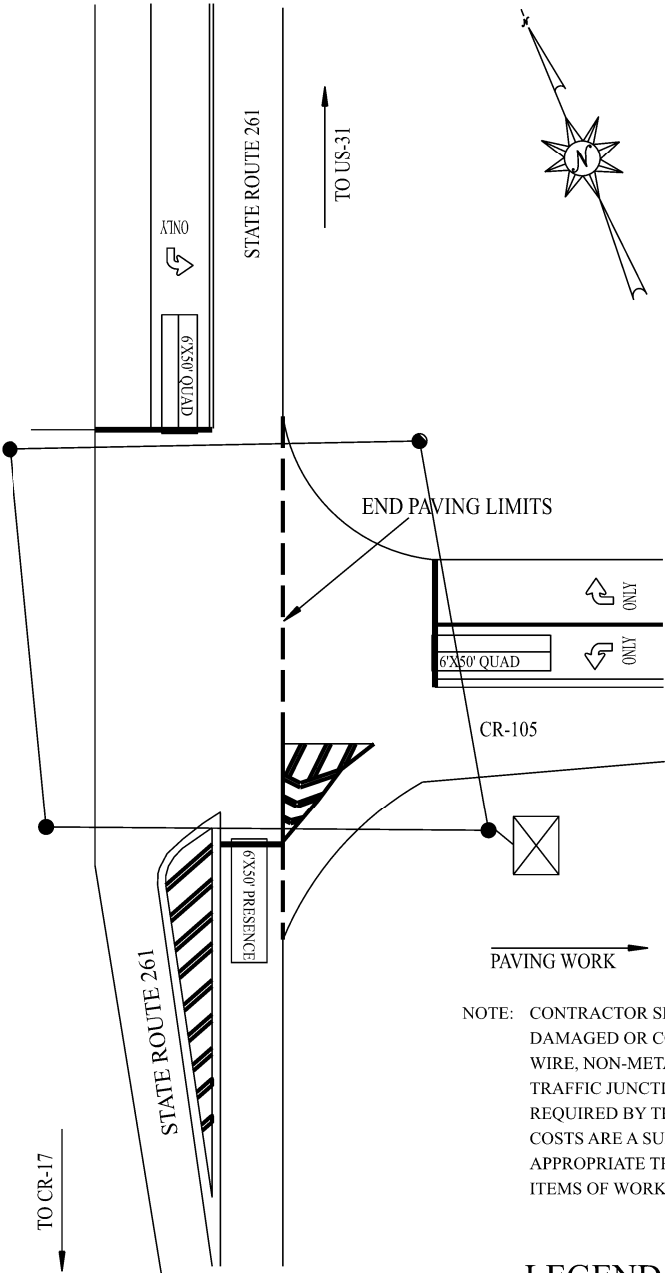
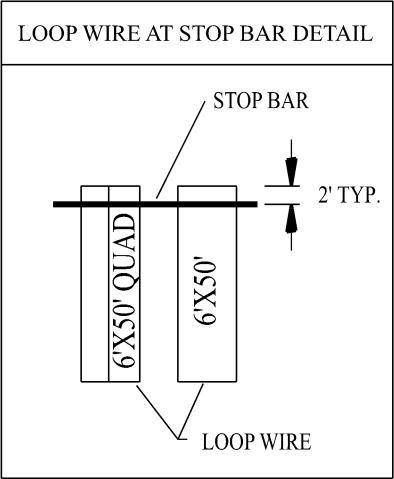
- TRAFFIC SIGNAL POLE (EXISTING)
- JUNCTION BOX (EXISTING)
- ⊠ TRAFFIC SIGNAL CONTROLLER (EXISTING)
- VEHICLE DETECTOR LOOP (REQUIRED)



REFERENCE PROJECT NO	FISCAL YEAR	SHEET NO
SCP 59-969-25 (WEST)	2025	3G

# TRAFFIC SIGNAL LAYOUT CR-105 @ SR-261

NOT TO SCALE



NOTE: CONTRACTOR SHALL REPLACE ALL DAMAGED OR CONFLICTING LOOPS, WIRE, NON-METALLIC CONDUIT OR TRAFFIC JUNCTION BOXES AS REQUIRED BY THE ENGINEER. COSTS ARE A SUBSIDIARY TO APPROPRIATE TRAFFIC SIGNAL ITEMS OF WORK.

## LEGEND

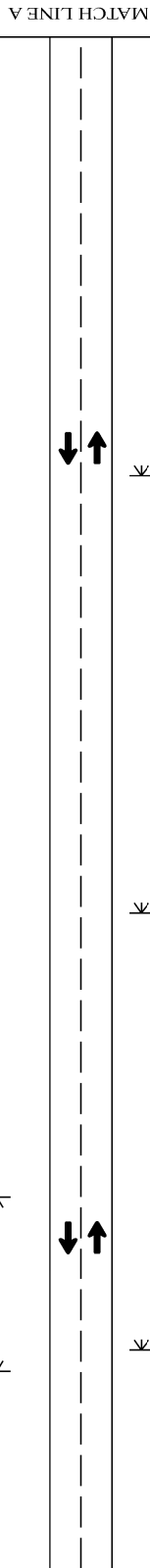
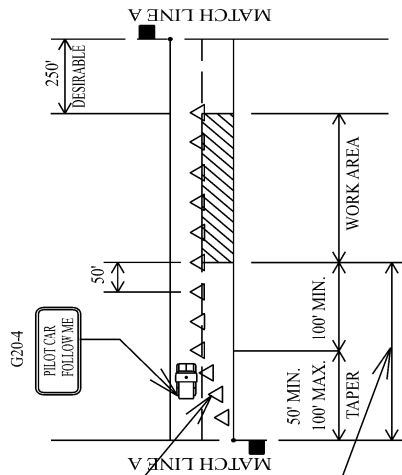
- TRAFFIC SIGNAL POLE (EXISTING)
- JUNCTION BOX (EXISTING)
- ⊠ TRAFFIC SIGNAL CONTROLLER (EXISTING)
- VEHICLE DETECTOR LOOP (REQUIRED)

TRAFFIC CONTROL PLAN SHEET

TWO LANE HIGHWAY, ONE LANE CLOSURE

TAPER SHALL BE FORMED BY PLACING ONE CONE PER FOOT OF LANE WIDTH.

SEE TABLE 6E-1 OF THE MUTCD PART 6 FOR DISTANCE OF FLAGGER STATION IN ADVANCE OF WORK SPACE



250'

250'

250'



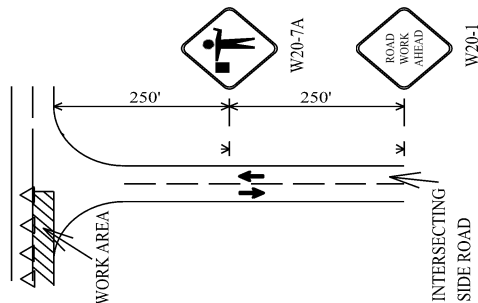
REQUIRED SIGN SIZES	
W20-1	48" X 48"
W20-4	48" X 48"
W20-7	48" X 48"
G20-4	36" X 18"

LEGEND

- TEMPORARY MOUNTED SIGN
- POST MOUNTED SIGN
- CONES WITH BALAST
- FLAGGER

TRAFFIC CONTROL FOR INTERSECTING SIDE ROADS WITHIN WORK AREA

NOTE: THE W20-1 AND W20-7A SIGNS TO BE USED ON INTERSECTING ROADS SHALL BE 36"X36" IN SIZE. THE TEMPORARY MOUNTED W20-1 ROAD WORK AHEAD SIGN SHOWN ON THE SIDE ROAD WILL NOT BE REQUIRED IF ONE IS ALREADY POST MOUNTED ON THE SIDE STREET.



DESIGN BUREAU SPECIAL DRAWING  
DETAILS FOR TRAFFIC CONTROL FOR  
RESURFACING TWO LANE HIGHWAYS

DRAWN BY:  
DATE DRAWN:

INDEX NO.

SPECIAL PROJECT DETAIL

SHEET TITLE

ROUTE

VARIOUS

NOT TO SCALE

TEMPORARY TRAFFIC CONTROL PLAN SHEET

