

STATE	REFERENCE PROJECT NO	FISCAL YEAR	SHEET NO	LAST SHEET NO
AL	SCP 59-965-24 (WEST)	2024	1	6

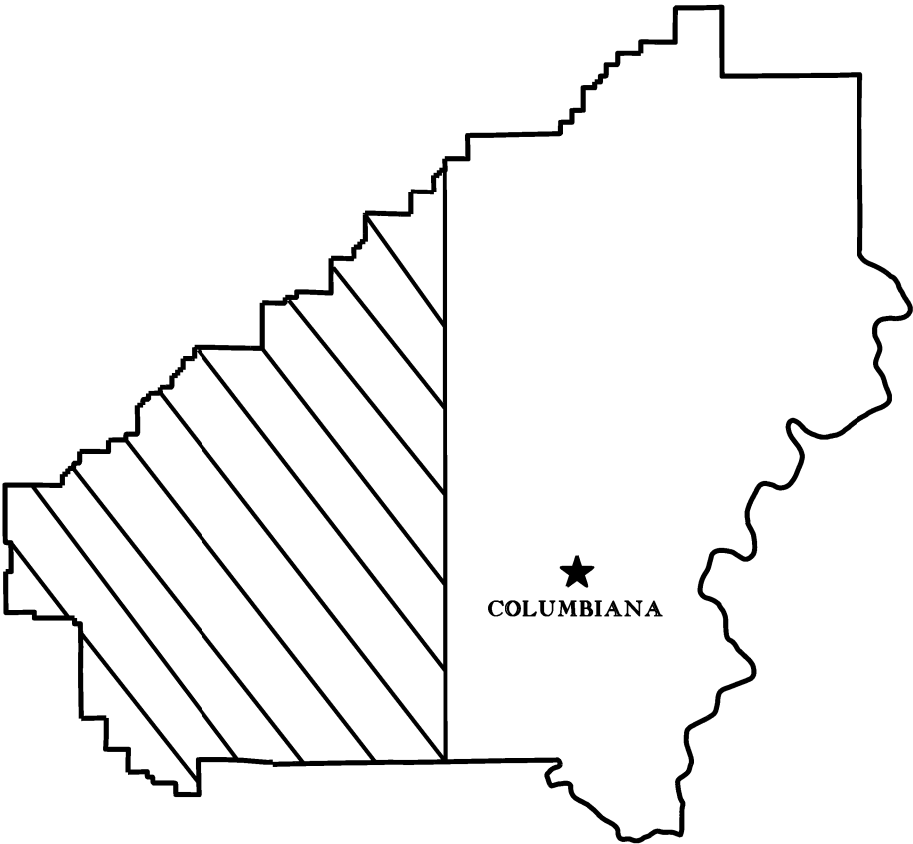
# SHELBY COUNTY HIGHWAY DEPARTMENT

## PLANS OF PROPOSED PROJECT SCP 59-965-24 (WEST)

REPAIR, RESURFACING & TRAFFIC STRIPE FOR VARIOUS COUNTY ROADS  
IN WEST SHELBY COUNTY, AL



STATE LOCATOR



COUNTY ENGINEER  
DAVID WILLINGHAM, P.E.



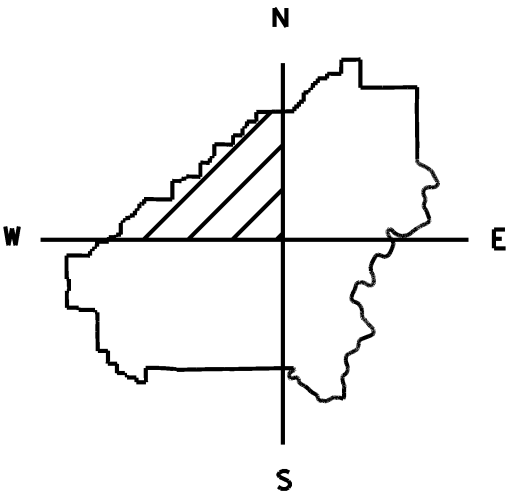
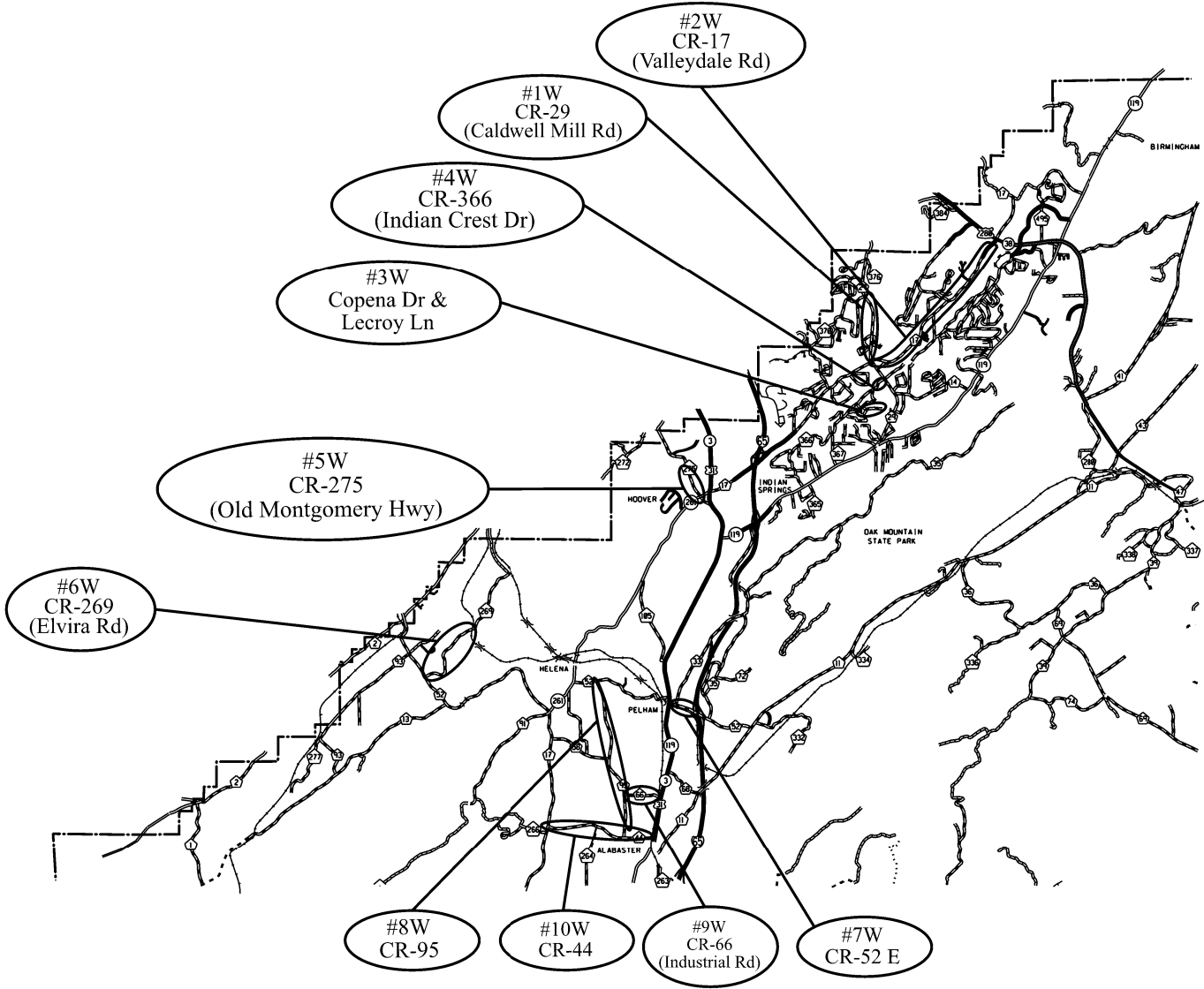
### COUNTY COMMISSIONERS

DISTRICT #1 KEVIN MORRIS	DISTRICT #2 TOMMY EDWARDS
DISTRICT #3 JON PARKER	DISTRICT #4 WARD WILLIAMS
DISTRICT #5 ELWYN BEARDEN	DISTRICT #6 JEFF BRUMLOW
DISTRICT #7 LINDSEY ALLISON	DISTRICT #8 RICK SHEPHERD
DISTRICT #9 DR. ROBBIE HAYES	

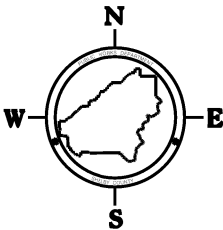
NOTE : THESE PLANS HAVE BEEN PREPARED TO  
CONFORM WITH ALABAMA DEPARTMENT  
OF TRANSPORTATION STANDARD  
SPECIFICATIONS DATED 2022.

REFERENCE PROJECT NO	FISCAL YEAR	SHEET NO
SCP 59-965-24 (WEST)	2024	1A

# PROJECT LOCATIONS PLANS OF PROPOSED PROJECT SCP 59-965-24 (WEST)



COUNTY LOCATOR



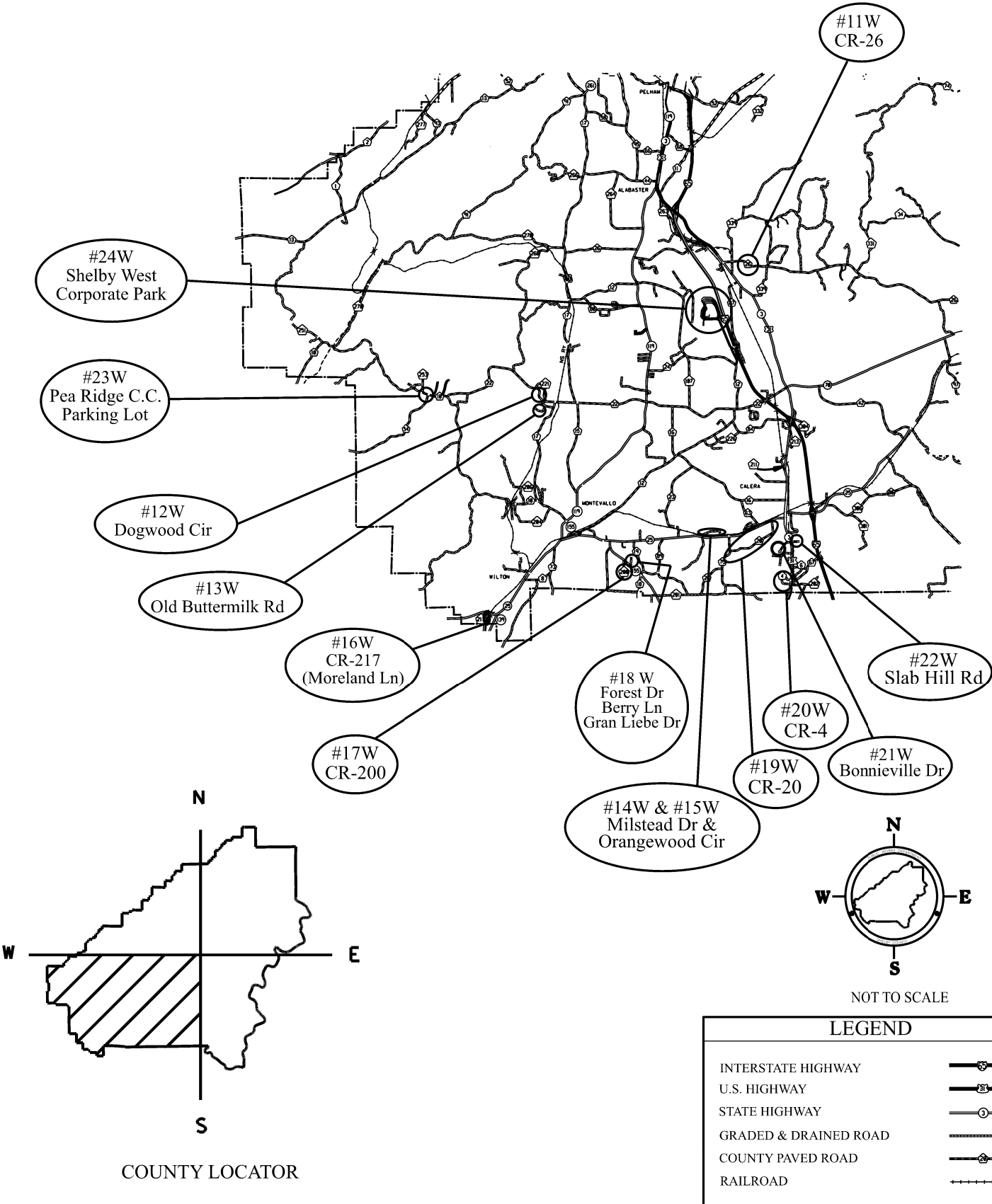
NOT TO SCALE

LEGEND	
INTERSTATE HIGHWAY	
U.S. HIGHWAY	
STATE HIGHWAY	
GRADED & DRAINED ROAD	
COUNTY PAVED ROAD	
RAILROAD	

REFERENCE PROJECT NO	FISCAL YEAR	SHEET NO
SCP 59-965-24 (WEST)	2024	1B

PROJECT LOCATIONS

PLANS OF PROPOSED PROJECT SCP 59-965-24 (WEST)



REFERENCE PROJECT NO	FISCAL YEAR	SHEET NO
SCP 59-965-24 (WEST)	2024	1C

# INDEX TO SHEETS PROJECT NO. SCP 59-965-24 (WEST) SHELBY COUNTY

SHEET NO. 1	TITLE SHEET
SHEET NO. 1A-1B	PROJECT LOCATIONS
SHEET NO. 1C	INDEX TO SHEETS
SHEET NO. 2-2-I	TYPICAL SECTIONS
SHEET NO. 2J-2K	UNIT DESCRIPTIONS
SHEET NO. 2L-2M	PROJECT NOTES
SHEET NO. 2N-2-O	TRAFFIC CONTROL NOTES
SHEET NO. 3	SUMMARY OF QUANTITIES
SHEET NO. 3A-3C	SUMMARY OF QUANTITIES PER UNIT
SHEET NO. 3D-3G	TRAFFIC SIGNAL LOOP DETECTOR SHEETS
SHEET NO. 4-6	TRAFFIC CONTROL PLANS

THE FOLLOWING IS A LIST OF STANDARD OR SPECIAL DRAWINGS CONTAINED IN THE ALABAMA DEPARTMENT OF TRANSPORTATION SPECIAL AND STANDARD HIGHWAY DRAWINGS BOOKLET DATED 2024 WHICH APPLY TO THIS PROJECT:

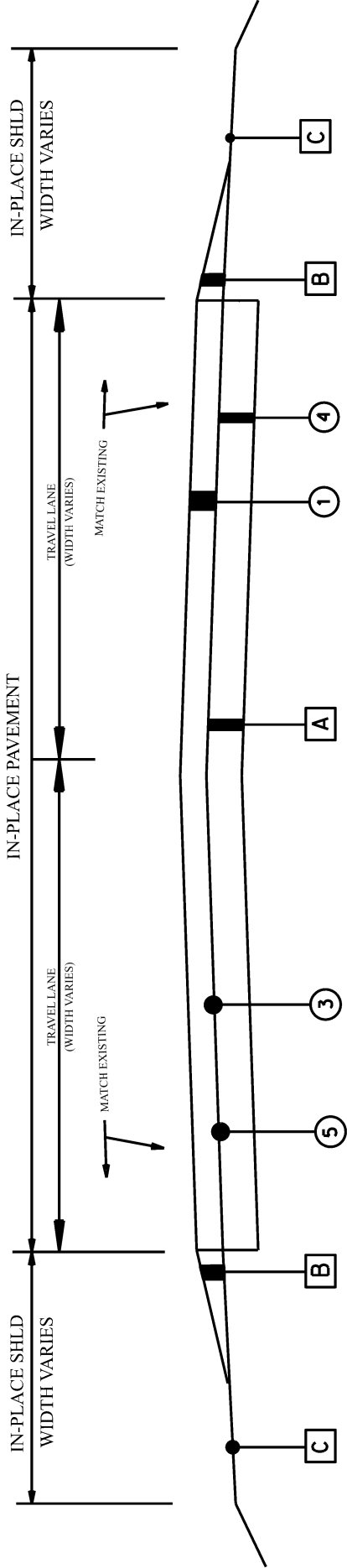
<u>INDEX NO.</u>	<u>DRAWING NO.</u>	<u>DESCRIPTION</u>
20901	MB-209-1	DETAILS OF MOUNTING MAILBOXES (SHEET 1 OF 3)
20902	MB-209-1	DETAILS OF MOUNTING MAILBOXES (SHEET 2 OF 3)
20903	MB-209-1	DETAILS OF MOUNTING MAILBOXES (SHEET 3 OF 3)
42801	SBS-428-A	DETAIL SHOWING SCORING BITUMINOUS OR CONCRETE PAVEMENT SURFACE BY CUTTING
68004	TO-107	DETAILS OF INTERSECTION AND TURNOUTS
68019	SSEC-1	STANDARD SUPERELEVATION OF CURVES (SHEET 4 OF 14)
70101	PS-701-6	DETAILS OF TRAFFIC STRIPING FOR TWO LANE HIGHWAYS
70104	197-NPL	DETAILS NO PASSING LINES - 2 LANE, TWO DIRECTION ROADWAY
70301	TCM-703	PAVEMENT LEGENDS & MARKINGS (SHEET 1 OF 2)
70302	TCM-703	PAVEMENT LEGENDS & MARKINGS (SHEET 2 OF 2)
70501	PM-705-1	DETAILS OF PAVEMENT MARKERS CLASS A, A-H & B
70504	PM-705-2	DETAILS SHOWING APPLICATION OF PAVEMENT MARKERS
71017	IHS-710-12	DETAILS OF ROADWAY SIGN POSTS (SMALL CHANNEL AND TUBULAR SECTION)
71032	IHS-710-21	DETAILS FOR LOCATION AND MOUNTING STANDARD FLAT PANEL SIGNS ON U-CHANNEL AND TUBULAR POSTS
71069	SHS-10	STANDARD HIGHWAY SIGNS
71090	SHS-26	STANDARD HIGHWAY SIGNS
71091	SHS-27	STANDARD HIGHWAY SIGNS
71092	SHS-28	STANDARD HIGHWAY SIGNS
71093	SHS-29	STANDARD HIGHWAY SIGNS
71094	SHS-30	STANDARD HIGHWAY SIGNS
71095	SHS-31	STANDARD HIGHWAY SIGNS
73036	T.S.D.-730-11	LOOP WIRE INSTALLATION
73504	RRX-107-2	RAILROAD CROSSING ACTIVE WARNING - SIGNS AND PAVEMENT MARKINGS
73507	RRX-107-3	DIMENSIONS FOR RAILROAD CROSSING SIGNS, SIGNALS, AND MARKINGS
74007	TCD-100	DETAILS FOR TRAFFIC CHANNELIZATION DEVICES
74201	PCMS-710	DETAILS OF PORTABLE CHANGEABLE MESSAGE SIGNS (SHEET 1 OF 3)
74202	PCMS-710	DETAILS OF PORTABLE CHANGEABLE MESSAGE SIGNS (SHEET 2 OF 3)
74203	PCMS-710	DETAILS OF PORTABLE CHANGEABLE MESSAGE SIGNS (SHEET 3 OF 3)

PROJECT NOTES: 201,202,203,204,205,206,  
207,213,215,216,218,219,  
221,222,223,224

TYPICAL SECTION  
PROJECT NO. SCP 59-965-24 (WEST)  
SHELBY COUNTY

PROJECT NUMBER	FISCAL YEAR	SHEET NO.	LAST SHEET
SCP 59-965-24 (WEST)	2024	2	6

TYPICAL SECTION APPLIES TO UNITS 6W, 12W, 13W, 16W, 17W, 19W, 20W, & 21W



LEGEND

ITEM UNIT DESCRIPTION

- |   |          |       |  |
|---|----------|-------|--|
| ① | 424A-361 | TON   | REQ'D SUPERPAVE BITUMINOUS CONCRETE WEARING SURFACE LAYER, 3/4" MAXIMUM AGGREGATE SIZE MIX, ESAL RANGE C/D (165 LBS/SY)                                      |
| ③ | 401B-111 | SQ YD | REQ'D BITUMINOUS TREATMENT G, CRS-2 (WITH POLYMER ADDITIVE)  |
| ④ | 424B-656 | TON   | REQ'D SUPERPAVE BITUMINOUS CONCRETE UPPER BINDER LAYER, PATCHING, 1 1/2" MAXIMUM AGGREGATE SIZE MIX, ESAL RANGE C/D (440 LBS/SY OR AS DIRECTED BY ENGINEER)  |
| ⑤ | 424B-658 | TON   | REQ'D SUPERPAVE BITUMINOUS CONCRETE UPPER BINDER LAYER, LEVELING, 3/4" MAXIMUM AGGREGATE SIZE MIX, ESAL RANGE C/D (THICKNESS VARIES AS DIRECTED BY ENGINEER) |

IN-PLACE PAVEMENT (RETAIN)

CONTRACTOR SHALL BE RESPONSIBLE FOR TEMPORARY DROP-OFFS; PERMANENT SHOULDER WORK TO BE PERFORMED BY SHELBY COUNTY (REFER TO SHEET 5)

IN-PLACE SHOULDER (RETAIN)

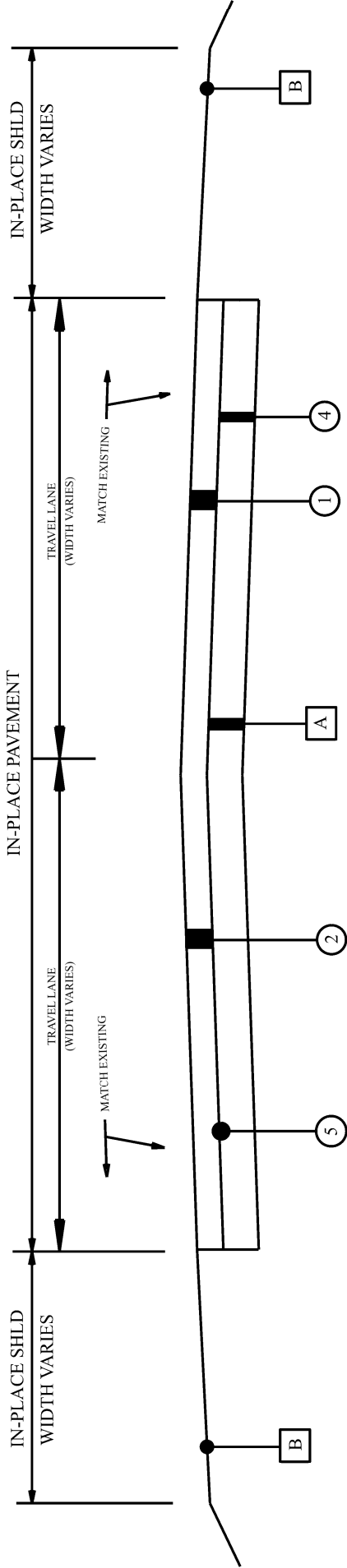
NOT TO SCALE

PROJECT NOTES: 201,202,203,204,205,206,  
207,213,214,215,216,218,  
219,221,222,223,224,227,  
229

TYPICAL SECTION  
PROJECT NO. SCP 59-965-24 (WEST)  
SHELBY COUNTY

PROJECT NUMBER	FISCAL YEAR	SHEET NO.	LAST SHEET
SCP 59-965-24 (WEST)	2024	2A	6

TYPICAL SECTION APPLIES TO UNIT 5W (CR-275/OLD MONTGOMERY HWY)



LEGEND

ITEM	UNIT	DESCRIPTION
① 424A-361	TON	REQ'D SUPERPAVE BITUMINOUS CONCRETE WEARING SURFACE LAYER, 3/4" MAXIMUM AGGREGATE SIZE MIX, ESAL RANGE C/D (185 LBS/SY)
② 408A-052	SQ YD	REQ'D PLANING EXISTING PAVEMENT (APPROXIMATELY 1.10" THRU 2.0" THICK) (PLANE APPROXIMATELY 1.5") (FULL WIDTH OF STREETS)
④ 424B-656	TON	REQ'D SUPERPAVE BITUMINOUS CONCRETE UPPER BINDER LAYER, PATCHING, 1 1/2" MAXIMUM AGGREGATE SIZE MIX, ESAL RANGE C/D (440 LBS/SY OR AS DIRECTED BY THE ENGINEER)
⑤ 424B-658	TON	REQ'D SUPERPAVE BITUMINOUS CONCRETE UPPER BINDER LAYER, LEVELING, 3/4" MAXIMUM AGGREGATE SIZE MIX, ESAL RANGE C/D (THICKNESS VARIES AS DIRECTED BY THE ENGINEER)

IN-PLACE PAVEMENT (RETAIN)

IN-PLACE SHOULDER (RETAIN)

NOT TO SCALE

PROJECT NOTES: 201,202,203,204,205,206,  
207,213,214,215,216,218,  
219,221,222,223,224,227,  
229

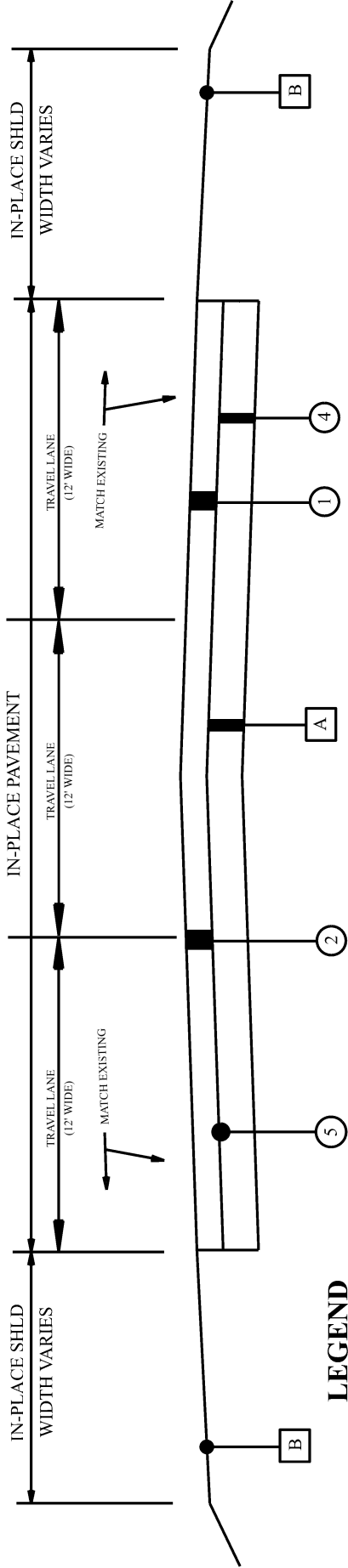
TYPICAL SECTION  
PROJECT NO. SCP 59-965-24 (WEST)  
SHELBY COUNTY

PROJECT NUMBER	FISCAL YEAR	SHEET NO.	LAST SHEET
SCP 59-965-24 (WEST)	2024	2B	6

TYPICAL SECTION APPLIES TO UNIT 9W (CR-66/INDUSTRIAL RD)

STA TO STA	IN PLACE
*0+00 - 8+15	48' - 52'
8+15 - 9+96	38' - 52'
9+96 - 25+29	38'
25+29 - 26+89	38' - 52'
26+89 - 37+69	52' - 68'

\*STA 0+00 IS THE BACK OF RADIUS JOINT AT CR-95



LEGEND

DESCRIPTION

ITEM UNIT

- ① 424A-361 TON REQ'D SUPERPAVE BITUMINOUS CONCRETE WEARING SURFACE LAYER, 3/4" MAXIMUM AGGREGATE SIZE MIX, ESAL RANGE C/D (185 LBS/SY)
- ② 408A-052 SQ YD REQ'D PLANING EXISTING PAVEMENT (APPROXIMATELY 1.10" THRU 2.0" THICK (PLANE APPROXIMATELY 1.5")) (FULL WIDTH OF STREETS)
- ④ 424B-656 TON REQ'D SUPERPAVE BITUMINOUS CONCRETE UPPER BINDER LAYER, PATCHING, 1 1/2" MAXIMUM AGGREGATE SIZE MIX, ESAL RANGE C/D (440 LBS/SY OR AS DIRECTED BY THE ENGINEER)
- ⑤ 424B-658 TON REQ'D SUPERPAVE BITUMINOUS CONCRETE UPPER BINDER LAYER, LEVELING, 3/4" MAXIMUM AGGREGATE SIZE MIX, ESAL RANGE C/D (THICKNESS VARIES AS DIRECTED BY THE ENGINEER)

IN-PLACE PAVEMENT (RETAIN)

IN-PLACE SHOULDER (RETAIN)

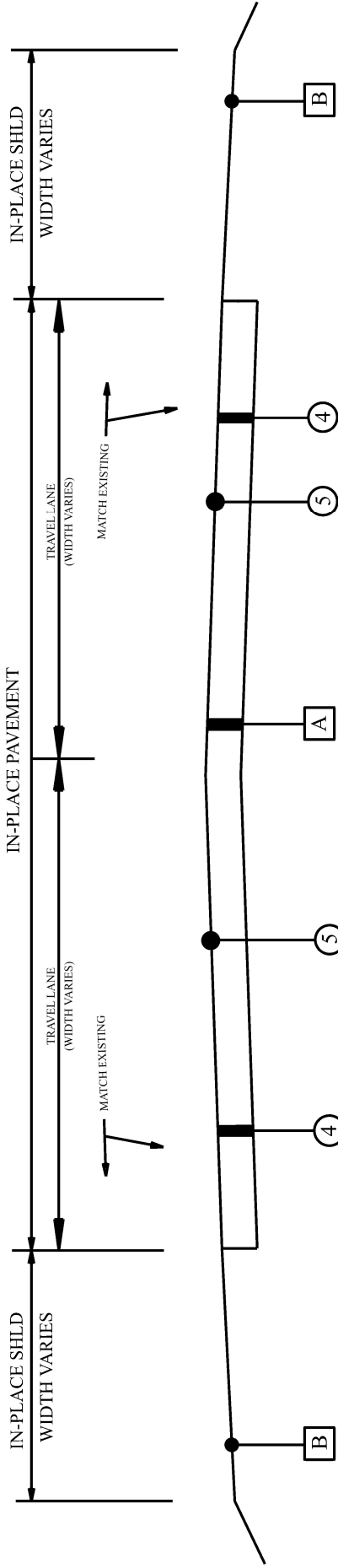
NOT TO SCALE

PROJECT NOTES: 201,202,203,204,205,206,  
207,213,215,216,218,219,  
221,222,223,224,227,229

TYPICAL SECTION  
PROJECT NO. SCP 59-965-24 (WEST)  
SHELBY COUNTY

PROJECT NUMBER	FISCAL YEAR	SHEET NO.	LAST SHEET
SCP 59-965-24 (WEST)	2024	2C	6

TYPICAL SECTION APPLIES TO UNITS 1W, 2W, 8W, & 10W (CR-29, CR-17, CR-95, & CR-44)



LEGEND

DESCRIPTION

ITEM UNIT

4	424B-656	TON	REQ'D SUPERPAVE BITUMINOUS CONCRETE UPPER BINDER LAYER, PATCHING, 1 1/2" MAXIMUM AGGREGATE SIZE MIX, ESAL RANGE C/D (440 LBS/SY OR AS DIRECTED BY THE ENGINEER)
5	424B-658	TON	REQ'D SUPERPAVE BITUMINOUS CONCRETE UPPER BINDER LAYER, LEVELING, 3/4" MAXIMUM AGGREGATE SIZE MIX, ESAL RANGE C/D (THICKNESS VARIES AS DIRECTED BY THE ENGINEER)
A			IN-PLACE PAVEMENT (RETAIN)
B			IN-PLACE SHOULDER (RETAIN)

NOT TO SCALE

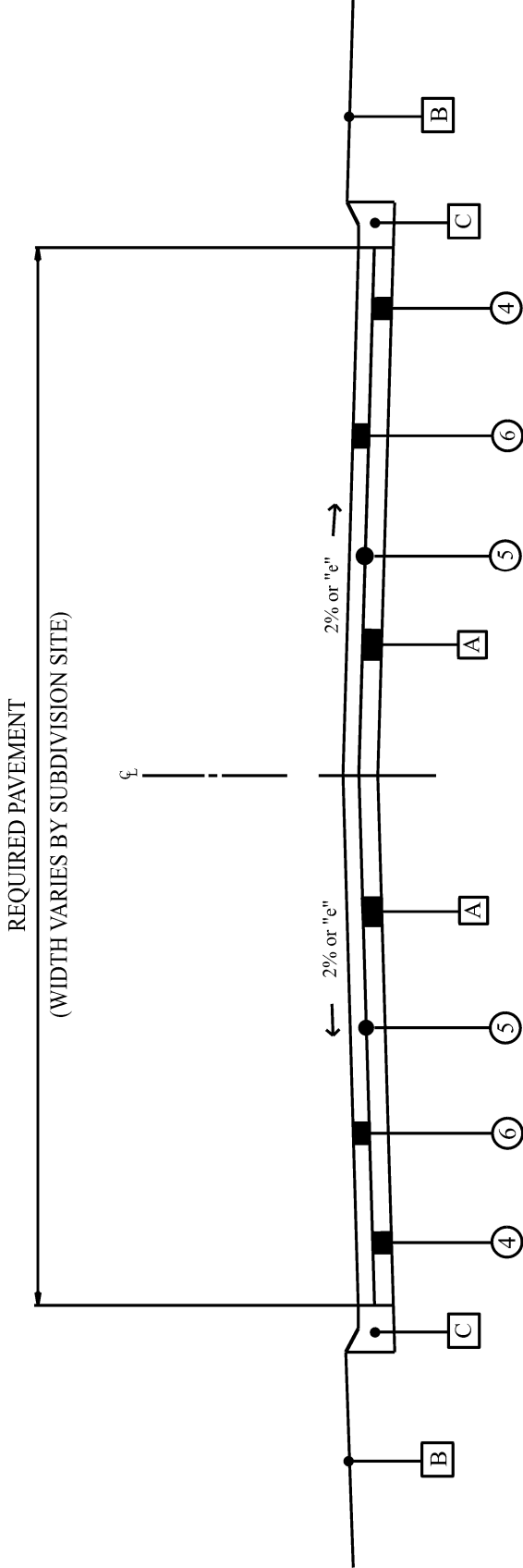


PROJECT NOTES: 201,202,204,205,206,207,213,  
215,216,218,219,221,222,224

TYPICAL SECTION  
PROJECT NO. SCP 59-965-24 (WEST)  
SHELBY COUNTY

PROJECT NUMBER	FISCAL YEAR	SHEET NO.	LAST SHEET
SCP 59-965-24 (WEST)	2024	2D	6

TYPICAL SECTION APPLIES TO UNIT 3W (COPENA DR & LECROY LN)



LEGEND

ITEM	UNIT	DESCRIPTION
④	TON	REQ'D SUPERPAVE BITUMINOUS CONCRETE UPPER BINDER LAYER, PATCHING, 1 1/2" MAXIMUM AGGREGATE SIZE MIX, ESAL RANGE C/D (440 LBS/SY OR AS DIRECTED BY ENGINEER)
⑤	TON	REQ'D SUPERPAVE BITUMINOUS CONCRETE UPPER BINDER LAYER, LEVELING, 3/4" MAXIMUM AGGREGATE SIZE MIX, ESAL RANGE C/D (THICKNESS VARIES AS DIRECTED BY THE ENGINEER)
⑥	TON	REQ'D SUPERPAVE BITUMINOUS CONCRETE WEARING SURFACE LAYER, 1/2" MAXIMUM AGGREGATE SIZE MIX, ESAL RANGE A/B (110 LBS/SY)
A		IN PLACE PAVEMENT (RETAIN)
B		IN PLACE SHOULDER (RETAIN)
C		IN PLACE VALLEY GUTTER (RETAIN)

NOT TO SCALE

PROJECT NUMBER	FISCAL YEAR	SHEET NO.	LAST SHEET
SCP 59-965-24 (WEST)	2024	2E	6

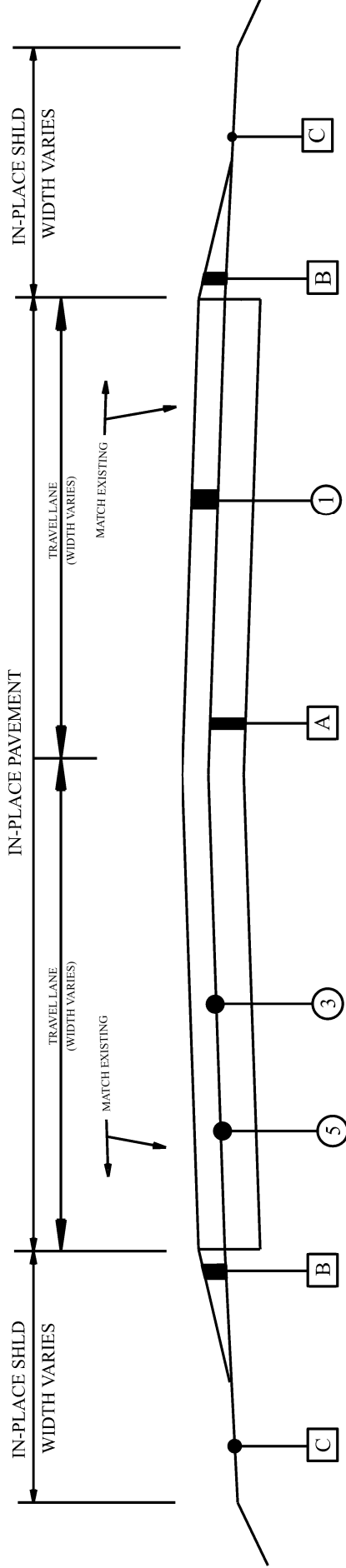
TYPICAL SECTION

PROJECT NO. SCP 59-965-24 (WEST)

SHELBY COUNTY

PROJECT NOTES: 201,202,203,204,205,206,  
207,213,215,216,218,219,  
221,222,223,224

TYPICAL SECTION APPLIES TO UNITS 14W, 15W, 18W & 22W  
(MILSTEAD DR, ORANGEWOOD CIR, FOREST DR, BERRY LN, GRAN LIEBE DR & SLAB HILL RD)



LEGEND

ITEM

UNIT

DESCRIPTION

- 1

424A-361

TON

REQ'D SUPERPAVE BITUMINOUS CONCRETE WEARING SURFACE LAYER, 3/4" MAXIMUM AGGREGATE SIZE MIX, ESAL RANGE C/D (165 LBS/SY)
- 3

401B-111

SQ YD

REQ'D BITUMINOUS TREATMENT G, CRS-2 (WITH POLYMER ADDITIVE)
- 5

424B-658

TON

REQ'D SUPERPAVE BITUMINOUS CONCRETE UPPER BINDER LAYER, LEVELING, 3/4" MAXIMUM AGGREGATE SIZE MIX, ESAL RANGE C/D (THICKNESS VARIES AS DIRECTED BY ENGINEER)
- A

IN-PLACE PAVEMENT (RETAIN)
- B

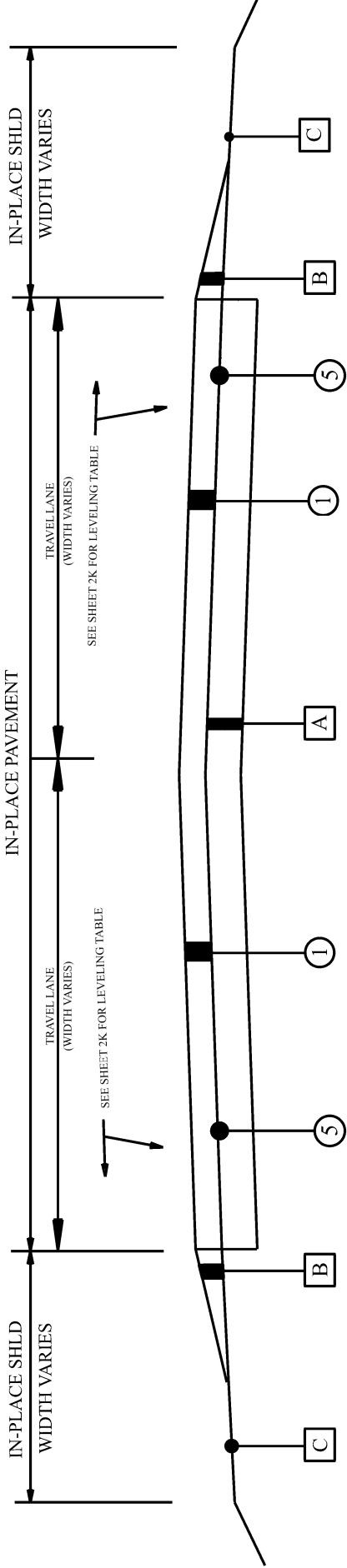
CONTRACTOR SHALL BE RESPONSIBLE FOR TEMPORARY DROP-OFFS; PERMANENT SHOULDER WORK TO BE PERFORMED BY SHELBY COUNTY (REFER TO SHEET 5)
- C

IN-PLACE SHOULDER (RETAIN)

PROJECT NOTES: 201,202,203,204,205,206,  
207,213,215,216,218,219  
221,222,223,224,227,229

TYPICAL SECTION  
PROJECT NO. SCP 59-965-24 (WEST)  
SHELBY COUNTY

TYPICAL SECTION APPLIES TO UNIT 11W (CR-26)  
(SEE SHEET 2-I FOR LEVELING TABLE)



LEGEND

DESCRIPTION

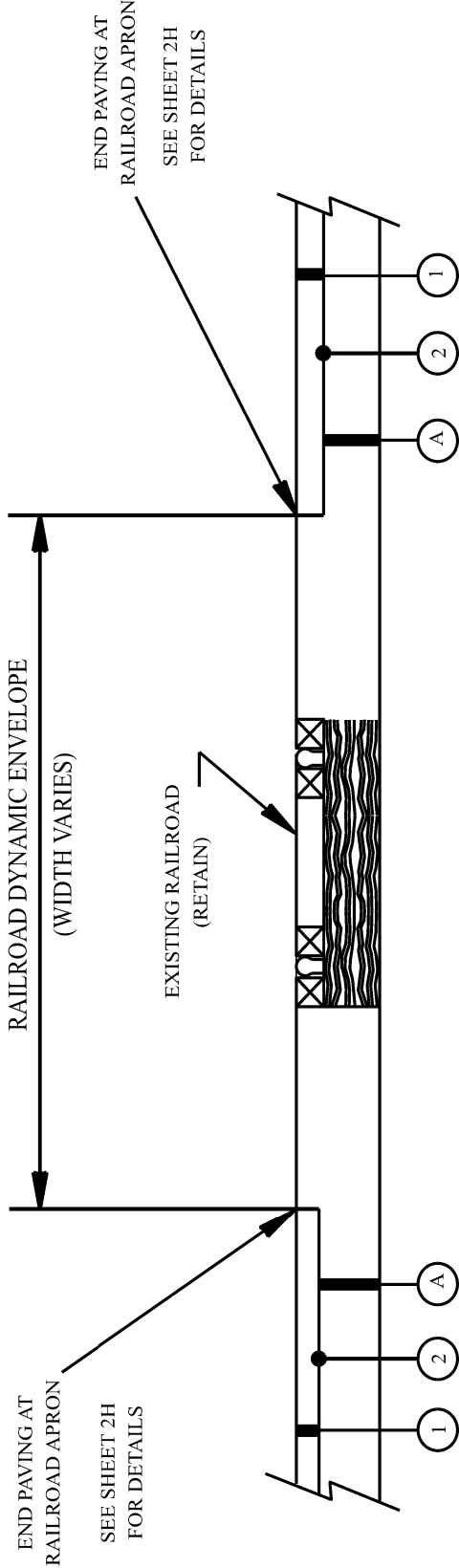
ITEM	UNIT	DESCRIPTION
① 424A-361	TON	REQ'D SUPERPAVE BITUMINOUS CONCRETE WEARING SURFACE LAYER, 3/4" MAXIMUM AGGREGATE SIZE MIX, ESAL RANGE C/D (185 LBS/SY)
⑤ 424B-658	TON	REQ'D SUPERPAVE BITUMINOUS CONCRETE UPPER BINDER LAYER, LEVELING, 3/4" MAXIMUM AGGREGATE SIZE MIX, ESAL RANGE C/D (THICKNESS VARIES AS DIRECTED BY ENGINEER)
A		IN-PLACE PAVEMENT (RETAIN)
B		CONTRACTOR SHALL BE RESPONSIBLE FOR TEMPORARY DROP-OFFS; PERMANENT SHOULDER WORK TO BE PERFORMED BY SHELBY COUNTY (REFER TO SHEET 5)
C		IN-PLACE SHOULDER (RETAIN)

PROJECT NUMBER	FISCAL YEAR	SHEET NO.	LAST SHEET
SCP 59-965-24 (WEST)	2024	2F	6

TYPICAL SECTION  
PROJECT NO. SCP 59-965-24 (WEST)  
SHELBY COUNTY

SKETCH SHOWING RESURFACING AT RAILROAD CROSSINGS:

CROSSING NO: 352258N (UNIT 9W: CR-66)  
727404G (UNIT 14W: MILSTEAD DR)  
727405N (UNIT 15W: ORANGE WOOD CIR)  
352294J (UNIT 22W: SLAB HILL RD)



LEGEND

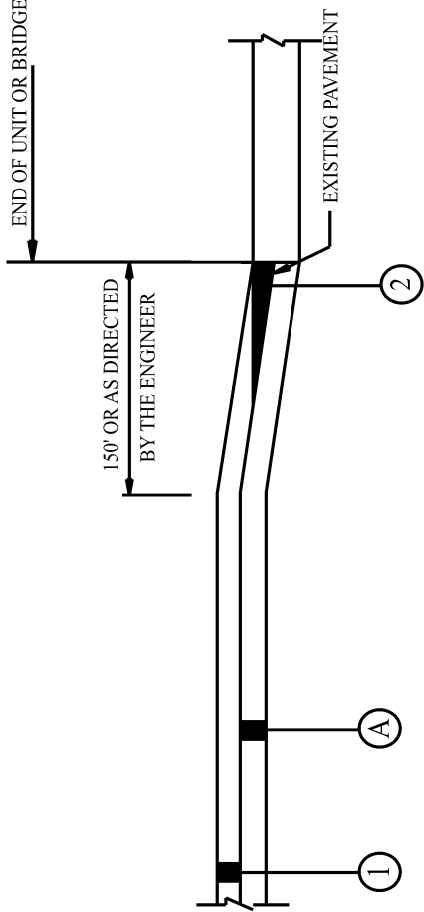
ITEM	UNIT	DESCRIPTION
① 424A-361	TON	REQ'D SUPERPAVE BITUMINOUS CONCRETE WEARING SURFACE LAYER, 3/4" MAXIMUM AGGREGATE SIZE MIX, ESAL RANGE C/D (185 LBS/SY)
② 408A-052	SQ YD	REQ'D PLANING EXISTING PAVEMENT, (APPROXIMATELY 1.10" THRU 2.0" THICK)
Ⓐ		IN-PLACE PAVEMENT RETAIN

NOT TO SCALE

PROJECT NUMBER	FISCAL YEAR	SHEET NO.	LAST SHEET
SCP 59-965-24 (WEST)	2024	2G	6

TYPICAL SECTION  
PROJECT NO. SCP 59-965-24 (WEST)  
SHELBY COUNTY

PROJECT NUMBER	FISCAL YEAR	SHEET NO.	LAST SHEET
SCP 59-965-24 (WEST)	2024	2H	6



SKETCH SHOWING PAVEMENT TIE AT BEGIN/END OF UNIT,  
AT BRIDGE ENDS AND RR X-ING

- EXISTING PAVEMENT TO BE REMOVED IN A SUFFICIENT  
AMOUNT TO ALLOW FOR FULL DEPTH OVERLAY. THIS  
WORK TO BE A SUBSIDIARY OBLIGATION OF THE  
OVERLYING LAYER AS DIRECTED BY THE ENGINEER.

LEGEND

ITEM	UNIT	DESCRIPTION
(1) 424A-361	TON	REQ'D SUPERPAVE BITUMINOUS CONCRETE WEARING SURFACE LAYER, 3/4" MAXIMUM AGGREGATE SIZE MIX, ESAL RANGE C/D (SEE SHEETS 2J-2K FOR APPLICATION RATES)
(A)		IN-PLACE PAVEMENT (PLANE AS REQUIRED)

NOT TO SCALE

PROJECT NUMBER	FISCAL YEAR	SHEET NO.	LAST SHEET
SCP 59-965-24 (WEST)	2024	2-1	6

APPROXIMATE LEVELING TOTALS – CR 26 CURVE								
STATION	EXISTING CROSS SLOPE		REQ'D CROSS SLOPE	LEVELING REQ'D			STATION TO STATION	ESTIMATED TONS
	W.B.	E.B.		LEOP	CL	REOP		
1+00	2.3%	2.0%	MATCH EXIST.	0.00"	0.00"	0.00"	0+00 TO 1+00	0.0
1+50	3.3%	1.9%	3.3%	0.00"	0.00"	2.25"	1+00 TO 1+50	5.1
2+00	4.0%	2.3%	4.0%	0.00"	0.00"	2.75"	1+50 TO 2+00	11.1
2+50	4.3%	2.0%	4.3%	0.00"	0.00"	3.75"	2+00 TO 2+50	14.5
3+00	4.8%	2.1%	4.8%	0.00"	0.00"	4.50"	2+50 TO 3+00	18.2
3+50	5.6%	3.0%	5.6%	0.00"	0.00"	4.50"	3+00 TO 3+50	19.2
4+00	5.3%	3.2%	5.3%	0.00"	0.00"	3.50"	3+50 TO 4+00	17.0
4+50	4.4%	2.3%	4.4%	0.00"	2.00"	3.50"	4+00 TO 4+50	21.7
4+75	3.8%	2.6%	3.8%	0.00"	2.00"	3.75"	4+50 TO 4+75	14.9
5+00	2.7%	1.2%	3.2%	0.00"	1.75"	5.00"	4+75 TO 5+00	17.1
5+25	3.0%	0.8%	3.0%	0.00"	0.00"	6.00"	5+00 TO 5+25	18.0
5+50	2.8%	0.6%	2.8%	0.00"	0.00"	5.00"	5+25 TO 5+50	14.3
6+00	2.7%	1.9%	1.9%	1.50"	0.00"	0.00"	5+50 TO 6+00	13.9
6+50	1.0%	0.3%	MATCH EXIST.	0.00"	0.00"	0.00"	6+00 TO 6+50	2.9
TOTAL ESTIMATED TONS:								188.0

Unit Descriptions				Reference Project No	Fiscal Year	Sheet No
County Named and Numbered Roads				SCP 59-965-24 (West)	2024	2J
Unit #	Name / Road #	Description	Length	Width	Comment	
			Ft	Ft		
#1W	CR-29 (Caldwell Mill Rd)	North from CR-17 (Valleydale Rd) to Heatherwood Dr.	7,234	24-60	Patch and Spot Level only	
#2W	CR-17 (Valleydale Rd)	North from CR-29 (Caldwell Mill Rd) to US-280	20,347	24-60	Patch and Spot Level only	
#3W	Copena Drive and Lecroy Lane	Indian Wood Forest Subdivision	1,750	24	Patch, Spot Level, Seal 110# ½" Mix	
#4W	CR-366 (Indian Crest Dr)	West off CR-29 (Caldwell Mill) to top of hill	100	12	Mill turn/thru lane full width, Seal 185# ¾" Mix on downhill section at CR-29, Restripe	
#5W	CR-275 (Old Montgomery Hwy)	From SR-261 north to joint south of Riverchase Parkway	3,415	22-50	Mill full width, Patch, Spot Level, Seal 185# ¾" Mix, Restripe	
#6W	CR-269 (Elvira Rd)	North off CR-52, west of Helena	5,500	18	Patch, "G" treat, Spot Level, Seal 165# ¾" Mix, Restripe	
#7W	CR-52 East	From US-31 East to I-65 (Restripe only)	3,440	36-60	Restripe only	
#8W	CR-95	North off CR-44 in Alabaster to CR-52 in Pelham at Tank Farm	17,753	22-36	Patch and Spot Level only	
#9W	CR-66 (Industrial Rd)	West off US-31 in Alabaster to CR-95	3,769	38-64	Mill full width, Patch, Spot Level, Seal 185# ¾" Mix, Restripe	
#10W	CR-44	East from CR-17 south of Helena (1st Ave W) to 9th St NW in Alabaster	9,161	22-36	Patch and Spot Level only	
#11W	CR-26	Repairs between Camp Branch Rd and just west of bridge over quarry in Saginaw	1,124	28	Level repair areas, Seal 185# ¾" Mix, Rescore centerline, Restripe	
#12W	Dogwood Circle	Loop south off CR-22 in Dogwood	495	13	Patch, "G" treat, Spot Level, Seal 165# ¾" Mix	
#13W	Old Buttermilk Road	West off CR-221 in Dogwood off CR-22	1,255	16	Patch, "G" treat, Spot Level, Seal 165# ¾" Mix, RR-Xing	
#14W	Milstead Drive	West off SR-25 in Calera to Orangewood Circle	649	12	"G" treat, Spot Level, Seal 165# ¾" Mix, RR-Xing	
#15W	Orangewood Circle	West off SR-25 north of Milstead Drive	2,949	12	"G" treat, Spot Level, Seal 165# ¾" Mix, RR-Xing	

Unit Descriptions					Reference Project No	Fiscal Year	Sheet No
County Named and Numbered Roads					SCP 59-964-24 (West)	2024	2K
Unit #	Name / Road #	Description	Length	Width	Comment		
			Ft	Ft			
#16W	CR-217 (Moreland Ln)	North from Bibb County line to SR-25	1,690	18	Patch, "G" treat, Spot Level, Seal 165# ¾" Mix, Restripe		
#17W	CR-200	South off SR-155 to roads end	3,367	16	Patch, "G" treat, Spot Level, Seal 165# ¾" Mix		
#18W	Forest Drive, Berry Lane & Gran Liebe Drive	East off SR-155 south of Montevallo	2,603	16-18	"G" treat, Spot Level, Seal 165# ¾" Mix, Stop Bar		
#19W	CR-20	East from Green Acres to SR-25	8,590	20	Patch, "G" treat, Spot Level, Seal 165# ¾" Mix, Restripe		
#20W	CR-4	Loop off US-31 south of Calera	4,085	16	Patch, "G" treat, Spot Level, Seal 165# ¾" Mix		
#21W	Bonnieville Drive	West off US-31 south of Calera (Back section from Shawnda Ln to dirt)	2,420	20	Patch, "G" treat, Spot Level, Seal 165# ¾" Mix, Restripe		
#22W	Slab Hill Road	East off US-31 just south of Calera	1,445	12	"G" treat, Spot Level, Seal 165# ¾" Mix, RR-Xing		
#23W	Pea Ridge Community Center Parking Lot	Between CR-10 and CR-54 in Pea Ridge	1,733 SY		Level 275# over widened areas, Seal 165# over Pea Ridge C.C. and church lots, restripe		
#24W	Shelby West Corporate Park	Loop off of Shelby West Pkwy, north of roundabout	11,950	24-36	Patch and Spot level only		



REFERENCE PROJECT NO	FISCAL YEAR	SHEET NO
SCP 59-965-24 (WEST)	2024	2L

**PROJECT NOTES**  
**PROJECT NO. SCP 59-965-24 (WEST)**  
**SHELBY COUNTY**

- 201: THE MINIMUM REQUIREMENTS FOR PAVING OF TURNOUTS SHALL BE AS FOLLOWS, UNLESS OTHERWISE DIRECTED BY PROJECT ENGINEER:
- a. CITY STREETS, COUNTY ROADS AND STATE HIGHWAYS--PAVE TO THE BACK OF RADIUS WITH JOINTS MILLED BY MILLING MACHINE FULL WIDTH AS DESIGNATED BY PROJECT ENGINEER.
  - b. BUSINESS DRIVEWAYS--PAVE TO THE BACK OF THE EXISTING SHOULDER.
  - c. ALL OTHER TURNOUTS--PAVE A MINIMUM OF 3'.
  - d. PARTICULAR ATTENTION WILL BE GIVEN TO THE SLOPE OF ALL DRIVES EITHER RESIDENTIAL OR COMMERCIAL TO ASSURE EASY PASSAGE ON AND OFF THE ROADWAY. IT WILL BE THE RESPONSIBILITY OF THE CONTRACTOR TO EITHER MAKE NECESSARY ADJUSTMENTS DURING ONGOING PHASES OF PAVING OPERATION OR ADJUST AT A LATER DATE AS DIRECTED BY THE PROJECT ENGINEER.
- 202: RESURFACING OVERLAYS SHALL MATCH EXISTING SUPERELEVATION OF HORIZONTAL CURVE.
- 203: ALL SHOULDERS ON ALL UNITS SHALL BE CLIPPED AND BROOMED TO THE ENGINEER'S SATISFACTION PRIOR TO ANY AND ALL RESURFACING.
- 204: ALL EXCESS STONE WILL BE THE RESPONSIBILITY OF THE CONTRACTOR TO REMOVE FROM INTERSECTIONS, PARKING LOTS, DRIVEWAYS, AND ALL PUBLIC PROPERTIES. ALL EXCESS STONE SHALL BE REMOVED DAILY, UNLESS OTHERWISE DIRECTED BY THE PROJECT ENGINEER.
- 205: ALL SUBDIVISION UNIT TRUCK LOAD LIMITS SHALL BE IN ACCORDANCE WITH SHELBY COUNTY, TRUCK WEIGHT ORDINANCE (9 TONS PER AXLE). TRUCK WEIGHTS MAY BE RESTRICTED ON OTHER UNITS AT SHELBY COUNTY'S DISCRETION.
- 206: ITEM 424B-658, BITUMINOUS CONCRETE PLANT MIX, LEVELING ¾" MAX ESAL C/D SHALL BE APPLIED AS DIRECTED BY THE PROJECT ENGINEER.
- 207: CONTRACTOR SHALL TIE BEGINNING AND ENDING OF PROJECT AND AT BRIDGE CROSSINGS AS SHOWN IN THE SKETCH ON SHEET 2H.
- 208: MOBILIZATION AND CONSTRUCTION FUEL SHALL BE SUBSIDIARY OBLIGATION OF THE CONTRACT.
- 209: EXCESS MATERIAL THAT CANNOT BE USED TO FLUSH SLOPES WITHIN A PROJECT AREA SHALL BE WASTED AS DIRECTED BY THE PROJECT ENGINEER.
- 210: CONTRACTOR IS ULTIMATELY RESPONSIBLE FOR THE CONTINUOUS AND PROPER OPERATION OF ALL EXISTING UTILITIES. THE COUNTY SHALL COORDINATE RELOCATION OF UTILITIES WITH THE AFFECTED UTILITY COMPANIES.
- 211: CONTRACTOR IS RESPONSIBLE FOR MAKING CONTACT WITH LOCAL WATER AUTHORITIES AND OBTAINING PERMISSION OR A METER WITH WHICH TO ACQUIRE WATER FOR USE DURING THE PROJECT.
- 212: BASE LAYER COMPACTION SHALL MEET 100% OF THE MAXIMUM THEORETICAL DENSITY OF THE MATERIAL SPECIFIED TO THE SATISFACTION OF THE COUNTY ENGINEER.
- 213: ITEM 405A-000 SHALL BE MECHANICALLY APPLIED TO ACHIEVE UNIFORM DISTRIBUTION. HAND APPLICATION WILL BE ALLOWED ONLY ON TURNOUTS AND INTERSECTIONS.
- 214: UNITS #5W (CR-275) & #9W (CR-66) ARE DESIGNATED AS REBUILD ALABAMA ACT UNITS. THE CONTRACTOR SHALL INSTALL REBUILD ALABAMA SIGNAGE AT EACH END OF THE APPLICABLE UNITS PRIOR TO CONSTRUCTION. DETAILS AND SPECIFICATIONS ON THE REQUIRED SIGN RA-1 ARE INCLUDED ON THE ALDOT STANDARD DRAWING SHS-10, INDEX 71069. THE COST FOR THE PROCUREMENT AND INSTALLATION OF THESE SIGNS IS SUBSIDIARY TO THE CONTRACT.
- 215: ANY MAILBOX RESETS REQUIRED TO COMPLETE THE WORK IN THIS CONTRACT SHALL BE PERFORMED BY THE CONTRACTOR AND IS A SUBSIDIARY OBLIGATION OF THE CONTRACT.
- 216: ANY ROADWAYS WITH A TOTAL WIDTH OF LESS THAN 20' SHALL BE PAVED USING A MATERIAL STRIKE OFF PLATE.

REFERENCE PROJECT NO	FISCAL YEAR	SHEET NO
SCP 59-965-24 (WEST)	2024	2M

# PROJECT NOTES PROJECT NO. SCP 59-965-24 (WEST) SHELBY COUNTY

- 217: IT SHALL BE THE CONTRACTOR'S RESPONSIBILITY TO INVENTORY ALL IN-PLACE STRIPING, MARKINGS AND LEGENDS AND REFERENCE THE LOCATIONS, SO THAT ALL REQUIRED STRIPING, MARKINGS AND LEGENDS SHALL BE PLACED BACK IN THE SAME LOCATIONS AS THEY WERE BEFORE RESURFACING OPERATIONS BEGAN. THE WORK INVOLVED IN INVENTORING AND REFERENCING SHALL BE A SUBSIDIARY OBLIGATION OF ITEM 701A-230. IF IN-PLACE STRIPING, MARKINGS AND LEGENDS DIFFER FROM REQUIREMENTS ON STANDARD DRAWINGS OR MUTCD, THE PROJECT ENGINEER SHALL BE NOTIFIED BEFORE WORK BEGINS.
- 218: ALL PATCHING SHALL BE IN ACCORDANCE WITH ITEM 410.03(c) AND SUBARTICLE 410.09(a) AND COMPLETED PRIOR TO RESURFACING. PATCHES SHALL BE A MINIMUM WIDTH OF 7'-0" AND MINIMUM DEPTH OF 4". THE EXACT LOCATION, WIDTH, LENGTH AND DEPTH SHALL BE DETERMINED BY THE ENGINEER.
- 219: IF A DROP OFF OCCURS IN A TRANSVERSE DIRECTION DURING THE CONSTRUCTION OF THIS PROJECT, THE CONTRACTOR SHALL CONSTRUCT A TEMPORARY BITUMINOUS WEDGE AS DIRECTED BY THE ENGINEER. THE WORK, IF REQUIRED, SHALL BE PAID FOR AS ITEM 424A-340 OR 424A-361 DEPENDING UPON LOCATION OF WEDGE.
- 220: TEMPORARY TRAFFIC CONTROL MARKINGS SHALL BE USED FOR STOP LINES ONLY. 4 INCH TEMPORARY STRIPE SHALL BE USED FOR A TEMPORARY CHANNELIZING STRIPE AS DIRECTED BY THE ENGINEER.
- 221: ANY DAMAGE TO IN-PLACE PAVING, CURB AND GUTTER, SIDEWALK, GRASSING ETC. SHALL BE REPAIRED BY THE CONTRACTOR TO THE SATISFACTION OF THE ENGINEER AT NO COST TO THE PROJECT.
- 222: ANY MANHOLE OR UTILITY RESETS NECESSARY TO COMPLETE THE WORK SHALL BE PERFORMED BY THE CONTRACTOR. THE COST OF THIS WORK SHALL BE A SUBSIDIARY OBLIGATION OF THE CONTRACT.
- 223: REMOVAL OF PAVEMENT MARKERS PRIOR TO RESURFACING SHALL BE PERFORMED BY THE CONTRACTOR. THE COST OF THIS WORK SHALL BE A SUBSIDIARY OBLIGATION OF THE CONTRACT.
- 224: THE PRIME CONTRACTOR SHALL INSTALL A MINIMUM OF 70% OF THE TOTAL TONNAGE REQUIRED FOR ITEMS 424A-340 AND 424A-361 UNLESS OTHERWISE APPROVED BY THE SHELBY COUNTY ENGINEER.
- 225: ALL FINAL STRIPING SHALL BE INSTALLED WITH A SHELBY COUNTY INSPECTOR ON SITE.
- 226: THE CONTRACTOR WILL HAVE 15 WORKING DAYS AFTER THE CURING PERIOD TO INSTALL PERMANENT TRAFFIC STRIPE AND PAVEMENT MARKERS. IF THESE ITEMS ARE NOT INSTALLED WITHIN 15 WORKING DAYS AFTER THE CURING PERIOD, THE CONTRACTOR SHALL BE RESPONSIBLE FOR APPLYING TEMPORARY APPLICATIONS EVERY MONTH UNTIL THE PERMANENT STRIPE IS COMPLETE. THIS NOTE SHALL ONLY APPLY TO UNITS 5W (CR-275) AND 9W (CR-66).
- 227: UNITS 1W (CR-29), 2W (CR-17), 5W (CR-275), 8W (CR-95), 9W (CR-66), 10W (CR-44), & 11W (CR-26) SHOULD BE CONSIDERED FOR POSSIBLE NIGHT WORK DUE TO TRAFFIC VOLUMES.
- 228: THE CONTRACTOR SHALL PROVIDE AN OFF-DUTY POLICE OFFICER ON SITE FOR TRAFFIC CONTROL WHEN WORKING AT NIGHT. ANY ADDITIONAL COSTS ASSOCIATED WITH NIGHT WORK INCLUDING, BUT NOT LIMITED TO SIGNS, LIGHTS, POLICE OFFICERS, ETC. SHALL BE THE RESPONSIBILITY OF THE CONTRACTOR AND SHALL BE CONSIDERED A SUBSIDIARY OBLIGATION OF THE CONTRACT. THE CONTRACTOR SHALL NOTIFY THE SHELBY COUNTY HIGHWAY DEPARTMENT A MINIMUM OF ONE MONTH IN ADVANCE OF ANY NIGHT WORK.
- 229: UNITS 1W (CR-29), 2W (CR-17), 5W (CR-275), 8W (CR-95), 9W (CR-66), 10W (CR-44), & 11W (CR-26) SHALL HAVE NO LANE CLOSURES ALLOWED BETWEEN THE HOURS OF 7:00-8:30 AM OR 4:00-6:00 PM UNLESS OTHERWISE DIRECTED BY THE PROJECT ENGINEER.
- 230: NO SECTION OF PAVEMENT SHALL BE LEFT OVERNIGHT WITHOUT TRAFFIC STRIPING OR RAILROAD MARKINGS BEING IN PLACE. THIS INCLUDES BITUMINOUS TREATMENT "G" AND FINAL WEARING LAYER.
- 231: ALL PERMANENT STRIPING INCLUDING HANDICAP SPACES FOR UNIT 23W (PEA RIDGE C.C. PARKING LOT) SHALL BE PAID FOR AS 701G-009 SOLID WHITE, CLASS I, TYPE A TRAFFIC STRIPE.
- 232: THE CONTRACTOR SHALL COMPLETE THE ENTIRE PROJECT BY OCTOBER 18, 2024.

REFERENCE PROJECT NO	FISCAL YEAR	SHEET NO
SCP 59-965-24 (WEST)	2024	2N

# TRAFFIC CONTROL NOTES PROJECT NO. SCP 59-965-24 (WEST) SHELBY COUNTY

700. THE TRAFFIC CONTROL PLAN IS DEVELOPED IN CONFORMANCE WITH THE MANUAL ON UNIFORM TRAFFIC CONTROL DEVICES PART 6, 2009 EDITION. THE TRAFFIC CONTROL DEVICES INDICATED REPRESENT CONDITIONS KNOWN DURING PLAN DEVELOPMENT. IN THE EVENT ACTUAL PHYSICAL CONDITIONS WARRANT ADDITIONAL TRAFFIC CONTROL DEVICES, THEY SHALL BE INSTALLED IN CONFORMANCE WITH THE MUTCD PART 6 AS DIRECTED BY THE ENGINEER. COST SHALL BE PAID FOR AS A SUBSIDIARY OBLIGATION.
701. THE CONTRACTOR WILL BE PERMITTED TO DEVELOP HIS OWN TRAFFIC CONTROL PLAN TO BE USED IN LIEU OF THIS TRAFFIC CONTROL PLAN IF APPROVED BY THE ENGINEER. A CONTRACTOR DEVELOPED TRAFFIC CONTROL PLAN SHALL BE A SUBSIDIARY COST OF THE CONTRACT.
702. THE CONTRACTOR SHALL ENSURE THAT ALL TRAFFIC CONTROL DEVICES ARE PLACED AS REQUIRED IN THE TRAFFIC CONTROL PLANS AND ARE IN SERVICEABLE CONDITION AT ALL TIMES.
703. ALL SIGNS AND BARRICADES MAY BE ADJUSTED BY THE ENGINEER FOR THE SAFETY OF THE TRAVELING PUBLIC WHEN NECESSARY.
704. ADDITIONAL SIGNS MAY BE REQUIRED IF DEEMED NECESSARY BY THE ENGINEER. ADDITIONAL ITEMS TO BE A SUBSIDIARY COST OF THE CONTRACT.
705. NO DIRECT PAYMENT WILL BE MADE FOR REMOVING, RELOCATING, OR COVERING OF IN PLACE SIGNS, BARRELS, BARRICADES, OR OTHER TRAFFIC CONTROL DEVICES AS REQUIRED IN THIS TRAFFIC CONTROL PLAN (SEE SPECIAL DRAWING NO. TCD-100 IN THE ALABAMA DEPARTMENT OF TRANSPORTATION'S SPECIAL AND STANDARD HIGHWAY DRAWINGS, 2024 EDITION). COST TO BE A SUBSIDIARY OBLIGATION OF THE CONTRACT.
706. THE QUANTITIES SHOWN ON THE TRAFFIC CONTROL PLAN SHEET ARE CONSIDERED TO BE THE MINIMUM REQUIREMENT FOR HANDLING TRAFFIC AT ANY GIVE TIME DURING CONSTRUCTION.
707. THE CONTRACTOR IS TO REMOVE, RELOCATE, OR COVER DURING CONSTRUCTION AND THEN RESET OR UNCOVER UPON COMPLETION OF A PARTICULAR SECTION ANY CONFLICTING IN-PLACE ROADWAY SIGNS AS DIRECTED BY THE ENGINEER. COST TO BE A SUBSIDIARY OBLIGATION OF THE CONTRACT.
708. ALL CONSTRUCTION SIGNS PLACED BEFORE WORK BEGINS SHALL BE COVERED WITH BLACK PLASTIC OR SOME OTHER SUITABLE MATERIAL SO THAT THE SIGNS ARE NOT VISIBLE UNTIL WORK IS IN PROGRESS.
709. ALL TRAFFIC CONTROL DEVICES SHALL BE A SUBSIDIARY COST OF THE CONTRACT.
710. ALL BLACK ON ORANGE CONSTRUCTION SIGNS SHALL BE FABRICATED USING TYPES IV OR VIII FLUORESCENT ORANGE REFLECTIVE SHEETING MATERIAL FOR THE SIGN BACKGROUND.
711. DURING NON-WORKING HOURS NO EQUIPMENT OR MATERIAL SHALL BE PARKED OR STORED CLOSER THAN 30 FEET TO THE EDGE OF ANY ROADWAY CARRYING TRAFFIC. WHEN THIS IS NOT PRACTICAL, IT SHALL BE PLACED IN AN AREA APPROVED BY THE ENGINEER AND DELINEATED BY REFLECTORIZED DRUMS. THIS INCLUDES STORAGE OF TRAFFIC CONTROL DEVICES SUCH AS TRAILER MOUNTED OR OTHER TEMPORARY SIGNS, BARRICADES, DRUMS, ETC., WHICH ARE NOT IN USE DURING NON-WORKING HOURS. THESE ARE TO BE FURNISHED BY THE CONTRACTOR WITHOUT COST TO SHELBY COUNTY.

REFERENCE PROJECT NO	FISCAL YEAR	SHEET NO
SCP 59-965-24 (WEST)	2024	2-0

# TRAFFIC CONTROL NOTES PROJECT NO. SCP 59-965-24 (WEST) SHELBY COUNTY

- 712: WHERE THE LOCATION OF A REQUIRED SIGN FALLS IN A DRIVEWAY, SIDEWALK, BRIDGE, ETC., OR WHERE THE VISIBILITY OF A SIGN IS LIMITED TO THE TRAVELING PUBLIC, THE LOCATION SHALL BE ADJUSTED AS DIRECTED BY THE ENGINEER.
- 713: THE CONTRACTOR SHALL PLACE ALL ADVANCE WARNING SIGNS BEFORE PROCEEDING WITH THIS WORK.
- 714: ALL VEHICLES, EQUIPMENT, PERSONNEL (EXCEPT FLAGGERS), AND THEIR ACTIVITIES, ARE RESTRICTED AT ALL TIMES TO ONE SIDE OF THE PAVEMENT UNLESS OTHERWISE AUTHORIZED BY THE ENGINEER.
- 715: CONTRACTOR SHALL MAINTAIN AT LEAST ONE ACCESS TO BUSINESSES AND RESIDENCES DURING ALL PHASES OF CONSTRUCTION.
- 716: CONSTRUCTION SIGNS MOUNTED ON TEMPORARY SUPPORTS SHALL BE MOUNTED AT A MINIMUM HEIGHT OF 5 FEET.
- 717: FLAGGERS SHALL BE PROPERLY ATTIRED, EQUIPPED WITH STAFF MOUNTED STOP/SLOW PADDLES IN SIGHT OF EACH OTHER OR HAVE DIRECT COMMUNICATION AT ALL TIMES. FLAGGER STATION LOCATION MAY BE VARIED FROM THOSE SHOWN BASED ON ROADWAY CONDITIONS AT THE TIME OF THE LANE CLOSURE.
- 718: FLAGGERS ARE TO BE USED WHEN DIRECTED BY THE ENGINEER. SIGNS SHALL BE PLACED AT THE APPROPRIATE TIME AND SHALL BE COVERED OR REMOVED WHEN FLAGGERS ARE NOT ON DUTY AND DURING NON-WORKING HOURS.
- 719: FOR MOVING OPERATIONS, THE TRAFFIC CONES MAY BE DELETED IF THE FLAGGERS ARE IN SIGHT OF EACH OTHER OR IF A PILOT CAR IS USED ON A TWO LANE ROADWAY.
- 720: DURING THE WIDENING OR RESURFACING OF ANY ROADWAY CARRYING TRAFFIC, THE CONTRACTOR SHALL ADVISE THE MOTORISTS OF ANY EDGE OF PAVEMENT DROP-OFFS 3 INCHES OF GREATER BY PLACING SHOULDER DROP-OFF SIGNS EVERY 1/2 MILE BEGINNING PRIOR TO THE WIDENING OR RESURFACING. REQUIRED SHOULDER WORK TO ELIMINATE THE DROP-OFFS SHALL BE PURSUED IN AN EXPEDITIOUS MANNER FOLLOWING THE WIDENING AND OR RESURFACING.
- 721: DURING THE WIDENING OR RESURFACING OF ANY ROADWAY CARRYING TRAFFIC, THE CONSTRUCTION ZONE SHALL NOT BE LONGER THAN 2 MILES AT ANY GIVEN TIME.

SUMMARY OF QUANTITIES				
SCP 59-965-24 (West)				
Pay Item	Unit	Quantity	Description	
401B-111	Sq. Yd.	66,695	Bituminous Treatment "G", CRS-2 (With Polymer Additive)	
405A-000	Gal	6,972	Tack Coat	
408A-052	Sq.Yd	32,883	Planing Existing Pavement (Approximately 1.10" thru 2.0")	
410H-000	Each	2	Material Remixing Device	
424A-340	Ton	407	Bituminous Concrete Wearing Surface Layer, ½" Max Agg., ESAL A/B	
424A-361	Ton	8,548	Bituminous Concrete Wearing Surface Layer, ¾" Max Agg., ESAL C/D	
424A-370	Ton	545	Bituminous Concrete Wearing Surface Layer, Widening, ¾" Max Agg., ESAL C/D	
424B-656	Ton	3,675	Bituminous Concrete Upper Binder Layer, Patching, 1½" Max Agg, ESAL C/D	
424B-658	Ton	3,300	Bituminous Concrete Upper Binder Layer, Leveling, ¾" Max Agg, ESAL C/D	
428E-000	Lin. Ft.	700	Scoring Bituminous Pavement Surface By Cutting	
701A-007	Mile	2	Solid White, Class 1, Type A Traffic Stripe (5" Wide)	
701A-012	Mile	5	Solid Yellow, Class 1, Type A Traffic Stripe	
701A-016	Mile	2	Solid Yellow, Class 1, Type A Traffic Stripe (5" Wide)	
701A-227	Mile	12	Solid White, Class 2, Type A Traffic Stripe (5" Wide)	
701A-230	Mile	12	Solid Yellow, Class 2, Type A Traffic Stripe (5" Wide)	
701A-239	Mile	2	Broken White, Class 2, Type A Traffic Stripe (5" Wide)	
701A-244	Mile	2	Broken Yellow, Class 2, Type A Traffic Stripe (5" Wide)	
701B-000	Lin. Ft.	186	Dotted Class 1, Type A Traffic Stripe	
701B-207	Lin. Ft.	2,730	Dotted, Class 2, Type A Traffic Stripe (5" Wide)	
701C-002	Mile	4	Broken Temporary Traffic Stripe (Paint)	
701C-003	Mile	34	Solid Temporary Traffic Stripe (Paint)	
701G-009	Lin. Ft.	1,200	Solid White, Class 1, Type A Traffic Stripe	
701G-142	Lin. Ft.	577	Broken White, Class W, Type A Traffic Stripe (5" Wide)	
701G-146	Lin. Ft.	2,008	Solid White, Class W, Type A Traffic Stripe (5" Wide)	
701G-154	Lin. Ft.	1,010	Solid Yellow, Class W, Type A Traffic Stripe (5" Wide)	
701H-002	Lin. Ft.	3,018	Solid Traffic Stripe Removed (Tape)	
703A-002	Sq. Ft.	7,083	Traffic Control Markings, Class 2, Type A	
703A-011	Sq. Ft.	250	Traffic Control Markings, Class W, Type A	
703B-002	Sq. Ft.	1,695	Traffic Control Legends, Class 2, Type A	
703D-002	Sq. Ft.	3,666	Temporary Traffic Control Markings (Paint)	
705A-030	Each	230	Pavement Markers, Class A-H, Type 2-C	
705A-032	Each	522	Pavement Markers, Class A-H, Type 1-B	
705A-037	Each	666	Pavement Markers, Class A-H, Type 2-D	
705A-038	Each	547	Pavement Markers, Class A-H, Type 2-E	
730H-001	Lin. Ft.	1,235	Loop Wire	
742A-001	Each	4	Portable Changeable Message Sign, Type 2	

SUMMARY OF QUANTITIES										Reference Project No		Fiscal Year				Sheet No					
										SCP 59-965-24 (West)				2024				3A			
Required Asphalt Resurfacing																					
Unit #	Road # or Name	401B-111 Bituminous Treatment Type "G", CRS-2 (With Polymer Additive)	405A-000 Tack Coat	408A-052 Planing Existing Pavement	410H-000 Material Remixing Device	424A-340 Bituminous Wearing Surface 1/2" Max Agg. ESAL A/B	424A-361 Bituminous Wearing Surface 3/4" Max Agg. ESAL C/D	424A-370 Bituminous Wearing Surface (Widening) 3/2" Max Agg. ESAL C/D	424B-656 Bituminous Upper Binder Layer (Patching) 1 1/2" Max Agg. ESAL C/D	424B-658 Bituminous Upper Binder Layer (Leveling) 3/4" Max Agg. ESAL C/D	428E-000 Scoring Bituminous Pavement Surface By Cutting										
		Sq Yd	Gal	Sq Yd	Each	Ton	Ton	Ton	Ton	Ton	Lin Ft										
#1W	CR-29 (Caldwell Mill Road)		500						500	300											
#2W	CR-17 (Valleydale Road)		300						300	300											
#3W	Copena Dr & Lecroy Ln		450			257			50	50											
#4W	CR-366 (Indian Crest Dr)		20	134			25														
#5W	CR-275 (Old Montgomery Hwy)		1,061	11,790	1		883	210	100	100											
#6W	CR-269 (Elvira Road)	11,000	350				908		700	100											
#7W	CR-52 East (Restripe only)																				
#8W	CR-95		600						450	700											
#9W	CR-66 (Industrial Rd)		1,886	20,959	1		1,836	110	200	150											
#10W	CR-44		600						800	400											
#11W	CR-26		500				300			350	700										
#12W	Dogwood Circle	715	25				59		25	25											
#13W	Old Buttermilk Road	2,231	20				184			50											
#14W	Milstead Drive	865	20				71			25											
#15W	Orangewood Circle	3,932	20				324			100											
#16W	CR-217 (Moreland Lane)	3,380	50				279	25	25	25											
#17W	CR-200	5,986	50				494			25											
#18W	Forest Dr, Berry Ln & Gran Liebe Dr	4,930	50				407			125											
#19W	CR-20	19,089	200				1,575	200	225	100											
#20W	CR-4	7,262	50				600	25	100	50											
#21W	Bonnieville Drive	5,378	50				444		50	125											
#22W	Slabhill Road	1,927	20				159	25	25	50											
#23W	Pea Ridge C.C. Parking Lot		150			150				50											
#24W	Shelby West Corporate Park							100		100											
	Totals:	66,695	6,972	32,883	2	407	8,548	545	3,675	3,300	700										

Required Asphalt Resurfacing												Reference Project No		Fiscal Year			Sheet No			
												SCP 59-965-24 (West)			2024			3A		
Unit #	Road # or Name	401B-111 Bituminous Treatment Type "G", CRS-2 (With Polymer Additive)	405A-000 Tack Coat	408A-052 Planing Existing Pavement	410H-000 Material Remixing Device	424A-340 Bituminous Wearing Surface 1/2" Max Agg. ESAL A/B	424A-361 Bituminous Wearing Surface 3/4" Max Agg. ESAL C/D	424A-370 Bituminous Wearing Surface (Widening) 3/4" Max Agg. ESAL C/D	424B-656 Bituminous Upper Binder Layer (Patching) 1 1/2" Max Agg. ESAL C/D	424B-658 Bituminous Upper Binder Layer (Leveling) 3/4" Max Agg. ESAL C/D	428E-000 Scoring Bituminous Pavement Surface By Cutting									
		SqYd	Gal	SqYd	Each	Ton	Ton	Ton	Ton	Ton	Lin Ft									
#1W	CR-29 (Caldwell Mill Road)		500						500	300										
#2W	CR-17 (Valleydale Road)		300						300	300										
#3W	Copena Dr & Lecroy Ln		450			257			50	50										
#4W	CR-366 (Indian Crest Dr)		20	134			25													
#5W	CR-275 (Old Montgomery Hwy)		1,061	11,790	1		883	210	100	100										
#6W	CR-269 (Elvira Road)	11,000	350				908		700	100										
#7W	CR-52 East (Restripe only)																			
#8W	CR-95		600						450	700										
#9W	CR-66 (Industrial Rd)		1,886	20,959	1		1,836	110	200	150										
#10W	CR-44		600						800	400										
#11W	CR-26		500				300			350	700									
#12W	Dogwood Circle	715	25				59		25	25										
#13W	Old Buttermilk Road	2,231	20				184			50										
#14W	Milstead Drive	865	20				71			25										
#15W	Orangewood Circle	3,932	20				324			100										
#16W	CR-217 (Moreland Lane)	3,380	50				279		25	25										
#17W	CR-200	5,986	50				494		25											
#18W	Forest Dr, Berry Ln & Gran Liebe Dr	4,930	50				407			125										
#19W	CR-20	19,089	200				1,575	200	225	100										
#20W	CR-4	7,262	50				600	25	100	50										
#21W	Bonnieville Drive	5,378	50				444		50	125										
#22W	Slabhill Road	1,927	20				159		25	50										
#23W	Pea Ridge C.C. Parking Lot		150			150				50										
#24W	Shelby West Corporate Park								100	100										
	Totals:	66,695	6,972	32,883	2	407	8,548	545	3,675	3,300	700									

SUMMARY OF QUANTITIES													
Required Temporary and Permanent Traffic Stripe													
		701A-007	701A-012	701A-016	701A-227	701A-230	701A-239	701A-244	701B-000	701B-207	701C-002	701C-003	701G-009
Unit #	Road # or Name	Solid White, Class 1, Type A Traffic Stripe (5" Wide)	Solid Yellow, Class 1, Type A Traffic Stripe	Solid Yellow, Class 1, Type A Traffic Stripe (5" Wide)	Solid White, Class 2, Type A Traffic Stripe (5" Wide)	Solid Yellow, Class 2, Type A Traffic Stripe (5" Wide)	Broken White, Class 2, Type A Traffic Stripe (5" Wide)	Broken Yellow, Class 2, Type A Traffic Stripe (5" Wide)	Dotted, Class 1, Type A Traffic Stripe	Dotted Class 2, Type A Traffic Stripe (5" Wide)	Broken Temporary Traffic Stripe (Paint)	Solid Temporary Traffic Stripe (Paint)	Solid White, Class 1, Type A Traffic Stripe
		Mile	Mile	Mile	Mile	Mile	Mile	Mile	Lin Ft	Lin Ft	Mile	Mile	Lin Ft
#1W	CR-29 (Caldwell Mill Road)				1	1		1		500	2	4	
#2W	CR-17 (Valleydale Road)				1	1						1	
#3W	Copena Dr & Lecroy Ln												
#4W	CR-366 (Indian Crest Dr)				1	1						1	
#5W	CR-275 (Old Montgomery Hwy)				2	2				482		8	
#6W	CR-269 (Elvira Road)		3									5	
#7W	CR-52 East (Restripe Only)				2	2	1			678			
#8W	CR-95				1	1						1	
#9W	CR-66 (Industrial Rd)				2	2	1	1		1,070	2	4	
#10W	CR-44				1	1						1	
#11W	CR-26				1	1						1	
#12W	Dogwood Circle												
#13W	Old Buttermilk Road												
#14W	Milstead Drive												
#15W	Orangewood Circle												
#16W	CR-217 (Moreland Lane)		1									1	
#17W	CR-200												
#18W	Forest Dr, Berry Ln & Gran Liebe Dr												
#19W	CR-20	2		2					186			7	
#20W	CR-4												
#21W	Bonnieville Drive												
#22W	Slabhill Road												
#23W	Pea Ridge C.C. Parking Lot												1,200
#24W	Shelby West Corporate Park		1										
	Totals:	2	5	2	12	12	2	2	186	2,730	4	34	1,200

SUMMARY OF QUANTITIES															
Required Class W Stripe, Traffic Control Markings and Pavement Markers															
		701G-142	701G-146	701G-154	701H-002	703A-002	703A-011	703B-002	703D-002	705A-030	705A-032	705A-037	705A-038	730H-001	742A-001
Unit #	Road # or Name	Broken White, Class W, Type A Traffic Stripe (5" Wide)	Solid White, Class W, Type A Traffic Stripe (5" Wide)	Solid Yellow, Class W, Type A Traffic Stripe (5" Wide)	Solid Traffic Stripe Removed (Tape)	Traffic Control Markings, Class 2, Type A	Traffic Control Markings, Class W, Type A	Traffic Control Legends, Class 2, Type A	Temporary Traffic Control Markings (Paint)	Pavement Markers, Class A-H, Type 2-C	Pavement Markers, Class A-H, Type 1-B	Pavement Markers, Class A-H, Type 2-D	Pavement Markers, Class A-H, Type 2-E	Loop Wire	Portable Changeable Message Signs, Type 2
		Lin Ft	Lin Ft	Lin Ft	Lin Ft	Sq Ft	Sq Ft	Sq Ft	Sq Ft	Each	Each	Each	Each	Lin Ft	Each
#1W	CR-29 (Caldwell Mill Road)					200		200	200						
#2W	CR-17 (Valleydale Road)														
#3W	Copena Dr & Leeroy Ln														
#4W	CR-366 (Indian Crest Dr)					150		23	120					588	
#5W	CR-275 (Old Montgomery Hwy)					451		68	314	18	116	73	55		2
#6W	CR-269 (Elvira Road)					36			72			138			
#7W	CR-52 East (Restripe Only)	577	2,008	1,010	3,018	2,250	250	269		54	400	42	231		
#8W	CR-95					100			50					78	
#9W	CR-66 (Industrial Rd)					2,504		769	2,000	28		188			2
#10W	CR-44					100			50					569	
#11W	CR-26														
#12W	Dogwood Circle														
#13W	Old Buttermilk Road														
#14W	Milstead Drive					36		69	72						
#15W	Orangewood Circle					72		137	144						
#16W	CR-217 (Moreland Lane)											10			
#17W	CR-200														
#18W	Forest Dr, Berry Ln & Gran Liebe Dr					40									
#19W	CR-20					1,000		23	500	130	6	215	261		
#20W	CR-4														
#21W	Bonnieville Drive														
#22W	Slabhill Road					144		137	144						
#23W	Pea Ridge C.C. Parking Lot														
#24W	Shelby West Corporate Park														
	Totals:	577	2,008	1,010	3,018	7,083	250	1,695	3,666	230	522	666	547	1,235	4



REFERENCE PROJECT NO	FISCAL YEAR	SHEET NO
SCP 59-965-24 (WEST)	2024	3D

**REQUIRED TRAFFIC SIGNAL LOOP DETECTOR INSTALLATION**

Intersection	730H-001	Special or Standard Drawing	Comments
	Loop Wire		
	LIN FT		
CR-95 at CR-58	78	A	1 - 6'X6' Pulse Loop (SB)
CR-44 at 10th St SW	569	A	2 - 6'x50' Presence Loops (EB & WB)
CR-366 (Indian Crest Dr) at CR-29	588	A	1 - 6'x50' Presence Loop (EB)
<b>TOTAL</b>	<b>1,235</b>		

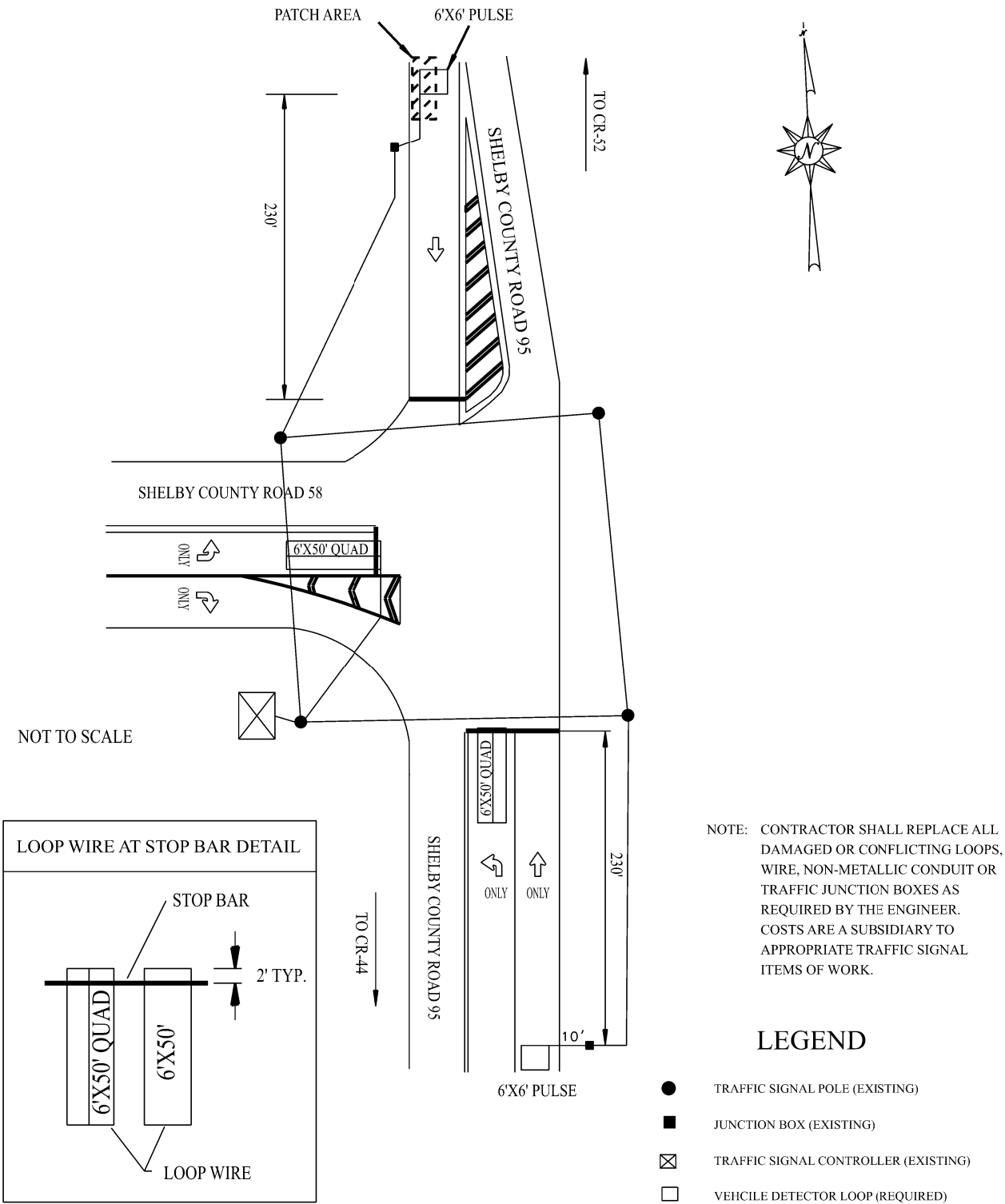
**Legend**

A	Special Drawing No.	Index No.
	T.S.D.-730- 11	73036

REFERENCE PROJECT NO	FISCAL YEAR	SHEET NO
SCP 59-965-24 (WEST)	2024	3E

TRAFFIC SIGNAL LAYOUT

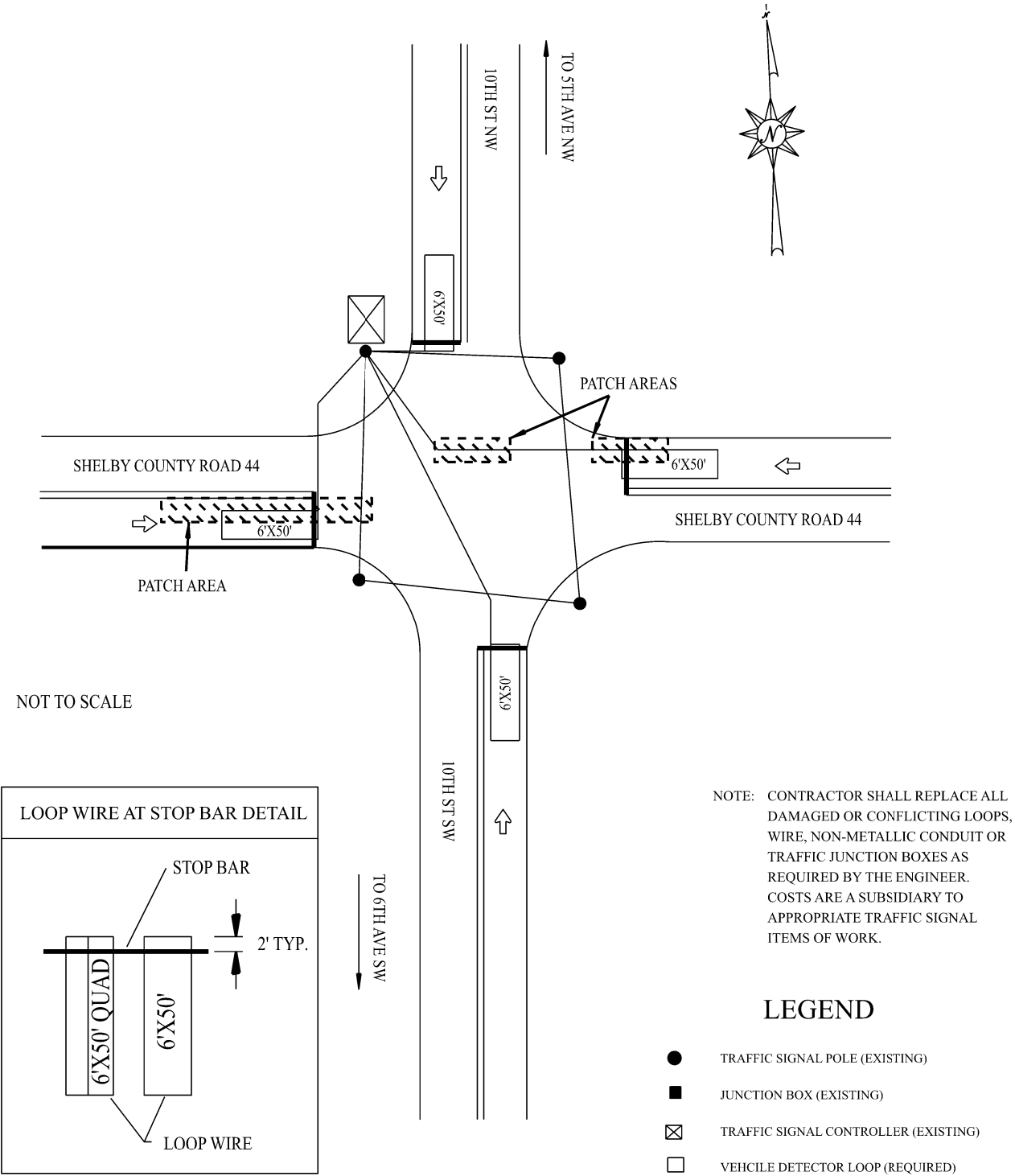
CR-95 @ CR-58



REFERENCE PROJECT NO	FISCAL YEAR	SHEET NO
SCP 59-965-24 (WEST)	2024	3F

# TRAFFIC SIGNAL LAYOUT

## CR-44 @ 10th St SW



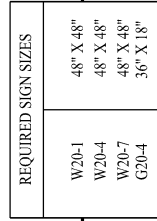


REFERENCE PROJECT NO  
SCP 59-965-24 (WEST)





SHEET NO

---

4



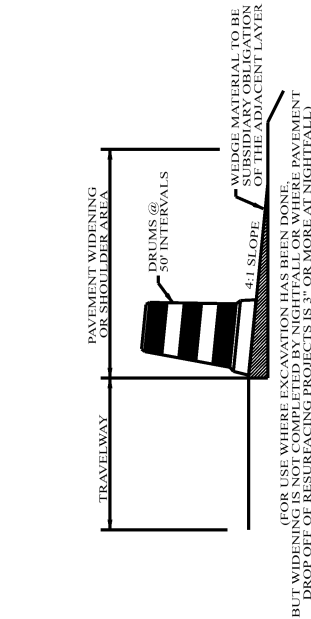
LEGEND

	TEMPORARY MOUNTED SIGN
	POST MOUNTED SIGN
	CONE WITH BALAST
	FLAGGER

DESIGN BUREAU SPECIAL DRAWING	
DETAILS FOR TRAFFIC CONTROL FOR RESURFACING TWO LANE HIGHWAYS	
DRAWN BY: _____	SPECIAL PROJECT DETAIL
DATE DRAWN: _____	
SHEET TITLE	ROUTE
	VARIOUS
LE	

# TEMPORARY TRAFFIC CONTROL PLAN SHEET

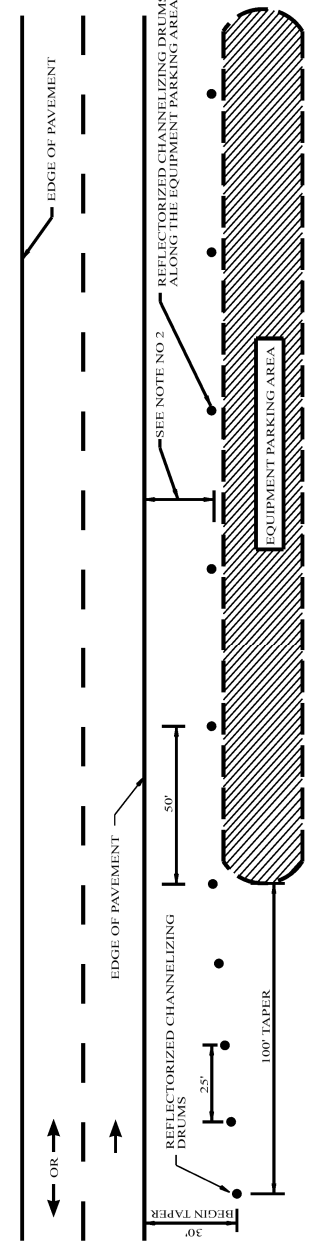
REFERENCE PROJECT NO	FISCAL YEAR	SHEET NO
SCP 59-965-24 (WEST)	2024	5



## TYPICAL FOR DROP-OFF AT EDGE OF PAVEMENT

NOTE:  
THE CONTRACTOR IS TO CONSTRUCT A WEDGE OF UNCLASSIFIED MATERIAL TO BE REMOVED BY NIGHTFALL OR WHERE PAVEMENT AND REMOVAL SHALL BE A SUBSIDIARY OBLIGATION OF THE ADJACENT LAYER.

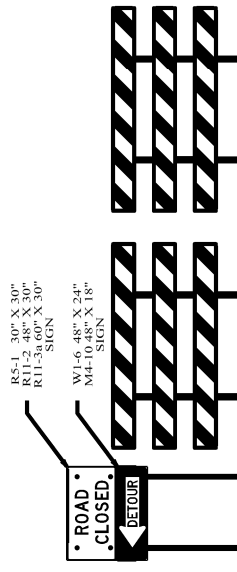
CHANNELIZING DRUMS SHALL BE PLACED AT 50 FT INTERVALS.



## NOTES:

- SEE GENERAL TRAFFIC CONTROL PLAN NOTE NO. 711.
- DRUMS TO BE AS FAR AS PRACTICAL FROM EDGE OF PAVEMENT. MINIMUM DESIRABLE DISTANCE IS 15 FEET FOR FREEWAY TYPE FACILITIES AND 10 FEET FOR OTHER FACILITIES. FOR UNUSUAL CONDITIONS, SUCH AS SPECIAL EQUIPMENT OR LIMITED AVAILABLE SPACE, DIMENSIONS LESS THAN DESIRABLE SHALL BE AS DIRECTED BY THE ENGINEER.
- ALL DEVICES TO BE FURNISHED BY THE CONTRACTOR WITHOUT COST TO THE COUNTY.

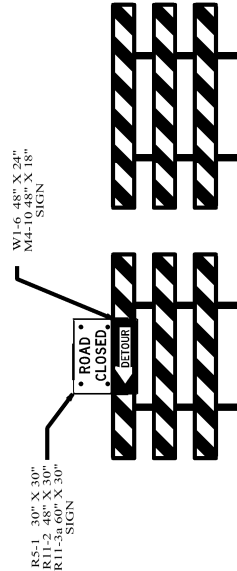
## DELINEATING DETAIL FOR EQUIPMENT PARKING OR STORING AREA



## DETAILS FOR TYPICAL PLACEMENT OF TYPE III BARRICADES INSIDE OF CLEAR ZONE

## NOTES:

- SLOPE OF STRIPES ON BARRICADES SHALL BE IN ACCORDANCE WITH SECTION 6F.68 OF THE MUTCD AND DRAWING B-107-2.
- IF SIGNS ARE REQUIRED TO BE USED IN CONJUNCTION WITH TYPE III BARRICADES TO BE PLACED INSIDE THE CLEAR ZONE, THEY SHALL BE POST MOUNTED TO THE SIDE OF THE BARRICADES AS SHOWN.
- IF ROAD CLOSED OR DETOUR SIGNS ARE REQUIRED TO BE USED WITH TYPE III BARRICADES TO BE PLACED OUTSIDE THE CLEAR ZONE, THEY SHALL BE PLACED ON THE TOP OF THE BARRICADES NEAREST THE DETOUR.



## DETAILS FOR TYPICAL PLACEMENT OF TYPE III BARRICADES OUTSIDE OF CLEAR ZONE



THIS DRAWING REPRESENTS DESIGNS PREPARED FOR USE BY THE ALABAMA DEPARTMENT OF TRANSPORTATION. IT IS THE PROPERTY OF THE ALABAMA DEPARTMENT OF TRANSPORTATION AND IS NOT TO BE REPRODUCED OR TRANSMITTED IN ANY FORM OR BY ANY MEANS, ELECTRONIC OR MECHANICAL, WITHOUT THE EXPRESS WRITTEN PERMISSION OF THE ALABAMA DEPARTMENT OF TRANSPORTATION. THIS DRAWING MAY BE PROSECUTED TO THE FULLEST EXTENT OF THE LAW.

REVISIONS: 1. Corrected text overlap on 12-8-2021 by D.J.W.

DESIGN: S. J. HARRIS  
CHECKED: J. HARRIS  
DATE: 12-8-2021

NOT TO SCALE

DESIGN BUREAU SPECIAL DRAWING  
STANDARD DETAILS FOR  
TRAFFIC CONTROL PLANS

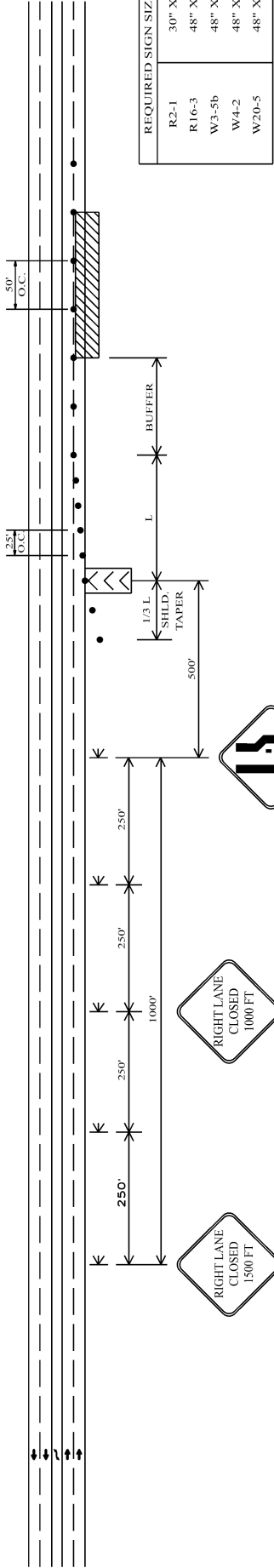
SPECIAL PROJECT DETAIL  
2001

ALABAMA DEPARTMENT  
OF TRANSPORTATION  
1400 COLUMBUS BOULEVARD  
MONTGOMERY, AL 36106-3006

REFERENCE PROJECT NO	FISCAL YEAR	SHEET NO
SCP 59-965-24 (WEST)	2024	6

# TRAFFIC CONTROL PLAN SHEET

## TYPICAL SCHEME FOR OUTSIDE LANE CLOSURE



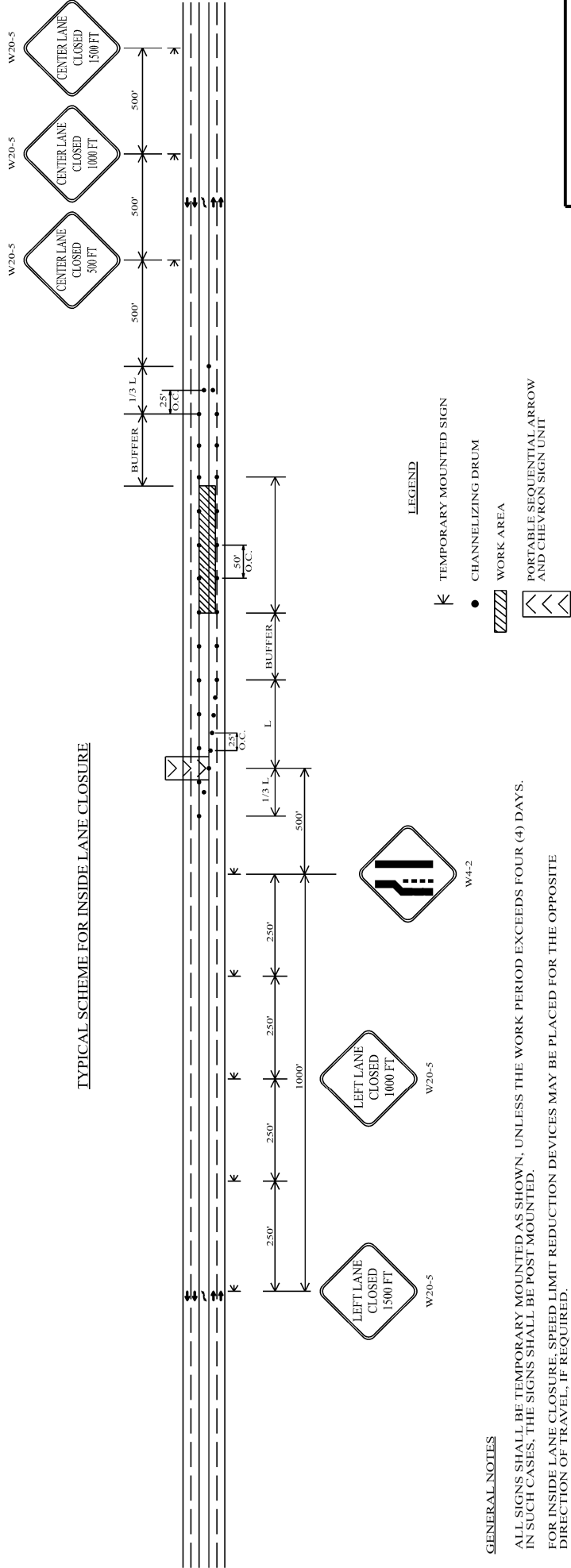
THE SIGN SIZES SHOWN ON THIS SHEET SHALL SUPERCEDE THOSE SHOWN ON THE STANDARD HIGHWAY SIGNS DRAWINGS UNLESS OTHERWISE APPROVED BY THE ENGINEER.

W4-2

W20-5

W20-5

## TYPICAL SCHEME FOR INSIDE LANE CLOSURE



### LEGEND

- TEMPORARY MOUNTED SIGN
- CHANNELIZING DRUM
- WORK AREA
- PORTABLE SEQUENTIAL ARROW AND CHEVRON SIGN UNIT

### GENERAL NOTES

- ALL SIGNS SHALL BE TEMPORARY MOUNTED AS SHOWN, UNLESS THE WORK PERIOD EXCEEDS FOUR (4) DAYS. IN SUCH CASES, THE SIGNS SHALL BE POST MOUNTED.
- FOR INSIDE LANE CLOSURE, SPEED LIMIT REDUCTION DEVICES MAY BE PLACED FOR THE OPPOSITE DIRECTION OF TRAVEL, IF REQUIRED.

NOT TO SCALE	DESIGN BUREAU SPECIAL DRAWING	CURRENT ALABAMA DEPARTMENT OF TRANSPORTATION
DETAILS FOR S-LANE HIGHWAY LANE CLOSURES (SHORT TERM OPERATIONS)	SPECIAL DRAWING NO	INDEX NO
	SPECIAL PROJECT DETAIL	