



STATE OF ALABAMA  
COUNTY OF SHELBY

**SEALED BIDS - REFLECTIVE SAFETY APPAREL CLASS III**

Sealed bids for REFLECTIVE SAFETY APPAREL CLASS III will be received in the office of the County Manager, Shelby County Administration Building, 200 West College Street-Room 123, Columbiana, Alabama 35051 until 2:30 P.M., March 28, 2022, at which time bids will be opened publicly and read. The County Commission reserves the right to reject any or all bids and to waive informalities in awarding this bid to the lowest responsive bidder. Bidders are to state that bids submitted are firm and that no claims for errors will be made after bids are opened and subsequent thereof. If you have any questions concerning bid specifications, please contact Tammy Shaw at [tshaw@shelbyal.com](mailto:tshaw@shelbyal.com).

**GENERAL INFORMATION**

All bidders **must** use our form for submitting their bid. All bids must be sealed and marked in the lower left-hand corner "**BIDS – REFLECTIVE SAFETY APPAREL CLASS III**" with opening date and time. Late bids will not be opened. Bids will not include State Sales Tax or Federal Excise Tax.

Records showing successful bidder and prices quoted will be placed on file and may be examined upon request. If contract is awarded to someone other than lowest bidder, a note of explanation will appear in the bid file and Commission Minutes. Use of trade names and numbers shall be interpreted as establishing a standard of quality and shall not be construed as limiting competition.

**DISQUALIFICATION OF BIDS**

Bids may be disqualified before awarding of the contract for any of the following:

1. Failure to mark envelope as required.
2. Failure to sign or notarize the bid document.
3. Failure to include requested information, samples when specified or other details of the bid.

**METHOD OF AWARD**

The award will be made to the lowest responsible bidder meeting specifications for each item bid. It is not the policy of the Shelby County Commission to purchase on the basis of low bid only. Quality, conformity with specifications, purpose for which required, terms of delivery, and past service and experience are among the factors that may be considered in determining the responsive bidder.

The Shelby County Commission reserves the right to award separate contracts for each item, each product, or any combination of products if in the best interest of the Shelby County Commission. Upon awarding of this contract and bid the Shelby County Commission reserves the sole right to end said contract at their sole discretion.

**CONTRACT PERIOD/PRICING**

The period of this contract will be for one (1) year from date bid is awarded. This contract may be renewed for up to three (3) years from the initial award date upon the agreement of both parties.

**IMMIGRATION LAW**


By signing this contract, the contracting parties affirm, for the duration of the agreement, that they will not violate federal immigration law or knowingly employ, hire for employment, or continue to employ an unauthorized alien within the State of Alabama. Furthermore, a contracting party found to be in violation of this provision shall be deemed in breach of the agreement and shall be responsible for all damages resulting therefrom.

**OPEN TRADE**

By signing this contract, vendor agrees that it is not currently engaged in, nor will it engage in, any boycott of a person or entity based in or doing business with a jurisdiction with which the State of Alabama can enjoy open trade.

Please provide your bid response in triplicate, one original and two copies.

Bids will not include State Sales Tax or Federal Excise Tax.

  
Chad Scroggins  
County Manager

THE UNDERSIGNED OFFERS THESE PRICES, TERMS, AND DELIVERY AS PER BID SPECIFICATIONS:

NAME OF COMPANY: \_\_\_\_\_

BY (Please Print): \_\_\_\_\_

SIGNATURE: \_\_\_\_\_

ADDRESS: \_\_\_\_\_

PHONE: \_\_\_\_\_

**BIDS SUBMITTED ARE FIRM AND NO CLAIMS FOR ERRORS WILL BE  
MADE AFTER BIDS ARE OPENED AND SUBSEQUENT THEREOF.**

Sworn to and subscribed before me this

the \_\_\_\_\_ day of \_\_\_\_\_, 2023.

\_\_\_\_\_  
Notary Public

My Commission Expires: \_\_\_\_\_

**Specifications for ANSI 107-2015**  
**Lime Yellow Micromesh Short and Long Sleeve Tee Shirts**  
**Type R: Class III**  
**Roadway and Temporary Traffic Control Zones**

**Reflective Material**

- 3m Scotchlite Reflective Material – 5510 Segmented Home Wash Trim
- 2" Retroreflective Tape is lightweight and flexible
- Segmented Tape is lightweight and flexible
- Minimizes Chafing and Breathes Better than Solid Tape
- 75 Wash Compliant

**Shirt Material**

- Lightweight 5.6 oz Jersey Kit
- 100% Jet Spun Polyester Fabric

**Additional Features**

- Pocket
- Cotton-Like Feel
- Wicks Moisture 3 times faster than Cotton
- Minimizes Odor
- Crew Neck Short and Long Sleeve Shirt

**STYLE:**

**VEA-104-CT-LM – Short High Visibility Safety Features**

- ANSI/ISEA 107-2015 Type: R Class III Compliant High Visibility Shirt
- 2" Retro reflective Tape with 360 Degree Reflective Coverage
- High Visibility Lime – a.k.a. Fluorescent Lime

**VEA-204-CT-LM – Long High Visibility Safety Features**

- ANSI/ISEA 107-2015 Type: R Class III Compliant High Visibility Shirt
- 2" Retro reflective Tape with 360 Degree Reflective Coverage
- High Visibility Lime – a.k.a. Fluorescent Lime

# **VEA 104 CT-/LM – 204 CT /LM**

## **Lime Price Sheet**

**(price includes logos)**

	<b>104 CT-regular Short sleeve</b>	<b>204 CT-regular Long sleeve</b>
	<b>Cost per shirt</b>	<b>Cost per shirt</b>
<b>Small</b>		
<b>Medium</b>		
<b>Large</b>		
<b>X-Large</b>		
<b>2 X Large</b>		
<b>3 X Large</b>		
<b>Large Tall</b>		
<b>X-Large Tall</b>		
<b>2X-Large Tall</b>		
<b>3X-Large Tall</b>		

# **Specifications for ANSI 107-2015**

## **Type R: Class III**

### **Jackets (Price Includes Logo)**

#### **RAF 413 GT**

- ANSI 107-2015 Type: R Class III
- HI-VIS Lime Safety Bomber Jacket with Detachable Hood
- 2 Tone Woven Polyester
- Waterproof
- Breathable
- Extra Tall

#### **VEA-403-ET**

- ANSI 107-2015 Type: R Class III
- HI-VIS 2 Tone Lightweight Waterproof Safety Rain Jacket
- Hooded
- Waterproof

#### **VEA-431-ST**

- ANSI 107-2015 Type: R Class III
- HI-VIS Waterproof Hooded Parka
- Hooded
- Waterproof
- Breathable

#### **VEA-602-ST**

- ANSI 107-2015 Type: R Class III
- HI-VIS Lime Safety Sweatshirt with Detachable Hood
- Hooded
- Breathable

#### **VEA-605GTLN**

- ANSI 107-2015 Type: R Class III
- HI-VIS 2-Tone Sweatshirt
- ¼ zip
- Breathable

#### **VEA-604GTLN**

- ANSI 107-2015 Type: R Class III
- Reflective 2-Tone Hoodie Sweatshirt
- Breathable

# Jacket Price Sheet

## (Price includes Logo)

	RAF 413 GT	VEA-403- T	VEA-431- ST	VEA-602- ST	VEA-604- GTLN	VEA-604- GTLN
Small						
Medium						
Large						
X-Large						
2 X Large						
3 X Large						
XL – Tall						
2XL – Tall						
3XL – Tall						

## **Specifications for ANSI 107-2015 Type R: Class III**

### **Vests**

**(Price Includes Logo)**

#### **RAF 583-ET**

- ANSI 107-2015 Type: R Class III
- HI-VIS Pocketed Zip Mesh Economy Safety Vest

	<b>RAF 583 ET</b>
	<b>Cost per vest</b>
Small	
Medium	
Large	
X-Large	
2 X Large	
3 X Large	

## **Specifications for ANSI 107-2015**

### **Type Headwear: Class HW**

#### **Ranger Hat**

#### **RAF 804-ST-LM**

- ANSI 107-2010 Type: Headwear Class HW
- HI-VIS Lime Ranger Style Safety Hat

	<b>RAF 804-ST-LM</b>
	<b>Cost per hat</b>
Fits Most LM	
Jumbo LM	



## Scope:

The following specification outlines the high visibility requirements for tee shirts that will be worn by Shelby county employees for enhancing their visibility while working in or adjacent to moving traffic, heavy equipment, work zones or other endangering elements

## Description:

The ANSI/ISEA specifications and or requirements mentioned hereinafter will be specifically referring to the "most current edition" of ANSI/ISEA 107-2015, American National Standard for High Visibility Safety Apparel and Headwear specification and guidelines. This specification is for finished ANSI/ISEA Class III high visibility tee shirts that will be worn by Shelby County personnel during day and night conditions. The Class III tee shirt shall be in compliance with the 2009 Edition of the MUTCD Part 6#02 - High Visibility Safety Apparel. The Class III Teeshirt shall be manufactured using ANSI/ISEA certified background and retroreflective component materials and meet all of the ANSI/ISEA design requirements. Component reflective material in this specification shall be separately certified to ANSI/ISEA specifications by a competent and qualified independent laboratory.

## Materials:

### Background Material – ANSI/ISEA 107-2015 certified

- Shall be 4.1 oz/yd<sup>2</sup> 100% polyester lightweight Birdseye knit fluorescent lime.

Class III Tee shirt	Design A
Body	Lime
Sleeves	Lime
Collar	Lime
Pocket	Lime

- Shall meet color, performance and care label recommendations per ANSI/ISEA 107-2015.
- The fabric shall be treated with an inherent wicking finish to transport moisture away from the body to aid in keeping the body dry.
- Shall meet third party certificate of compliance for the background materials as required by ANSI/ISEA 107-2015.
- Background material shall be certified to 75 home washings.

## Retroreflective Material -- ANSI/ISEA 107-2015 certified

- Reflective trim shall be 2 inch wide 3M™ Scotchlite™ Reflective Material -- 5510 Segmented Home Wash Trim. No substitutes.
- Shall be certified as ANSI/ISEA 107-2015 level 2 retroreflective material.
- The retroreflective trim shall be laminated onto the background material using guidelines for the lamination process as set forth by the manufacturer.
- Shall be certified to a minimum of 75 home washings.
- Shall meet care label recommendations and labeled per ANSI/ISEA 107-2015.
- Shall be made in the USA.

## Design Benefits:

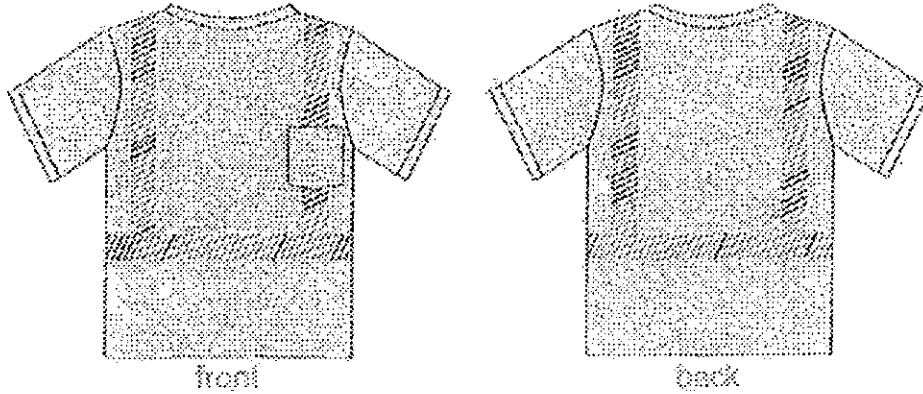
- a. Tee shirt designs shall be short sleeve with crew neck collar and a left pocket. VEA 102 CT Line.
- b. Tee shirt designs shall be short sleeve with crew neck collar and a left pocket. VEA 102 CT Line/Black.
- c. Tee shirt designs shall be long sleeve with crew neck collar and a left pocket. VEA 201 CT Line.
- d. The minimum amount of visible background material shall be 775 in<sup>2</sup>.
- e. The minimum amount of retroreflective material shall be 201 in<sup>2</sup>.
- f. Sizing -- smallest tee shirt shall meet minimum amounts of material as specified about (d and e).
- g. Garment designs shall conform to ANSI/ISEA 107-2015 Section 6 for Performance Class III.
- h. Retroreflective trim pattern shall consist of one 2 inch wide horizontal band of 3M™ Scotchlite™ Reflective Material -- 5510 Segmented Home Wash Trim around the body and one 2 inch vertical band over each shoulder connected to the horizontal band.
- i. The tee shirt shall have a front pocket attached to the left side of the shirt that is approximately 4.5 inches wide by 5 inches long with the bottom of the pocket forming a wide U Shape.
- j. There shall be no raw edges on the tee shirt.
- k. Any label that is sewn into the collar of the tee shirt must be made from a soft fabric that is not abrasive to the wearer's neck.
- l. Sizes- Small to 6XL with sizes L, XL, 2XL, 3XL, 4XL, 5 XL, 6 XL being available in Tall for the VEA102-CT Line.

## Logo materials and design:

- a. The Shelby County Alabama logo shall be approximately two and one half inch diameter single color black logo made of cut out material centered on the front pocket.
- b. The logo shall have Shelby County Alabama written as shown in the logo.

- o Lettering shall be no less than one half inch block letters made of cut out material centered in a circular configuration with Shelby County inside circle and Alabama in bottom part of circle.

Design A:



**Recommended Care Guide:**



Machine wash warm, 40 °C (105 °F)  
Max washings for retroreflective trim – 75X  
Max washings for background material – 75X  
Do not bleach  
Do not use fabric softeners  
Do not use dryer sheets  
Tumble-dry low  
Use cool iron, 110 °C (230 °F)  
Dry-clean, normal cycle

**Samples:**

All bids must be accompanied by a sample tee shirt. Bids without samples will be disqualified. In addition, the manufacturer shall provide instructions for Use. This may be provided on a garment label, to included special care instructions and appropriate precautions to observe.

**Garment Label Example:**

The tee shirt label shall include the following information:

- o Manufacturer
- o ANSI/ISEA 107-2015
- o Fabric type
- o Model #
- o Size
- o Pictogram showing garment class and retroreflectivity level
- o Care guide and maximum number of cycles

**Additional Specification/Bid Notes:**

All bid responses will need to meet the minimum standards as stated in the Manual of Uniform Traffic and Control Devices:

"All workers, including emergency responders, within the right-of-way who are exposed either to traffic (vehicles using the highway for purposes of travel) or to work vehicles and construction equipment with the TTC Zone shall wear high-visibility safety apparel that meets the Performance Class II or III requirements of the ANSI/ISEA 107-2015 publication entitled "American National Standard for High-Visibility Safety Apparel and Headwear" ..."

No minimum number of shirts to be ordered can be determined.

Delivery shall be made to Shelby County Highway Department, 506 Highway 70, Columbiana, Alabama 35051.

Shipping is not included in the shirt pricing. It will be paid upon receipt of shipping invoice provided through/ by the awarded vendor.

Delivery will be required no later than four weeks of receipt of order.