

STATE	REFERENCE PROJECT NO	FISCAL YEAR	SHEET NO	LAST SHEET NO
AL	SCP 59-937-23	2023	1	6

SHELBY COUNTY HIGHWAY DEPARTMENT

PLANS OF PROPOSED PROJECT SCP 59-937-23

REPAIR, RESURFACING & TRAFFIC STRIPE FOR VARIOUS COUNTY ROADS



STATE LOCATOR



COLUMBIANA



COUNTY ENGINEER
DAVID WILLINGHAM, P.E.

COUNTY COMMISSIONERS

DISTRICT #1 KEVIN MORRIS	DISTRICT #2 TOMMY EDWARDS
DISTRICT #3 JON PARKER	DISTRICT #4 WARD WILLIAMS
DISTRICT #5 ELWYN BEARDEN	DISTRICT #6 VACANT
DISTRICT #7 LINDSEY ALLISON	DISTRICT #8 RICK SHEPHERD
DISTRICT #9 DR. ROBBIE HAYES	

NOTE : THESE PLANS HAVE BEEN PREPARED TO
CONFORM WITH ALABAMA DEPARTMENT
OF TRANSPORTATION STANDARD
SPECIFICATIONS DATED 2022.

REFERENCE PROJECT NO

FISCAL YEAR

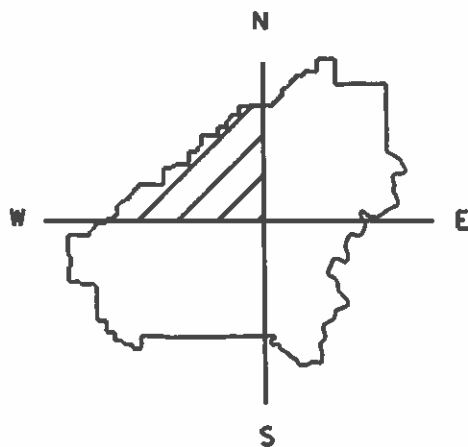
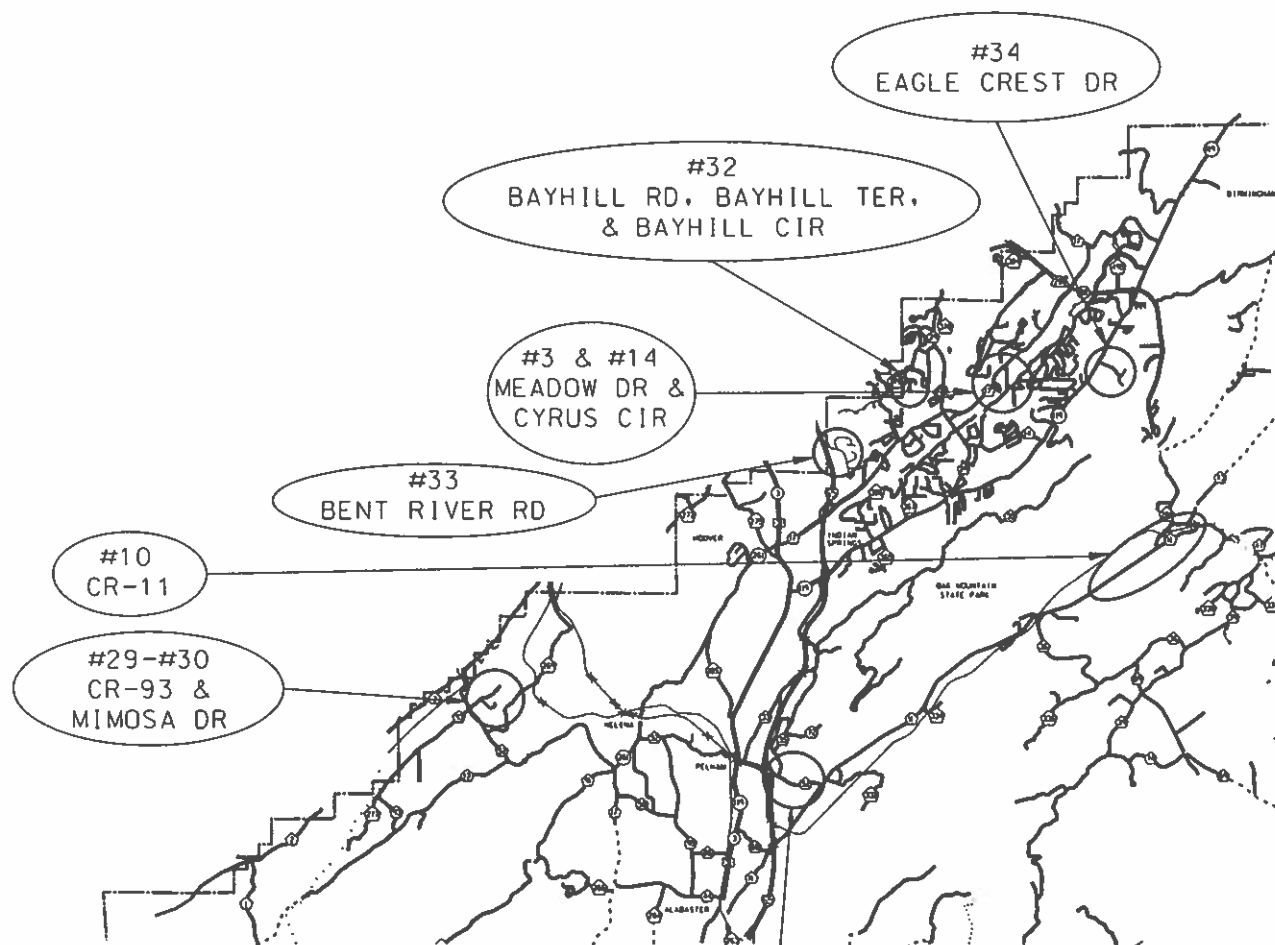
SHEET NO

SCP 59-937-23

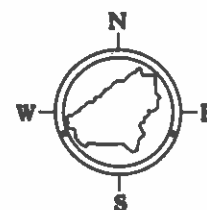
2023

1A

PROJECT LOCATIONS **PLANS OF PROPOSED PROJECT SCP 59-937-23**



COUNTY LOCATOR



NOT TO SCALE

LEGEND

INTERSTATE HIGHWAY	
U.S. HIGHWAY	
STATE HIGHWAY	
GRADED & DRAINED ROAD	
COUNTY PAVED ROAD	
RAILROAD	

REFERENCE PROJECT NO

FISCAL YEAR

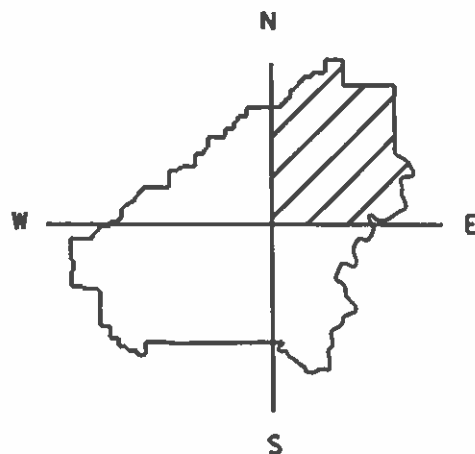
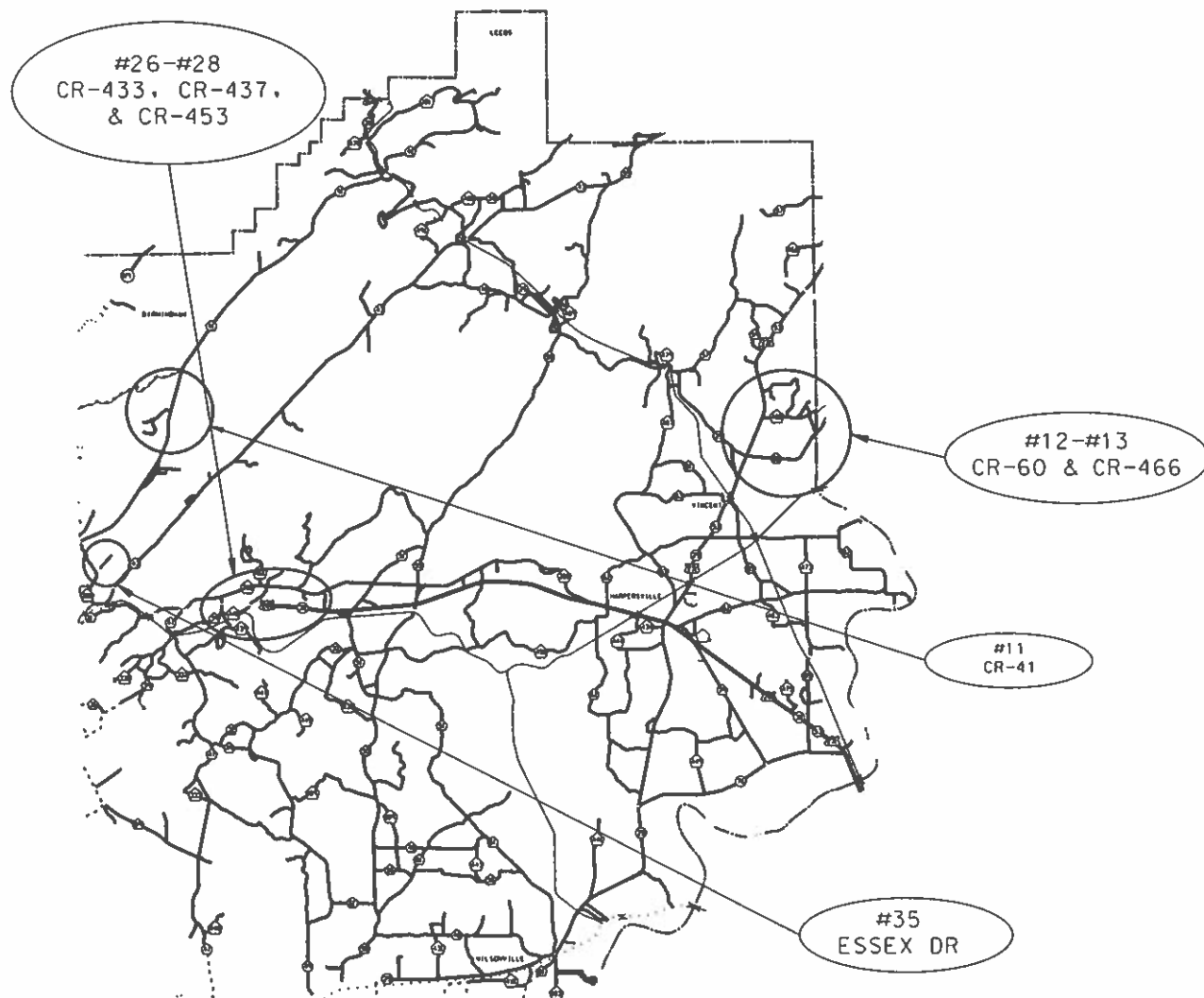
SHEET NO

SCP 59-937-23

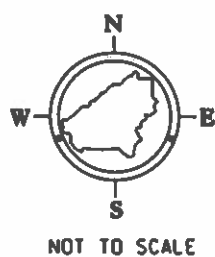
2023

1B

PROJECT LOCATIONS **PLANS OF PROPOSED PROJECT SCP 59-937-23**



LEGEND	
INTERSTATE HIGHWAY	
U.S. HIGHWAY	
STATE HIGHWAY	
GRADED & DRAINED ROAD	
COUNTY PAVED ROAD	
RAILROAD	



COUNTY LOCATOR

REFERENCE PROJECT NO

FISCAL YEAR

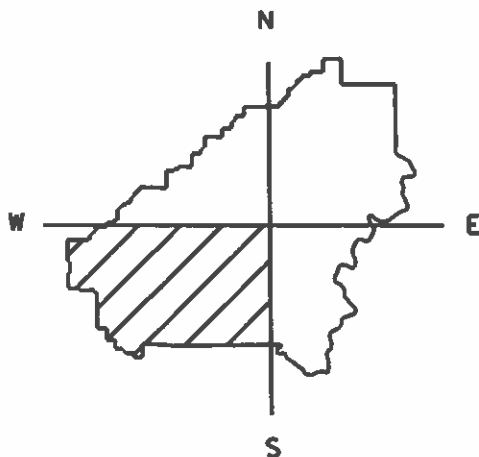
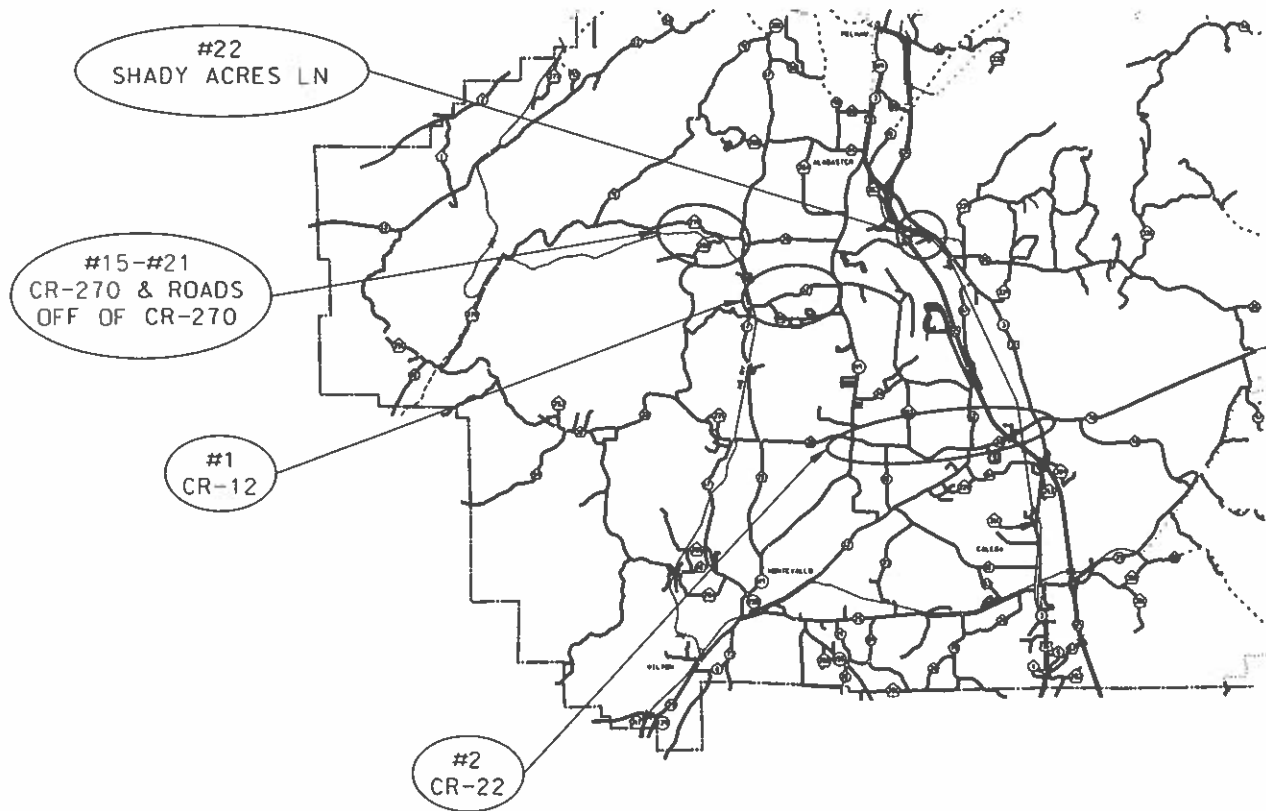
SHEET NO

SCP 59-937-23

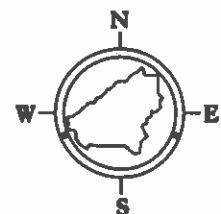
2023

1C

PROJECT LOCATIONS PLANS OF PROPOSED PROJECT SCP 59-937-23



COUNTY LOCATOR



NOT TO SCALE

LEGEND

INTERSTATE HIGHWAY	
U.S. HIGHWAY	
STATE HIGHWAY	
GRADED & DRAINED ROAD	
COUNTY PAVED ROAD	
RAILROAD	

REFERENCE PROJECT NO

FISCAL YEAR

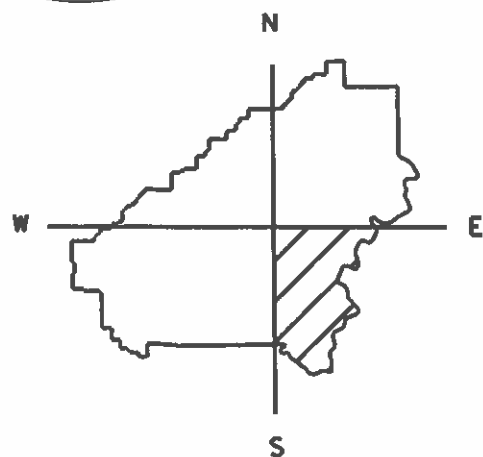
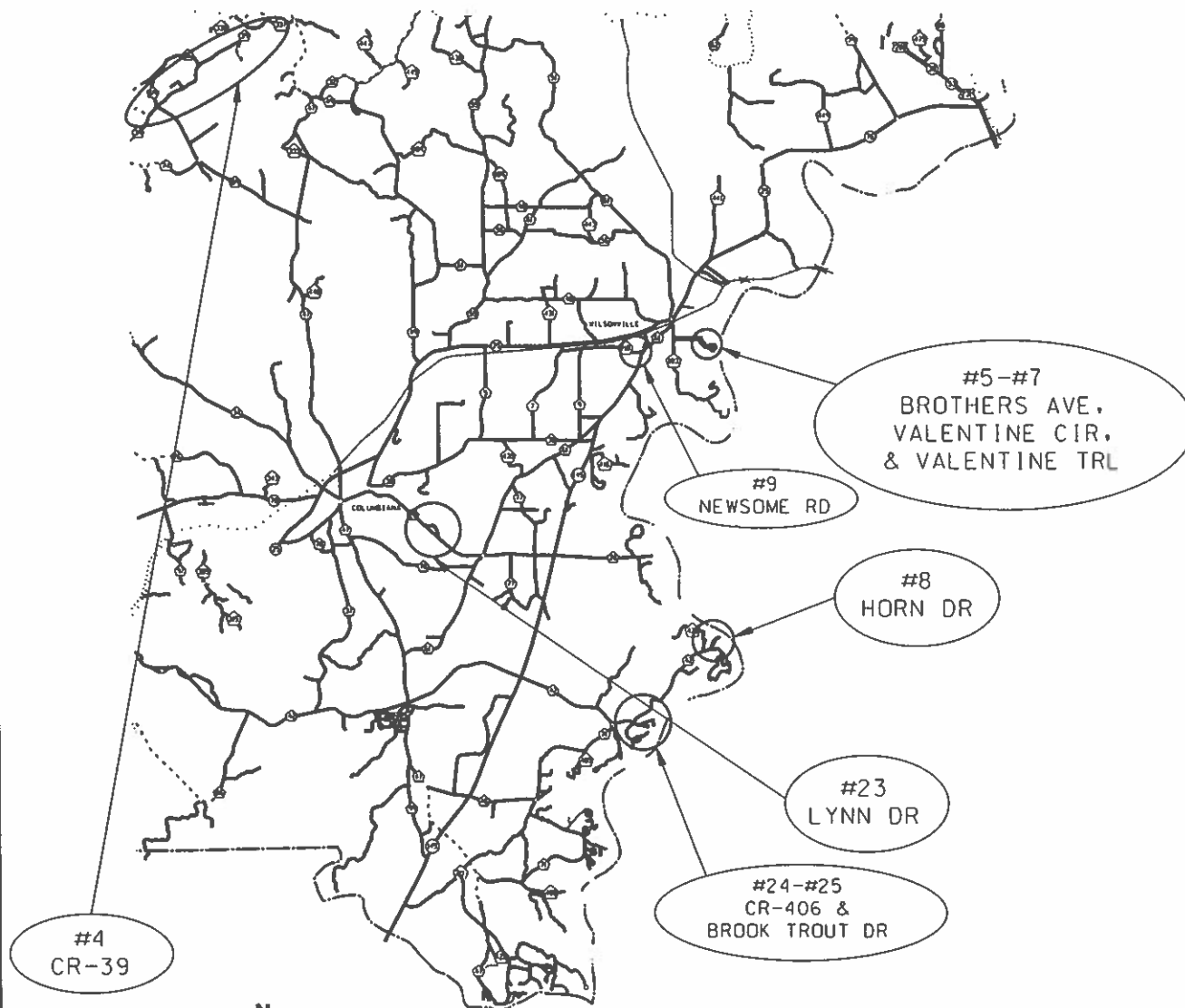
SHEET NO

SCP 59-937-23

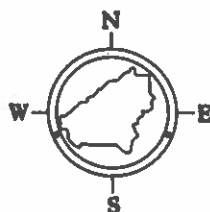
2023

10

PROJECT LOCATIONS **PLANS OF PROPOSED PROJECT SCP 59-937-23**



COUNTY LOCATOR



NOT TO SCALE

LEGEND	
INTERSTATE HIGHWAY	
U.S. HIGHWAY	
STATE HIGHWAY	
GRADED & DRAINED ROAD	
COUNTY PAVED ROAD	
RAILROAD	

REFERENCE PROJECT NO	FISCAL YEAR	SHEET NO
SCP 59-937-23	2023	1E

INDEX TO SHEETS PROJECT NO. SCP 59-937-23 SHELBY COUNTY

SHEET NO. 1	TITLE SHEET
SHEET NO. 1A-1D	PROJECT LOCATIONS
SHEET NO. 1E	INDEX TO SHEETS
SHEET NO. 2-2G	TYPICAL SECTIONS
SHEET NO. 2H-2-I	UNIT DESCRIPTIONS
SHEET NO. 2J-2K	PROJECT NOTES
SHEET NO. 2L-2M	TRAFFIC CONTROL NOTES
SHEET NO. 3	SUMMARY OF QUANTITIES
SHEET NO. 3A-3F	SUMMARY OF QUANTITIES PER UNIT
SHEET NO. 4-6	TRAFFIC CONTROL PLANS

THE FOLLOWING IS A LIST OF STANDARD OR SPECIAL DRAWINGS CONTAINED IN THE STATE OF ALABAMA HIGHWAY DEPARTMENT SPECIAL AND STANDARD HIGHWAY DRAWINGS BOOKLET DATED 2023 WHICH APPLY TO THIS PROJECT:

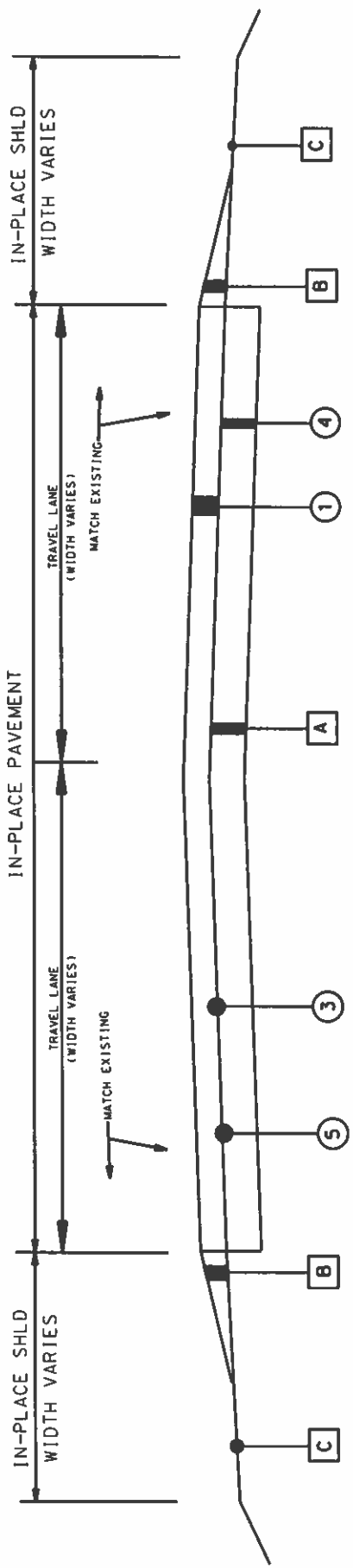
INDEX NO.	DRAWING NO.	DESCRIPTION
20901	MB-209-1	DETAILS OF MOUNTING MAILBOXES (SHT 1 OF 3)
20902	MB-209-1	DETAILS OF MOUNTING MAILBOXES (SHT 2 OF 3)
20903	MB-209-1	DETAILS OF MOUNTING MAILBOXES (SHT 3 OF 3)
42801	SBS-428-A	DETAIL SHOWING SCORING BITUMINOUS OR CONCRETE PAVEMENT SURFACE BY CUTTING
68004	TO-107	DETAILS OF INTERSECTION AND TURNOUTS
68019	SSEC-1	STANDARD SUPERELEVATION OF CURVES (SHT 4 OF 14)
70101	PS-701-6	DETAILS OF TRAFFIC STRIPING FOR TWO LANE HIGHWAYS
70104	197-NPL	DETAILS NO PASSING LINES - 2 LANE, TWO DIRECTION ROADWAY
70301	TCM-703	PAVEMENT LEGENDS & MARKINGS (SHT 1 OF 2)
70302	TCM-703	PAVEMENT LEGENDS & MARKINGS (SHT 2 OF 2)
70501	PM-705-1	DETAILS OF PAVEMENT MARKERS CLASS A, A-H & B
70504	PM-705-2	DETAILS SHOWING APPLICATION OF PAVEMENT MARKERS
71017	IHS-710-12	DETAILS OF ROADWAY SIGN POSTS (SMALL CHANNEL AND TUBULAR SECTION)
71032	IHS-710-21	DETAILS FOR LOCATION AND MOUNTING STANDARD FLAT PANEL SIGNS ON U-CHANNEL AND TUBULAR POSTS
71069	SHS-10	STANDARD HIGHWAY SIGNS
71090	SHS-26	STANDARD HIGHWAY SIGNS
71091	SHS-27	STANDARD HIGHWAY SIGNS
71092	SHS-28	STANDARD HIGHWAY SIGNS
71093	SHS-29	STANDARD HIGHWAY SIGNS
71094	SHS-30	STANDARD HIGHWAY SIGNS
71095	SHS-31	STANDARD HIGHWAY SIGNS
73504	RRX-107-2	RAILROAD CROSSING ACTIVE WARNING - SIGNS AND PAVEMENT MARKINGS
73507	RRX-107-3	DIMENSIONS FOR RAILROAD CROSSING SIGNS, SIGNALS, AND MARKINGS
74007	TCD-100	DETAILS FOR TRAFFIC CHANNELIZATION DEVICES
74201	PCMS-710	DETAILS OF PORTABLE CHANGEABLE MESSAGE SIGNS (SHT 1 OF 3)
74202	PCMS-710	DETAILS OF PORTABLE CHANGEABLE MESSAGE SIGNS (SHT 2 OF 3)
74203	PCMS-710	DETAILS OF PORTABLE CHANGEABLE MESSAGE SIGNS (SHT 3 OF 3)

PROJECT NOTES: 201.202.203.204.205.206.
207.213.214.215.216.218.
219.222.223.224.228

TYPICAL SECTION
PROJECT NO. SCP 59-937-23
SHELBY COUNTY

PROJECT NUMBER	FISCAL YEAR	SHEET NO.	LAST SHEET
SCP 59-937-23	2023	2	6

TYPICAL SECTION APPLIES TO UNITS 1-2, 4-10, 12-13, 15-30, & 33
(UNITS 5-7 & 33 SPECIFY DIFFERENT WEARING SURFACE RATES; SEE SHEETS 2H-2-1)



LEGEND

DESCRIPTION

ITEM	UNIT	DESCRIPTION
① 424A-361	TON	REQ'D SUPERPAVE BITUMINOUS CONCRETE WEARING SURFACE LAYER, 3/4" MAXIMUM AGGREGATE SIZE MIX, ESAL RANGE C/D (185 LBS/SY)
③ 401B-111	SO YD	REQ'D BITUMINOUS TREATMENT G, CRS-2 (WITH POLYMER ADDITIVE)
④ 424B-656	TON	REQ'D SUPERPAVE BITUMINOUS CONCRETE UPPER BINDER LAYER, PATCHING, 1 1/2" MAXIMUM AGGREGATE SIZE MIX, ESAL RANGE C/D (440 LBS/SY OR AS DIRECTED BY ENGINEER)
⑤ 424B-658	TON	REQ'D SUPERPAVE BITUMINOUS CONCRETE UPPER BINDER LAYER, LEVELING, 3/4" MAXIMUM AGGREGATE SIZE MIX, ESAL RANGE C/D (THICKNESS VARIES AS DIRECTED BY ENGINEER)

IN-PLACE PAVEMENT (RETAIN)

CONTRACTOR SHALL BE RESPONSIBLE FOR TEMPORARY DROP-OFFS; PERMANENT SHOULDER WORK TO BE PERFORMED BY SHELBY COUNTY (REFER TO SHEET 5)

IN-PLACE SHOULDER (RETAIN)

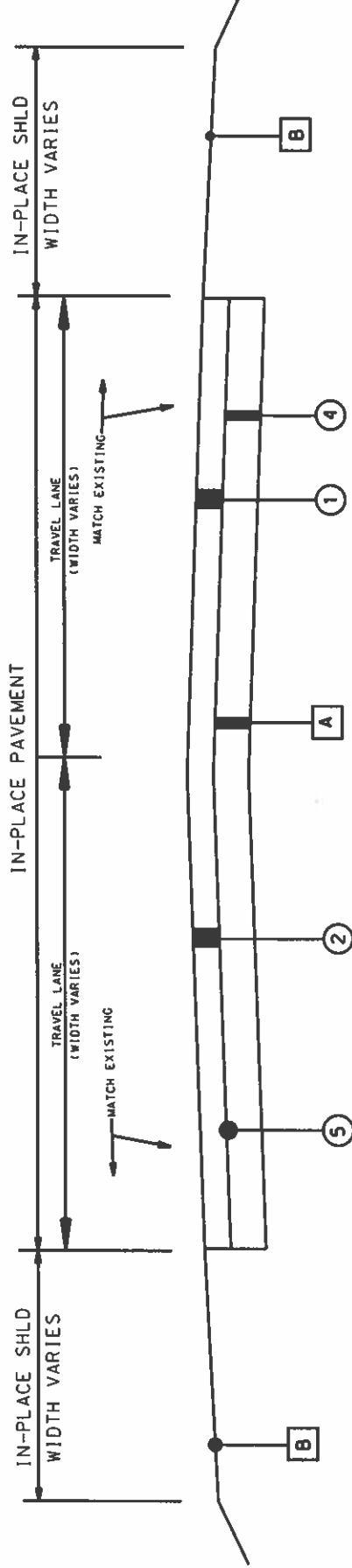
NOT TO SCALE

PROJECT NOTES: 201.202.203.204.205.206.
207.213.214.215.216.218.
219.222.223.224.228

TYPICAL SECTION
PROJECT NO. SCP 59-937-23
SHELBY COUNTY

PROJECT NUMBER	FISCAL YEAR	SHEET NO.	LAST SHEET
SCP 59-937-23	2023	2A	6

TYPICAL SECTION APPLIES TO UNIT #11 (CR-41)



LEGEND

ITEM UNIT

DESCRIPTION

- | | | |
|------------|-------|--|
| ① 424A-361 | TON | REQ'D SUPERPAVE BITUMINOUS CONCRETE WEARING SURFACE LAYER, 3/4" MAXIMUM AGGREGATE SIZE MIX. ESAL RANGE C/D (185 LBS/SY) |
| ② 408A-052 | SQ YD | REQ'D PLANING EXISTING PAVEMENT, (APPROXIMATELY 1.10" THRU 2.0" THICK) (PLANE APPROXIMATELY 1.5") (FULL WIDTH OF STREETS) |
| ④ 424B-656 | TON | REQ'D SUPERPAVE BITUMINOUS CONCRETE UPPER BINDER LAYER, PATCHING, 1 1/2" MAXIMUM AGGREGATE SIZE MIX. ESAL RANGE C/D (440 LBS/SY OR AS DIRECTED BY THE ENGINEER) |
| ⑤ 424B-658 | TON | REQ'D SUPERPAVE BITUMINOUS CONCRETE UPPER BINDER LAYER, LEVELING, 3/4" MAXIMUM AGGREGATE SIZE MIX. ESAL RANGE C/D (THICKNESS VARIES AS DIRECTED BY THE ENGINEER) |

A IN-PLACE PAVEMENT (RETAIN)

B IN-PLACE SHOULDER (RETAIN)

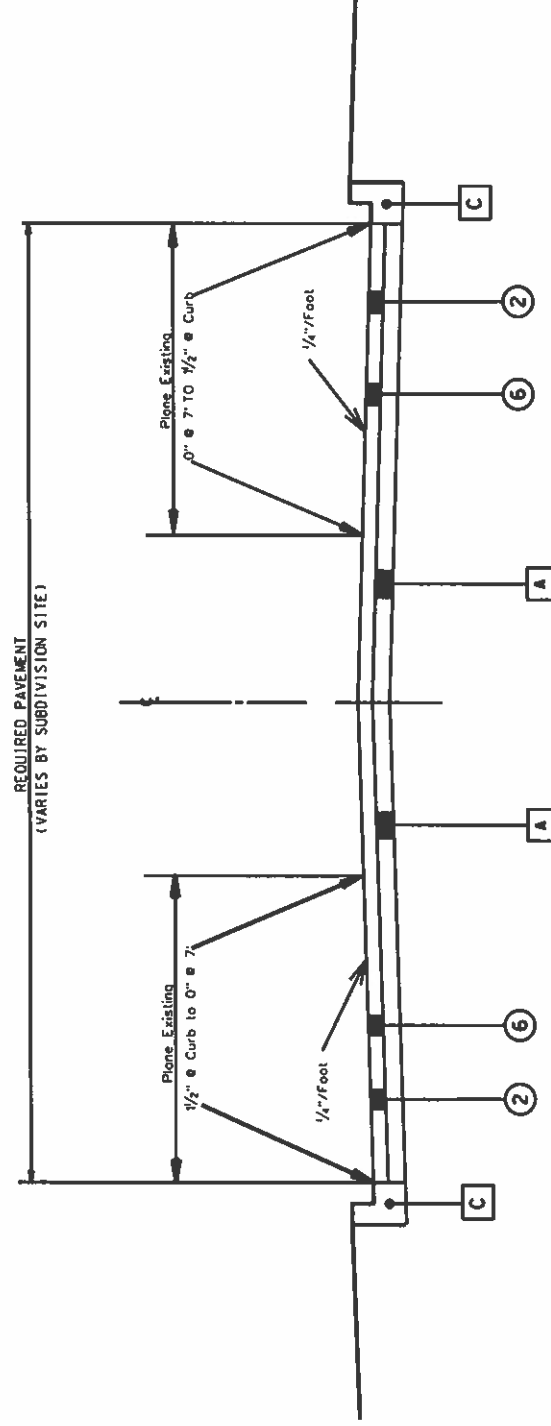
NOT TO SCALE

PROJECT NOTES: 201.202.204.205.206.207.
210.211.213.217.219.220.
221.223.224.228

TYPICAL SECTION
PROJECT NO. SCP 59-937-23
SHELBY COUNTY

PROJECT NUMBER	FISCAL YEAR	SHEET NO.	LAST SHEET
SCP 59-937-23	2023	28	6

TYPICAL SECTION APPLIES TO UNITS #32 & #35 (BAYHILL RD/TER/CIR & ESSEX DR)



TYPICAL SECTION UNITS 32 & 35
PLANING EXISTING & WEARING SURFACE

LEGEND

ITEM UNIT

424A-340 TON

408A-052 SQ YD

DESCRIPTION

REQ'D SUPERPAVE BITUMINOUS CONCRETE WEARING SURFACE LAYER, 1/2" MAXIMUM AGGREGATE SIZE MIX, ESAL RANGE A/B (165 LBS/SY)

REQ'D PLANING EXISTING PAVEMENT, (APPROXIMATELY 1.10" THRU 2.0" THICK) (PLANE APPROXIMATELY 1.5" (FULL WIDTH OF STREETS AND CUL-DE-SACS))

IN PLACE PAVEMENT (RETAIN)

IN PLACE SHOULDER (RETAIN)

IN PLACE CURB & GUTTER (RETAIN)

⑥

②

A

B

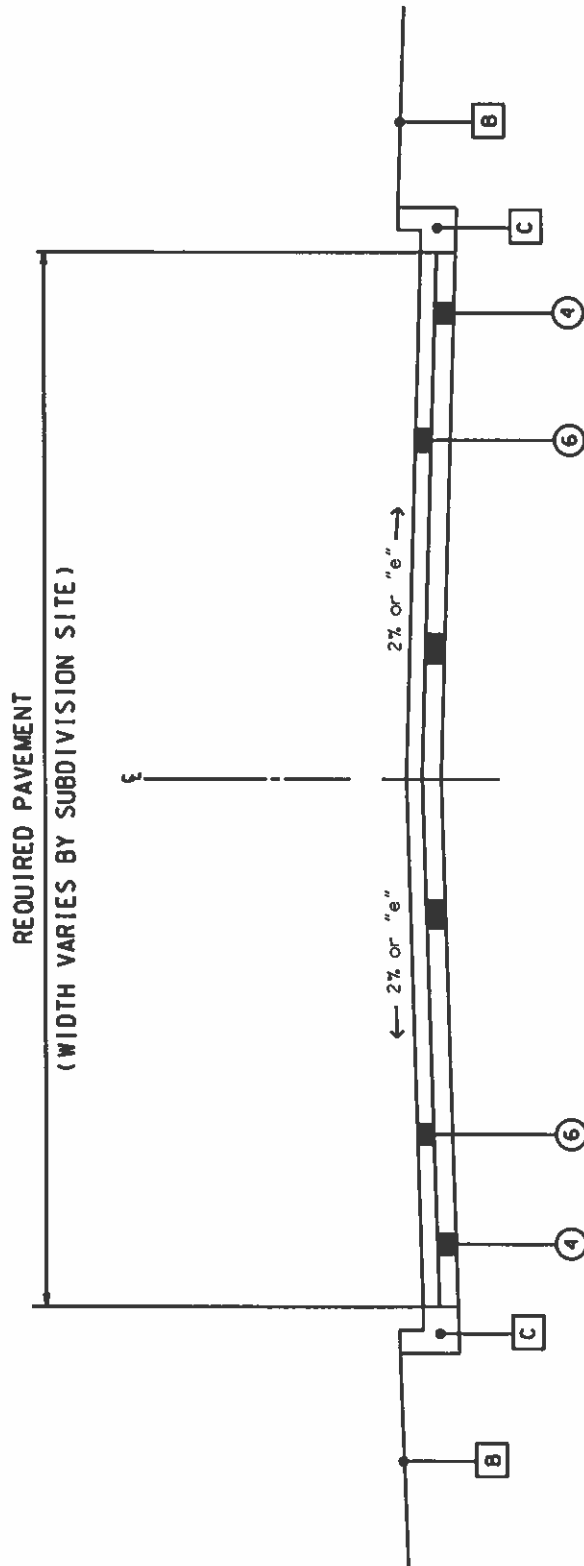
C

PROJECT NOTES: 201.202.204.205.206.207.210.
211.213.217.218.219.220.221.
223.224.228

TYPICAL SECTION
PROJECT NO. SCP 59-937-23
SHELBY COUNTY

PROJECT NUMBER	FISCAL YEAR	SHEET NO.	LAST SHEET
SCP 59-937-23	2023	2C	6

TYPICAL SECTION APPLIES TO UNIT #14 (CYRUS CIR)
OVERLAY



LEGEND

ITEM	UNIT
⑥	424A-340 TON
④	424B-656 TON

DESCRIPTION

- ⑥ REO'D SUPERPAVE BITUMINOUS CONCRETE WEARING SURFACE LAYER, 1 1/2" MAXIMUM AGGREGATE SIZE MIX, ESAL RANGE A/B (165 LBS/SY)
- ④ REO'D SUPERPAVE BITUMINOUS CONCRETE UPPER BINDER LAYER, PATCHING, 1 1/2" MAXIMUM AGGREGATE SIZE MIX, ESAL RANGE C/D (440 LBS/SY OR AS DIRECTED BY ENGINEER)
- A IN PLACE PAVEMENT (RETAIN)
- B IN PLACE SHOULDER (RETAIN)
- C IN PLACE CURB & GUTTER (RETAIN)

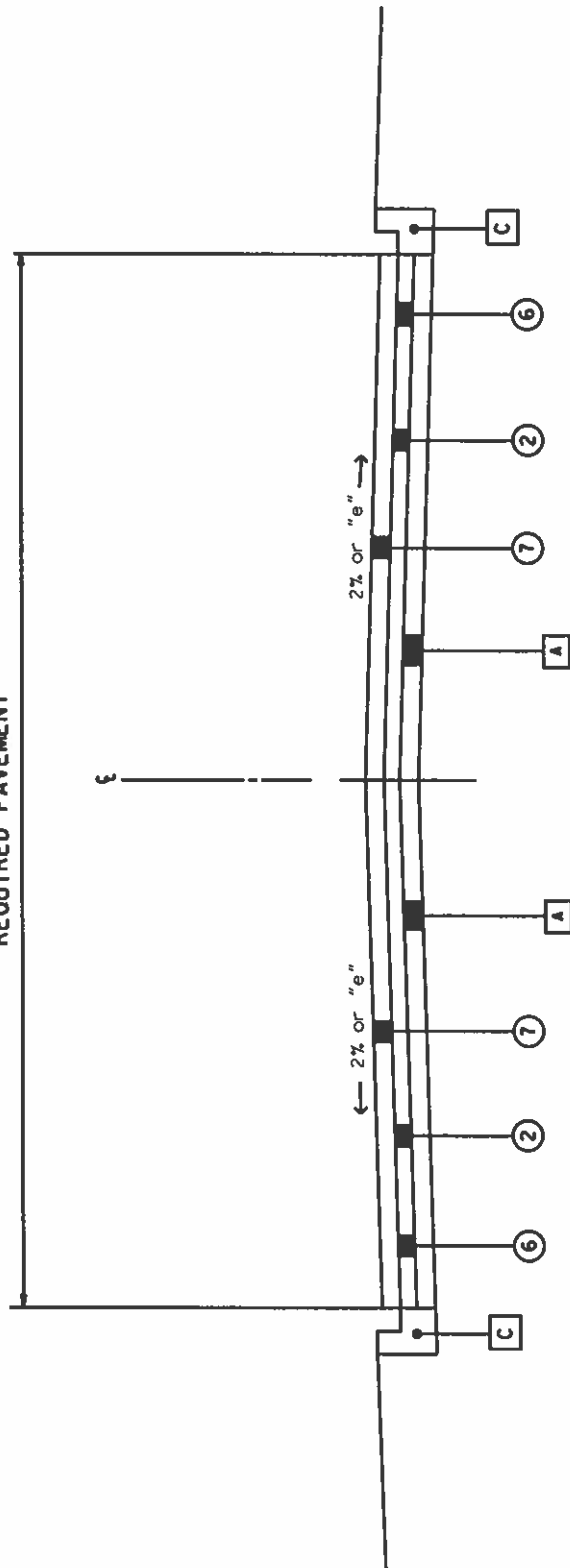
PROJECT NOTES: 201.202.204.205.207.210
211.213.217.219.220.221
223.224.228.229.230

TYPICAL SECTION
PROJECT NO. SCP 59-937-23
SHELBY COUNTY

PROJECT NUMBER	FISCAL YEAR	SHEET NO.	LAST SHEET
SCP 59-937-23	2023	20	6

TYPICAL SECTION APPLIES TO UNIT #3 (MEADOW DR)

REQUIRED PAVEMENT



TYPICAL SECTION UNIT 3

PLANING EXISTING, REPLACE 1/2" MIX. & SEAL OGFC WEARING SURFACE

LEGEND

ITEM	UNIT
⑦	TON
⑥	TON
②	SQ YD

DESCRIPTION

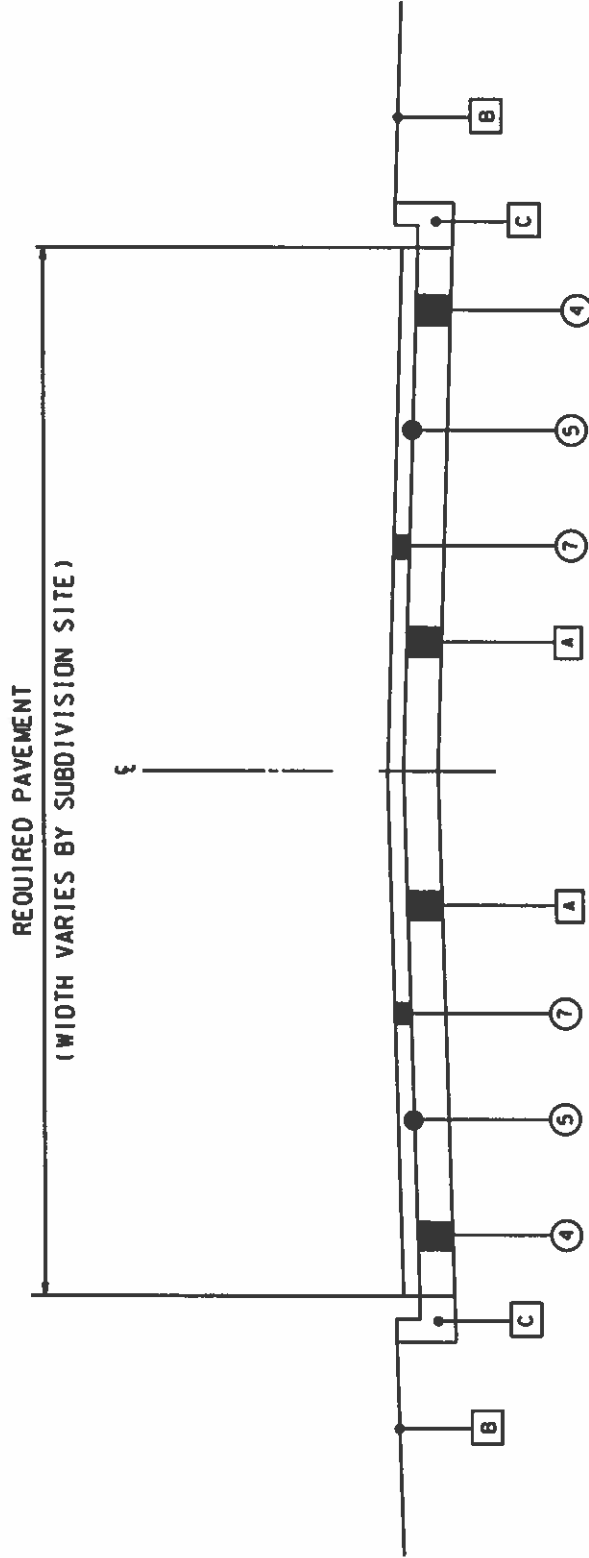
- POLYMER MODIFIED OPEN GRADED FRICTION COURSE (110 LBS/SY)
- REO'D SUPERPAVE BITUMINOUS CONCRETE WEARING SURFACE LAYER, 1/2" MAXIMUM AGGREGATE SIZE MIX, ESAL RANGE A/B (165 LBS/SY)
- REO'D PLANING EXISTING PAVEMENT (APPROXIMATELY 1.10" THRU 2.0" THICK) (PLANE APPROXIMATELY 1.5" (FULL WIDTH OF STREET))
- IN PLACE PAVEMENT (RETAIN)
- IN PLACE SHOULDER (RETAIN)
- IN PLACE CURB & GUTTER (RETAIN)

PROJECT NOTES: 201-202-204-205-207-210
211-213-217-219-220-221
223-224-228-229-230

TYPICAL SECTION PROJECT NO. SCP 59-937-23 SHELBY COUNTY

PROJECT NUMBER	FISCAL YEAR	SHEET NO.	LAST SHEET
SCP 59-937-23	2023	2E	6

TYPICAL SECTION APPLIES TO UNIT #34 (EAGLE CREST DR)
OVERLAY



LEGEND

ITEM	UNIT
⑦ 420A-015	TON
④ 424B-656	TON
⑤ 424B-658	TON

DESCRIPTION

- POLYMER MODIFIED OPEN GRADED FRICTION COURSE (110 LB/SY)
- REQ'D SUPERPAVE BITUMINOUS CONCRETE UPPER BINDER LAYER, PATCHING, 1½" MAXIMUM AGGREGATE SIZE MIX, ESAL RANGE C/D (440 LBS/SY)
- REQ'D SUPERPAVE BITUMINOUS CONCRETE UPPER BINDER LAYER, LEVELING, ¾" MAXIMUM AGGREGATE SIZE MIX, ESAL RANGE C/D (THICKNESS VARIES AS DIRECTED BY ENGINEER)
- IN PLACE PAVEMENT (RETAIN)
- IN PLACE SHOULDER (RETAIN)
- IN PLACE CURB & GUTTER (RETAIN)

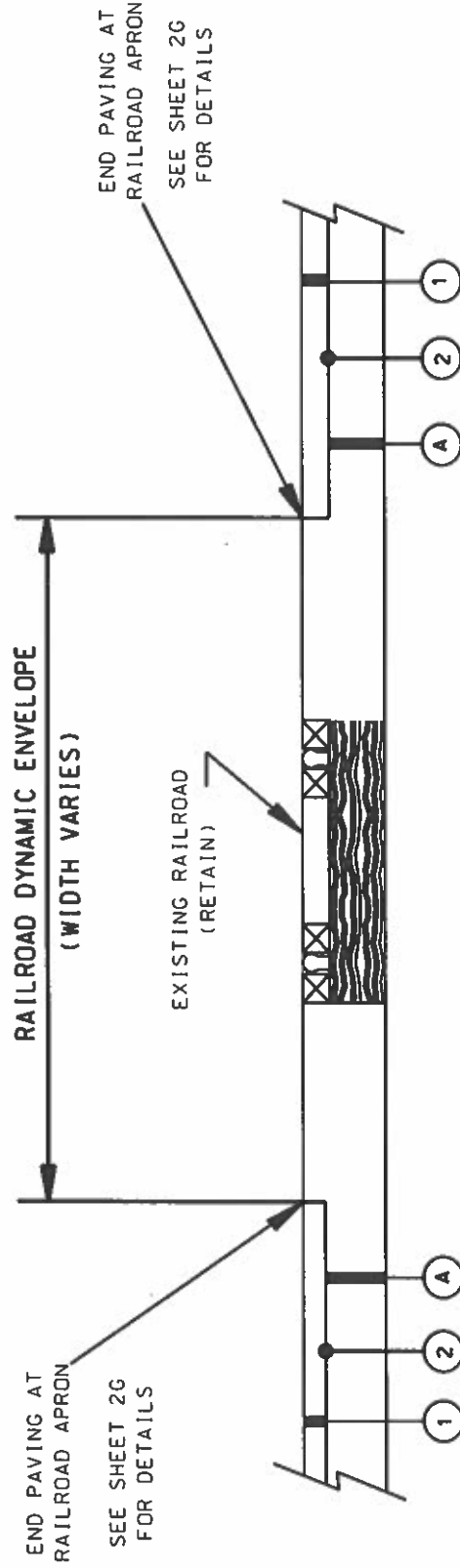
ⓐ	ⓑ	ⓒ
---	---	---

TYPICAL SECTION PROJECT NO. SCP 59-937-23 SHELBY COUNTY

PROJECT NUMBER	FISCAL YEAR	SHEET NO.	LAST SHEET
SCP 59-937-23	2023	2F	6

SKETCH SHOWING RESURFACING AT RAILROAD CROSSINGS:

CROSSING NO: 727853W (UNIT 1: CR-12)
352283W (UNIT 2: CR-22)
639418X (UNIT 26: CR-433)



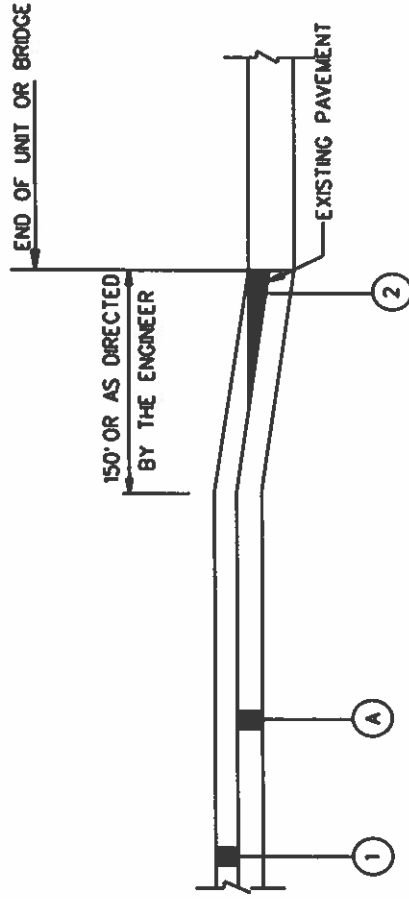
LEGEND

ITEM	UNIT	DESCRIPTION
① 424A-361	TON	REQ'D SUPERPAVE BITUMINOUS CONCRETE WEARING SURFACE LAYER, 3/4" MAXIMUM AGGREGATE SIZE MIX, ESAL RANGE C/D (185 LBS/SY)
② 408A-052	SO YD	REQ'D PLANING EXISTING PAVEMENT, (APPROXIMATELY 1.10" THRU 2.0" THICK)
Ⓐ		IN-PLACE PAVEMENT RETAIN

NOT TO SCALE

TYPICAL SECTION
PROJECT NO. SCP 59-937-23
SHELBY COUNTY

PROJECT NUMBER	FISCAL YEAR	SHEET NO.	LAST SHEET
SCP 59-937-23	2023	26	6



SKETCH SHOWING PAVEMENT TIE AT BEGIN/END OF UNIT,
AT BRIDGE ENDS AND RR/XING

EXISTING PAVEMENT TO BE REMOVED IN A SUFFICIENT AMOUNT TO ALLOW FOR FULL DEPTH OVERLAY. THIS WORK TO BE A SUBSIDIARY OBLIGATION OF THE OVERLYING LAYER AS DIRECTED BY THE ENGINEER.

LEGEND

DESCRIPTION

UNIT

①	424A-361	TON	REQ'D SUPERPAVE BITUMINOUS CONCRETE WEARING SURFACE LAYER, 3/4" MAXIMUM AGGREGATE SIZE MIX, ESAL RANGE C/D (SEE SHEETS 3A-3C FOR APPLICATION RATES)
②	408A-052	SQ YD	REQ'D PLANING EXISTING PAVEMENT (APPROXIMATELY 1.10" THRU 2.0" THICK) (PLANE APPROXIMATELY 1.50")
A			IN-PLACE PAVEMENT (PLANE AS REQUIRED)

NOT TO SCALE

UNIT DESCRIPTIONS COUNTY NAMED AND NUMBERED ROUTES

REFERENCE PROJECT NO			FISCAL YEAR		SHEET NO	
SCP 59-937-23			2023		2H	
UNIT #	NAME / ROAD #	DESCRIPTION	LENGTH FT	WIDTH FT	COMMENT	
1	CR-12 (BUTLER RD)	WEST OFF SR-119 IN ALABASTER TO CR-17	10.383	21	Patch, "G" Treat, Spot Level, Seal 185# 3/4" Mix, Restripe	
2	CR-22	WEST OFF US-31 IN CALERA WEST TO SR-119 (SKIP OVER 22/12 INTERSECTION)	21.607	22-48	Patch, "G" Treat, Spot Level, Seal 185# 3/4" Mix, Restripe	
3	MEADOW DRIVE	EAST OFF VALLEYDALE RD JUST NORTH OF SPAIN PARK HIGH SCHOOL	2.186	26	Mill full width, Replace with 165# 1/2" Mix, Seal 110# of OGFC Mix, Restripe	
4	CR-39	FROM CR-69 NORTH TO JOINT SOUTH OF CHELSEA REC PARK (NEAR KINGS HOME DR)	13.470	22	Patch, "G" Treat, Spot Level, Seal 185# 3/4" Mix, Restripe	
5	CR-418 (BROTHERS AVE)	TURN OFF MAIN STREET WHERE DOUBLE YELLOW ENDS TO VALENTINE CIRCLE	1.440	16	"G" Treat, Seal 200# 3/4" Mix	
6	VALENTINE CIRCLE	OFF BROTHERS AVE IN WILSONVILLE	2.198	15	"G" Treat, Seal 200# 3/4" Mix	
7	VALENTINE TRAIL	OFF BROTHERS AVE IN WILSONVILLE	1.176	12	"G" Treat, Seal 200# 3/4" Mix	
8	HORN DRIVE	OFF CR-42 IN SHELBY SPRINGS ON LAY LAKE	992	16	"G" Treat, Spot Level, Seal 185# 3/4" Mix, Stop Bar	
9	NEWSOME ROAD	BETWEEN JOINT WHERE ROAD WIDENS FROM 18'-20' TO CR-61	1.330	18	Patch, "G" Treat, Spot Level, Seal 185# 3/4" Mix, Restripe	
10	CR-11	JUST WEST OF CHELSEA HIGH SCHOOL TO CR-280 IN CHELSEA	11.234	28-50	Patch, "G" Treat, Spot Level, Seal 185# 3/4" Mix, Score edges & CL, Restripe	
11	CR-41	FROM HAWTHORN ST NORTH TO HUGH DANIEL DR	6.937	24-60	Mill full width, Patch, Spot Level, Seal 185# 3/4" Mix, Restripe	
12	CR-60	EAST OFF US-231 NORTH OF VINCENT	9.933	20	Patch, "G" Treat, Spot Level, Seal 185# 3/4" Mix, Restripe	
13	CR-466	EAST OFF US-231 JUST NORTH OF CR-60 TO COUNTY LINE	6.500	18	Patch, "G" Treat, Spot Level, Seal 185# 3/4" Mix, Restripe	
14	CYRUS CIRCLE	EAST OF VALLEYDALE RD (CR-17), JUST SOUTH OF MEADOW DR	581	24-44	Patch, Spot Level, Seal 165# 1/2" Mix	
15	KIINSTLER DRIVE	NORTH OFF CR-270 IN BRANTLEYVILLE	742	16	"G" Treat, Spot Level, Seal 185# 3/4" Mix	
16	BRANTLEYVILLE ROAD	NORTH OFF CR-270 IN BRANTLEYVILLE	936	16	"G" Treat, Spot Level, Seal 185# 3/4" Mix, Stop Bar	
17	BRANTLEYVILLE LANE	WEST OFF BRANTLEYVILLE RD AROUND TO CR-270	751	12	Patch, "G" Treat, Spot Level, Seal 185# 3/4" Mix, Stop Bar	
18	UNKNOWN ROAD OFF BRANTLEYVILLE RD	EAST OFF BRANTLEYVILLE RD	550	10-12	"G" Treat, Spot Level, Seal 185# 3/4" Mix	
19	RED HAWK ROAD	NORTH OFF END OF CR-270 IN BRANTLEYVILLE	1.110	16	Patch, "G" Treat, Spot Level, Seal 185# 3/4" Mix	
20	CR-270	WEST OFF CR-17 IN BRANTLEYVILLE	6.055	20	Patch, "G" Treat, Spot Level, Seal 185# 3/4" Mix, Restripe	
21	UNKNOWN ROAD OFF CR-270	SOUTH OFF CR-270 IN BRANTLEYVILLE TO RR X-ING	350	12	Patch, "G" Treat, Spot Level, Seal 185# 3/4" Mix	
22	SHADY ACRES LANE	NORTH OFF CR-26 AT RR X-ING NEAR CR-263	1.702	18	Patch, "G" Treat, Spot Level, Seal 185# 3/4" Mix, Stop Bar	
23	LYNN DRIVE	LOOP ROAD OFF CR-28 EAST OF COLUMBIANA	2.346	16	Patch, "G" Treat, Spot Level, Seal 185# 3/4" Mix	
24	CR-406	SOUTH OFF CR-42	2.773	18	Patch, "G" Treat, Spot Level, Seal 185# 3/4" Mix, Restripe	
25	BROOK TROUT DRIVE	SOUTH OFF CR-406	420	14	"G" Treat, Spot Level, Seal 185# 3/4" Mix, Stop Bar	
26	CR-433	NORTH OFF CR-439 (LIBERTY RD) TO CR-39	2.223	20	Patch, "G" Treat, Spot Level, Seal 185# 3/4" Mix, Restripe	

UNIT DESCRIPTIONS

[illegible]

REFERENCE PROJECT NO	FISCAL YEAR	SHEET NO
SCP 59-937-23	2023	2J

PROJECT NOTES
PROJECT NO. SCP 59-937-23
SHELBY COUNTY

- 201: THE MINIMUM REQUIREMENTS FOR PAVING OF TURNOUTS SHALL BE AS FOLLOWS, UNLESS OTHERWISE DIRECTED BY THE ENGINEER:
- a. CITY STREETS, COUNTY ROADS AND STATE HIGHWAYS--PAVE TO THE BACK OF RADIUS WITH JOINTS MILLED BY MILLING MACHINE FULL WIDTH AS DESIGNATED BY PROJECT ENGINEER.
 - b. BUSINESS DRIVEWAYS--PAVE TO THE BACK OF THE EXISTING SHOULDER.
 - c. ALL OTHER TURNOUTS--PAVE A MINIMUM OF 3'.
 - d. PARTICULAR ATTENTION WILL BE GIVEN TO THE SLOPE OF ALL DRIVES EITHER RESIDENTIAL OR COMMERCIAL TO ASSURE EASY PASSAGE ON AND OFF THE ROADWAY. IT WILL BE THE RESPONSIBILITY OF THE CONTRACTOR TO EITHER MAKE NECESSARY ADJUSTMENTS DURING ONGOING PHASES OF PAVING OPERATION OR ADJUST AT A LATER DATE AS DIRECTED BY THE PROJECT ENGINEER.
- 202: RESURFACING OVERLAYS SHALL MATCH EXISTING SUPERELEVATION OF HORIZONTAL CURVE.
- 203: ALL SHOULDERS ON ALL UNITS SHALL BE CLIPPED AND BROOMED TO THE ENGINEER'S SATISFACTION PRIOR TO ANY AND ALL RESURFACING.
- 204: ALL EXCESS STONE WILL BE THE RESPONSIBILITY OF THE CONTRACTOR TO REMOVE FROM INTERSECTIONS, PARKING LOTS, DRIVEWAYS, AND ALL PUBLIC PROPERTIES. ALL EXCESS STONE SHALL BE REMOVED DAILY, UNLESS OTHERWISE DIRECTED BY THE PROJECT ENGINEER.
- 205: ALL TRUCK LOAD LIMITS SHALL BE IN ACCORDANCE WITH SHELBY COUNTY, TRUCK WEIGHT ORDINANCE (9 TONS PER AXLE).
- 206: ITEM 424B-658, BITUMINOUS CONCRETE PLANT MIX, LEVELING $\frac{3}{4}$ " MAX ESAL C/D SHALL BE APPLIED AS DIRECTED BY THE PROJECT ENGINEER.
- 207: CONTRACTOR SHALL TIE BEGINNING AND ENDING OF PROJECT AND AT BRIDGE CROSSINGS AS SHOWN IN THE SKETCH ON SHEET 2G.
- 208: MOBILIZATION AND CONSTRUCTION FUEL SHALL BE SUBSIDIARY OBLIGATION OF THE CONTRACT.
- 209: EXCESS MATERIAL THAT CANNOT BE USED TO FLUSH SLOPES WITHIN A PROJECT AREA SHALL BE WASTED AS DIRECTED BY THE PROJECT ENGINEER.
- 210: CONTRACTOR IS ULTIMATELY RESPONSIBLE FOR THE CONTINUOUS AND PROPER OPERATION OF ALL EXISTING UTILITIES. THE COUNTY ENGINEER SHALL COORDINATE RELOCATION OF UTILITIES WITH THE AFFECTED UTILITY COMPANIES.
- 211: CONTRACTOR IS RESPONSIBLE FOR MAKING CONTACT WITH LOCAL WATER AUTHORITIES AND OBTAINING PERMISSION OR A METER WITH WHICH TO ACQUIRE WATER FOR USE DURING THE PROJECT.
- 212: BASE LAYER COMPACTION SHALL MEET 100% OF THE MAXIMUM THEORETICAL DENSITY OF THE MATERIAL SPECIFIED TO THE SATISFACTION OF THE COUNTY ENGINEER.
- 213: ITEM 405A-000 SHALL BE MECHANICALLY APPLIED TO ACHIEVE UNIFORM DISTRIBUTION. HAND APPLICATION WILL BE ALLOWED ONLY ON TURNOUTS AND INTERSECTIONS.
- 214: UNITS *1 (CR-12), *2 (CR-22), *4 (CR-39), & *10 (CR-11) ARE DESIGNATED AS REBUILD ALABAMA ACT UNITS. THE CONTRACTOR SHALL INSTALL REBUILD ALABAMA SIGNAGE AT EACH END OF THE APPLICABLE UNITS PRIOR TO CONSTRUCTION. DETAILS AND SPECIFICATIONS ON THE REQUIRED SIGN RA-1 ARE INCLUDED ON THE ALDOT STANDARD DRAWING SHS-10, INDEX 71069.

REFERENCE PROJECT NO	FISCAL YEAR	SHEET NO
SCP 59-937-23	2023	2K

PROJECT NOTES
PROJECT NO. SCP 59-937-23
SHELBY COUNTY

- 215: ANY MAILBOX RESETS REQUIRED TO COMPLETE THE WORK IN THIS CONTRACT SHALL BE PERFORMED BY THE CONTRACTOR AND IS A SUBSIDIARY OBLIGATION OF THE CONTRACT.
- 216: ANY ROADWAYS WITH A TOTAL WIDTH OF LESS THAN 20' SHALL BE PAVED USING A MATERIAL STRIKE OFF PLATE.
- 217: IT SHALL BE THE CONTRACTOR'S RESPONSIBILITY TO INVENTORY ALL IN-PLACE STRIPING, MARKINGS AND LEGENDS AND REFERENCE THE LOCATIONS, SO THAT ALL REQUIRED STRIPING, MARKINGS AND LEGENDS SHALL BE PLACED BACK IN THE SAME LOCATIONS AS THEY WERE BEFORE RESURFACING OPERATIONS BEGAN. THE WORK INVOLVED IN INVENTORING AND REFERENCING SHALL BE A SUBSIDIARY OBLIGATION OF ITEM 701A-230. IF IN-PLACE STRIPING, MARKINGS AND LEGENDS DIFFER FROM REQUIREMENTS ON STANDARD DRAWINGS OR MUTCD, THE PROJECT ENGINEER SHALL BE NOTIFIED BEFORE WORK BEGINS.
- 218: ALL PATCHING SHALL BE IN ACCORDANCE WITH ITEM 410.03(c) AND SUBARTICLE 410.09(a) AND COMPLETED PRIOR TO RESURFACING. PATCHES SHALL BE A MINIMUM WIDTH OF 7'-0" AND MINIMUM DEPTH OF 4". THE EXACT LOCATION, WIDTH, LENGTH AND DEPTH SHALL BE DETERMINED BY THE ENGINEER.
- 219: IF A DROP OFF OCCURS IN A TRANSVERSE DIRECTION DURING THE CONSTRUCTION OF THIS PROJECT, THE CONTRACTOR SHALL CONSTRUCT A TEMPORARY BITUMINOUS WEDGE AS DIRECTED BY THE ENGINEER. THE WORK, IF REQUIRED, SHALL BE PAID FOR AS ITEM 424A-340 OR 424A-361 DEPENDING UPON LOCATION OF WEDGE.
- 220: TEMPORARY TRAFFIC CONTROL MAKINGS SHALL BE USED FOR STOP LINES ONLY. 4 INCH TEMPORARY STRIPE SHALL BE USED FOR A TEMPORARY CHANNELIZING STRIPE AS DIRECTED BY THE ENGINEER.
- 221: ANY DAMAGE TO IN-PLACE PAVING, CURB AND GUTTER, SIDEWALK, GRASSING ETC. SHALL BE REPAIRED BY THE CONTRACTOR TO THE SATISFACTION OF THE ENGINEER AT NO COST TO THE PROJECT.
- 222: UNITS 2, 4, 10, & 11 (CR-22, CR-39, CR-11, & CR-41) SHALL BE INITIATED AND COMPLETED AFTER MAY 31, 2023 AND PRIOR TO AUGUST 1, 2023.
- 223: UNIT 1 (CR-12) SHALL BE INITIATED AND COMPLETED AFTER AUGUST 1, 2023.
- 224: THE PRIME CONTRACTOR SHALL INSTALL A MINIMUM OF 70% OF THE TOTAL TONNAGE REQUIRED FOR ITEMS 424A-340 AND 424A-361 UNLESS OTHERWISE APPROVED BY THE SHELBY COUNTY ENGINEER.
- 225: ALL FINAL STRIPING SHALL BE INSTALLED WITH A SHELBY COUNTY INSPECTOR ON SITE.
- 226: UNITS 1 (CR-12), 2 (CR-22), 4 (CR-39), 10 (CR-11), & 11 (CR-41) SHOULD BE CONSIDERED FOR POSSIBLE NIGHT WORK DUE TO TRAFFIC VOLUMES.
- 227: THE CONTRACTOR SHALL PROVIDE AN OFF-DUTY POLICE OFFICER ON SITE FOR TRAFFIC CONTROL WHEN WORKING AT NIGHT. ANY ADDITIONAL COSTS ASSOCIATED WITH NIGHT WORK INCLUDING, BUT NOT LIMITED TO SIGNS, LIGHTS, POLICE OFFICERS, ETC. SHALL BE THE RESPONSIBILITY OF THE CONTRACTOR AND SHALL BE CONSIDERED A SUBSIDIARY OBLIGATION OF THE CONTRACT. THE CONTRACTOR SHALL NOTIFY THE SHELBY COUNTY HIGHWAY DEPARTMENT A MINIMUM OF ONE MONTH IN ADVANCE OF ANY NIGHT WORK.
- 228: UNITS 1 (CR-12), 2 (CR-22), 4 (CR-39), 10 (CR-11), & 11 (CR-41) SHALL HAVE NO LANE CLOSURES ALLOWED BETWEEN THE HOURS OF 7:00-9:00 AM OR 4:00-6:00 PM UNLESS OTHERWISE DIRECTED BY THE PROJECT ENGINEER.
- 229: NO SECTION OF PAVEMENT SHALL BE LEFT OVERNIGHT WITHOUT TRAFFIC STRIPING OR RAILROAD MARKINGS BEING IN PLACE. THIS INCLUDES BITUMINOUS TREATMENT "G" AND FINAL WEARING LAYER.
- 230: ITEM 420B-000 IS INCLUDED IN THE CONTRACT TO BE USED AS TACK COAT FOR ITEM 420A-015 POLYMER MODIFIED OPEN GRADED FRICTION COURSE. THIS ITEM IS INTENDED TO BE PLACED BELOW THE OGFC LAYER AS DIRECTED IN THE ALDOT STANDARD SPECIFICATION FOR HIGHWAY CONSTRUCTION SECTION 420.
- 231: THE CONTRACTOR SHALL COMPLETE THE ENTIRE PROJECT BY OCTOBER 20, 2023.

REFERENCE PROJECT NO	FISCAL YEAR	SHEET NO
SCP 59-937-23	2023	2L

TRAFFIC CONTROL NOTES
PROJECT NO. SCP 59-937-23
SHELBY COUNTY

700. THE TRAFFIC CONTROL PLAN IS DEVELOPED IN CONFORMANCE WITH THE MANUAL ON UNIFORM TRAFFIC CONTROL DEVICES PART 6, 2009 EDITION. THE TRAFFIC CONTROL DEVICES INDICATED REPRESENT CONDITIONS KNOWN DURING PLAN DEVELOPMENT. IN THE EVENT ACTUAL PHYSICAL CONDITIONS WARRANT ADDITIONAL TRAFFIC CONTROL DEVICES, THEY SHALL BE INSTALLED IN CONFORMANCE WITH THE MUTCD PART 6 AS DIRECTED BY THE ENGINEER. COST SHALL BE PAID FOR AS A SUBSIDIARY OBLIGATION.
701. THE CONTRACTOR WILL BE PERMITTED TO DEVELOP HIS OWN TRAFFIC CONTROL PLAN TO BE USED IN LIEU OF THIS TRAFFIC CONTROL PLAN IF APPROVED BY THE ENGINEER. A CONTRACTOR DEVELOPED TRAFFIC CONTROL PLAN SHALL BE A SUBSIDIARY COST OF THE CONTRACT.
702. THE CONTRACTOR SHALL ENSURE THAT ALL TRAFFIC CONTROL DEVICES ARE PLACED AS REQUIRED IN THE TRAFFIC CONTROL PLANS AND ARE IN SERVICEABLE CONDITION AT ALL TIMES.
703. ALL SIGNS AND BARRICADES MAY BE ADJUSTED BY THE ENGINEER FOR THE SAFETY OF THE TRAVELING PUBLIC WHEN NECESSARY.
704. ADDITIONAL SIGNS MAY BE REQUIRED IF DEEMED NECESSARY BY THE ENGINEER. ADDITIONAL ITEMS TO BE A SUBSIDIARY COST OF THE CONTRACT.
705. NO DIRECT PAYMENT WILL BE MADE FOR REMOVING, RELOCATING, OR COVERING OF IN PLACE SIGNS, BARRELS, BARRICADES, OR OTHER TRAFFIC CONTROL DEVICES AS REQUIRED IN THIS TRAFFIC CONTROL PLAN (SEE SPECIAL DRAWING NO. TCD-100 IN THE ALABAMA DEPARTMENT OF TRANSPORTATION'S SPECIAL AND STANDARD HIGHWAY DRAWINGS, 2023 EDITION). COST TO BE A SUBSIDIARY OBLIGATION OF THE CONTRACT.
706. THE QUANTITIES SHOWN ON THE TRAFFIC CONTROL PLAN SHEET ARE CONSIDERED TO BE THE MINIMUM REQUIREMENT FOR HANDLING TRAFFIC AT ANY GIVE TIME DURING CONSTRUCTION.
707. THE CONTRACTOR IS TO REMOVE, RELOCATE, OR COVER DURING CONSTRUCTION AND THEN RESET OR UNCOVER UPON COMPLETION OF A PARTICULAR SECTION ANY CONFLICTING IN-PLACE ROADWAY SIGNS AS DIRECTED BY THE ENGINEER. COST TO BE A SUBSIDIARY OBLIGATION OF THE CONTRACT.
708. ALL CONSTRUCTION SIGNS PLACED BEFORE WORK BEGINS SHALL BE COVERED WITH BLACK PLASTIC OR SOME OTHER SUITABLE MATERIAL SO THAT THE SIGNS ARE NOT VISIBLE UNTIL WORK IS IN PROGRESS.
709. ALL TRAFFIC CONTROL DEVICES SHALL BE A SUBSIDIARY COST OF THE CONTRACT.
710. ALL BLACK ON ORANGE CONSTRUCTION SIGNS SHALL BE FABRICATED USING TYPES IV OR VIII FLUORESCENT ORANGE REFLECTIVE SHEETING MATERIAL FOR THE SIGN BACKGROUND.
711. DURING NON-WORKING HOURS NO EQUIPMENT OR MATERIAL SHALL BE PARKED OR STORED CLOSER THAN 30 FEET TO THE EDGE OF ANY ROADWAY CARRYING TRAFFIC. WHEN THIS IS NOT PRACTICAL, IT SHALL BE PLACED IN AN AREA APPROVED BY THE ENGINEER AND DELINEATED BY REFLECTORIZED DRUMS. THIS INCLUDES STORAGE OF TRAFFIC CONTROL DEVICES SUCH AS TRAILER MOUNTED OR OTHER TEMPORARY SIGNS, BARRICADES, DRUMS, ETC., WHICH ARE NOT IN USE DURING NON-WORKING HOURS. THESE ARE TO BE FURNISHED BY THE CONTRACTOR WITHOUT COST TO SHELBY COUNTY.

REFERENCE PROJECT NO	FISCAL YEAR	SHEET NO
SCP 59-937-23	2023	2M

TRAFFIC CONTROL NOTES
PROJECT NO. SCP 59-937-23
SHELBY COUNTY

- 712: WHERE THE LOCATION OF A REQUIRED SIGN FALLS IN A DRIVEWAY, SIDEWALK, BRIDGE, ETC., OR WHERE THE VISIBILITY OF A SIGN IS LIMITED TO THE TRAVELING PUBLIC, THE LOCATION SHALL BE ADJUSTED AS DIRECTED BY THE ENGINEER.
- 713: THE CONTRACTOR SHALL PLACE ALL ADVANCE WARNING SIGNS BEFORE PROCEEDING WITH THIS WORK.
- 714: ALL VEHICLES, EQUIPMENT, PERSONNEL (EXCEPT FLAGGERS), AND THEIR ACTIVITIES, ARE RESTRICTED AT ALL TIMES TO ONE SIDE OF THE PAVEMENT UNLESS OTHERWISE AUTHORIZED BY THE ENGINEER.
- 715: CONTRACTOR SHALL MAINTAIN AT LEAST ONE ACCESS TO BUSINESSES AND RESIDENCES DURING ALL PHASES OF CONSTRUCTION.
- 716: CONSTRUCTION SIGNS MOUNTED ON TEMPORARY SUPPORTS SHALL BE MOUNTED AT A MINIMUM HEIGHT OF 5 FEET.
- 717: FLAGGERS SHALL BE PROPERLY ATTIRED, EQUIPPED WITH STAFF MOUNTED STOP/SLOW PADDLES IN SIGHT OF EACH OTHER, OR HAVE DIRECT COMMUNICATION AT ALL TIMES. FLAGGER STATION LOCATION MAY BE VARIED FROM THOSE SHOWN BASED ON ROADWAY CONDITIONS AT THE TIME OF THE LANE CLOSURE.
- 718: FLAGGERS ARE TO BE USED WHEN DIRECTED BY THE ENGINEER. SIGNS SHALL BE PLACED AT THE APPROPRIATE TIME, AND SHALL BE COVERED OR REMOVED WHEN FLAGGERS ARE NOT ON DUTY AND DURING NON-WORKING HOURS.
- 719: FOR MOVING OPERATIONS, THE TRAFFIC CONES MAY BE DELETED IF THE FLAGGERS ARE IN SIGHT OF EACH OTHER, OR IF A PILOT CAR IS USED ON A TWO LANE ROADWAY.
- 720: DURING THE WIDENING OR RESURFACING OF ANY ROADWAY CARRYING TRAFFIC, THE CONTRACTOR SHALL ADVISE THE MOTORISTS OF ANY EDGE OF PAVEMENT DROP-OFFS 3 INCHES OR GREATER BY PLACING SHOULDER DROP-OFF SIGNS EVERY 1/2 MILE BEGINNING PRIOR TO THE WIDENING OR RESURFACING. REQUIRED SHOULDER WORK TO ELIMINATE THE DROP-OFFS SHALL BE PURSUED IN AN EXPEDITIOUS MANNER FOLLOWING THE WIDENING AND/OR RESURFACING.
- 721: DURING THE WIDENING OR RESURFACING OF ANY ROADWAY CARRYING TRAFFIC, THE CONSTRUCTION ZONE SHALL NOT BE LONGER THAN 2 MILES AT ANY GIVEN TIME.

SUMMARY OF QUANTITIES

SCP 59-937-23

REFERENCE PROJECT NO			FISCAL YEAR	SHEET NO
SCP 59-937-23			2023	3
TOTAL	ITEM NO	UNIT	DESCRIPTION	
258176	401B-111	Sq Yd	Bituminous Treatment G, CRS-2 (With Polymer Additive)	
4613	405A-000	Gallon	Tack Coat	
46746	408A-052	Sq Yd	Planing Existing Pavement (Approximately 1.10" thru 2.0")	
5	410H-000	Each	Material Remixing Device	
713	420A-015	Ton	Polymer Modified Open Graded Friction Course	
2332	420B-000	Gallon	Open Graded Friction Course Tack Coat	
1662	424A-340	Ton	Bituminous Concrete Wearing Surface Layer, 1 1/2" Max Agg, ESAL A/B	
25687	424A-361	Ton	Bituminous Concrete Wearing Surface Layer, 3/4" Max Agg, ESAL C/D	
1896	424A-370	Ton	Bituminous Concrete Wearing Surface Layer, Widening, 3/4" Max Agg, ESAL C/D	
2335	424B-656	Ton	Bituminous Concrete Upper Binder Layer, Patching, 1 1/2" Max Agg, ESAL C/D	
2530	424B-658	Ton	Bituminous Concrete Upper Binder Layer, Leveling, 3/4" Max Agg, ESAL C/D	
6	428A-001	Mile	Scoring Bituminous Pavement Surface	
11	701A-007	Mile	Solid White, Class 1, Type A Traffic Stripe (5" wide)	
2	701A-011	Mile	Broken Yellow, Class 1, Type A Traffic Stripe (5" wide)	
15	701A-016	Mile	Solid Yellow, Class 1, Type A Traffic Stripe (5" wide)	
26	701A-227	Mile	Solid White, Class 2, Type A Traffic Stripe, (5" wide)	
32	701A-230	Mile	Solid Yellow, Class 2, Type A Traffic Stripe, (5" wide)	
3	701A-239	Mile	Broken White, Class 2, Type A Traffic Stripe (5" wide)	
5	701A-244	Mile	Broken Yellow, Class 2, Type A Traffic Stripe (5" wide)	
7628	701B-207	Lin Ft	Dotted, Class 2, Type A Traffic Stripe	
6	701C-002	Mile	Broken Temporary Traffic Stripe (Paint)	
121	701C-003	Mile	Solid Temporary Traffic Stripe (Paint)	
842	701G-146	Lin Ft	Solid White, Class W, Type A Traffic Stripe (5" wide)	
842	701G-154	Lin Ft	Solid Yellow, Class W, Type A Traffic Stripe (5" wide)	
1684	701H-002	Lin Ft	Solid Traffic Stripe Removed (Tape)	
15500	703A-002	Sq Ft	Traffic Control Markings, Class 2, Type A	
1893	703B-002	Sq Ft	Traffic Control Legends, Class 2, Type A	
8625	703D-002	Sq Ft	Temporary Traffic Control Markings	
533	705A-030	Each	Pavement Markers, Class A-H, Type 2-C	
1661	705A-032	Each	Pavement Markers, Class A-H, Type 1-B	
2458	705A-037	Each	Pavement Markers, Class A-H, Type 2-D	
1210	705A-038	Each	Pavement Markers, Class A-H, Type 2-E	
10	742A-001	Each	Portable Changeable Message Sign, Type 2	

SUMMARY OF QUANTITIES

REQUIRED ASPHALT RESURFACING

CONTRACT UNIT	401B-111 BITUMINOUS SURFACE TREATMENT TYPE "C", CRS-2 (WITH POLYMER ADDITIVE)	405A-000 TACK COAT	408A-052 PLANING EXISTING PAVEMENT (2" DEPTH)	410H-000 MATERIAL REMIXING DEVICE	420A-015 POLYMER MODIFIED OPEN GRADED FRICTION COURSE	420B-000 OPEN GRADED FRICTION COURSE TACK COAT	424A-340 BITUMINOUS WEARING SURFACE 1 1/2" MAX AGG ESAL A/B	424A-361 BITUMINOUS WEARING SURFACE 3/4" MAX AGG ESAL C/D	424A-370 BITUMINOUS WEARING SURFACE (WIDENING) 3/4" MAX AGG ESAL C/D	424B-656 BITUMINOUS UPPER BINDER LAYER (PATCHING) 1 1/2" MAX AGG ESAL C/D	424B-658 BITUMINOUS UPPER BINDER LAYER (LEVELING) 3/4" MAX AGG ESAL C/D	428A-001 SCORING BITUMINOUS PAVEMENT SURFACE
	SOYD	GAL	SOYD	EACH	TON	GAL	TON	TON	TON	TON	TON	MILE
1 CR-12 (BUTLER RD)	25907	200	845	1				2396	215	50	25	
2 CR-22	62819	400	5882	1				5811	544	320	500	
3 MEADOW DRIVE		318	6360		350	1145	525					
4 CR-39	32927	140		1				3046	170	300	340	
5 CR-418 (BROTHERS AVE)	2560							256				
6 VALENTINE CIRCLE	3663							366				
7 VALENTINE TRAIL	1568							157				
8 HORN DRIVE	1764	30						163			40	
9 NEWSOME ROAD	2660							246		25		
10 CR-11	38034	1000		1				3518	432	150	150	6
11 CR-41		1332	26633	1				2035	430	175	175	
12 CR-60	22073	50						2042	50	65	75	
13 CR-466	13000	120						1203	10	120	200	
14 CYRUS CIRCLE		122					202			110		
15 KIINSTLER DRIVE	1319	20						122			30	
16 BRANTLEYVILLE ROAD	1664	20						154			35	
17 BRANTLEYVILLE LANE	1001	20						93		50	25	
18 UNKNOWN ROAD OFF BRANTLEYVILLE RD	672	20						62			25	
19 RED HAWK ROAD	1973	20						183		100	60	
20 CR-270	13456	100						1245	35	60	80	
21 UNKNOWN ROAD OFF CR-270	467	20						43		50	25	
22 SHADY ACRES LANE	3404	20						315		100	75	

NOTE: UNLESS OTHERWISE NOTED IN THIS PLAN SET OR DIRECTED BY THE PROJECT ENGINEER, PLACEMENT RATES FOR PATCHING AREAS SHALL BE 400#/SY AND LEVELING SHALL BE 165#/SY

SUMMARY OF QUANTITIES

COUNTY PROJECT NUMBER				FISCAL YEAR				SHEET NO				
SCP 59-937-23				2023				3B				
REQUIRED ASPHALT RESURFACING												
CONTRACT UNIT	401B-111 BITUMINOUS SURFACE TREATMENT TYPE "G". CRS-2 (WITH POLYMER ADDITIVE)	405A-000 TACK COAT	408A-052 PLANING EXISTING PAVEMENT (2" DEPTH)	410H-000 MATERIAL REMIXING DEVICE	420A-015 POLYMER MODIFIED OPEN GRADED FRICTION COURSE	420B-000 OPEN GRADED FRICTION COURSE TACK COAT	424A-340 BITUMINOUS WEARING SURFACE 1/2" MAX AGG ESAL A/B	424A-361 BITUMINOUS WEARING SURFACE 3/4" MAX AGG ESAL C/D	424A-370 BITUMINOUS WEARING SURFACE (WIDENING) 3/4" MAX AGG ESAL C/D	424B-656 BITUMINOUS UPPER BINDER LAYER (PATCHING) 1 1/2" MAX AGG ESAL C/D	424B-658 BITUMINOUS UPPER BINDER LAYER (LEVELING) 3/4" MAX AGG ESAL C/D	428A-001 SCORING BITUMINOUS PAVEMENT SURFACE
	SOYD	GAL	SOYD	EACH	TON	GAL	TON	TON	TON	TON	TON	MILE
23 LYNN DRIVE	4171	20						386		25	30	
24 CR-406	5546	50						513		25	125	
25 BROOK TROUT DRIVE	653	25						60			25	
26 CR-433	4940	50						457	10	320	170	
27 CR-437	4366	85						404	180		140	
28 CR-453	1860	20						172			40	
29 CR-93	1284	20						119			25	
30 MIMOSA DRIVE	1294	20						120			25	
31 CR-52 EAST										60	50	

SUMMARY OF QUANTITIES STRIPING

[illegible]

SUMMARY OF QUANTITIES STRIPING

[illegible]

SHEET NO

3E

TOTALS ON SHEET 3F

MARKINGS, LEGENDS, AND P,

[illegible]

REFERENCE PROJECT NO

FISCAL YEAR

SHEET NO

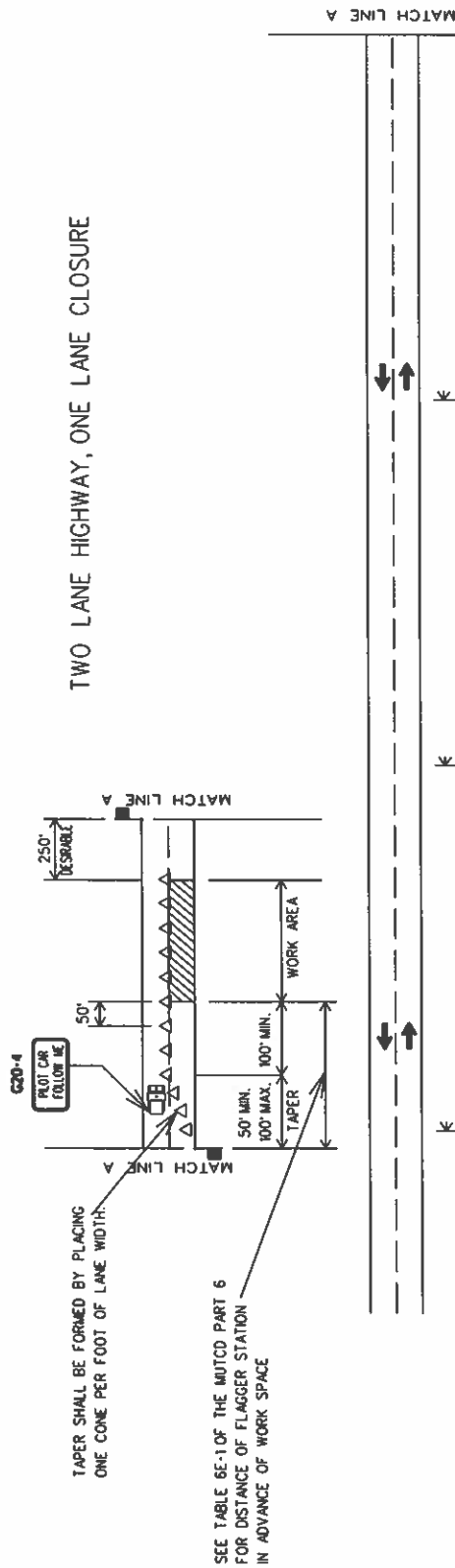
SCP 59-937-23

2023

4

TRAFFIC CONTROL PLAN SHEET

TWO LANE HIGHWAY, ONE LANE CLOSURE



W20-7



W20-4



W20-1

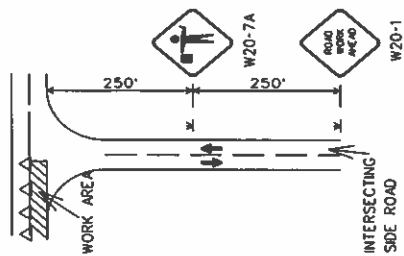
REQUIRED SIGN SIZES	
W20-1	48" X 48"
W20-4	48" X 48"
W20-7	48" X 48"
G20-4	36" X 18"

LEGEND

- TEMPORARY MOUNTED SIGN
- POST MOUNTED SIGN
- CONES WITH BALAST
- FLAGGER

TRAFFIC CONTROL FOR INTERSECTING SIDE ROADS WITHIN WORK AREA

NOTE: THE W20-1 AND W20-7A SIGNS TO BE USED ON INTERSECTING ROADS SHALL BE 36"X36" IN SIZE. THE TEMPORARY MOUNTED W20-1 ROAD WORK AHEAD SIGN SHOWN ON THE SIDE ROAD WILL NOT BE REQUIRED IF ONE IS ALREADY POST MOUNTED ON THE SIDE STREET.

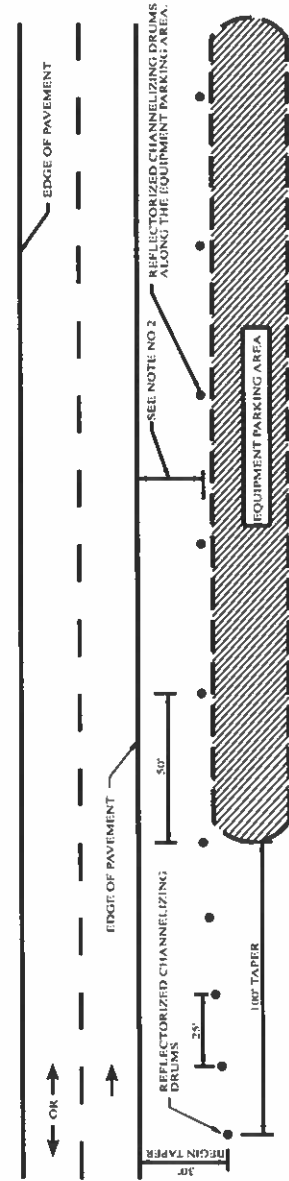


DESIGN BUREAU SPECIAL DRAWING
DETAILS FOR TRAFFIC CONTROL FOR
RESURFACING TWO LANE HIGHWAYS

DATE	BY	DATE	BY
SHEET TITLE		ROUTE	
NOT TO SCALE		VARIOUS	

TEMPORARY TRAFFIC CONTROL PLAN SHEET

REFERENCE PROJECT NO.	FISCAL YEAR	SHEET NO.
SCP 59-937-23	2023	5



NOTES:

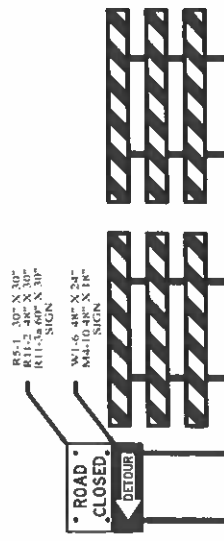
- SEE GENERAL TRAFFIC CONTROL PLAN NOTE NO. 711.
- DRUMS TO BE AS FAR AS PRACTICAL FROM EDGE OF PAVEMENT. MINIMUM DESIRABLE DISTANCE IS 15 FEET FOR FREEWAY TYPE. DRUMS TO BE PLACED AT 50' INTERVALS. DRUMS TO BE PLACED AT 25' INTERVALS IN ALL OTHER CONDITIONS. SUCH AS SPECIAL EQUIPMENT OR LIMITED AVAILABLE SPACE, DIMENSIONS LESS THAN DESIRABLE SHALL BE AS DIRECTED BY THE ENGINEER.
- ALL DEVICES TO BE FURNISHED BY THE CONTRACTOR WITHOUT COST TO THE COUNTY.

DELINEATING DETAIL FOR EQUIPMENT PARKING OR STORING AREA



TYPICAL FOR DROP-OFF AT EDGE OF PAVEMENT

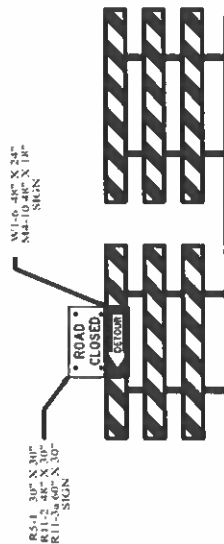
- NOTE: CONTRACTOR IS TO CONSTRUCT A WEDGE OF UNCLASSIFIED EXCAVATION OR CRUSHED AGGREGATE BASE. THE COST OF PLACING AND REMOVAL SHALL BE A SUBSIDIARY OBLIGATION OF THE ADJACENT LAYER.
- CHANNELIZING DRUMS SHALL BE PLACED AT 50 FT INTERVALS.



DETAILS FOR TYPICAL PLACEMENT OF TYPE III BARRICADES INSIDE OF CLEAR ZONE

NOTES

- SLOPE OF STRIPES ON BARRICADES SHALL BE IN ACCORDANCE WITH SECTION 66.06 OF THE MUTCD AND DRAWING B-107-2.
- IF SIGNS ARE REQUIRED TO BE USED IN CONJUNCTION WITH TYPE III BARRICADES TO BE PLACED INSIDE THE CLEAR ZONE, THEY SHALL BE POST MOUNTED TO THE SIDE OF THE BARRICADES AS SHOWN.
- IF ROAD CLOSED OR DETOUR SIGNS ARE REQUIRED TO BE USED WITH TYPE III BARRICADES TO BE PLACED OUTSIDE THE CLEAR ZONE, THEY SHALL BE PLACED ON THE TOP OF THE BARRICADES NEAREST THE DETOUR.



DETAILS FOR TYPICAL PLACEMENT OF TYPE III BARRICADES OUTSIDE OF CLEAR ZONE



ALABAMA DEPARTMENT OF TRANSPORTATION
BUREAU OF TRAFFIC CONTROL
1000 COLLETT AVENUE, SUITE 100
MONTGOMERY, AL 36103-0001

DESIGNED BY: [Signature]
CHECKED BY: [Signature]
DATE: 12-28-2023
PROJECT NO.: SCP 59-937-23

IN ACCORDANCE WITH THE ALABAMA DEPARTMENT OF TRANSPORTATION STANDARD SPECIFICATIONS FOR HIGHWAY CONSTRUCTION, 2019 EDITION, SECTION 66.06.

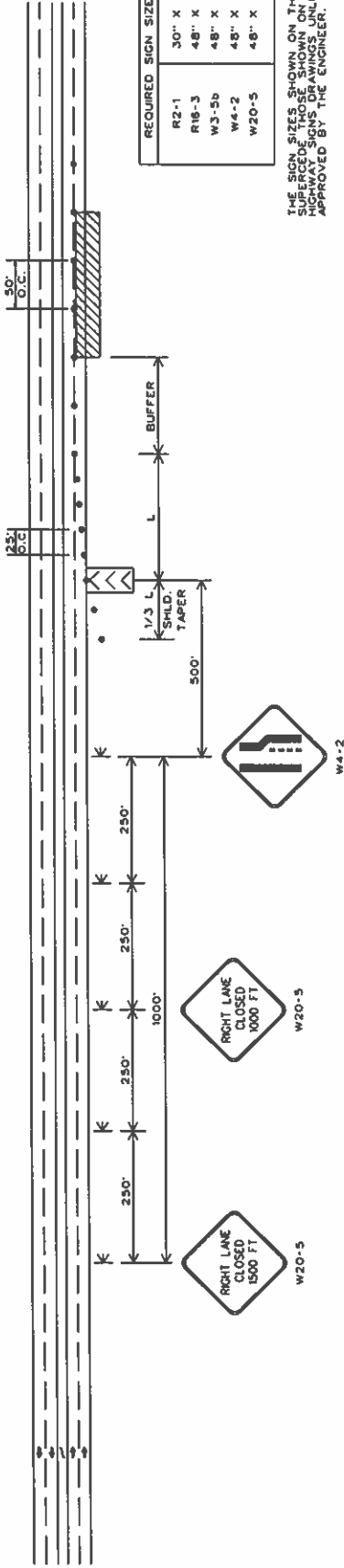
DATE: 12-28-2023
BY: [Signature]
FOR: [Signature]

STANDARD DETAILS FOR TRAFFIC CONTROL PLANS

SPECIAL PROJECT DETAIL

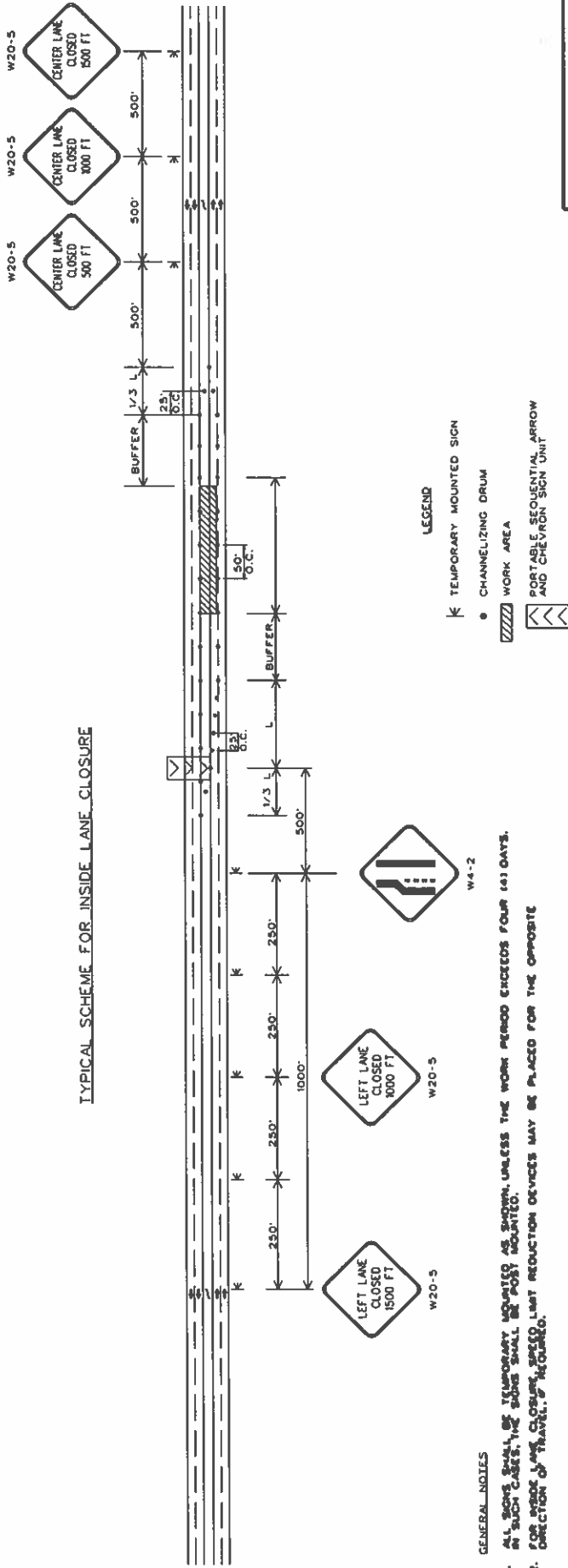
2001

TRAFFIC CONTROL PLAN SHEET TYPICAL SCHEME FOR OUTSIDE LANE CLOSURE



THE SIGN SIZES SHOWN ON THIS SHEET SHALL SUPERSEDE THOSE SHOWN ON THE STANDARD APPROVED SIGNING PLAN UNLESS OTHERWISE APPROVED BY THE ENGINEER.

TYPICAL SCHEME FOR INSIDE LANE CLOSURE



GENERAL NOTES

- ALL SIGNS SHALL BE TEMPORARILY MOUNTED AS SHOWN UNLESS THE WORK PERIOD EXCEEDS FOUR (4) DAYS. IF SUCH CASES THE SIGNS SHALL BE PERMANENTLY MOUNTED.
- FOR WORK AREAS, CLOSURE SPEED LIMIT REDUCTION DEVICES MAY BE PLACED FOR THE OPPOSITE DIRECTION OF TRAVEL IF REQUIRED.