

STATE	REFERENCE PROJECT NO	FISCAL YEAR	SHEET NO	LAST SHEET NO
AL	SCP 59-928-22	2022	1	4

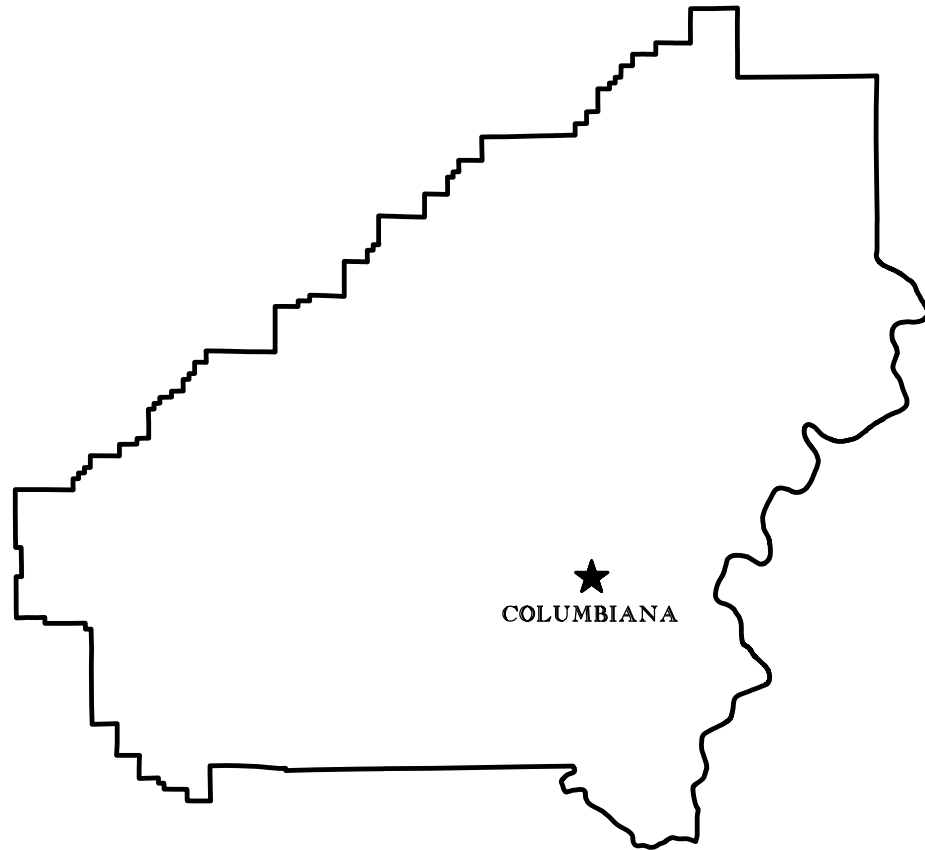
# SHELBY COUNTY HIGHWAY DEPARTMENT

## PLANS OF PROPOSED PROJECT SCP 59-928-22

REPAIR, RESURFACING & TRAFFIC STRIPE FOR VARIOUS COUNTY ROADS



STATE LOCATOR



★  
COLUMBIANA



COUNTY ENGINEER  
**KENNETH R. COLE, P.E.**

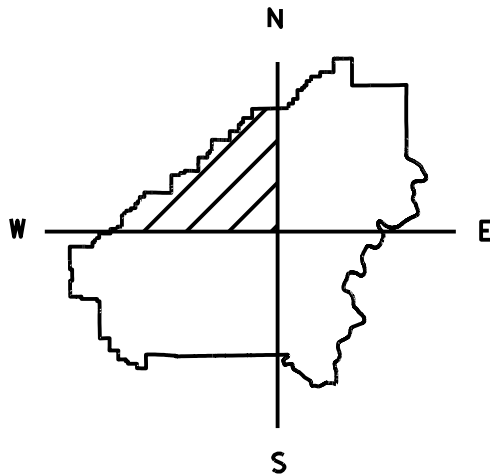
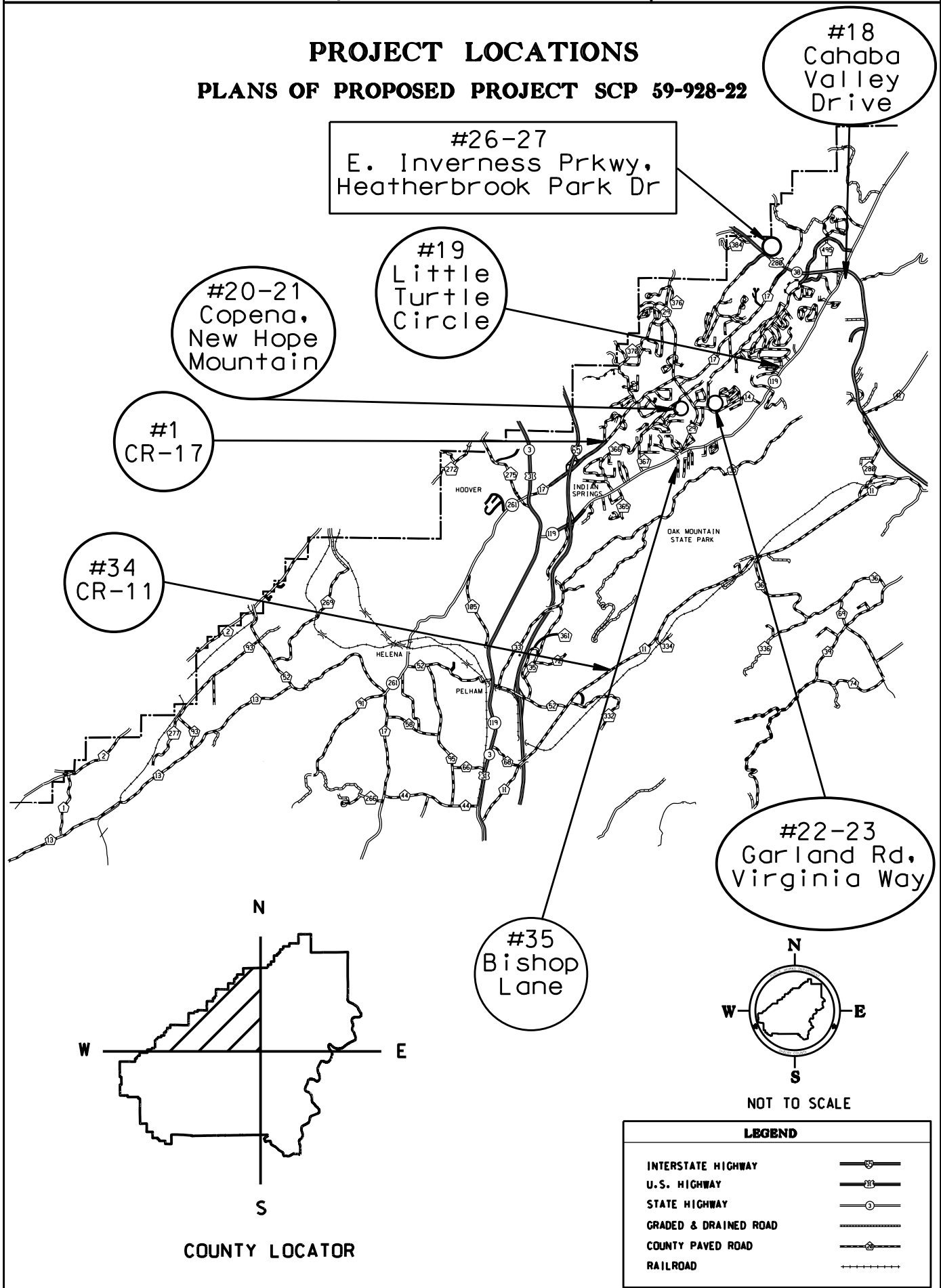
### COUNTY COMMISSIONERS

DISTRICT #1 <b>KEVIN MORRIS</b>	DISTRICT #2 <b>TOMMY EDWARDS</b>
DISTRICT #3 <b>JON PARKER</b>	DISTRICT #4 <b>WARD WILLIAMS</b>
DISTRICT #5 <b>ELWYN BEARDEN</b>	DISTRICT #6 <b>MIKE VEST</b>
DISTRICT #7 <b>LINDSEY ALLISON</b>	DISTRICT #8 <b>RICK SHEPHERD</b>
DISTRICT #9 <b>DR.ROBBIE HAYES</b>	

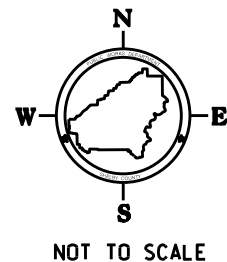
NOTE : THESE PLANS HAVE BEEN PREPARED TO  
CONFORM WITH ALABAMA DEPARTMENT  
OF TRANSPORTATION STANDARD  
SPECIFICATIONS DATED 2022

REFERENCE PROJECT NO	FISCAL YEAR	SHEET NO
SCP 59-928-22	2022	1A

# **PROJECT LOCATIONS** **PLANS OF PROPOSED PROJECT SCP 59-928-22**



COUNTY LOCATOR



LEGEND	
INTERSTATE HIGHWAY	
U.S. HIGHWAY	
STATE HIGHWAY	
GRADED & DRAINED ROAD	
COUNTY PAVED ROAD	
RAILROAD	

REFERENCE PROJECT NO	FISCAL YEAR	SHEET NO
SCP 59-928-22	2022	1B

PROJECT LOCATIONS

PLANS OF PROPOSED PROJECT SCP 59-928-22

#13-17  
Calcis  
Streets

#25  
CR-83

#2  
CR-61

LEGEND

INTERSTATE HIGHWAY

U.S. HIGHWAY

STATE HIGHWAY

GRADED & DRAINED ROAD

COUNTY PAVED ROAD

RAILROAD

N

W

E

S

NOT TO SCALE

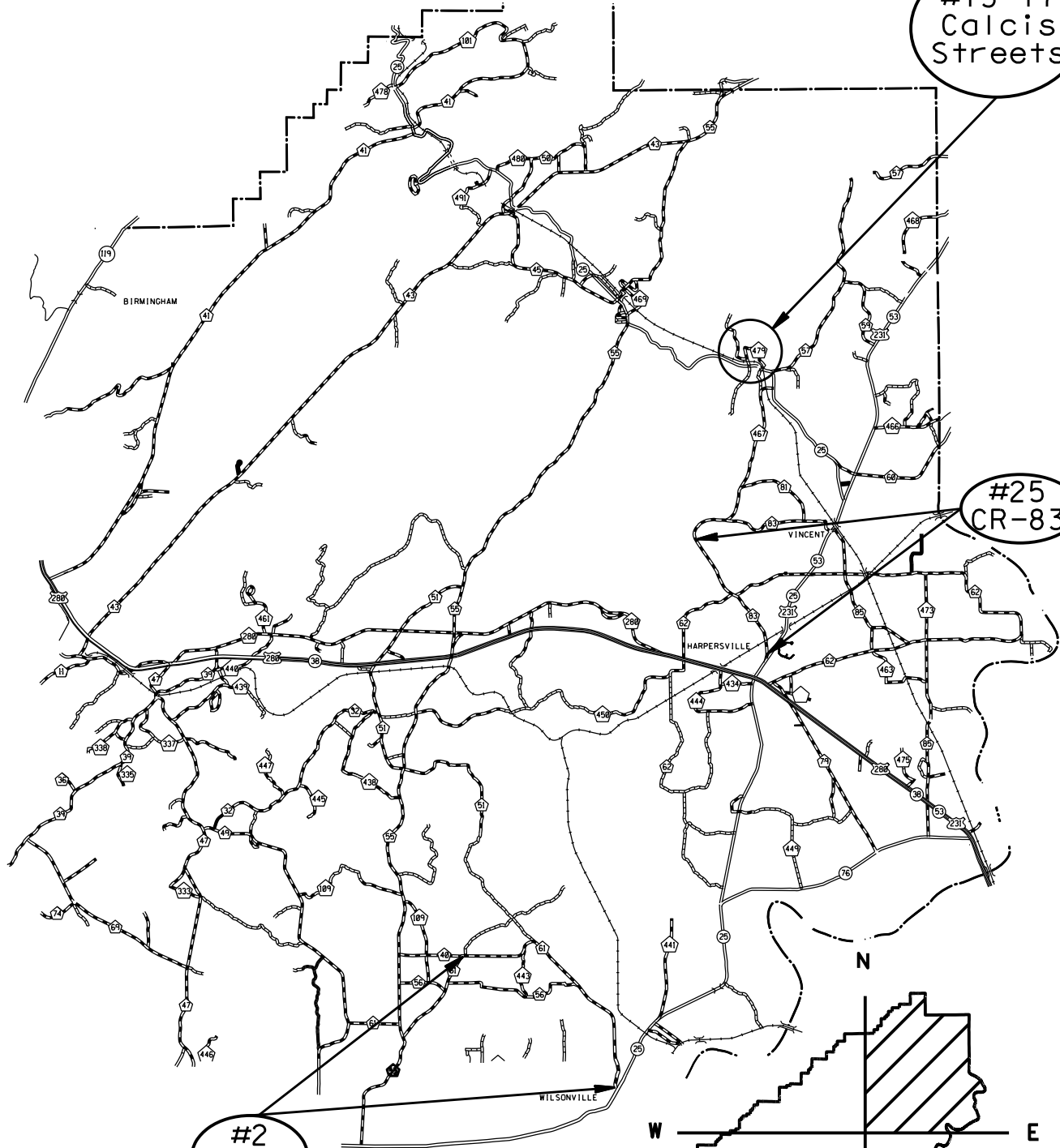
N

W

E

S

COUNTY LOCATOR



REFERENCE PROJECT NO

SCP 59-928-22

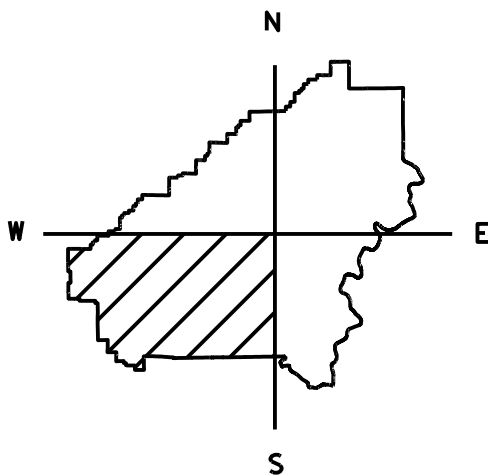
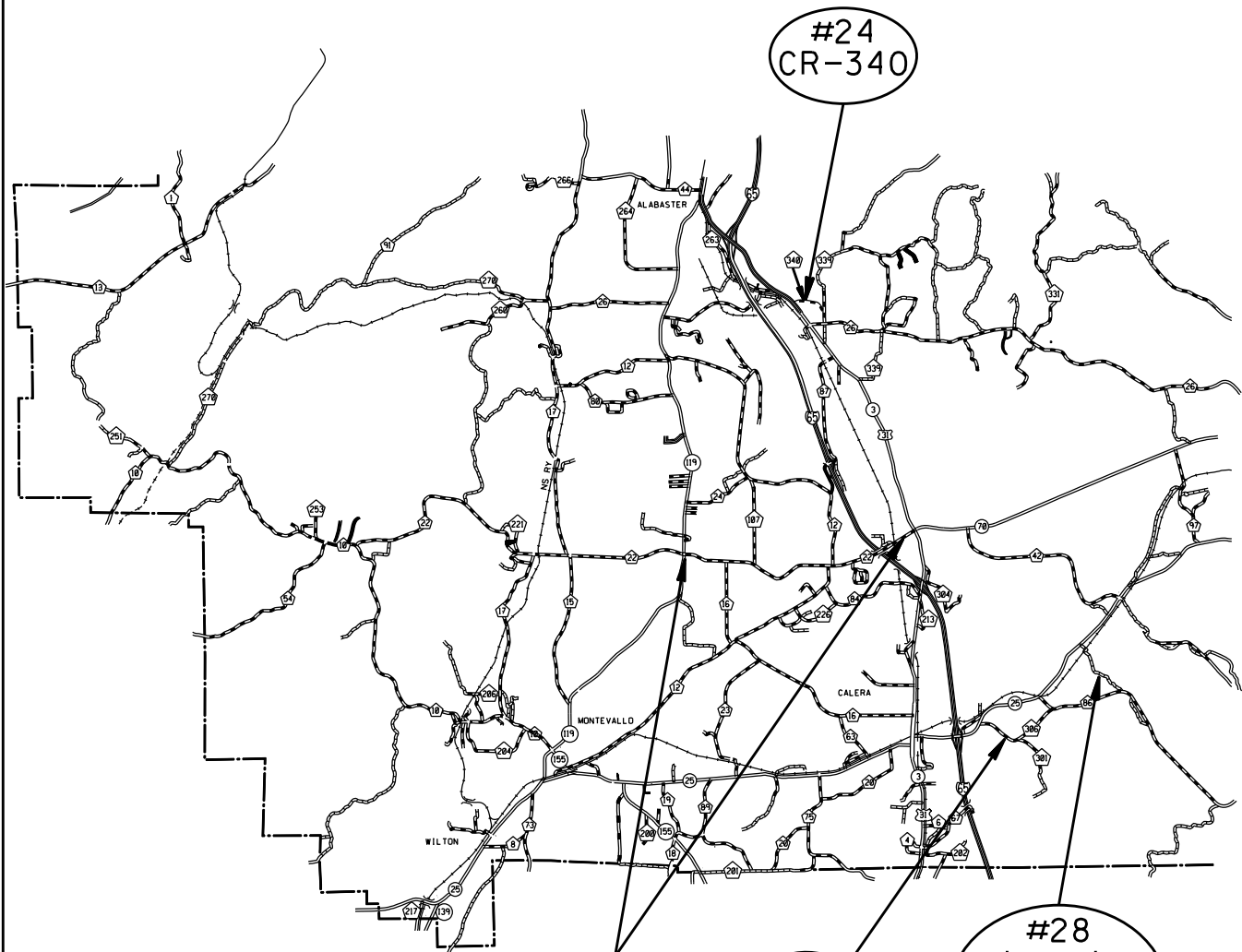
FISCAL YEAR

2022

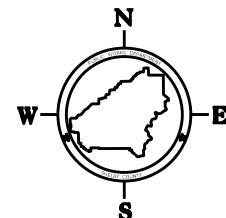
SHEET NO

1C

# **PROJECT LOCATIONS** **PLANS OF PROPOSED PROJECT SCP 59-928-22**



COUNTY LOCATOR



NOT TO SCALE

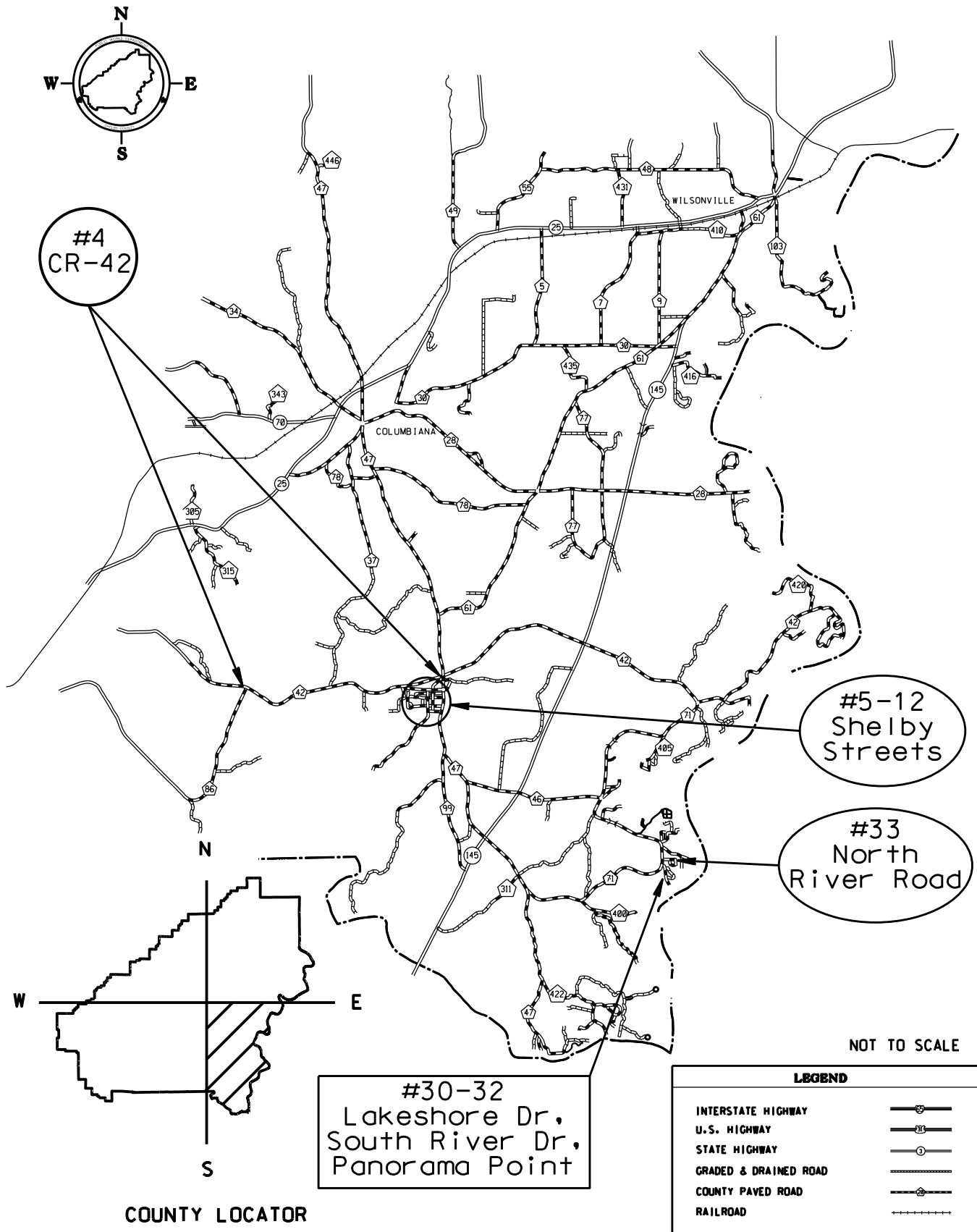
## **LEGEND**

INTERSTATE HIGHWAY	
U.S. HIGHWAY	
STATE HIGHWAY	
GRADED & DRAINED ROAD	
COUNTY PAVED ROAD	
RAILROAD	

REFERENCE PROJECT NO	FISCAL YEAR	SHEET NO
SCP 59-928-22	2022	1D

## PROJECT LOCATIONS

### PLANS OF PROPOSED PROJECT SCP 59-928-22



REFERENCE PROJECT NO	FISCAL YEAR	SHEET NO
SCP 59-928-22	2022	1E

INDEX TO SHEETS  
PROJECT NO. SCP 59-928-22  
SHELBY COUNTY

SHEET NO. 1	TITLE SHEET
SHEET NO. 1A-1D	PROJECT LOCATIONS
SHEET NO. 1E	INDEX TO SHEETS
SHEET NO. 2-2D	TYPICAL SECTIONS
SHEET NO. 2E-2F	PROJECT NOTES
SHEET NO. 2G-2H	TRAFFIC CONTROL NOTES
SHEET NO. 3	SUMMARY OF QUANTITIES
SHEET NO. 3A-3B	UNIT DESCRIPTIONS
SHEET NO. 3C-3H	SUMMARY OF QUANTITIES PER UNIT
SHEET NO. 4	TRAFFIC CONTROL PLANS

THE FOLLOWING IS A LIST OF STANDARD OR SPECIAL DRAWINGS CONTAINED IN THE STATE OF ALABAMA HIGHWAY DEPARTMENT SPECIAL AND STANDARD HIGHWAY DRAWINGS BOOKLET DATED 2022 WHICH APPLY TO THIS PROJECT:

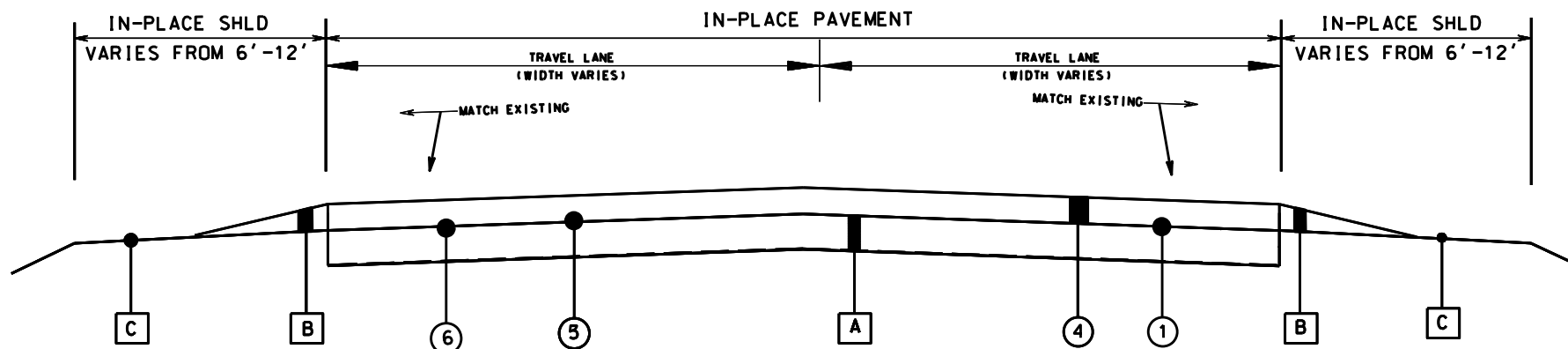
<u>PAGE NO.</u>	<u>DRAWING NO.</u>	<u>DESCRIPTION</u>
68004	TO-107	DETAILS OF INTERSECTION AND TURNOUTS
70104	197-NPL	DETAILS NO PASSING LINES - 2 LANE, TWO DIRECTION ROADWAY
68019	SSEC-1	STANDARD SUPERELEVATION OF CURVES
73504	RRX-107-2	RAILROAD CROSSING ACTIVE WARNING - SIGNS AND PAVEMENT MARKINGS
73507	RRX-107-3	DIMENSIONS FOR RAILROAD CROSSING SIGNS, SIGNALS, AND MARKINGS
70501	PM-705-1	DETAILS OF PAVEMENT MARKERS CLASS A, A-H & B
70504	PM-705-2	DETAILS SHOWING APPLICATION OF PAVEMENT MARKERS
70101	PS-701-6	DETAILS OF TRAFFIC STRIPING FOR TWO LANE HIGHWAYS
74007	TCD-100	DETAILS OF TRAFFIC CHANNELIZATION DEVICES
70301	TCM-703	PAVEMENT LEGENDS & MARKINGS (SHT 1 OF 2)
70302	TCM-703	PAVEMENT LEGENDS & MARKINGS (SHT 2 OF 2)
73030	TSD-730-11	LOOP WIRE INSTALLATION
73036	TSD-730-13	JUNCTION BOX INSTALLATION
71017	IHS-710-12	DETAILS OF ROADWAY SIGN POSTS (SMALL CHANNEL AND TUBULAR SECTION)
71032	IHS-710-21	DETAILS OF LOCATION AND MOUNTING STANDARD FLAT PANEL SIGNS ON U-CHANNEL AND TUBULAR POSTS
71069	SHS-10	REBUILD ALABAMA ACT
71092	SHS-28	STANDARD HIGHWAY SIGNS
71093	SHS-29	STANDARD HIGHWAY SIGNS
71094	SHS-30	STANDARD HIGHWAY SIGNS
71095	SHS-31	STANDARD HIGHWAY SIGNS
74007	TCD-100	DETAILS FOR TRAFFIC CHANNELIZATION DEVICES

PROJECT NOTES: 201,202,203,204,205,206,  
207,213,214,215,216,218,  
220,223,224

# TYPICAL SECTION PROJECT NO. SCP 59-928-22 SHELBY COUNTY

PROJECT NUMBER	FISCAL YEAR	SHEET NO.	LAST SHEET
SCP 59-928-22	2022	2	4

TYPICAL SECTION APPLIES TO COUNTY ROADS THAT  
SPECIFY "G" TREATMENT



## LEGEND

ITEM	UNIT	DESCRIPTION
① 401B-111	SO YD	REQ'D BITUMINOUS TREATMENT G, CRS-2 (WITH POLYMER ADDITIVE)
④ 424A-361	TON	REQ'D SUPERPAVE BITUMINOUS CONCRETE WEARING SURFACE LAYER, 3/4" MAXIMUM AGGREGATE SIZE MIX, ESAL RANGE C/D (185 LBS/SY)
⑤ 424B-656	TON	REQ'D SUPERPAVE BITUMINOUS CONCRETE UPPER BINDER LAYER, PATCHING, 1 1/2" MAXIMUM AGGREGATE SIZE MIX, ESAL RANGE C/D (440 LBS/SY)
⑥ 424B-658	TON	REQ'D SUPERPAVE BITUMINOUS CONCRETE UPPER BINDER LAYER, LEVELING, 3/4" MAXIMUM AGGREGATE SIZE MIX, ESAL RANGE C/D (165 LBS/SY)
A		IN-PLACE PAVEMENT (RETAIN)
B		SHOULDER WORK TO BE PERFORMED BY SHELBY COUNTY
C		IN-PLACE SHOULDER (RETAIN)

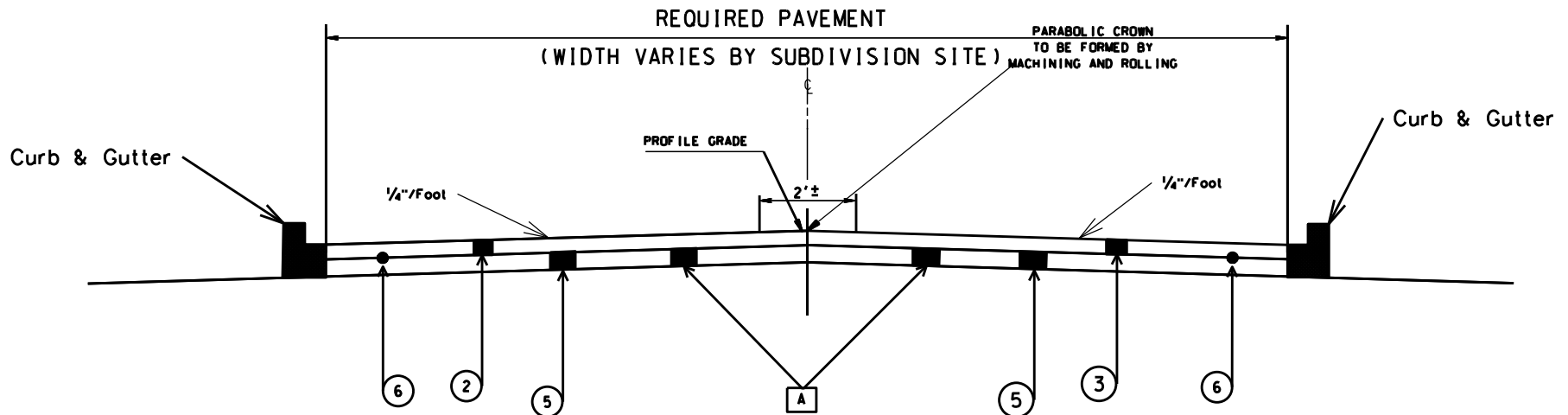
NOT TO SCALE

PROJECT NOTES: 201,204,205,206,207,  
213,217

# TYPICAL SECTION PROJECT NO. SCP 59-928-22 SHELBY COUNTY

PROJECT NUMBER	FISCAL YEAR	SHEET NO.	LAST SHEET
SCP 59-928-22	2022	2A	4

TYPICAL SECTION APPLIES TO UNITS #18,19,20,26 & 27  
REPAIRS AND SEAL LAYER



## TYPICAL SECTION UNIT FOR CURB & GUTTER PLANING EXISTING, & WEARING SURFACE FOR SUBDIVISIONS

### LEGEND

ITEM	UNIT	DESCRIPTION
② 408A-052	SO YD	REO'D PLANING EXISTING PAVEMENT, (APPROXIMATELY 1.10" THRU 2.0" THICK) (PLANE APPROXIMATELY 1.5") (FULL WIDTH OF STREETS AND CUL-DE-SACS)
③ 424A-340	TON	REO'D SUPERPAVE BITUMINOUS CONCRETE WEARING SURFACE LAYER, 1/2" MAXIMUM AGGREGATE SIZE MIX, ESAL RANGE A/B (125 LBS/SY)
⑤ 424B-656	TON	REO'D SUPERPAVE BITUMINOUS CONCRETE UPPER BINDER LAYER, PATCHING, 1 1/2" MAXIMUM AGGREGATE SIZE MIX, ESAL RANGE C/D (440 LBS/SY)
⑥ 424B-658	TON	REO'D SUPERPAVE BITUMINOUS CONCRETE UPPER BINDER LAYER, LEVELING, 3/4" MAXIMUM AGGREGATE SIZE MIX, ESAL RANGE C/D (82 LBS/SY - 150 LBS/SY)
A		IN PLACE PAVEMENT (RETAIN)



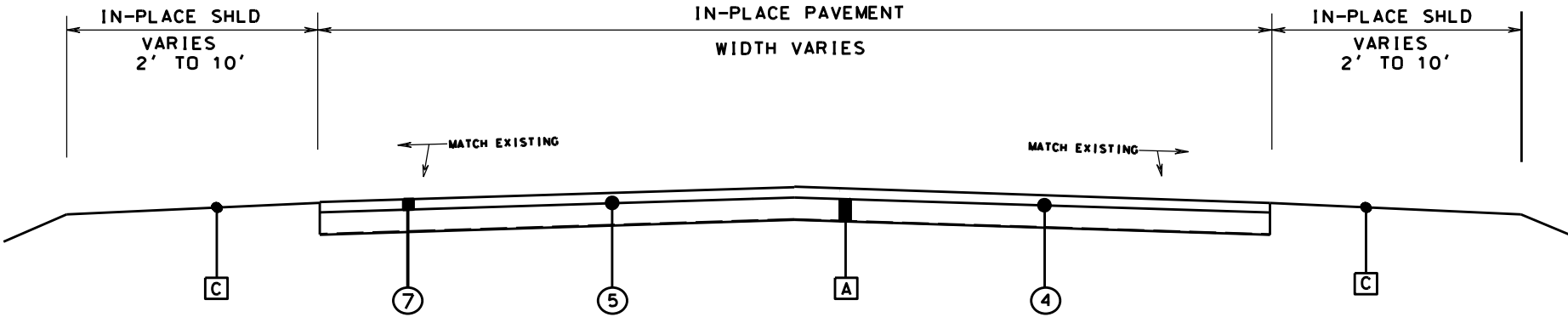
PROJECT NOTES: 201,202,203,204,205,206,  
207,210,211,213,215,216,  
217,218,220,222,223,224

TYPICAL SECTION  
PROJECT NO. SCP 59-928-22  
SHELBY COUNTY

PROJECT NUMBER	FISCAL YEAR	SHEET NO.	LAST SHEET
SCP 59-928-22	2022	2B	4

THIS TYPICAL SECTION IS FOR UNITS #28 & 35: SCRUB SEAL-W/GRANITE APPLICATION

NO CURB AND GUTTER



LEGEND

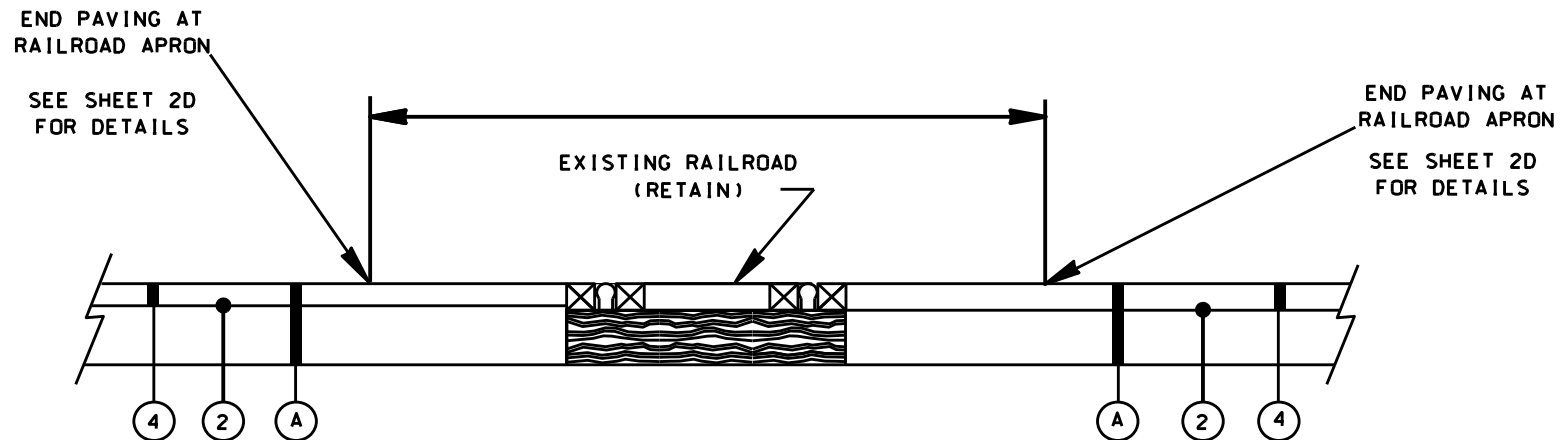
ITEM	UNIT	DESCRIPTION
④	424B-656	TON REQ'D SUPERPAVE BITUMINOUS CONCRETE UPPER BINDER LAYER, PATCHING, 1½" MAXIMUM AGGREGATE SIZE MIX, ESAL RANGE C/D (440 LBS/SY)
⑤	424B-658	TON REQ'D SUPERPAVE BITUMINOUS CONCRETE UPPER BINDER LAYER, LEVELING, ¾" MAXIMUM AGGREGATE SIZE MIX, ESAL RANGE C/D (82 LBS/SY - 150 LBS/SY)
⑦	433A-000	SOYD POLYMER MODIFIED ASPHALT REJUVENATING SCRUB SEAL (W/GRANITE)
A		IN-PLACE PAVEMENT (RETAIN)
C		IN-PLACE SHOULDER (RETAIN)

NOT TO SCALE

TYPICAL SECTION  
PROJECT NO. SCP 59-928-22  
SHELBY COUNTY

PROJECT NUMBER	FISCAL YEAR	SHEET NO.	LAST SHEET
SCP 59-928-22	2022	2C	4

SKETCH SHOWING RESURFACING AT RAILROAD CROSSING



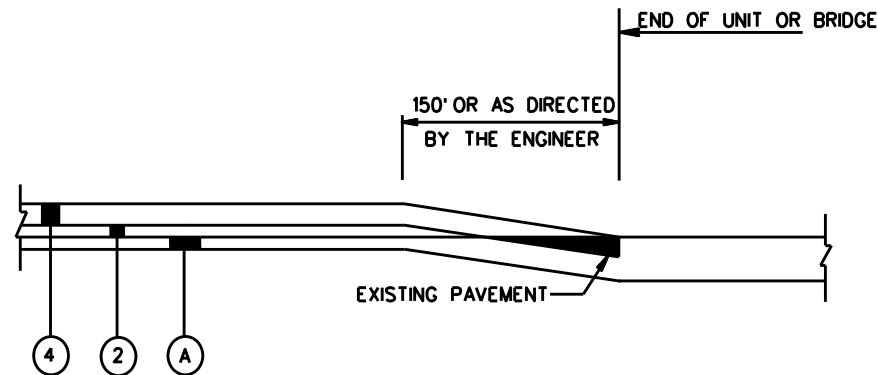
LEGEND

ITEM	UNIT	DESCRIPTION
② 408A-052	SO YD	REG'D PLANING EXISTING PAVEMENT, (APPROXIMATELY 1.10" THRU 2.0" THICK)
④ 424A-361	TON	REG'D SUPERPAVE BITUMINOUS CONCRETE WEARING SURFACE LAYER, 3/4" MAXIMUM AGGREGATE SIZE MIX, ESAL RANGE C/D (185 LBS/SY)
① A		IN-PLACE PAVEMENT RETAIN

NOT TO SCALE

TYPICAL SECTION  
PROJECT NO. SCP 59-928-22  
SHELBY COUNTY

PROJECT NUMBER	FISCAL YEAR	SHEET NO.	LAST SHEET
SCP 59-928-22	2022	2D	4



SKETCH SHOWING PAVEMENT TIE AT BEGIN/END OF UNIT,  
AT BRIDGE ENDS AND RR/XING

EXISTING PAVEMENT TO BE REMOVED IN A SUFFICIENT  
AMOUNT TO ALLOW FOR FULL DEPTH OVERLAY. THIS  
WORK TO BE A SUBSIDIARY OBLIGATION OF ITEM 424A-361  
AS DIRECTED BY THE ENGINEER

LEGEND

ITEM	UNIT	DESCRIPTION
② 408A-052	SQ YD	REQ'D PLANING EXISTING PAVEMENT (APPROXIMATELY 1.10" THRU 2.0" THICK) (PLANE APPROXIMATELY 1.50" )
④ 424A-361	TON	REQ'D SUPERPAVE BITUMINOUS CONCRETE WEARING SURFACE LAYER, $\frac{3}{4}$ " MAXIMUM AGGREGATE SIZE MIX, ESAL RANGE C/D (SEE SHEET 3A & 3B FOR APPLICATION RATES)
Ⓐ		IN-PLACE PAVEMENT (PLANE AS REQUIRED)

NOT TO SCALE

REFERENCE PROJECT NO	FISCAL YEAR	SHEET NO
SCP 59-928-22	2022	2E

PROJECT NOTES  
PROJECT NO. SCP 59-928-22  
SHELBY COUNTY

- 201: THE MINIMUM REQUIREMENTS FOR PAVING OF TURNOUTS SHALL BE AS FOLLOWS, UNLESS OTHERWISE DIRECTED BY THE ENGINEER:
- a. CITY STREETS, COUNTY ROADS AND STATE HIGHWAYS--PAVE TO THE BACK OF RADIUS WITH JOINTS MILLED BY MILLING MACHINE FULL WIDTH AS DESIGNATED BY PROJECT ENGINEER.
  - b. BUSINESS DRIVEWAYS--PAVE TO THE BACK OF THE EXISTING SHOULDER.
  - c. ALL OTHER TURNOUTS--PAVE A MINIMUM OF 3'.
  - d. PARTICULAR ATTENTION WILL BE GIVEN TO THE SLOPE OF ALL DRIVES EITHER RESIDENTIAL OR COMMERCIAL TO ASSURE EASY PASSAGE ON AND OFF THE ROADWAY. IT WILL BE THE RESPONSIBILITY OF THE CONTRACTOR TO EITHER MAKE NECESSARY ADJUSTMENTS DURING ONGOING PHASES OF PAVING OPERATION OR ADJUST AT A LATER DATE AS DIRECTED BY THE PROJECT ENGINEER.
- 202: RESURFACING OVERLAYS SHALL MATCH EXISTING SUPERELEVATION OF HORIZONTAL CURVE.
- 203: ALL SHOULDERS ON ALL UNITS SHALL BE CLIPPED AND BROOMED TO THE ENGINEER'S SATISFACTION PRIOR TO ANY AND ALL RESURFACING.
- 204: ALL EXCESS STONE WILL BE THE RESPONSIBILITY OF THE CONTRACTOR TO REMOVE FROM INTERSECTIONS, PARKING LOTS, DRIVEWAYS, AND ALL PUBLIC PROPERTIES. ALL EXCESS STONE SHALL BE REMOVED DAILY, UNLESS OTHERWISE DIRECTED BY THE PROJECT ENGINEER.
- 205: ALL TRUCK LOAD LIMITS SHALL BE IN ACCORDANCE WITH SHELBY COUNTY, TRUCK WEIGHT ORDINANCE (9 TONS PER AXLE).
- 206: ITEM 424B-658, BITUMINOUS CONCRETE PLANT MIX, LEVELING  $\frac{3}{4}$ " MAX ESAL C/D SHALL BE APPLIED AS DIRECTED BY THE PROJECT ENGINEER.
- 207: CONTRACTOR SHALL TIE BEGINNING AND ENDING OF PROJECT AND AT BRIDGE CROSSINGS AS SHOWN IN THE SKETCH ON SHEET 2D.
- 208: MOBILIZATION AND CONSTRUCTION FUEL SHALL BE SUBSIDIARY OBLIGATION OF THE CONTRACT.
- 209: EXCESS MATERIAL THAT CANNOT BE USED TO FLUSH SLOPES WITHIN A PROJECT AREA SHALL BE WASTED AS DIRECTED BY THE PROJECT ENGINEER.
- 210: CONTRACTOR IS ULTIMATELY RESPONSIBLE FOR THE CONTINUOUS AND PROPER OPERATION OF ALL EXISTING UTILITIES. THE COUNTY ENGINEER SHALL COORDINATE RELOCATION OF UTILITIES WITH THE AFFECTED UTILITY COMPANIES.
- 211: CONTRACTOR IS RESPONSIBLE FOR MAKING CONTACT WITH LOCAL WATER AUTHORITIES AND OBTAINING PERMISSION OR A METER WITH WHICH TO ACQUIRE WATER FOR USE DURING THE PROJECT.
- 212: BASE LAYER COMPACTION SHALL MEET 100% OF THE MAXIMUM THEORETICAL DENSITY OF THE MATERIAL SPECIFIED TO THE SATISFACTION OF THE COUNTY ENGINEER.
- 213: UNITS \*1-4 ARE DESIGNATED AS OUR REBUILD ALABAMA ACT PROJECT FOR THIS YEARS CONTRACT. THE APPROPRIATE REBUILD ALABAMA SIGNAGE, ALDOT STANDARD DRAWINGS 2022, RA-1, DRAWING \*SHS-10, PAGE \*71069. SHALL BE PLACED AT EACH END OF ALL PROJECT LOCATIONS PRIOR TO CONSTRUCTION. COST FOR SIGNS SHALL BE A SUBSIDIARY OF THE CONTRACT.

REFERENCE PROJECT NO	FISCAL YEAR	SHEET NO
SCP 59-928-22	2022	2F

PROJECT NOTES  
PROJECT NO. SCP 59-928-22  
SHELBY COUNTY

- 214: ITEM 405A-000 SHALL BE MECHANICALLY APPLIED TO ACHIEVE UNIFORM DISTRIBUTION. HAND APPLICATION WILL BE ALLOWED ONLY ON TURNOUTS AND INTERSECTIONS.
- 215: ANY ROADWAYS WITH A TOTAL WIDTH OF LESS THAN 20' SHALL BE PAVED USING A MATERIAL STRIKE OFF PLATE.
- 216: NO SECTION OF PAVEMENT WILL BE LEFT OVERNIGHT WITHOUT TRAFFIC STRIPING OR RAILROAD MARKINGS BEING IN PLACE. THIS INCLUDES BITUMINOUS TREATMENT "G" AND FINAL WEARING LAYER.
- 217: IT SHALL BE THE CONTRACTOR'S RESPONSIBILITY TO INVENTORY ALL IN-PLACE STRIPING, MARKINGS AND LEGENDS FOR REFERENCE TO THE LOCATIONS, SO THAT ALL REQUIRED STRIPING, MARKINGS AND LEGENDS SHALL BE PLACED BACK IN THE SAME LOCATIONS AS THEY WERE BEFORE RESURFACING OPERATIONS BEGAN. THE WORK INVOLVED IN INVENTORING AND REFERENCING SHALL BE A SUBSIDIARY OBLIGATION OF ITEM 701A-230. IF IN-PLACE STRIPING, MARKINGS AND LEGENDS DIFFER FROM REQUIREMENTS ON STANDARD DRAWINGS OR MUTCD, THE PROJECT ENGINEER SHALL BE NOTIFIED BEFORE WORK BEGINS.
- 218: ALL PATCHING SHALL BE IN ACCORDANCE WITH ITEM 410.03(c) AND SUBARTICLE 410.09(a) AND COMPLETED PRIOR TO RESURFACING. PATCHES SHALL BE A MINIMUM WIDTH OF 7'-0" AND MINIMUM DEPTH OF 4". THE EXACT LOCATION, WIDTH, LENGTH AND DEPTH SHALL BE DETERMINED BY THE ENGINEER.
- 219: IF A DROP OFF OCCURS IN A TRANSVERSE DIRECTION DURING THE CONSTRUCTION OF THIS PROJECT, THE CONTRACTOR SHALL CONSTRUCT A TEMPORARY BITUMINOUS WEDGE AS DIRECTED BY THE ENGINEER. THE WORK, IF REQUIRED, SHALL BE PAID FOR AS ITEM 424A-340 OR 424A-361 DEPENDING UPON LOCATION OF WEDGE.
- 220: TEMPORARY TRAFFIC CONTROL MARKINGS SHALL BE USED FOR STOP LINES ONLY. 4 INCH TEMPORARY STRIPE SHALL BE USED FOR A TEMPORARY CHANNELIZING STRIPE AS DIRECTED BY THE ENGINEER.
- 221: ANY DAMAGE TO IN-PLACE PAVING, CURB AND GUTTER, SIDEWALK, GRASSING ETC. SHALL BE REPAIRED BY THE CONTRACTOR TO THE SATISFACTION OF THE ENGINEER AT NO COST TO THE PROJECT.
- 222: FOR UNIT \*3, IF WORKING DURING THE DAY, THERE SHALL BE NO LANE CLOSURES ALLOWED BETWEEN THE HOURS OF 7:00-9:00 AM OR 4:00-6:00 PM UNLESS OTHERWISE DIRECTED BY THE PROJECT ENGINEER.
- 223: THE PRIME CONTRACTOR SHALL INSTALL A MINIMUM OF 70% OF THE TOTAL TONNAGE REQUIRED FOR ITEMS 424A-340 AND 424A-361 UNLESS OTHERWISE APPROVED BY THE SHELBY COUNTY ENGINEER.
- 224: ALL FINAL STRIPING SHALL BE INSTALLED WITH A SHELBY COUNTY INSPECTOR ON SITE.
- 225: UNITS \*1 & 3 SHOULD BE CONSIDERED FOR POSSIBLE NIGHT WORK DUE TO TRAFFIC VOLUMES. ALL EXTRA SIGNS, LIGHTS, OFF DUTY POLICE OR EXTRAS NEEDED FOR WORKING AT NIGHT SHALL BE THE RESPONSIBILITY OF THE CONTRACTOR AND WILL BE A SUBSIDIARY OF THE CONTRACT.
- 226: DUE TO WORK THAT WILL HAVE TO BE DONE TO THE CROSS DRAIN PIPES ALONG UNITS \*2: CR-61 AND UNIT \*3: CR-22, THE CONTRACTOR WILL DELAY ANY WORK BEING DONE TO THESE UNITS UNTIL JULY 1, 2022 TO ALLOW FOR ANY SETTLING OF AREAS WHERE ROADBED IS DISTURBED.
- 227: THE CONTRACTOR SHALL MAKE ARRANGEMENTS FOR UNIT #34. CR-11 TO BE COMPLETED BY MAY 15, 2022 OR SOONER.
- 228: THE CONTRACTOR SHALL COMPLETE THE ENTIRE PROJECT BY OCTOBER 15, 2022.

REFERENCE PROJECT NO	FISCAL YEAR	SHEET NO
SCP 59-928-22	2022	26

TRAFFIC CONTROL NOTES  
PROJECT NO. SCP 59-928-22  
SHELBY COUNTY

700. THE TRAFFIC CONTROL PLAN IS DEVELOPED IN CONFORMANCE WITH THE MANUAL ON UNIFORM TRAFFIC CONTROL DEVICES PART 6, 2009 EDITION. THE TRAFFIC CONTROL DEVICES INDICATED REPRESENT CONDITIONS KNOWN DURING PLAN DEVELOPMENT. IN THE EVENT ACTUAL PHYSICAL CONDITIONS WARRANT ADDITIONAL TRAFFIC CONTROL DEVICES, THEY SHALL BE INSTALLED IN CONFORMANCE WITH THE MUTCD PART 6 AS DIRECTED BY THE ENGINEER. COST SHALL BE PAID FOR AS A SUBSIDIARY OBLIGATION.
701. THE CONTRACTOR WILL BE PERMITTED TO DEVELOP HIS OWN TRAFFIC CONTROL PLAN TO BE USED IN LIEU OF THIS TRAFFIC CONTROL PLAN IF APPROVED BY THE ENGINEER. A CONTRACTOR DEVELOPED TRAFFIC CONTROL PLAN SHALL BE A SUBSIDIARY COST OF THE CONTRACT.
702. THE CONTRACTOR WILL ENSURE THAT ALL TRAFFIC CONTROL DEVICES ARE IN PROPER LOCATIONS AND IN GOOD CONDITION AT ALL TIMES.
703. ALL SIGNS AND BARRICADES MAY BE ADJUSTED BY THE ENGINEER FOR THE SAFETY OF THE TRAVELING PUBLIC WHEN NECESSARY.
704. ADDITIONAL SIGNS MAY BE REQUIRED IF DEEMED NECESSARY BY THE ENGINEER. ADDITIONAL ITEMS TO BE PAID FOR AS A SUBSIDIARY COST OF THE CONTRACT.
705. NO DIRECT PAYMENT WILL BE MADE FOR REMOVING, RELOCATING, OR COVERING OF IN PLACE SIGNS, BARRELS, BARRICADES, OR OTHER TRAFFIC CONTROL DEVICES AS REQUIRED IN THIS TRAFFIC CONTROL PLAN (SEE SPECIAL DRAWING NO. TCD-100 IN THE ALABAMA DEPARTMENT OF TRANSPORTATION'S SPECIAL AND STANDARD HIGHWAY DRAWINGS, 2022 EDITION). COST TO BE A SUBSIDIARY OBLIGATION OF THE CONTRACT.
706. THE QUANTITIES SHOWN ON THE TRAFFIC CONTROL PLAN SHEET ARE CONSIDERED TO BE THE MINIMUM REQUIREMENT FOR HANDLING TRAFFIC AT ANY GIVE TIME DURING CONSTRUCTION.
707. THE CONTRACTOR IS TO REMOVE, RELOCATE, OR COVER DURING CONSTRUCTION AND THEN RESET UPON COMPLETION OF A PARTICULAR SECTION ANY CONFLICTING IN-PLACE ROADWAY SIGNS AS DIRECTED BY THE ENGINEER. COST TO BE A SUBSIDIARY OBLIGATION OF THE CONTRACT.
708. ALL CONSTRUCTION SIGNS PLACED BEFORE WORK BEGINS SHALL BE COVERED WITH BLACK PLASTIC OR SOME OTHER SUITABLE MATERIAL SO THAT THE SIGNS ARE NOT VISIBLE UNTIL WORK IS IN PROGRESS.
709. ALL TRAFFIC CONTROL DEVICES SHALL BE PAID AS A SUBSIDIARY COST OF THE CONTRACT.
710. ALL BLACK ON ORANGE CONSTRUCTION SIGNS SHALL BE FABRICATED USING TYPES IV OR VIII FLUORESCENT ORANGE REFLECTIVE SHEETING MATERIAL FOR THE SIGN BACKGROUND.
711. DURING NON-WORKING HOURS NO EQUIPMENT OR MATERIAL SHALL BE PARKED OR STORED CLOSER THAN 30 FEET TO THE EDGE OF ANY ROADWAY CARRYING TRAFFIC. WHEN THIS IS NOT PRACTICAL, IT SHALL BE PLACED IN AN AREA DESIGNATED BY THE ENGINEER AND DELINEATED BY REFLECTORIZED DRUMS. THIS INCLUDES STORAGE OF TRAFFIC CONTROL DEVICES SUCH AS TRAILER MOUNTED OR OTHER TEMPORARY SIGNS, BARRICADES, DRUMS, ETC., WHICH ARE NOT IN USE DURING NON-WORKING HOURS.

REFERENCE PROJECT NO	FISCAL YEAR	SHEET NO
SCP 59-928-22	2022	2H

TRAFFIC CONTROL NOTES  
PROJECT NO. SCP 59-928-22  
SHELBY COUNTY

- 712: WHERE THE LOCATION OF A REQUIRED SIGN FALLS IN A DRIVEWAY, SIDEWALK, BRIDGE, ETC., OR WHERE THE VISIBILITY OF A SIGN IS LIMITED TO THE TRAVELING PUBLIC, THE LOCATION SHALL BE ADJUSTED AS DIRECTED BY THE ENGINEER.
- 713: THE CONTRACTOR SHALL PLACE ALL ADVANCE WARNING SIGNS BEFORE PROCEEDING WITH THIS WORK.
- 714: ALL VEHICLES, EQUIPMENT, PERSONNEL (EXCEPT FLAGGERS), AND THEIR ACTIVITIES, ARE RESTRICTED AT ALL TIMES TO ONE SIDE OF THE PAVEMENT UNLESS OTHERWISE AUTHORIZED BY THE ENGINEER.
- 715: CONTRACTOR SHALL MAINTAIN AT LEAST ONE ACCESS TO BUSINESSES AND RESIDENCES DURING ALL PHASES OF CONSTRUCTION.
- 716: CONSTRUCTION SIGNS MOUNTED ON TEMPORARY SUPPORTS SHALL BE MOUNTED AT A MINIMUM HEIGHT OF 5 FEET.
- 717: FLAGGERS SHALL BE PROPERLY ATTIRED, EQUIPPED WITH STAFF MOUNTED STOP/SLOW PADDLES IN SIGHT OF EACH OTHER, OR HAVE DIRECT COMMUNICATION AT ALL TIMES. FLAGGER STATION LOCATION MAY BE VARIED FROM THOSE SHOWN BASED ON ROADWAY CONDITIONS AT THE TIME OF THE LANE CLOSURE.
- 718: FLAGGERS ARE TO BE USED WHEN DIRECTED BY THE ENGINEER. SIGNS SHALL BE PLACED AT THE APPROPRIATE TIME, AND SHALL BE COVERED OR REMOVED WHEN FLAGGERS ARE NOT ON DUTY AND DURING NON-WORKING HOURS.
- 719: FOR MOVING OPERATIONS, THE TRAFFIC CONES MAY BE DELETED IF THE FLAGGERS ARE IN SIGHT OF EACH OTHER, OR IF A PILOT CAR IS USED ON A TWO LANE ROADWAY.

SUMMARY OF QUANTITIES	
SCP 59-928-22	

TOTAL	ITEM NO	UNIT	DESCRIPTION
286249	401B-111	Sq Yd	Bituminous Treatment G, CRS-2 (With Polymer Additive)
7932	405A-000	Gallon	Tack Coat
68893	408A-052	Sq Yd	Planing Existing Pavement (Approximately 1.10" thru 2.0")
6	410H-000	Each	Material Remixing Device
474	424A-340	Ton	Bituminous Concrete Wearing Surface Layer, 1/2" Max Agg, ESAL A/B
33880	424A-361	Ton	Bituminous Concrete Wearing Surface Layer, 3/4" Max Agg, ESAL C/D
1321	424A-370	Ton	Bituminous Concrete Wearing Surface Layer, Widening, 3/4" Max Agg, ESAL C/D
3125	424B-656	Ton	Bituminous Concrete Upper Binder Layer, Patching, 1 1/2" Max Agg, ESAL C/D
8371	424B-658	Ton	Bituminous Concrete Upper Binder Layer, Leveling, 3/4" Max Agg, ESAL C/D
26	428A-001	Mile	Scoring Bituminous Pavement Surface
19067	433A-000	Sq Yd	Scrub Seal
13	701A-007	Mile	Solid White, Class 1, Type A Traffic Stripe (5" Wide)
2	701A-011	Mile	Broken Yellow, Class 1, Type A Traffic Stripe (5" Wide)
10	701A-016	Mile	Solid Yellow, Class 1, Type A Traffic Stripe (5" Wide)
45	701A-227	Mile	Solid White, Class 2, Type A Traffic Stripe, (5" Wide)
42	701A-230	Mile	Solid Yellow, Class 2, Type A Traffic Stripe, (5" Wide)
13	701A-244	Mile	Broken Yellow, Class 2, Type A Traffic Stripe (5" Wide)
6247	701B-207	Lin Ft	Dotted, Class 2, Type A Traffic Stripe
22	701C-002	Mile	Broken Temporary Traffic Stripe (Paint)
124	701C-003	Mile	Solid Temporary Traffic Stripe (Paint)
2188	701G-146	Lin Ft	Solid White, Class W, Type A Traffic Stripe (5" Wide)
2188	701G-154	Lin Ft	Solid Yellow, Class W, Type A Traffic Stripe (5" Wide)
4376	701H-002	Lin Ft	Solid Traffic Stripe Removed (Tape)
12688	703A-002	Sq Ft	Traffic Control Markings, Class 2, Type A
1836	703B-002	Sq Ft	Traffic Control Legends, Class 2, Type A
12688	703D-002	Sq Ft	Temporary Traffic Control Markings
715	705A-030	Each	Pavement Markers, Class A-H, Type 2-C
925	705A-032	Each	Pavement Markers, Class A-H, Type 1-B
2904	705A-037	Each	Pavement Markers, Class A-H, Type 2-D
885	705A-038	Each	Pavement Markers, Class A-H, Type 2-E
4	742A-001	Each	Portable Changeable Message Sign, Type 2

SCP 59-928-22

2022

W



# UNIT DESCRIPTIONS COUNTY NAMED AND NUMBERED ROUTES

UNIT #	NAME / ROAD #	DESCRIPTION	LENGTH	WIDTH	COMMENT
			FT	FT	
1	CR-17	Valleydale Rd between North Bnd on ramp at I-65 to just South of Lakeside Dr.	7175	Varies	Plane existing full width, Patch, Spot Level, Seal 185# 3/4" mix, Restripe
2	CR-61	North off SR-25 in Wilsonville to CR-40	25200	20	Patch, "G" treat, Spot Level, Seal 185# 3/4" Mix, Restripe
3	CR-22	West off US-31 at end of SR-70 to intersection with SR-119	23000	22-36	Patch, "G" treat, Spot Level, Seal 185# 3/4" mix, Restripe
4	CR-42	Between CR-86 to CR-47 in Shelby	19150	22	Patch, "G" treat, Spot Level, Seal 185# 3/4" mix, Restripe
5	Evergreen Road	West off CR-47 in Shelby to CR-307	2725	14-19	Patch, "G" treat, Spot Level, Seal 185# 3/4" mix, Restripe
6	Huntwood Road	West off CR-47 in Shelby to Heritage Road	3315	14-16	Patch, "G" treat, Spot Level, Seal 185# 3/4" mix, Restripe
7	CR-308	West off CR-47 in Shelby to CR-42	3760	20	Patch, "G" treat, Spot Level, Seal 185# 3/4" mix, Restripe
8	Marigold Road	Loop East off CR-47 just South of CR-42	2105	14	Patch, "G" treat, Spot Level, Seal 185# 3/4" mix
9	CR-307	West off CR-47 in Shelby to School Road	3210	19-20	Patch, "G" treat, Spot Level, Seal 185# 3/4" mix, Restripe
10	CR-302	West off CR-47 in Shelby to School Road	3502	18	Patch, "G" treat, Spot Level, Seal 185# 3/4" mix, Restripe
11	School Road	South off CR-42 near Old Iron Works to roads end	2282	18	Patch, "G" treat, Spot Level, Seal 185# 3/4" mix
12	Fernbrook Lane	East off CR-47 in Shelby to end of asphalt	680	18	Patch, "G" treat, Spot Level, Seal 185# 3/4" mix
13	CR-479	Loop of SR-25 in Calcis	4425	16	Patch, "G" treat, Spot Level, Seal 185# 3/4" mix
14	CR-484	Off CR-479 in Calcis to roads end	3914	16	Patch, "G" treat, Spot Level, Seal 185# 3/4" mix
15	Keller Drive	Off CR-479 in Calcis to roads end	1056	16	Patch, "G" treat, Spot Level, Seal 185# 3/4" mix
16	Keller Lane	Off CR-479 in Calcis to roads end	1020	16	Plane existing full width, Patch, Spot Level, 185#3/4" Mix (Consider Night Work)
17	Mount Canaan Circle	Loop off CR-484 in Calcis	1357	16	Patch, "G" treat, Spot Level, Seal 185# 3/4" mix
18	Cahaba Valley Drive	East off SR-119 just South of US-280	914	24	Mill full width, Seal 185# 1/2" Mix, 80' Cul-de-sac
19	Little Turtle Circle	Off Little Turtle Drive in Broken Bow South off SR-119	340	23	Mill full width, Seal 185# 1/2" Mix, 80' Cul-de-sac
20	Copena Drive	East off Indian Crest in the Indian Forest Subdivision area	220	24	Patch 660#, Seal185# 1/2" Mix

SCP 59-928-22

2022

3A

REFERENCE PROJECT NO

FISCAL YEAR

SHEET NO

PROJECT NOTES:

# UNIT DESCRIPTIONS COUNTY NAMED AND NUMBERED ROUTES

UNIT #	NAME / ROAD #	DESCRIPTION	LENGTH	WIDTH	COMMENT
			FT	FT	
21	New Hope Mountain	Indian Wood Forest Subdivision off Indian Crest Drive CR-366	140	9	Patch designated area 440#, Seal 185# 1/2" Mix
22	Garland Road	North off CR-14 East of CR-29, Caldwell Mill Road	1200	14	Spot Level, Seal 200# 3/4" Mix
23	Virginia Way	North off CR-14 East of CR-29, Caldwell Mill Road	650	12	Spot Level, Seal 200# 3/4" Mix
24	CR-340	West off US-31 in Saginaw South of CR-26 to CR-339 Massey Road	3630	21	Patch, "G" treat, Spot Level, Seal 185# 3/4" mix, Restripe
25	CR-83	North off US-231 North of Harpersville to joint near Blue Springs Road	14250	21	Patch, "G" treat, Spot Level, Seal 185# 3/4" mix, Restripe
26	East Inverness Parkway	North off US-280 to joint at Kenley Way	2000	25	Mill full width, Spot Level, Seal 185# 3/4" Mix, Restripe
27	Heatherbrook Park Drive	East off East Inveness Parkway	500	22	Mill full width, Seal 185# 3/4" Mix 80' Cul-de-sac
28	Leach Cemetary Road	East off SR-25 South of I-65 in Calera to CR-86	6330	20	Patch, Spot Level, Scrub Seal-W/Granite, Restripe
29	CR-306	East off SR-25 South of I-65 in Calera to CR-86	8542	20	Patch, "G" treat, Spot Level, Seal 185# 3/4" mix, Restripe
30	Lakeshore Drive	East off CR-71 Lay Lake at Lacoosa Marina	2200	18	Spot Level, Seal 185# 3/4" Mix, Restripe
31	South River Drive	Loop off Lakeshore Drive at Lay Lake	2448	18	Spot Level, Seal 185# 3/4" Mix
32	Panorama Point	Off South River Drive	941	14	Spot Level, Seal 185# 3/4" Mix
33	North River Road	East off CR-71 North of Lacoosa Marina	2121	18	Spot Level, Seal 185# 3/4" Mix, Restripe
34	CR-11	Between CR-52 and CR-36	29747	28	Restripe with Class 1 Paint, replace pavement Markers and Score both edges of roadway and center line.
35	Bishop Lane	East off SR-119 just South of CR-29	2800	14-16	Scrub Seal- W/Granite

SCP 59-928-22

REFERENCE PROJECT NO

2022

FISCAL YEAR

3B

SHEET NO

# SUMMARY OF QUANTITIES

REQUIRED ASPHALT RESURFACING												
CONTRACT UNIT		401B-111 BITUMINOUS SURFACE TREATMENT TYPE "C", CRS-2 (WITH POLYMER ADDITIVE)	405A-000 TACK COAT	408A-052 PLANING EXISTING PAVEMENT (2" DEPTH)	410H-000 MATERIAL REMIXING DEVICE	424A-340 BITUMINOUS WEARING SURFACE 1 1/2" MAX AGG ESAL A/B	424A-361 BITUMINOUS WEARING SURFACE 3/4" MAX AGG ESAL C/D	424A-370 BITUMINOUS WEARING SURFACE (WIDENING) 3/4" MAX AGG ESAL C/D	424B-656 BITUMINOUS UPPER BINDER LAYER (PATCHING) 1 1/2" MAX AGG ESAL C/D	424B-658 BITUMINOUS UPPER BINDER LAYER (LEVELING) 3/4" MAX AGG ESAL C/D	428A-001 SCORING BITUMINOUS PAVEMENT SURFACE	433A-000 SCRUB SEAL
		SOYD	GAL	SOYD	EACH	TON	TON	TON	TON	TON	MILE	SOYD
1	CR-17		2484	49685	1		4596	203	250	1118		
2	CR-61	56000	200		1		5180	100	200	1260		
3	CR-22	58126	200	4800	1		5377	545	200	1308		
4	CR-42	46810	200		1		4394	100	750	1053		
5	Evergreen Road	5450	20				504			123		
6	Huntwood Road	7015	20				649			158		
7	CR-308	8356	40				773			188		
8	Marigold Road	3582	20				331			81		
9	CR-307	6090	40				563			137		
10	CR-302	7124	40				659			160		
11	School Road	4824	30				446			109		
12	Fernbrook Lane	1360	10				126			31		
13	CR-479	7867	20				728		25	177		
14	CR-484	6958	20				644		25	157		
15	Keller Drive	1877	40				174		50	42		
16	Keller Lane	1813	40				168		50	41		
17	Mount Canaan Circle	2412	40				223		25	54		
18	Cahaba Valley Drive		122	3000		278						
19	Little Turtle Circle		45	1410		130						
20	Copena Drive		30	600		54			120			

NOTE: UNLESS OTHERWISE NOTED IN THIS PLAN SET OR DIRECTED BY THE PROJECT ENGINEER, PLACEMENT RATES FOR PATCHING AREAS SHALL BE 440#/SY AND LEVELING SHALL BE 165#/SY

COUNTY PROJECT NUMBER  
SCP 59-928-22

FISCAL YEAR  
2022

SHEET NO  
3C

## COUNTY PROJECT NUMBER

SCP 59-928-22

FISCAL YEAR

2022

**SHEET NO**

3D

REQUIRED ASPHALT RESURFACING												
CONTRACT UNIT		401B-111 BITUMINOUS SURFACE TREATMENT TYPE "G". CRS-2 (WITH POLYMER ADDITIVE)	405A-000 TACK COAT	408A-052 PLANING EXISTING PAVEMENT (2" DEPTH)	410H-000 MATERIAL REMIXING DEVICE	424A-340 BITUMINOUS WEARING SURFACE 1/2" MAX AGG ESAL A/B	424A-361 BITUMINOUS WEARING SURFACE 3/4" MAX AGG ESAL C/D	424A-370 BITUMINOUS WEARING SURFACE (WIDENING) 3/4" MAX AGG ESAL C/D	424B-656 BITUMINOUS UPPER BINDER LAYER (PATCHING) 1 1/2" MAX AGG ESAL C/D	424B-658 BITUMINOUS UPPER BINDER LAYER (LEVELING) 3/4" MAX AGG ESAL C/D	428A-001 SCORING BITUMINOUS PAVEMENT SURFACE	433A-000 SCRUB SEAL
		SOYD	GAL	SOYD	EACH	TON	TON	TON	TON	TON	MILE	SOYD
21	New Hope Mountain		10			12			30			
22	Garland Road		93				190			40		
23	Virginia Way		43				90			20		
24	CR-340	8470	424	550			785		200	190		
25	CR-83	33133	1663		1		3155	125	500	745		
26	East Inverness Parkway		278	7148			661	70		100		
27	Heatherbrook Park Drive		61	1700			160	18				
28	Leach Cemetary Road								100	315		14067
29	CR-306	18982	949		1		1915	160	600	427		
30	Lakeshore Drive		220				410			100		
31	South River Drive		245				433			110		
32	Panorama Point		73				135			33		
33	North River Road		212				392			95		
34	CR-11										26	
35	Bishop Lane											5000
	TOTALS:	286249	7932	68893	6	474	33880	1321	3125	8371	26	19067

REFERENCE PROJECT NO
----------------------

## FISCAL YEAR

SHEET NO

2022

3E

[illegible]

## SUMMARY OF QUANTITIES STRIPING

[illegible]

REFERENCE PROJECT NO.
-----------------------

**SCP 59-928-22**

FISCAL YEAR

2022

SHEET NO

3F

## SUMMARY OF QUANTITIES FOR TRAFFIC CONTROL MARKINGS, LEGENDS AND PAVEMENT MARKERS

[illegible]

REFERENCE PROJECT NO
----------------------

FISCAL YEAR

SHEET NO

SCP 59-928-22

2022

36

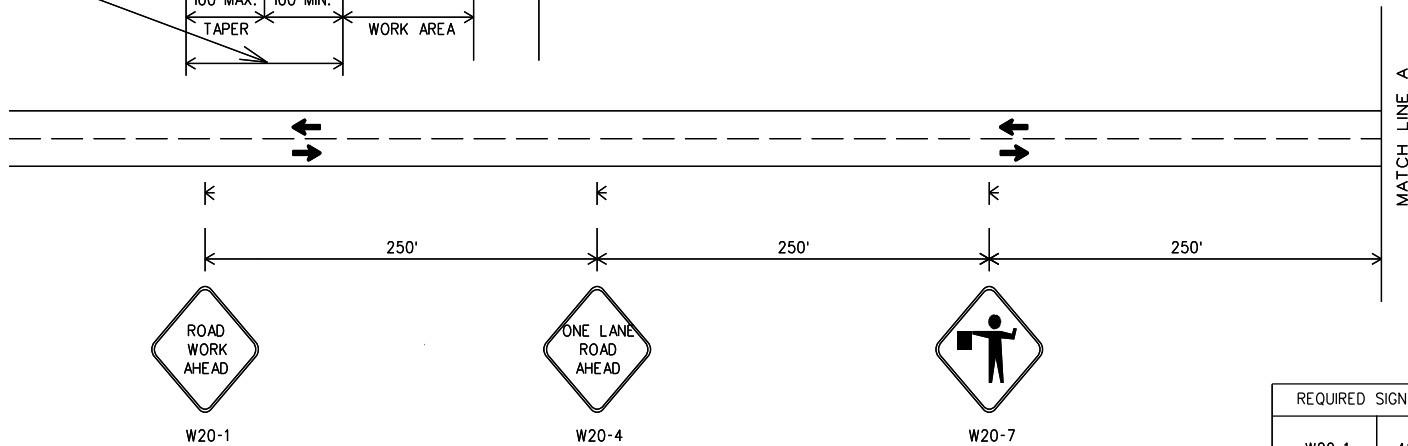
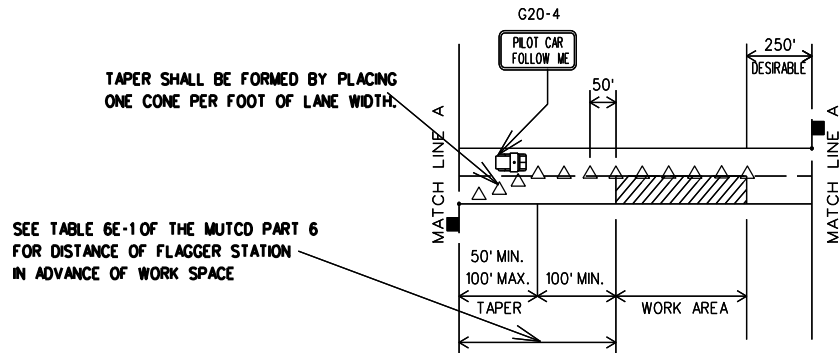
REFERENCE PROJECT NO	FISCAL YEAR	SHEET NO
SCP 59-928-22	2022	3H

		TRAFFIC CONTROL MARKINGS. CLASS 2. TYPE A	TRAFFIC CONTROL LEGENDS. CLASS 2. TYPE A	TEMPORARY TRAFFIC CONTROL MARKINGS (PAINT)	PAVEMENT MARKERS. CLASS A-H. TYPE 2-C	PAVEMENT MARKERS. CLASS A-H. TYPE 1-B	PAVEMENT MARKERS. CLASS A-H. TYPE 2-D	PAVEMENT MARKERS. CLASS A-H. TYPE 2-E	PORTABLE CHANGEABLE MESSAGE SIGN. TYPE 2
UNIT #	COUNTY ROAD # OR STREET	SQ.FT.	SQ.FT.	SQ.FT.	EACH	EACH	EACH	EACH	EACH
		703A-002	703B-002	703D-002	705A-030	705A-032	705A-037	705A-038	724A-001
21	New Hope Mountain								
22	Garland Road	32		32					
23	Virginia Way	24		24					
24	CR-340	52		52		19	193		
25	CR-83	272	281	272		24	300		
26	East Inverness Parkway	436	68	436		24	50	12	
27	Heatherbrook Park Drive								
28	Leach Cemetary Road	244	137	244		30	158		
29	CR-306	402	68	402	18	36	147		
30	Lakeshore Drive	48		48			55		
31	South River Drive	48		48					
32	Panorama Point	24		24					
33	North River Road	48		48			53		
34	CR-11				20		743	320	
35	Bishop Lane								
	TOTALS:	12688	1836	12688	715	925	2904	885	4

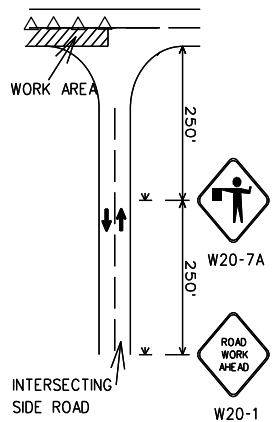


# TRAFFIC CONTROL PLAN SHEET

## TWO LANE HIGHWAY, ONE LANE CLOSURE



REQUIRED SIGN SIZES	
W20-1	48" X 48"
W20-4	48" X 48"
W20-7	48" X 48"
G20-4	36" X 18"



### TRAFFIC CONTROL FOR INTERSECTING SIDE ROADS WITHIN WORK AREA

NOTE: THE W20-1 AND W20-7A SIGNS TO BE USED ON INTERSECTING ROADS SHALL BE 36"X36" IN SIZE. THE TEMPORARY MOUNTED W20-1 ROAD WORK AHEAD SIGN SHOWN ON THE SIDE ROAD WILL NOT BE REQUIRED IF ONE IS ALREADY POST MOUNTED ON THE SIDE STREET.

#### LEGEND

- TEMPORARY MOUNTED SIGN
- POST MOUNTED SIGN
- CONE WITH BALAST
- FLAGGER

DESIGN BUREAU SPECIAL DRAWING DETAILS FOR TRAFFIC CONTROL FOR RESURFACING TWO LANE HIGHWAYS		
DRAWN BY: _____	SPECIAL PROJECT DETAIL	INDEX NO 2022
DATE DRAWN: _____	SHEET TITLE	ROUTE
		VARIOUS

NOT TO SCALE

REFERENCE PROJECT NO  
SCP 59-928-22

FISCAL YEAR  
2022

SHEET NO  
4