



Request for Proposals

- 1. Synthetic Field Turf Removal – Field 1**
- 2. Synthetic Field Turf Removal – Field 2**
- 3. Synthetic Sports Turf Groomer**
- 4. Interior Fencing Removal**
- 5. Sports Netting Removal**
- 6. LED Lighting Removal**

The Shelby County Commission provides services to residents of Shelby County through various operational units. In order to provide the best possible customer service, Shelby County is currently repurposing a property on US280 that will result the demolition of a 45,000 square foot building that currently has synthetic field turf within an interior chain link fence with sports netting under LED lighting within the climate controlled building. Shelby County desires responsive bidders to provide a proposal for to purchase and remove the interior assets. This Request for Proposals (RFP) is divided into sections by the asset with responses for individual sections or the entire lot of materials.

Shelby County desires that the successful respondent/respondents proceed with the project for purchase and removal as follows:

- The Synthetic Field Turf will be available for removal on or after November 20, 2019. All turf must be removed by December 5, 2019 unless an extension is approved by Shelby County.
- The Interior Fencing, Interior Boundary Wall, and Sports Netting LED lighting will be available for removal on December 6, 2019 and must be removed by December 12, 2019 unless an extension is approved by Shelby County.
- The LED Lighting will be available for removal on December 13, 2019 and must be removed by December 20, 2019 unless an extension is approved by Shelby County.

Site Description

Shelby County owns an approximately 45,000 square foot climate controlled building located at 19220 Highway 280, Birmingham, AL 35242. Within the building, there are two synthetic turf fields enclosed within chain link fencing and sports netting that extends to the ceiling of the building. The facility is illuminated with High Bay LED lighting.

Asset Description

The proposed project will consist of providing bid prices for the removal and purchase of the following assets that were installed new in 2016:

1. **Synthetic Field Turf Removal- Field 1** - Approximately 16,933sf of TrueGrass XP 42 Sports Turf Grass was installed on two identical sized indoor fields in the complex. There are 25 rolls x 15' wide installed, seeded and graded with ground rubber crumbles. There is approximately 420lf of black, plastic (2x4) boarder to contain the rubber crumbles. (see Field and Turf Layout diagrams) Attic stock available includes a 500lb sack of rubber crumbles, a 15'x33' turf roll and several other miscellaneous cut off rolls. (see pics)
2. **Synthetic Field Turf Removal- Field 2** - Approximately 16,933sf of TrueGrass XP 42 Sports Turf Grass was installed on two identical sized indoor fields in the complex. There are 25 rolls x 15' wide installed, seeded and graded with ground rubber crumbles. (see Field and Turf Layout diagrams). There is approximately 420lf of black, plastic (2x4) boarder to contain the rubber crumbles.
3. **GreensGroomer Electric Lift Model 926 Synthetic Sports Turf Groomer** (practically new) is also available (see attached specifications)
4. **Interior Fencing Removal** - Approximately 840lf interior field fencing. 8' high, black, 6 gauge chain link metal fencing. There are 5 each- 4' man gates and 3 each- 8' wide double drive gates. Fence posts were grouted into the concrete slab. (see diagram and pics)
5. **Sports Netting Removal**-There is approximately 562 lf of Sports Area Netting suspended from the steel building structure. Purchased from BSN Sports. Mesh is black, #36 nylon, 1-3/4" mesh, 3-strand twisted. Boarder rope and transverse riblines are black 3-strand twisted polypropylene. Panel sizes are as follows: 2 each-30'h x 95', 2 each-30'h x 52', 2 each-30'h x 11, 2 each-30'h x 134', 4 each-30' x 24', 2 each-26'h x 138', 2 each-30'h x 84'. (see diagram and pics)
6. **LED Lighting Removal**- There are 52 each VersaBay High Bay / LED luminaires by Columbia Lighting. Catalog Number: LLHV4-4OU-WST-EDU-C6TL152-CPWG. Model: LLVH, Size: 4', Color Temp: 4000, Lumen Output: Ultra High, Reflector: Wide Distribution, Uplight: None, Driver: 0-10V Dimming, Voltage: 120V-277V, Options:6' Cord with twist-lock plug 15A and Clear Polycarbonate Lens and Flat Wire Guard.

Evaluation Criteria

At the conclusion of this proposal process, Shelby County intends to sell the assets to the highest bidder(s) that are able to meet the criteria. Shelby County reserves the right to decline all proposals for any single asset or multiple assets. Proposals will be evaluated based on 1) purchase price and 2) ability to remove by the following dates:

- The Synthetic Field Turf will be available for removal on or after November 20, 2019. All turf must be removed by December 5, 2019 unless an extension is approved by Shelby County.
- The Interior Fencing, Interior Boundary Wall, and Sports Netting LED lighting will be available for removal on December 6, 2019 and must be removed by December 12, 2019 unless an extension is approved by Shelby County.
- The LED Lighting will be available for removal on December 13, 2019 and must be removed by December 20, 2019 unless an extension is approved by Shelby County.

Submittals

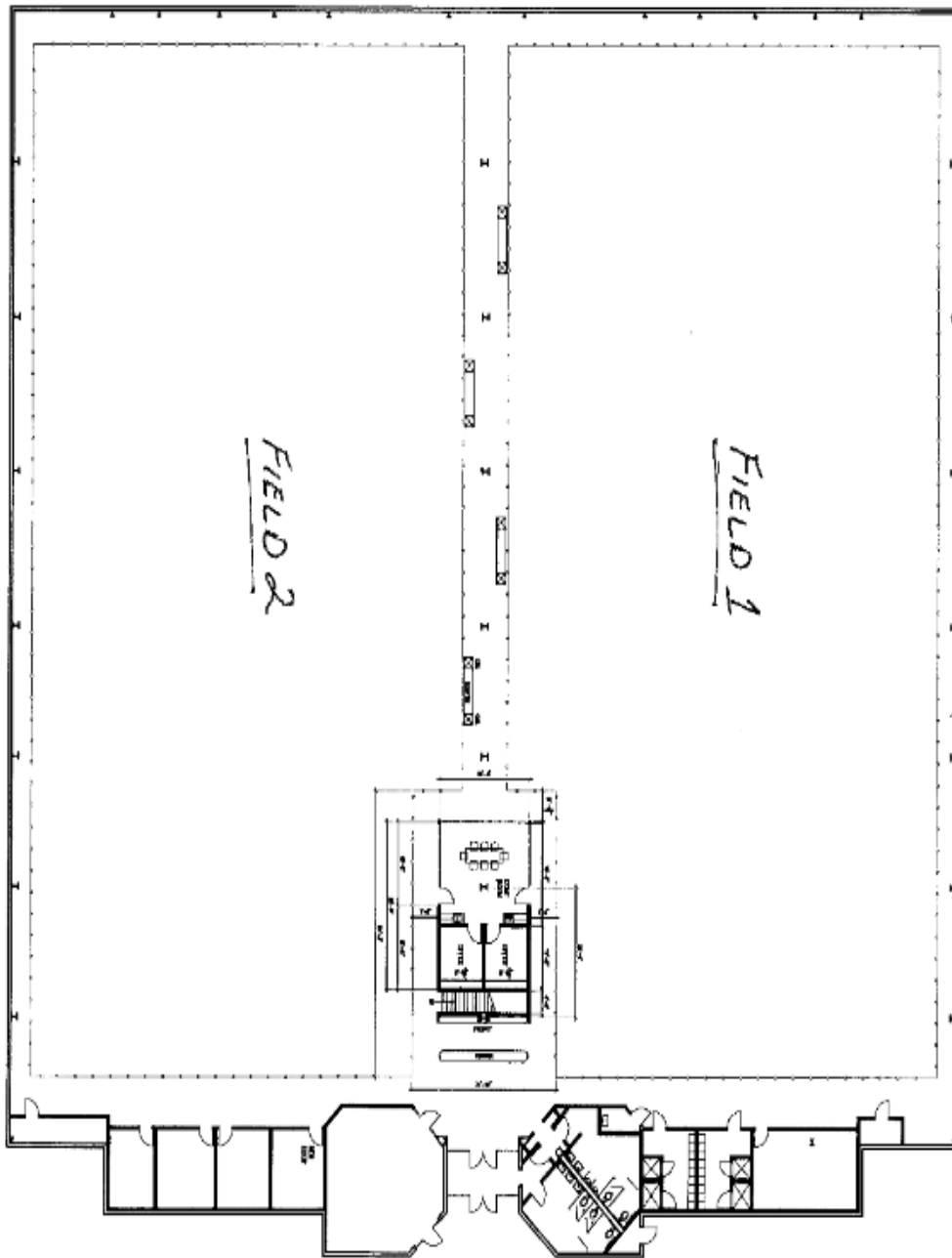
Proposal must be complete using the attached proposal form to be considered and can emailed to cscroggins@shelbyal.com or submitted to: Shelby County Commission
ATTN: Chad Scroggins
200 West College Street, Room 123
Columbiana, AL 35051

Proposals must be received no later than **3:00 p.m. CDT on October 22, 2019**. The proposals will be date and time stamped upon receipt. All inquiries and requests for clarification must be submitted in writing and a written response will be provided in return. If you have any questions, please email Chad Scroggins at cscroggins@shelbyal.com.

Payments

All assets are sold as is/where is and payments are required prior to the removal of the assets. Shelby County reserves the right to decline all proposals for any single asset or multiple assets.

SYNTHETIC TURF DIAGRAMS AND REFERENCE MATERIALS



1996 FIELDS
INDOOR SPORTS FACILITY

ARTIFICIAL TURF

≈ 33,867 SF INSTALLED TOTAL

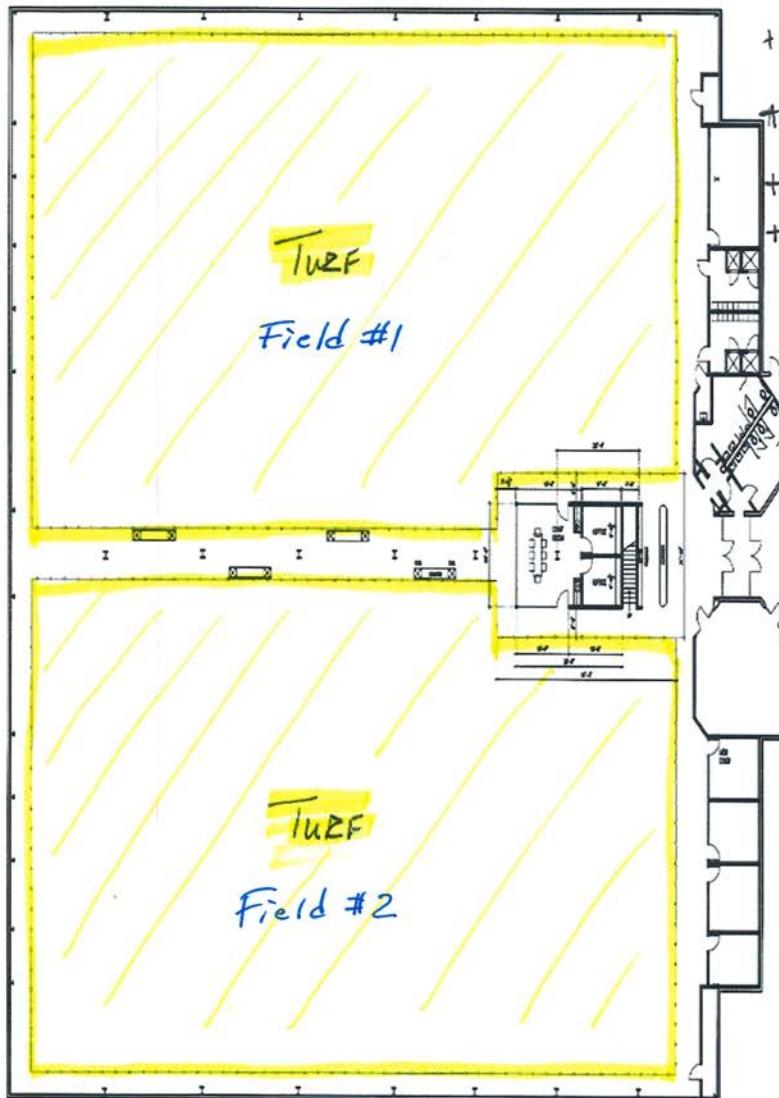
+ 500 lbs GROUND RUBBER

+ 15'x30' ROLL AND MANY
OTHER CAT ROW PCS

+ NEW TURF GROOMER

+ ≈ 840' OF PLASTIC BOARDER TOTAL

+ RUBBER RAMPS





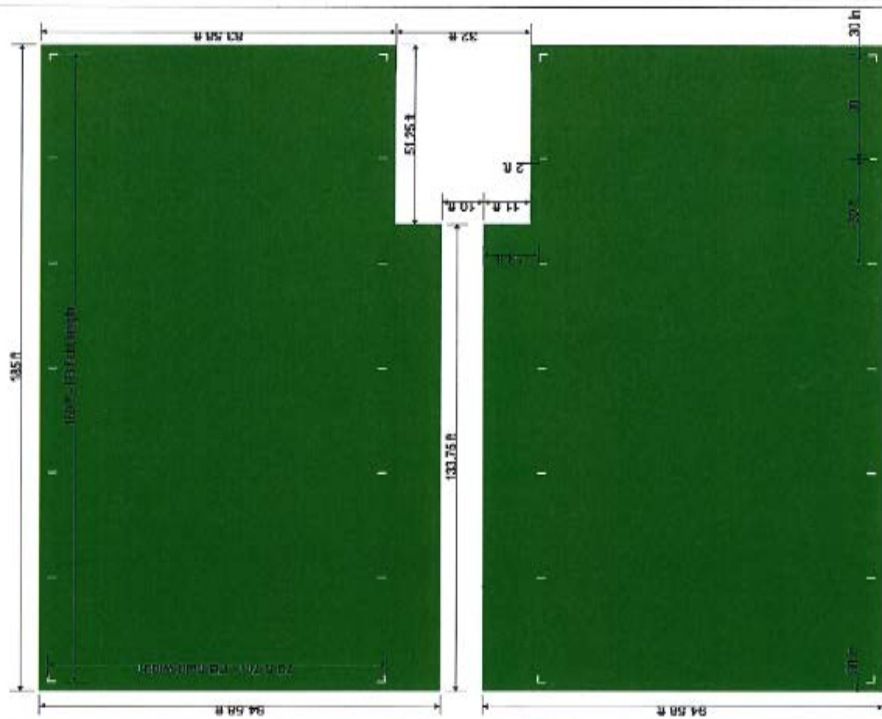
SPORTSBLAST

FIELD LAYOUTS

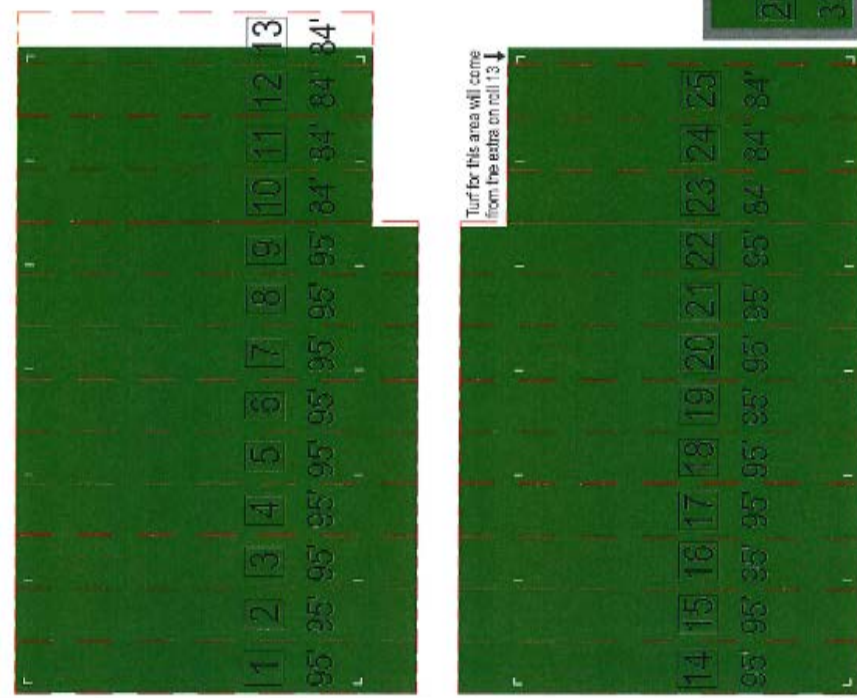
DATE: 2-15-16
DRAWN BY: HJC

SHEET NUMBER
V1

Field Layout



Roll Layout



Notes

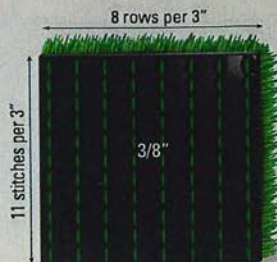
- 1) 27 total rolls.
- 2) Roll 26 is 15' x 33' for attic stock, 100% green
- 3) Roll 27 is 15' x 7' roll for hash marks, 100% white. Hash marks to be cut on site.

By signing this form you agree with the production with no changes. Changes must be resubmitted for a final proof.
I have checked and I approve that all logos, size, spelling, and colors are correct.



TrueGrass XP 42

SKU# - FL407-42 (PL-53)



TUFTING SPECS

STANDARD

ASTM D418/D5848
ASTM D5848
ASTM D5848
ASTM D5848
ASTM D1907

PROPERTY

Pile Weight
Primary Backing Weight
Secondary Coating Weight
Total Weight
Yarn Denier

SPECIFICATION

42 oz/Sq. Yd.
7.4 oz/Sq. Yd.
22 oz/Sq. Yd.
69.4 oz/Sq. Yd.
8,000 denier XP Pro

ASTM D418/D5848
ASTM D5793
ASTM D5848
ASTM

Total Yarn Denier
Pile Height
Tufting Gauge
Primary Backing
Stitch Rate
Infill
Fabric Width
Perforation

8,000
Finished 2"
3/8"
Tri-Layer Woven Polypropylene
11 Stitches Per 3 in.
4-5 lbs +/- per square foot
15'
3/16" Holes 4"x4"



INSTALLATION SPECS

STANDARD

ASTM D1335
ASTM D1682/D5034
ASTM D1682/D5034
ASTM D4991
ASTM D2859
ASTM F355
ASTM F2765
ASTM D5034
ASTM D5034
ASTM D789
ASTM D5793

PROPERTY

Tuft Bind Without Infill
Grab Tear (width)
Grab Tear (length)
Carpet Permeability
Flammability (Pill Burn)
G-Max (Impact Attenuation)
Lead Content
Elongation to Break
Yarn Breaking Strength
Yarn Melting Point
Stitch Rate

SPECIFICATION

8 lbs. +/-
250.1 - 273.1 lbs. Force
197.6 - 236.1 lbs. Force
10 - 15 inches/hour
Pass
<130 at installation
<100 ppm
>50%
>20 lbs.
248 F°
2.3 in.

All Characteristics listed above nominal +/-5%, any changes will result in new SKU# and spec.

This document is for illustrative purposes and may change without notice. Purchaser should verify that a representative specification of the system to be installed has been received prior to the establishment of a project or contract.

info@sporturf.com - 800-798-1056



SYNTHETIC SPORTS TURF GROOMER



The Synthetic Groomer with its second generation brush design conditions synthetic turf surfaces while delivering greater labor efficiencies, ease of operation, and a lower total cost of ownership.

Simple in design with a heavy-duty construction, the focal point of this patented design are the precise brush dimensions and angles. This allows grooming in four directions, standing up turf fibers and leveling infill material.

- Stands Up Synthetic Fibers
- True One-Pass Performance
- Superior Balance for Consistent Grooming
- Used in Wet and Dry Conditions
- Patented Quadruple Direction Design
- Works on All In-filled Surfaces

The Synthetic Sports Turf Groomer has 16 Super Duty Blue brushes set at various angles to the direction the unit is being towed.

It has perfect balance side to side and front to back — allowing for smooth brushing with no hopping. The electric actuator provides almost infinite adjustment control, from wheels down transport to wheels up brushing.

The Groomer stands the turf surface up and assists in moving the top layer of infill, leveling low spots and depressions left after play.

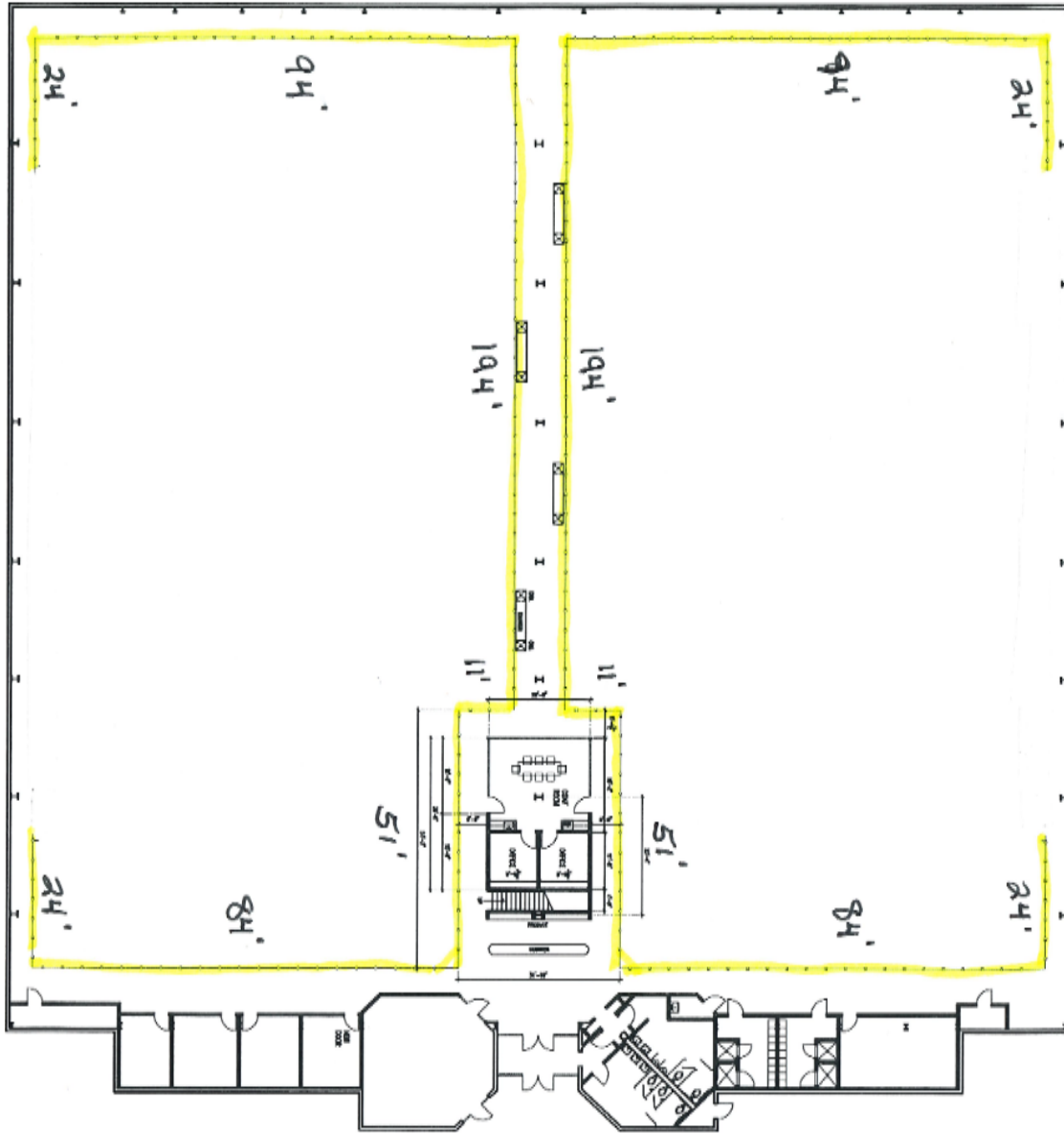
SPECIFICATIONS

Model	920SDE
Main Frame	2 inch square tube (11 gauge) with 1-1/2 inch (10 gauge) Square tube cross bars
Draw Bar	One piece 2" square tube
Length	48 inches (84 inches overall including the draw-bar)
Width	72 inches
Weight	260 lbs.
Running Gear	2 pneumatic tires (16 x 650-8) Ribbed 2-ply with Oil Impregnated Graf oil bushings
Electric Lift	1000 lb. capacity Electric 12 volt linear actuator
Finish	Powder coat with 6-step pre-wash including de-greaser and anti rust coating
Brushes	(16) Blue Super Duty Synthetic Brushes with flat bristles attached to polypropylene head - 4-12"; 8-18"; 4-41"
Brush Weight	26 lbs. - Full set Blue
Shipping Crate	75-1/2" x 53-3/4" x 29"
Crated Weight	370 lbs.

www.GreensGroomer.com

GreensGroomer
WORLDWIDE

INTERIOR FENCING DIAGRAM



840 LF INTERIOR FENCING

8' BLACK CHAINLINK
10 GAUGE
5 EA 4' GATES
3 EA DOUBLE 8' GATES

MISCELLANEOUS PHOTOS



MISCELLANEOUS PHOTOS



MISCELLANEOUS PHOTOS

